



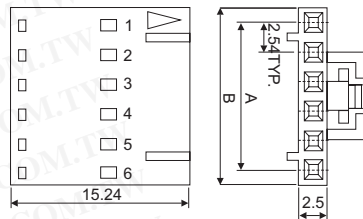
2570 系列 2.54mm 連接座/頭和端子

詳細產品規格請點擊[www.100y.com.tw](http://www.100y.com.tw)



- 額定電流：3AAC,DC(AWG 24)
- 額定電壓：250V AC, DC
- 耐壓：600V AC/Minute
- 接點電阻：15mΩ Max
- 絕緣電阻：1000MΩ Min

| Product No. | A     | B    |
|-------------|-------|------|
| 2570S0203   | 2.54  | 5.1  |
| 2570S0303   | 5.08  | 7.6  |
| 2570S0403   | 7.62  | 10.2 |
| 2570S0603   | 12.70 | 15.2 |
| 2570S0803   | 17.78 | 20.3 |

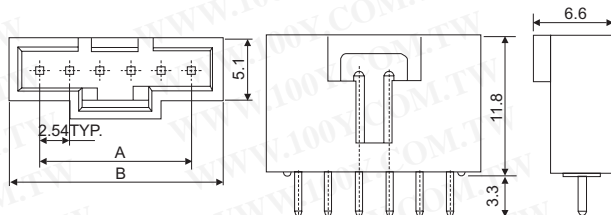


| Part No. | Product No. | 說明                       | 公/母 座/頭 | 角度 ° | Pins | Pitch  |
|----------|-------------|--------------------------|---------|------|------|--------|
| 46177    | 2570S0203   | 2570S Single Row Housing | 母頭      | 180° | 2P   | 2.54mm |
| 46178    | 2570S0303   | 2570S Single Row Housing | 母頭      | 180° | 3P   | 2.54mm |
| 46179    | 2570S0403   | 2570S Single Row Housing | 母頭      | 180° | 4P   | 2.54mm |
| 46180    | 2570S0603   | 2570S Single Row Housing | 母頭      | 180° | 6P   | 2.54mm |
| 46181    | 2570S0803   | 2570S Single Row Housing | 母頭      | 180° | 8P   | 2.54mm |
| 61968    | JP3304-7K   | 2570S Single Row Housing | 母頭      | 180° | 7P   | 2.54mm |



- 額定電流：3AAC, DC(AWG 24)
- 額定電壓：250V AC, DC
- 耐壓：600V AC/Minute
- 接點電阻：15mΩ Max
- 絕緣電阻：1000MΩ Min

| Product No. | A     | B    |
|-------------|-------|------|
| 2571P02031  | 2.54  | 7.6  |
| 2571P03031  | 5.08  | 10.1 |
| 2571P04031  | 7.62  | 12.7 |
| 2571P06031  | 12.70 | 17.8 |
| 2571P08031  | 17.78 | 22.8 |



| Part No. | Product No. | 說明                      | 公/母 座/頭 | 角度 ° | Pins | Pitch  |
|----------|-------------|-------------------------|---------|------|------|--------|
| 46182    | 2571P02031  | 2571P Single Row Header | 公座      | 180° | 2P   | 2.54mm |
| 46732    | 2571P03031  | 2571P Single Row Header | 公座      | 180° | 3P   | 2.54mm |
| 46733    | 2571P04031  | 2571P Single Row Header | 公座      | 180° | 4P   | 2.54mm |
| 46734    | 2571P06031  | 2571P Single Row Header | 公座      | 180° | 6P   | 2.54mm |
| 46735    | 2571P08031  | 2571P Single Row Header | 公座      | 180° | 8P   | 2.54mm |



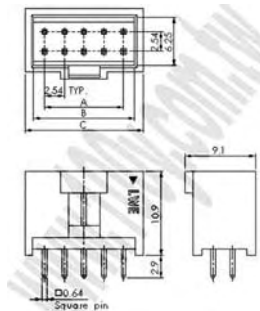
| Part No. | Product No. | 說明                           | 公/母 座/頭 | 角度 ° | Pins | Pitch  |
|----------|-------------|------------------------------|---------|------|------|--------|
| 51632    | 2572P02031  | 2572P Single Row Header (鍍金) | 公座      | 90°  | 2P   | 2.54mm |
| 51631    | 2572P0203T  | 2572P Single Row Header (鍍銀) | 公座      | 90°  | 2P   | 2.54mm |
| 57573    | 2572P0403T  | 2572P Single Row Header (鍍銀) | 公座      | 90°  | 4P   | 2.54mm |



| Part No. | Product No. | 說明               | Parking     |
|----------|-------------|------------------|-------------|
| 46847    | 2573T011R   | 2573T 磷銅(鍍純錫) 端子 | 15,000pcs/R |

2580系列2.54mm連接座/頭和端子

詳細產品規格請點擊[www.100y.com.tw](http://www.100y.com.tw)



| Product No. | A     | B     | C     |
|-------------|-------|-------|-------|
| 2581P1003T  | 10.16 | 13.04 | 15.24 |
| 2581P1403T  | 15.24 | 18.12 | 20.32 |

- Material
- Base: PBT 94V-0(Black Color)
  - Pin: Brass
  - Select Gold Flash: Gold-Flash on contact area  
Tin-Plated on solder area

| Part No. | Product No. | 說明                               | 公/母 座/頭 | 角度 ° | Pins | Pitch  |
|----------|-------------|----------------------------------|---------|------|------|--------|
| 55770    | 2581P1003T  | 2580 Series Dual Row Header (鍍錫) | 公座      | 180° | 10P  | 2.54mm |
| 55772    | 2581P1403T  | 2580 Series Dual Row Header (鍍錫) | 公座      | 180° | 14P  | 2.54mm |



您可以通過以下訂貨方式與我們聯繫，訂購產品

☎ 電話訂購

📠 傳真訂購

✉ 電郵訂購

