

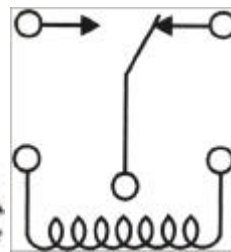
RELAYS & SOLENIIDS

PartNo.	ProductNo.	Description	ContactArrangement	ContactRating	CoilVoltage	RecognizedSafety	OutlineLxWxH
13442	LE-48TW	繼電器LE-48TW LE	1PST/1PDT	DC24V/10A	48Vdc	TUV,UL,CUL	21.5*16*17
2906	LE-5TW	繼電器COIL5VdcLE	1PDT	120Vac24Vdc/10A	5Vdc	UL,TUV	21.5*16*16.5
4467	LE-6TW	繼電器COIL: 6VdcLE	1PDT	120Vac24Vdc/10A	6Vdc	UL,TUV	21.5*16*16.5
4468	LE-9TW	繼電器COIL: 9VdcLE	1PDT	120Vac24Vdc/10A	9Vdc	UL,TUV	21.5*16*16.5



Specifications/SpecialFeatures:
 Size(LxWxH):19.5x15.8x15mm
 Contactarrangement:1PDT
 Contactrating(resistiveload):120VAC/10A, 24VDC/10A240VAC/10A
 Coilvoltage:3VDC、5VDC、12VDC、24VDC
 Coilpower(nominal):0.36W(DC)
 Breakdownvoltage:Betweencontacts:750VAC
 Betweenallelements:1500VAC
 Insulationresistance:500VDC,100Mohms
 Life(min.operation):Mechanical:10⁷
 Electrical(atratedload):10⁵
 Approximateweight:9g

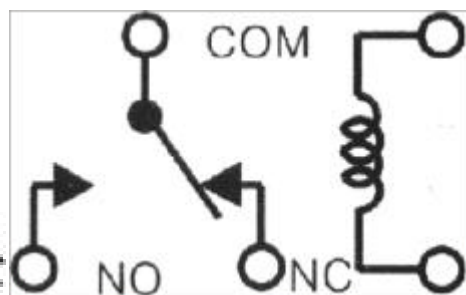
Safety/QualityApprovals:
 TUV
 UL
 CUL



PartNo.	ProductNo.	Manuf.	Description	ContactArrangement	ContactRating	CoilVoltage	RecognizedSafety	OutlineLxWxH
8193	LEG-12T	RAYEX	PCB繼電器LEG	1PDT	120VAC/24VDC/10A	12Vdc	UL,TUV	19.5*15.8*15
2294	LEG-24T	RAYEX	PCB繼電器LEG	1PDT	120VAC/24VDC/10A	24Vdc	UL,TUV	19.5*15.8*15
10355	LEG-3T	RAYEX	PCB繼電器LEG	1PDT	120VAC/24VDC/10A	3Vdc	UL,TUV	19.5*15.8*15
3604	LEG-5T	RAYEX	PCB繼電器LEG	1PDT	120VAC/24VDC/10A	5Vdc	UL,TUV	19.5*15.8*15



Specifications/SpecialFeatures:
 Size(LxWxH):29x12.5x25.5mm
 Contactarrangement:1PST,1PDT
 Contactrating(resistiveload):250VAC/10A, 30VDC/10A
 Coilvoltage:5VDC,12VDC,24VDC
 Coilpower(nominal):0.53W(DC)
 Breakdownvoltage:Betweencontacts:1000VAC
 Betweenallelements:5000VAC
 Insulationresistance:500VDC,100Mohms
 Life(min.operation):Mechanical:10⁷
 Electrical(atratedload):10⁵
 Approximateweight:16g
SafetyStandardApproval
 UL,CUL

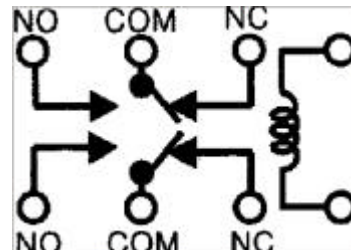


PartNo.	ProductNo.	Manuf.	Description	ContactArrangement	ContactRating	CoilVoltage	RecognizedSafety	OutlineLxWxH
2276	LM1-12D	RAYEX	PCB功率繼電器LM1	1PDT	10A 240Vac/10A 30Vdc	12Vdc	UL,CUL	29*12.5*25.5
2277	LM1-24D	RAYEX	PCB功率繼電器LM1	1PDT	10A 240Vac/10A 30Vdc	24Vdc	UL,CUL	29*12.5*25.5
2902	LM1-5D	RAYEX	PCB功率繼電器LM1	1PDT	10A 240Vac/10A 30Vdc	5Vdc	UL,CUL	29*12.5*25.5



Specifications/SpecialFeatures:
 Size(LxWxH):29.4x12.5x25.5mm
 Contactarrangement:2PST,2PDT
 Contactrating(resistiveload):250VAC/5A, 30VDC/5A
 Coilvoltage:5VDC,12VDC,24VDC,48VDC
 Coilpower(nominal):0.53W(DC)
 Breakdownvoltage:Betweencontacts:1000VAC
 Betweenallelements:5000VAC
 Insulationresistance:500VDC,1000Mohms
 Life(min.operation):Mechanical:10⁷
 Electrical(atratedload):10⁵
 Approximateweight:17g

Safety/QualityApprovals:
 TUV
 UL
 CUL

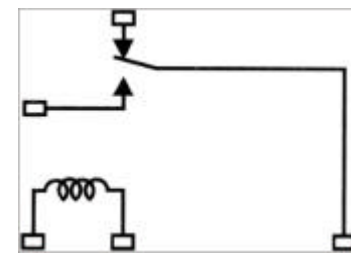


PartNo.	ProductNo.	Manuf.	Description	ContactArrangement	ContactRating	CoilVoltage	RecognizedSafety	OutlineLxWxH
2903	LM2-05D	RAYEX	PCB功率繼電器LM2	2PDT	5A 250Vac/ 10A 30Vdc	5Vdc	UL,CUL	29*12.5*25.5
2272	LM2-12D	RAYEX	PCB功率繼電器LM2	2PDT	5A 240Vac/ 5A30Vdc	12Vdc	UL,CUL	29*12.5*25.5
2273	LM2-24D	RAYEX	PCB功率繼電器LM2	2PDT	5A 240Vac/ 5A30Vdc	24Vdc	UL,CUL	29*12.5*25.5
3376	LM2-48D	RAYEX	PCB功率繼電器LM2	2PDT	5A 240Vac/ 5A30Vdc	48Vdc	UL,CUL	29*12.5*25.5



Specifications/SpecialFeatures:
 Size(LxWxH):21.8x16.8x14.2mm
 Contactarrangement:1PDT
 Contactrating(resistiveload):120VAC/10A, 24VDC/10A240VAC/6A
 Coilvoltage:12VDC、24VDC、48VDC
 Coilpower(nominal):0.36W(DC)、0.45W(DC)
 Breakdownvoltage:Betweencontacts:750VAC
 Betweenallelements:1,500VAC
 Insulationresistance:500VDC,100Mohms
 Life(min.operation):Mechanical:10⁷
 Electrical(atratedload):10⁵
 Approximateweight:10g

Safety/QualityApprovals:
 TUV
 UL
 CUL



PartNo.	ProductNo.	Manuf.	Description	ContactArrangement	ContactRating	CoilVoltage	RecognizedSafety	OutlineLxWxH
2268	LT-12G	RAYEX	PCB繼電器LT	1PDT	10A 120Vac/ 10A 24Vdc	12Vdc	TUV	21.8*16.8*14.2
11646	LT-24G	RAYEX	PCB繼電器LT	1PDT	10A 120Vac/5A240Vdc	24Vdc	TUV	21.8*16.8*14.2

