

SOCKETS & ACCESSORIES


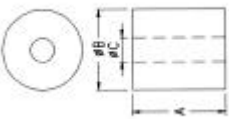
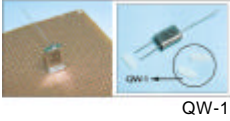
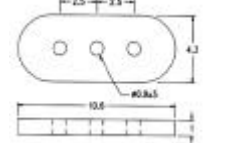

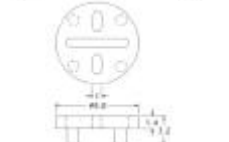

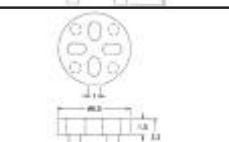

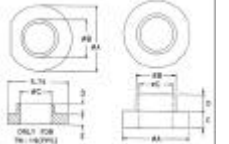
晶體座

APEX絕緣片+螺絲+附件
APEXHardwareKit

PartNo.	ProductNo.	Manuf.	Description	Type
19959	CLAMP02	APEX	Clamp	
19960	CLAMP04	APEX	Clamp	
19961	HK03	APEX	HARDWARE KIT FOR D X(SIP12) PACKAGE	
19962	HK26	APEX	HARDWARE KIT FOR D X(SIP12) PACKAGE	

晶體墊片

ThermalWashers

PartNo.	ProductNo.	Manuf.	Description	材質
20004	MS02	APEX	晶體墊片	
20007	MS04	APEX	晶體墊片	
20009	MS07	APEX	晶體墊片	
20010	MS08	APEX	晶體墊片	BodyBrass Contact30µin.Goldover Nickel
10152	PW-1A		零件墊片	P.B.T.(UL)
10148	PW-2		零件墊片	P.B.T. (UL)
6951	QW-1		石英晶體墊片	NYLON 66(UL)
10057	TO-05		電晶體墊片	P.B.T(UL)
10056	TO-18		TO-18電晶體墊片	
10150	TW-1		TO-220 電晶體墊片	P.B.T
10149	TW-2		電晶體墊片	P.B.T
19926	TW03	APEX	Thermal Washer	Aluminum
19927	TW05	APEX	Thermal Washer	Aluminum
19928	TW06	APEX	Thermal Washer	Aluminum
19929	TW07	APEX	Thermal Washer	Aluminum
19930	TW09	APEX	Thermal Washer	Aluminum
19931	TW10	APEX	Thermal Washer	Aluminum
19932	TW12	APEX	Thermal Washer	Kapton Type MT
19933	TW13	APEX	Thermal Washer	Kapton Type MT
19934	TW14	APEX	Thermal Washer	Kapton Type MT

詳細產品規格--請點擊www.100y.com.tw

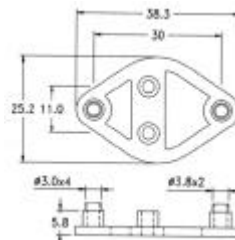
詳細產品規格--請點擊www.100y.com.tw

晶體座

TransistorHousing



電晶體座 TRANSISTORHOUSING
MATERIAL:NYLON66(UL)
FLAMECLASS:94V-2
COLOR:NATURAL
用途：鎖於TO-3功率晶體與散熱片之間，作為絕緣與保護之用。



PartNo.	ProductNo.	Manuf.	Description	材質
22556	204-6585-50-0602	3M	Pin Circle 2.54mm Series	resin& copper
20005	MS03	APEX	MATING SOCKET	
20006	MS05	APEX	MATING SOCKET	
2243	TR-4		電晶體座	NYLON 66 (UL)

DIP腳座

短圓腳IC腳座(PIN的內部鍍金)

Machine TooledLowProfileGoldPlated IC Sockets



C06系列



C07系列



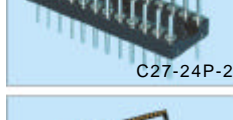
C10系列



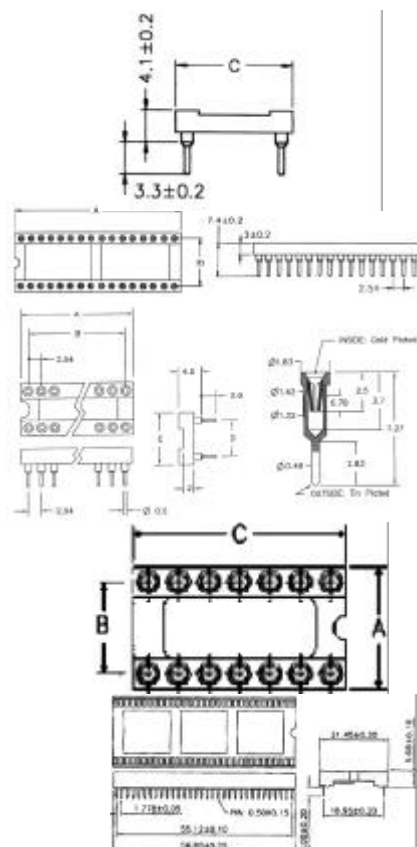
C11系列



C27-24P-2



IS-64-GC



PartNo.	ProductNo.	Description	PIN的內部鍍金Y/N	Pins	容/寬mil
1915	C06-06P	6P 短圓腳 IC 座	Yes	6P	0.3
3304	C06-08P	8P 短圓腳 IC 座	Yes	8P	0.3
3305	C06-14P	14P 短圓腳 IC 座	Yes	14P	0.3
3306	C06-16P	16P 短圓腳 IC 座	Yes	16P	0.3
2845	C06-18P	18P 短圓腳 IC 座	Yes	18P	0.3
2844	C06-20P	20P 短圓腳 IC 座	Yes	20P	0.3
16112	C06-22P-1	22P 短圓腳 IC 座	Yes	22P	0.3

