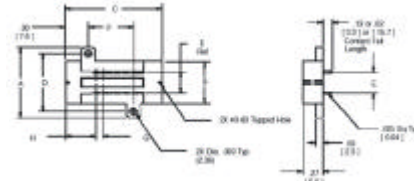


SOCKETS & ACCESSORIES

PartNo.	ProductNo.	Manuf.	Description	窄/寬mil	耐溫	Pins/Pitch	上座下座
10261	242-1293-00-0602J	3M	42P鍍金測試上座	600mil	-50~150	42P/1.78mm	上座
15992	248-1321-00-0602J	3M	48P鍍金測試上座	300-600mil	-50~150	48P/2.54mm	上座
15146	256-1292-00		56P鍍金測試上座	600mil	-50~105	56P/1.778mm	上座
10303	264-1300-00-0602J	3M	64P鍍金測試上座	800mil	-50~150	64P/1.78mm	上座

DIP 測試座的下座 Receptacles For DIP Sockets

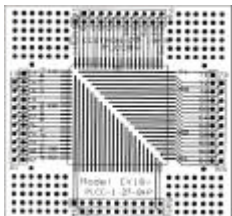
詳細產品規格--請點擊www.100y.com.tw



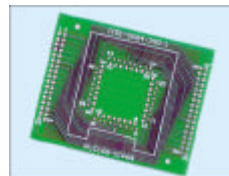
PartNo.	ProductNo.	Manuf.	Description	窄/寬mil	耐溫	Pins/Pitch	上座下座
26220	214-3339-19-0206	3M	14P鍍金測試下座	300mil	-50~105	14P/2.54mm	下座
11607	216-3340-19-0602J	3M	16P鍍金測試下座	300mil	-50~150	16P/2.54mm	下座
11181	218-3341-00-0602J	3M	18P鍍金測試下座	300mil	-50~150	18P/2.54mm	下座
11177	220-3342-00-0602J	3M	20P鍍金測試下座	300mil	-50~150	20P/2.54mm	下座
12197	222-3343-19-0602J	3M	22P鍍金測試下座	400mil	-50~150	22P/2.54mm	下座
11180	224-1275-19-0602J	3M	24P鍍金測試下座	600mil	-50~150	24P/2.54mm	下座
27012	224-5240-19-0602J	3M	24P鍍金測試下座	300mil	-50~150	24P/2.54mm	下座
11147	228-1277-19-0602J	3M	28P鍍金測試下座	600mil	-50~150	28P/2.54mm	下座
3833	232-1285-39-0602J	3M	32P鍍金測試下座	600mil	-50~150	32P/2.54mm	下座
7111	240-1280-19-0602J	3M	40P鍍金測試下座	600mil	-50~150	40P/2.54mm	下座
14425	242-1281-19-0602J	3M	42P鍍金測試下座	600mil	-50~150	42P/2.54mm	下座
14512	242-1293-09-0602J	3M	42P鍍金測試下座	600mil	-50~150	42P/1.78mm	下座
10337	248-1282-19-0602J	3M	48P鍍金測試下座	600mil	-50~150	48P/2.54mm	下座
12139	264-1300-09-0602J	3M	64P鍍金測試下座	800mil	-50~150	64P/1.78mm	下座

萬用轉接板模組 PLCCtoDIP 轉接板 PLCCtoDIP PCB Adaptors

詳細產品規格--請點擊www.100y.com.tw



For SMD-ICs soldering and convert to DIP type.
Suit for SMD-IC with different number pins. (Patented: 73407)
This figure is actual size (1:1) for your SMD-IC collate.
Prototype board.
Every model attached pitch 2.54mm pin-header and female header convert to



For: IC51-0684-390腳座
W76xL61mm

PartNo.	ProductNo.	Description	Pins
11151	CV18-PLCC-1.27-84P	PLCC(1.27mm Pitch) 轉接板	84 Pins

PartNo.	ProductNo.	Description	Pins
12587	PLCC68PIN390PCB	轉接板	68 Pins

QFPtoDIP 轉接板 QFPtoPCB Adaptors

詳細產品規格--請點擊www.100y.com.tw

