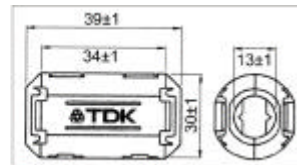


INDUCTORS & SUPPRESSORS & FILTERS



Dataline Noise Filters ishinged-clamp and have a nice shape. It also have high performance for EMI. 本產品外型美觀，可以隨時裝卸在資料線上，並且對消除EMI干擾有不錯的效果。



PartNo.	ProductNo.	Manuf.	Description	Type	Cable/Hole Dia. mm	Imp. (25MHz)	Imp. (100MHz)
3519	JMLF-100		可夾式鐵粉芯扣環	JMLF-100	100	130	290
3520	JMLF-130		可夾式鐵粉芯扣環	JMLF-130	130	140	300
3521	JMLF-35		可夾式鐵粉芯扣環	JMLF-35B	35	80	200
9994	JMLF-50		可夾式鐵粉芯扣環	JMLF-50	50mm	85	150
8111	JMLF-65		可夾式鐵粉芯扣環	JMLF-65	65mm	125	275
8112	JMLF-75		可夾式鐵粉芯扣環	JMLF-75	75mm	130	240
9995	JMLF-90		可夾式鐵粉芯扣環	JMLF-90	90mm	150	270
13975	ZCAT3035	TDK	可夾式鐵粉芯扣環	ZCAT	13±1	80	80

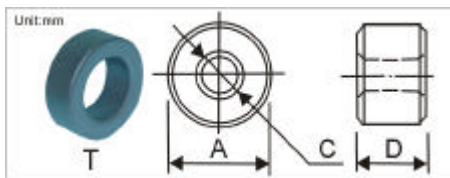
T-Type 圓環型鐵粉芯 T-Type Ferrite Cores

詳細產品規格--請點擊 www.100y.com.tw



Application:

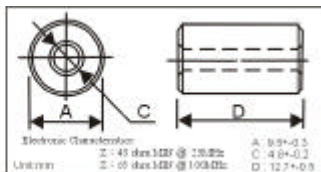
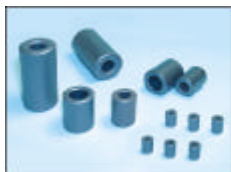
The T-core are mainly used for coupling transformers, balancing coils, fixed coils and filter coils. The ring configurations provide the ultimate in utilization of the properties of ferrite. Pulse transformer filter inductor loading coil and balun transformers are a few of application for this type core.



PartNo.	ProductNo.	Manuf.	Description	外環直徑(mm)	內環直徑(mm)	厚度(mm)
9998	T12*5.5*3		綠色圓環型鐵粉芯	12	5.5	3
10003	T17.5*9.5*7	CFE	圓環型鐵粉芯	17.5	9.5	7
10001	T22.5*13.8*6.4	CFE	圓環型鐵粉芯	22.5	13.8	6.4
10000	T22.5*13.8*8	CFE	綠色圓環型鐵粉芯	22.5	13.8	8
10002	T31*19*8	CFE	黃色圓環型鐵粉芯	31	19	7.5
9996	T6*4*2	CFE	綠色圓環型鐵粉芯	6.0	4.0	2.0
9997	T9.5*4.8*3	CFE	圓環型鐵粉芯	9.5	4.8	3

RH-Type 圓柱中空型鐵粉芯 RH-Type Ferrite Cores

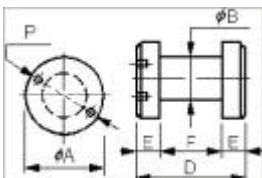
詳細產品規格--請點擊 www.100y.com.tw



PartNo.	ProductNo.	Manuf.	Description	直徑(mm)	內環直徑(mm)	長度(mm)
10011	EM11-RH9.5*4.8*12.7	CFE	圓柱中空型鐵粉芯	9.5	4.8	12.7
10013	L3E-RH14.2*6.35*28.5	CFE	圓柱中空型鐵粉芯	14.2	6.35	28.5
10012	L52-RH12*7.3*15	CFE	圓柱中空型鐵粉芯	12	7.3	15
10010	L52-RH4.6*1.85*6	CFE	圓柱中空型鐵粉芯	4.6	1.85	6

DR2W, DR2WS-Type 工字型鐵粉芯 DR2W, DR2WS-Type Ferrite Cores

詳細產品規格--請點擊 www.100y.com.tw



Application:

R-core is mainly used as the magnetic cores of the coils which do not require adjustments as well as magnetic shield. RWW type are used for peaking coils and microinductors.

PartNo.	ProductNo.	Description	A*D (mm)	B (mm)	F (mm)	P (mm)	Materials
23432	DR2W12*15	立式工字型鐵粉芯	12*15	6	10	7.5	L11
23433	DR2W14*15	立式工字型鐵粉芯	14*15	6.5	9	8.5	L11
23434	DR2W16*18	立式工字型鐵粉芯	16*18	10	13	10	L11

