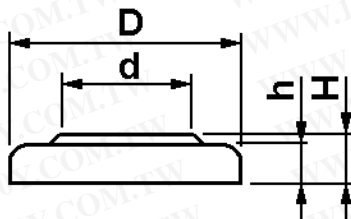


Specification of ML1220

Coin Type Rechargeable Lithium Battery (ML-Series)

Nominal Voltage		3 V	
Nominal Capacity		15 mAh	Nominal capacity is determined to an end voltage of 2.0V when the battery is allowed to discharge at a standard current level at 23°C
Standard Charge/ Discharge Current		0.1 mA	
Max. Discharge Current	Continuous	2 mA	Current value is determined so that 50% of the nominal capacity is obtained with an end voltage of 2.0V at 23°C
	Pulse	5 mA	Current value for obtaining 2.0V cell voltage when 15 sec. pulse applied at 50% discharge depth (23°C)
End Voltage		2.0 V	
Self-Discharge		2%/year	Storage condition: 23°C
Charge/Discharge Cycle Characteristics		3000 cycles with 0.6 mAh (discharge depth of 5%) 500 cycles with 2.4 mAh (discharge depth of 20%)	
Charging Method		3.1±0.15V	Constant voltage charge
Energy Density	Volume	122 Wh/l	Calculate with nominal capacity and standard discharge current
	Weight	43 Wh/kg	Calculate with nominal capacity and standard discharge current
Weight		0.7 g	
Dimensions	Height	2.0 mm	
	Diameter	12.5 mm	

Dimensions



Size without shrinktube:

$$D = 12,5_{-0,2}$$

$$d = 10,0$$

$$h = 1,4_{\pm 0,05}$$

$$H = 2,0_{-0,2}$$

(unit: mm)

勝特力材料 886-3-5753170
 勝特力电子(上海) 86-21-34970699
 勝特力电子(深圳) 86-755-83298787
[Http://www.100y.com.tw](http://www.100y.com.tw)

Can material:

Negative cap:

stainless steel

Positive can:

stainless steel

Battery material:

Cathode:

Manganese dioxide

Anode:

Li-Al alloy

Electrolyte:

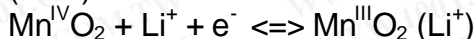
Organic electrolyte

Chemical reaction:

Anode reaction:



Cathode reaction:



Overall battery reaction:

