

Aluminum Capacitors + 105 °C, Miniature, Radial Lead

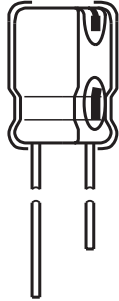


Fig.1 Component outline

FEATURES

- Improved SMPS output capacitors
- Highest ripple current ratings per case size
- High CV



QUICK REFERENCE DATA	
DESCRIPTION	VALUE
Nominal case size Ø D x L in mm	0.394" x 0.472" [10.0 x 12.0] to 0.709" x 1.575" [18.0 x 40.0]
Operating temperature	- 55 °C to + 105 °C
Rated Capacitance range, C _R	33 µF to 6800 µF
Tolerance on C _R	± 20 %
Rated voltage range, U _R	6.3 WVDC to 63 WVDC
Termination	2 and 3 radial leads and axial mount.
Life validation test at 105 °C	4000 hours (≥ 0.512" [13.0] diameter): 3000 hours (0.394" [10.0] diameter): Δ CAP ≤ 20 % (6.3 WVDC to 25 WVDC), ≤ 15 % (40 WVDC to 63 WVDC) from initial measurement. Δ ESR ≤ 1.3 x initial specified limit. Δ DCL ≤ 2 x initial specified limit.
Shelf life at 105 °C	1000 hours: Δ CAP ≤ 20 % (6.3 WVDC to 25 WVDC), ≤ 15 % (40 WVDC to 63 WVDC) from initial measurements. Δ ESR ≤ 1.3 x initial specified limit.
DC leakage current	I = 0.01 CV, 2 minute charge time. I = 0.03 CV, 1 minute charge time. I in µA, C in µF, V in Volts

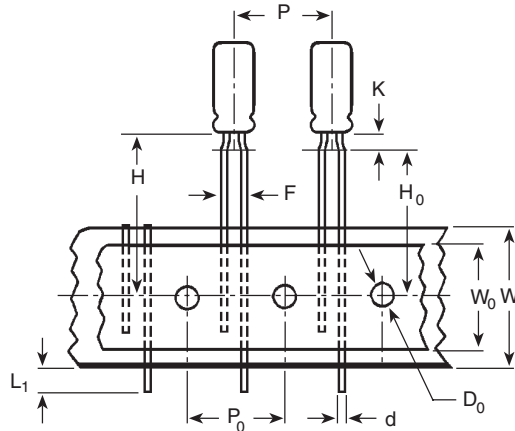
RIPPLE CURRENT MULTIPLIERS					
TEMPERATURE					
AMBIENT TEMPERATURE		MULTIPLIERS			
+ 105 °C		1.0			
+ 85 °C		2.2			
+ 75 °C		2.7			
≤ + 65 °C		3.0			
FREQUENCY (Hz)					
WVDC	50 - 60	100 - 120	300 - 400	1 k - 19 k	20 k to 200 k
6.3 - 63	0.60	0.70	0.75	0.82	1.0

LOW TEMPERATURE PERFORMANCE				
CAPACITANCE RATIO C - 55 °C / C + 25 °C MINIMUM AT 120 Hz				
Maximum Capacitance Change	Voltage	Multiplier		
	6.3 V - 16 V	0.75		
25 V - 63 V	0.85			
Maximum Impedance Change	Voltage	Multiplier		
	6.3 V - 16 V	2.0		
25 V - 63 V	1.5			
ESL (TYPICAL VALUES AT 1 MHz TO 10 MHz)				
Nominal Diameter	0.394 [10.0]	0.512 [13.0]	0.630 [18.0]	0.709 [18.0]
Typical ESL (nH)	4.0	7.0	10.0	12.0

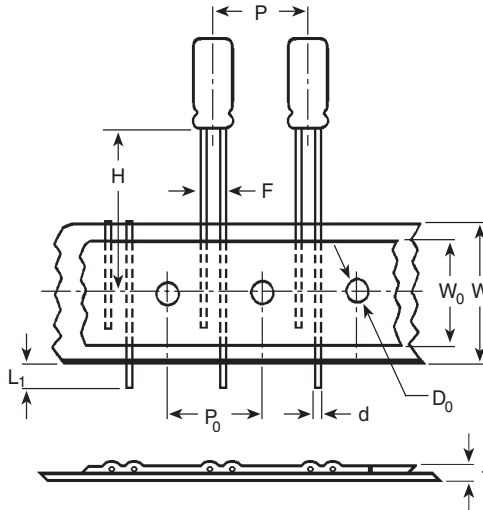
DIMENSIONS in inches [millimeters]										
CASE CODE	NOMINAL		STYLES 2 AND 4		STYLES 3 AND 5		LEAD SPACING		LEAD DIAMETER	
	D	L	D (max.)	L (max.)	D (max.)	L (max.)	S ± 0.024 [0.60]		Nominal	AWG No.
CC	0.394 [10.0]	0.512 [13.0]	0.413 [10.5]	0.563 [14.3]	0.413 [10.5]	0.630 [16.0]	0.197 [5.0]		0.025 [0.63]	22
CD	0.394 [10.0]	0.630 [16.0]	0.413 [10.5]	0.669 [17.0]	0.413 [10.5]	0.740 [18.8]	0.197 [5.0]		0.025 [0.63]	22
CG	0.394 [10.0]	0.787 [20.0]	0.413 [10.5]	0.846 [21.5]	0.413 [10.5]	0.906 [23.0]	0.197 [5.0]		0.025 [0.63]	22
DG	0.49 [12.5]	0.787 [20.0]	0.512 [13.0]	0.846 [21.5]	0.512 [13.0]	0.906 [23.0]	0.197 [5.0]		0.032 [0.81]	20
DK	0.492 [12.5]	0.984 [25.0]	0.512 [13.0]	1.043 [26.5]	0.512 [13.0]	1.142 [29.0]	0.197 [5.0]		0.032 [0.81]	20
CASE CODE	NOMINAL		STYLES 2 AND 4		STYLES 3 AND 5		LEAD SPACING		LEAD DIAMETER	
	D	L	D (max.)	L (max.)	D (max.)	L (max.)	S ± 0.002 [0.50]	T ± 0.002 [0.50]	Nominal	AWG No.
DM	0.492 [12.5]	1.043 [26.5]	0.512 [13.0]	1.102 [28.0]	0.512 [13.0]	1.161 [29.5]	0.197 [5.0]	0.098 [2.5]	0.032 [0.81]	20
DT	0.492 [12.5]	1.319 [33.5]	0.512 [13.0]	1.346 [34.2]	0.512 [13.0]	1.417 [36.0]	0.197 [5.0]	0.098 [2.5]	0.032 [0.81]	20
DS	0.492 [12.5]	1.673 [42.5]	0.512 [13.0]	1.720 [43.7]	0.512 [13.0]	1.791 [45.5]	0.197 [5.0]	0.098 [2.5]	0.032 [0.81]	20
EK	0.630 [16.0]	0.984 [25.0]	0.650 [16.5]	1.031 [26.2]	0.650 [16.5]	1.098 [27.9]	0.295 [7.5]	0.150 [3.8]	0.032 [0.81]	20

DIMENSIONS in inches [millimeters]										
CASE CODE	NOMINAL		STYLES 2 AND 4		STYLES 3 AND 5		LEAD SPACING		LEAD DIAMETER	
	D	L	D (max.)	L (max.)	D (max.)	L (max.)	S ± 0.002 [0.50]	T ± 0.002 [0.50]	Nominal	AWG No.
EN	0.630 [16.0]	1.260 [32.0]	0.650 [16.5]	1.319 [33.5]	0.650 [16.5]	1.417 [36.0]	0.295 [7.5]	0.150 [3.8]	0.032 [0.81]	20
ER	0.630 [16.0]	1.417 [36.0]	0.650 [16.5]	1.476 [37.5]	0.650 [16.5]	1.575 [40.0]	0.295 [7.5]	0.150 [3.8]	0.032 [0.81]	20
EU	0.630 [16.0]	1.575 [40.0]	0.650 [16.5]	1.642 [41.7]	0.65 [16.5]	1.669 [42.4]	0.295 [7.5]	0.150 [3.8]	0.032 [0.81]	20
FR	0.709 [18.0]	1.417 [36.0]	0.728 [18.5]	1.476 [37.5]	0.728 [18.5]	1.575 [40.0]	0.295 [7.5]	0.150 [3.8]	0.032 [0.81]	20
FV	0.709 [18.0]	1.57 [40.0]	0.728 [18.5]	1.654 [42.0]	0.728 [18.5]	1.693 [43.0]	0.295 [7.5]	0.150 [3.8]	0.032 [0.81]	20

TAPE AND REEL, SPECIFICATIONS TO EIA-468D in inches [millimeters]

Formed Leads


DIMENSIONS in inches [millimeters] AND PACKAGING QUANTITIES		
CASE SIZE	F LEAD SPACING	STD. QTY/REEL
0.236 x 0.453 [6.0 x 11.0]	0.197 [5.0]	800
0.315 x 0.472 [8.0 x 12.0]	0.197 [5.0]	700

Unformed (Straight) Leads


DIMENSIONS in inches [millimeters] AND PACKAGING QUANTITIES		
CASE SIZE	F LEAD SPACING	STD. QTY/REEL
0.236 x 0.453 [6.0 x 11.0]	0.098 [2.5]	800
0.315 x 0.472 [8.0 x 12.0]	0.140 ⁽¹⁾ [3.5]	700
0.394 x 0.512 [10.0 x 13.0]	0.197 [5.0]	500
0.394 x 0.630 [10.0 x 16.0]	0.197 [5.0]	500
0.394 x 0.787 [10.0 x 20.0]	0.197 [5.0]	500

 Note ⁽¹⁾ Available as special order.



DIMENSIONS in inches [millimeters]					
ITEM	CASE SIZE (Diameter x Length)				
	0.236 x 0.433 [6.0 x 11.0]	0.315 x 0.472 [8.0 x 12.0]	0.394 x 0.512 [10.0 x 13.0]	0.394 x 0.630 [10.0 x 16.0]	0.394 x 0.787 [10.0 x 20.0]
d - Lead-wire diameter	0.025 [0.63]	0.025 [0.63]	0.025 [0.63]	0.025 [0.63]	0.025 [0.63]
P - Pitch of component	0.500 [12.7]	0.500 [12.7]	0.500 [12.7]	0.500 [12.7]	0.500 [12.7]
P ₀ - Feed hole pitch	0.500 [12.7]	0.500 [12.7]	0.500 [12.7]	0.500 [12.7]	0.500 [12.7]
F - Lead-to-lead distance	0.197 [5.0]	0.197 [5.0]	0.197 [5.0]	0.197 [5.0]	0.197 [5.0]
K - Clinch height	0.098 [2.5]	0.157 [4.0]	N/A	N/A	N/A
H - Height of component from tape center	0.728 [18.5]	0.787 [20.0]	0.906 [23.0]	0.906 [23.0]	0.906 [23.0]
H ₀ - Lead-wire clinch height	0.630 [16.0]	0.630 [16.0]	N/A	N/A	N/A
W - Tape width	0.709 [18.0]	0.709 [18.0]	0.709 [18.0]	0.709 [18.0]	0.709 [18.0]
W ₀ - Hold down tape width	0.591 [15.0]	0.591 [15.0]	0.591 [15.0]	0.591 [15.0]	0.591 [15.0]
D ₀ - Feed hole diameter	0.157 [4.0]	0.157 [4.0]	0.157 [4.0]	0.157 [4.0]	0.157 [4.0]
t - Totaltape thickness	0.028 [0.7]	0.028 [0.7]	0.028 [0.7]	0.028 [0.7]	0.028 [0.7]
L1 -Maximumlead protrusion	0.118 [3.0]	0.118 [3.0]	0.118 [3.0]	0.118 [3.0]	0.118 [3.0]

Note Terminal Code "I" = Tape and reel. Terminal Code "+" = Tape and ammo.
Positive leader is standard. Negative leader is available by special order.

ORDERING EXAMPLE

Electrolytic capacitor 678D series: 678D 108 M 6R3 DG 3 D

DESCRIPTION	
CODE	EXPLANATION
678D	product type
108	capacitance value (1000 µF)
M	tolerance (M = ± 20 %)
6R3	voltage rating at 105 °C (6R3 = 6.3 V)
DG	can size (see dimensions table)
3	sleeve and sealing (3 = p.v.c. sleeve w/epoxy end seal)
D	packaging (D = bulk; straight leads)

STANDARD RATINGS in inches [millimeters]						
CAPACITANCE (µF)	PART NUMBER	NOMINAL CASE SIZE D x L	Max. ESR at + 25 °C (mΩ)		Max. RIPPLE at + 105 °C (A) 20 kHz - 100 kHz	Max. IMPEDANCE at + 25 °C (mΩ) 100 Hz
			20 Hz	20 kHz		
6.3 WVDC at 105 °C, SURGE = 9 V						
330.0	678D337M6R3CC3D	0.394 x 0.512 [10.0 x 13.0]	0.540	0.213	0.36	0.213
470.0	678D477M6R3CD3D	0.394 x 0.630 [10.0 x 16.0]	0.340	0.133	0.49	0.132
1000.0	678D108M6R3DG3D	0.492 x 0.787 [12.5 x 20.0]	0.200	0.071	0.83	0.070
2200.0	678D228M6R3EK3D	0.630 x 0.984 [16.0 x 25.0]	0.110	0.041	1.36	0.045
3300.0	678D338M6R3DS3D	0.492 x 1.673 [12.5 x 42.5]	0.067	0.031	1.67	0.032
4700.0	678D478M6R3FR3D	0.709 x 1.417 [18.0 x 36.0]	0.066	0.029	2.02	0.031
10 WVDC at 105 °C, SURGE = 13 V						
330.0	678D337M010CD3D	0.394 x 0.630 [10.0 x 16.0]	0.350	0.135	0.46	0.134
470.0	678D477M010CG3D	0.394 x 0.787 [10.0 x 20.0]	0.235	0.092	0.63	0.090
1000.0 ⁽¹⁾	678D108M010DM3D	0.492 x 1.043 [12.5 x 26.5]	0.120	0.062	0.98	0.061
2200.0	678D228M010EK3D	0.630 x 0.984 [16.0 x 25.0]	0.115	0.042	1.52	0.046
3300.0	678D338M010EN3D	0.630 x 1.260 [16.0 x 32.0]	0.085	0.038	1.56	0.041
4700.0	678D487M010FR3D	0.709 x 1.417 [18.0 x 36.0]	0.070	0.031	1.97	0.033

Note

⁽¹⁾ These values are normally stocked.



Aluminum Capacitors
+ 105 °C, Miniature, Radial Lead

Vishay Sprague

STANDARD RATINGS in inches [millimeters]						
CAPACITANCE (μ F)	PART NUMBER	NOMINAL CASE SIZE D x L	Max. ESR at + 25 °C (m Ω)		Max. RIPPLE at + 105 °C (A) 20 kHz - 100 kHz	Max. IMPEDANCE at + 25 °C (m Ω) 100 Hz
			20 Hz	20 kHz		
16 WVDC at 105 °C, SURGE = 20 V						
220.0 ⁽¹⁾	678D227M016CC3D	0.394 x 0.512 [10.0 x 13.0]	0.585	0.217	0.40	0.217
330.0 ⁽¹⁾	678D337M016CD3D	0.394 x 0.630 [10.0 x 16.0]	0.370	0.137	0.52	0.136
470.0	678D477M016CG3D	0.394 x 0.787 [10.0 x 20.0]	0.250	0.098	0.70	0.094
1000.0 ⁽¹⁾	678D108M016DM3D	0.492 x 1.043 [12.5 x 26.5]	0.130	0.066	1.00	0.065
2200.0	678D228M016ER3D	0.630 x 1.417 [16.0 x 36.0]	0.074	0.032	1.78	0.034
3300.0	678D338M016FR3D	0.709 x 1.417 [18.0 x 36.0]	0.074	0.032	1.94	0.034
20 WVDC at 105 °C, SURGE = 30 V						
220.0	678D227M020CD3D	0.394 x 0.630 [10.0 x 16.0]	0.380	0.150	0.41	0.148
330.0	678D337M020CG3D	0.394 x 0.787 [10.0 x 20.0]	0.270	0.100	0.61	0.098
470.0	678D477M020DG3D	0.492 x 0.787 [12.5 x 20.0]	0.250	0.077	0.45	0.075
1000.0	678D108M020DT3D	0.492 x 1.280 [12.5 x 33.5]	0.115	0.048	0.78	0.045
2200.0	678D228M020ER3D	0.630 x 1.417 [16.0 x 36.0]	0.077	0.032	1.80	0.034
3300.0	678D338M020FV3D	0.709 x 1.575 [18.0 x 40.0]	0.061	0.026	2.25	0.028
25 WVDC at 105 °C, SURGE = 35 V						
100.0 ⁽¹⁾	678D107M025CC3D	0.394 x 0.512 [10.0 x 13.0]	0.700	0.250	0.32	0.250
220.0	678D227M025CG3D	0.394 x 0.787 [10.0 x 20.0]	0.300	0.105	0.59	0.100
330.0 ⁽¹⁾	678D337M025DG3D	0.492 x 0.787 [12.5 x 20.0]	0.270	0.078	0.79	0.076
470.0 ⁽¹⁾	678D477M025DM3D	0.492 x 1.043 [12.5 x 26.5]	0.160	0.067	0.97	0.068
1000.0	678D108M025DS3D	0.492 x 1.673 [12.5 x 42.5]	0.090	0.034	1.60	0.036
2200.0	678D228M025FV3D	0.709 x 1.575 [18.0 x 40.0]	0.062	0.026	2.22	0.028
40 WVDC at 105 °C, SURGE = 55 V						
47.0	678D476M040CC3D	0.394 x 0.512 [10.0 x 13.0]	0.950	0.265	0.28	0.265
100.0 ⁽¹⁾	678D107M040CD3D	0.394 x 0.630 [10.0 x 16.0]	0.580	0.165	0.38	0.165
330.0 ⁽¹⁾	678D337M040DM3D	0.492 x 1.043 [12.5 x 26.5]	0.200	0.068	0.93	0.070
470.0 ⁽¹⁾	678D477M040EK3D	0.630 x 0.984 [16.0 x 25.0]	0.133	0.046	1.28	0.050
1000.0	678D108M040ER3D	0.630 x 1.417 [16.0 x 36.0]	0.080	0.033	1.76	0.035
50 WVDC at 105 °C, SURGE = 75 V						
47.0	678D476M050CC3D	0.394 x 0.512 [10.0 x 13.0]	1.250	0.275	0.28	0.275
100.0 ⁽¹⁾	678D107M050CG3D	0.394 x 0.787 [10.0 x 20.0]	0.520	0.115	0.57	0.112
220.0	678D227M050DM3D	0.472 x 1.043 [12.5 x 26.5]	0.240	0.069	0.93	0.071
330.0	678D337M050EK3D	0.630 x 0.984 [16.0 x 25.0]	0.150	0.048	1.26	0.052
470.0	678D477M050DS3D	0.492 x 1.673 [12.5 x 42.5]	0.110	0.036	1.55	0.039
1000.0	678D108M050FV3D	0.709 x 1.575 [18.0 x 40.0]	0.077	0.028	2.15	0.032
63 WVDC at 105 °C, SURGE = 80 V						
33.0	678D336M063CC3D	0.394 x 0.512 [10.0 x 13.0]	1.600	0.288	0.27	0.288
47.0	678D476M063CD3D	0.394 x 0.630 [10.0 x 16.0]	1.000	0.180	0.37	0.180
100.0	678D107M063DG3D	0.492 x 0.787 [12.5 x 20.0]	0.450	0.093	0.72	0.090
220.0	678D227M063DT3D	0.492 x 1.280 [12.5 x 33.5]	0.160	0.055	1.10	0.054
220.0 ⁽¹⁾	678D227M063EK3D	0.630 x 0.984 [16.0 x 25.0]	0.170	0.050	1.23	0.054
330.0	678D337M063DS3D	0.492 x 1.673 [12.5 x 42.5]	0.130	0.038	1.51	0.040
470.0	678D477M063ER3D	0.630 x 1.417 [16.0 x 36.0]	0.120	0.035	1.70	0.038

Note

⁽¹⁾ These values are normally stocked.



Disclaimer

All product specifications and data are subject to change without notice.

Vishay Intertechnology, Inc., its affiliates, agents, and employees, and all persons acting on its or their behalf (collectively, "Vishay"), disclaim any and all liability for any errors, inaccuracies or incompleteness contained herein or in any other disclosure relating to any product.

Vishay disclaims any and all liability arising out of the use or application of any product described herein or of any information provided herein to the maximum extent permitted by law. The product specifications do not expand or otherwise modify Vishay's terms and conditions of purchase, including but not limited to the warranty expressed therein, which apply to these products.

No license, express or implied, by estoppel or otherwise, to any intellectual property rights is granted by this document or by any conduct of Vishay.

The products shown herein are not designed for use in medical, life-saving, or life-sustaining applications unless otherwise expressly indicated. Customers using or selling Vishay products not expressly indicated for use in such applications do so entirely at their own risk and agree to fully indemnify Vishay for any damages arising or resulting from such use or sale. Please contact authorized Vishay personnel to obtain written terms and conditions regarding products designed for such applications.

Product names and markings noted herein may be trademarks of their respective owners.