

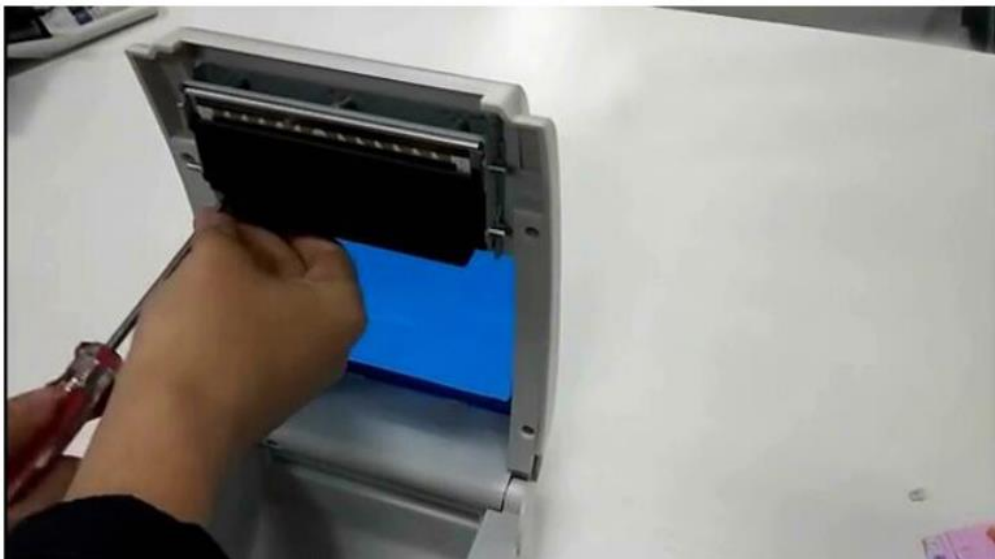
原裝佳博 GP1124D 打印頭



热敏头拆解过程

THERMAL HEAD DISASSEMBLY PROCESS

1. 拆下固定的模块的螺丝



2. 拆下该模块



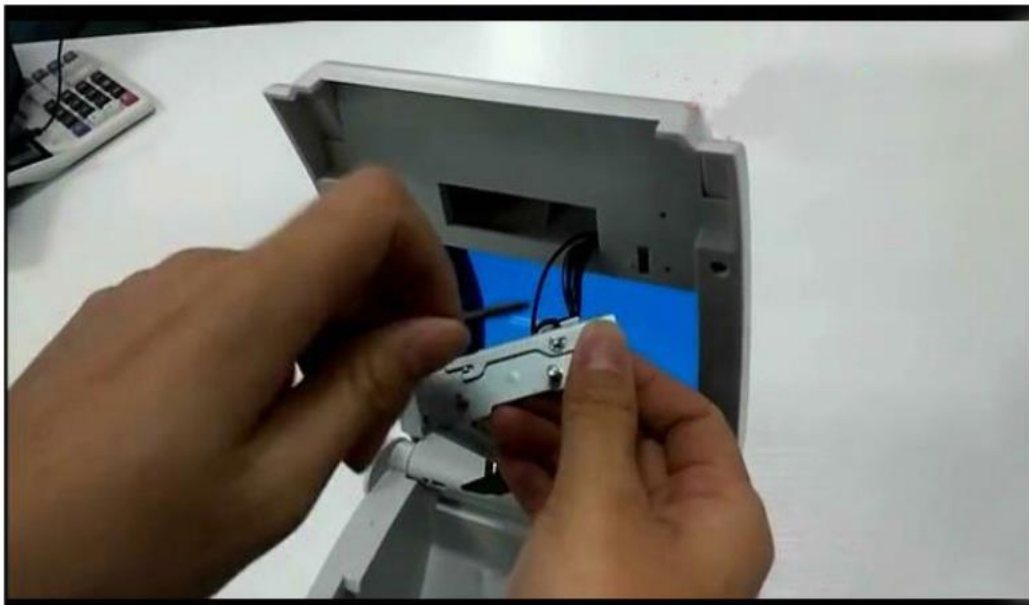
3. 拆下黑色挡板的螺丝



4. 可将黑色挡板取下



5. 拆下侧面固定弹片



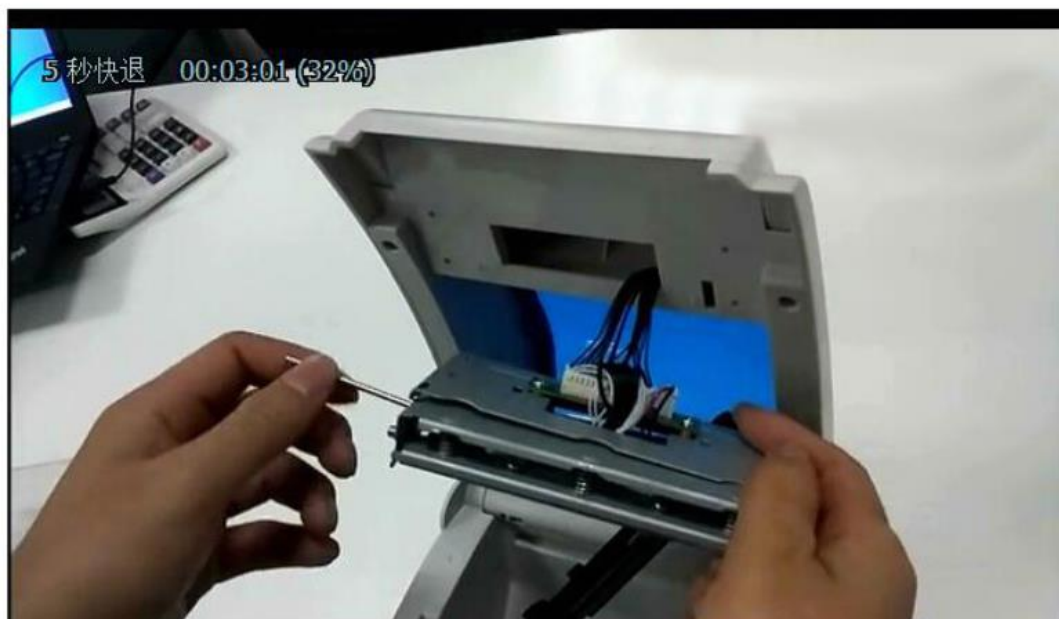
6. 拔掉后杆



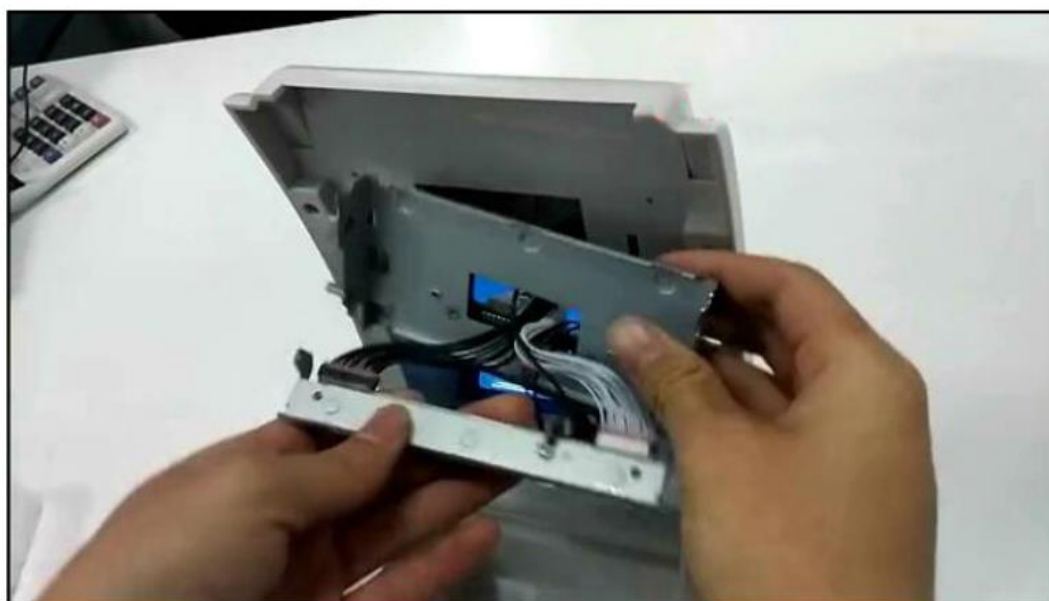
7. 掰开后盖



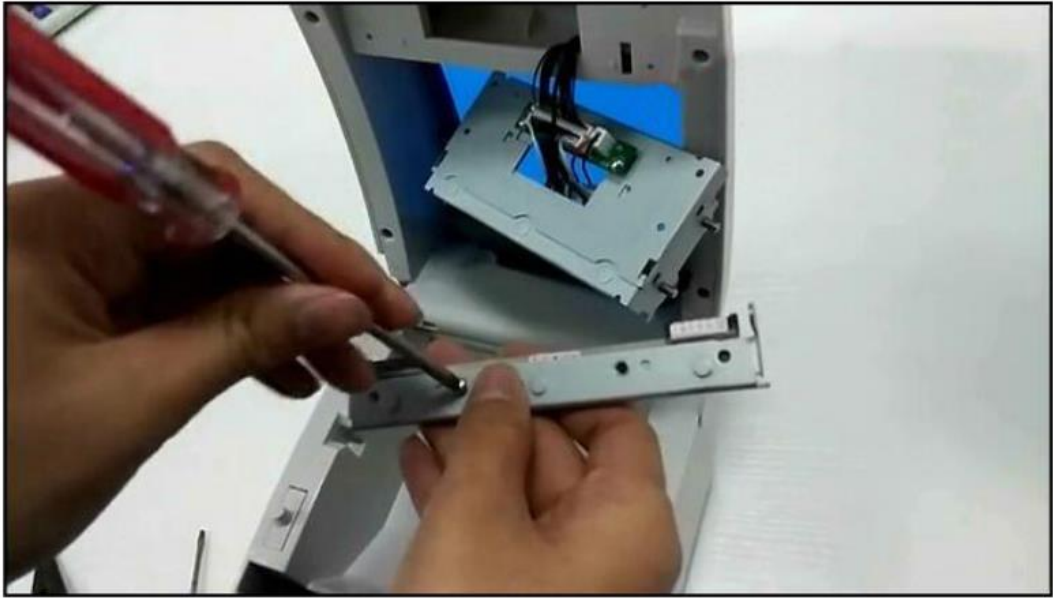
8.抽掉前杆



9.取下固定热敏头部件(注意排线左黑右白)



10.拆下固定的螺丝



11.取下旧的热敏头 更换新的，安装过程倒着来。

