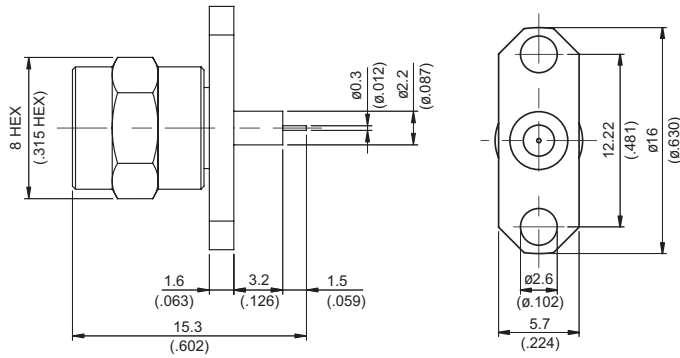


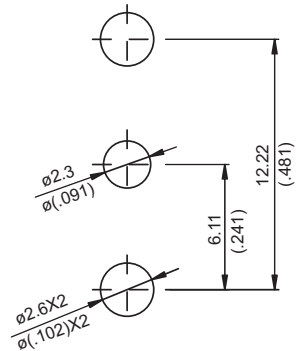
勝特力電材超市-龍山店 886-3-5773766  
 勝特力電材超市-光復店 886-3-5729570  
 勝特力電子(上海) 86-21-34970699  
 勝特力電子(深圳) 86-755-83298787  
<http://www.100y.com.tw>

SMA362NS-0032

SMA plug,  $\phi 16\text{mm}$  2 hole flange with round contact  
 $(\Phi 0.3; L=1.5)$ , PTFE  $L=3.2$ ; 18GHz VSWR1.2 and 27GHz VSWR1.3  $^{50\Omega}$



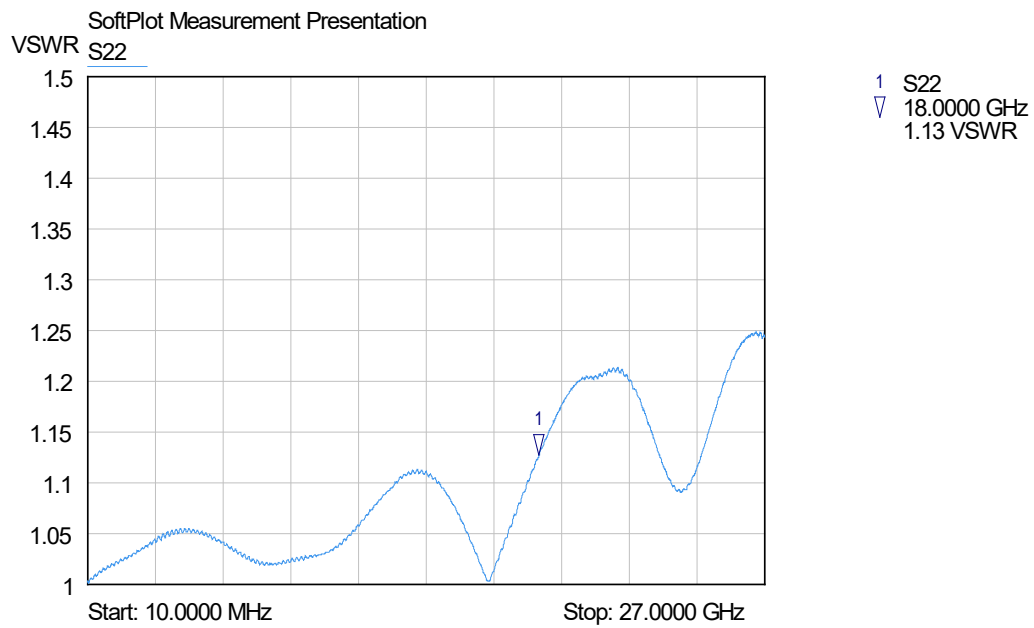
MOUNTING HOLE



Parts	Material	Plating (Micro-inch)
Renber Ring	Beryllium Copper	Tin-Zinc-Copper-Alloy 100 Over Copper 50
Gasket	Silicon	
Contact Pin	Brass	Gold 4 Over Nickel-Phosphorus Alloy 80 Over Copper 20
Insulator	Teflon	
Body	Stainless Steel	Passivated
Coupling Nut	Stainless Steel	Passivated

SMA	SMA362NS-0032
<div data-bbox="167 344 569 394" style="border: 1px solid black; padding: 2px;">Interface</div> <p data-bbox="167 405 384 434">MIL-STD-348B</p> <p data-bbox="167 450 1007 479">Mechanically compatible with 2.92 &amp; 3.5</p>	
<div data-bbox="167 512 569 562" style="border: 1px solid black; padding: 2px;">Electrical Data</div> <p data-bbox="167 568 911 598">Impedance 50Ω</p> <p data-bbox="167 613 1043 642">Frequency range DC to 27GHz</p> <p data-bbox="167 658 1278 687">VSWR <math>\leq 1.2</math> (18GHz); <math>\leq 1.3</math> (27GHz)</p> <p data-bbox="167 703 1142 732">Insertion loss <math>\leq 0.04 \times \sqrt{f(\text{GHz})}</math> dB</p> <p data-bbox="167 748 1007 777">Insulation resistance <math>\geq 5000\text{M}\Omega</math></p> <p data-bbox="167 792 954 822">Contact resistance inner conductor <math>\leq 3\text{m}\Omega</math></p> <p data-bbox="167 837 954 866">Contact resistance outer conductor <math>\leq 2\text{m}\Omega</math></p> <p data-bbox="167 882 1018 911">Dielectric withstanding voltage (at sea level) 1500 V rms</p> <p data-bbox="167 927 999 956">Working voltage (at sea level) 500 V rms</p>	
<div data-bbox="167 1057 569 1106" style="border: 1px solid black; padding: 2px;">Mechanical Data</div> <p data-bbox="167 1113 1078 1142">Recommended coupling nut torque 7 to 9.5 inch lbs</p> <p data-bbox="167 1158 1007 1187">Coupling proof torque 15 inch lbs</p> <p data-bbox="167 1202 999 1232">Coupling nut retention force <math>\geq 60.7</math> lbs</p> <p data-bbox="167 1247 979 1276">Contact Captivation-axial <math>\geq 6.1</math> lbs</p> <p data-bbox="167 1292 940 1321">Durability (mating) <math>\geq 500</math></p>	
<div data-bbox="167 1413 569 1462" style="border: 1px solid black; padding: 2px;">Environmental Data</div> <p data-bbox="167 1469 1090 1498">Temperature range -40°C to +165°C</p> <p data-bbox="167 1514 1422 1543">Thermal shock MIL-STD-202, Method 107, Condition B</p> <p data-bbox="167 1559 1235 1588">Moisture resistance MIL-STD-202, Method 106</p> <p data-bbox="167 1603 1422 1632">Corrosion MIL-STD-202, Method 101, Condition B</p> <p data-bbox="167 1648 999 1677">RoHS Compliant</p>	
<div data-bbox="167 1765 569 1814" style="border: 1px solid black; padding: 2px;">Tooling</div>	

# SMA362NS-0032 (Tested back to back)



勝特力電材超市-龍山店 886-3-5773766  
勝特力電材超市-光復店 886-3-5729570  
勝特力電子(上海) 86-21-34970699  
勝特力電子(深圳) 86-755-83298787  
<http://www.100y.com.tw>