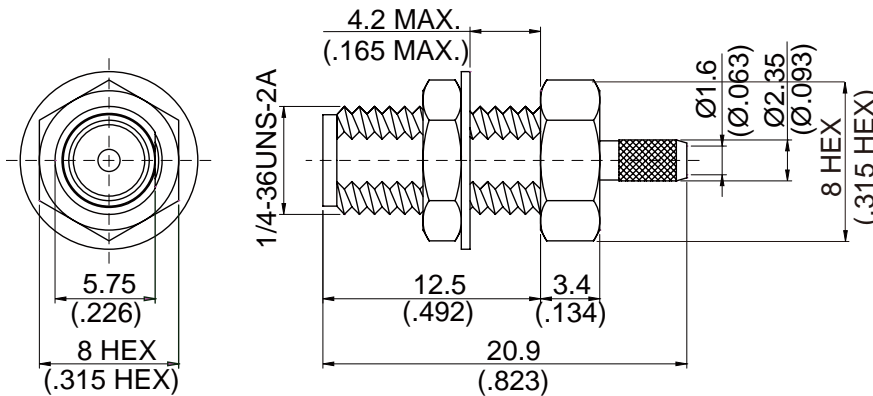


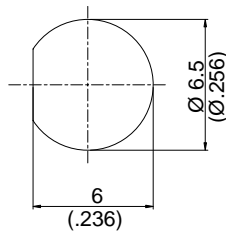
勝特力電材超市-龍山店 886-3-5773766
 勝特力電材超市-光復店 886-3-5729570
 勝特力电子(上海) 86-21-34970699
 勝特力电子(深圳) 86-755-83298787
<http://www.100y.com.tw>

SMA8100L1D-0316

SMA Jack Crimp Bulkhead
For RD316,RD316-FEP; 12.4GHz VSWR 1.2 50Ω



MOUNTING HOLE:



Parts	Material	Plating (Micro-inch)
Ferrule	Copper	Gold 4 Over Nickel Phosphorous Alloy 80 Over Copper 20
Hex Nut	Brass	Gold 4 Over Nickel Phosphorous Alloy 80 Over Copper 20
Lock Washer	Brass	Gold 4 Over Nickel Phosphorous Alloy 80 Over Copper 20
Contact Pin	Beryllium Copper	Gold 4 Over Nickel Phosphorous Alloy 80 Over Copper 20
Barrel	Brass	Gold 4 Over Nickel Phosphorous Alloy 80 Over Copper 20
Insulator	Teflon	
Body	Brass	Gold 4 Over Nickel Phosphorous Alloy 80 Over Copper 20

Suitable Cables:RD316,RD316-FEP

This part number complies with RoHS.

Notice: JYBAO reserves the right to make modifications deemed appropriate.

SMA	SMA8100L1D-0316	
<div data-bbox="172 387 571 432" style="border: 1px solid black; padding: 2px;">Interface</div> <p data-bbox="172 443 387 477">MIL-STD-348B</p> <p data-bbox="172 488 587 521">Mechanically compatible with</p>		2.92 & 3.5
<div data-bbox="172 555 571 600" style="border: 1px solid black; padding: 2px;">Electrical Data</div> <p data-bbox="172 611 331 645">Impedance</p> <p data-bbox="172 656 419 689">Frequency range</p> <p data-bbox="172 701 276 734">VSWR</p> <p data-bbox="172 745 363 779">Insertion loss</p> <p data-bbox="172 790 467 824">Insulation resistance</p> <p data-bbox="172 835 675 869">Contact resistance inner conductor</p> <p data-bbox="172 880 675 913">Contact resistance outer conductor</p> <p data-bbox="172 925 802 958">Dielectric withstanding voltage (at sea level)</p> <p data-bbox="172 969 595 1003">Working voltage (at sea level)</p>		<p>50Ω</p> <p>DC to 12.4GHz</p> <p>≤ 1.2 (DC to 12.4GHz)</p> <p>≤ 0.04 x √f(GHz) dB</p> <p>≥ 5000MΩ</p> <p>≤ 3mΩ</p> <p>≤ 2mΩ</p> <p>750 V rms</p> <p>250 V rms</p>
<div data-bbox="172 1093 571 1137" style="border: 1px solid black; padding: 2px;">Mechanical Data</div> <p data-bbox="172 1149 675 1182">Recommended coupling nut torque</p> <p data-bbox="172 1193 483 1227">Coupling proof torque</p> <p data-bbox="172 1238 531 1272">Contact Captivation-axial</p> <p data-bbox="172 1283 435 1317">Durability (mating)</p>		<p>4 inch lbs</p> <p>5.3 inch lbs</p> <p>≥ 6.1 lbs</p> <p>≥ 100</p>
<div data-bbox="172 1406 571 1451" style="border: 1px solid black; padding: 2px;">Environmental Data</div> <p data-bbox="172 1462 451 1496">Temperature range</p> <p data-bbox="172 1507 387 1541">Thermal shock</p> <p data-bbox="172 1552 451 1585">Moisture resistance</p> <p data-bbox="172 1597 316 1630">Corrosion</p> <p data-bbox="172 1641 260 1675">RoHS</p>		<p>-65°C to +165°C</p> <p>MIL-STD-202, Method 107, Condition B</p> <p>MIL-STD-202, Method 106</p> <p>MIL-STD-202, Method 101, Condition B</p> <p>Compliant</p>
<div data-bbox="172 1753 571 1798" style="border: 1px solid black; padding: 2px;">Tooling</div> <p data-bbox="172 1809 363 1843">Crimping tool</p> <p data-bbox="172 1854 347 1888">Crimp insert</p> <p data-bbox="172 1899 411 1933">Soldering gauge</p>		<p>CRT-1 or CRT-2</p> <p>INSERT-A</p> <p>ST-0.5</p>

Notice: JYEBAO reserves the right to make modifications deemed appropriate.

CABLE ASSEMBLY INSTRUCTION

SMA8100L1D-0316	DATE	2015/12/15	REV	—
-----------------	------	------------	-----	---

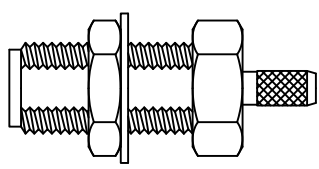
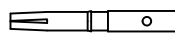
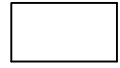
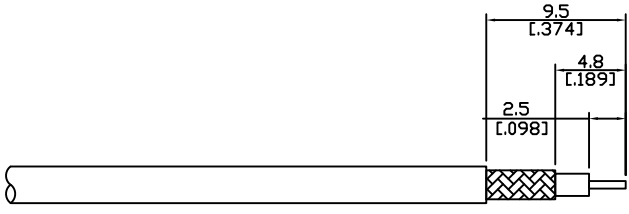
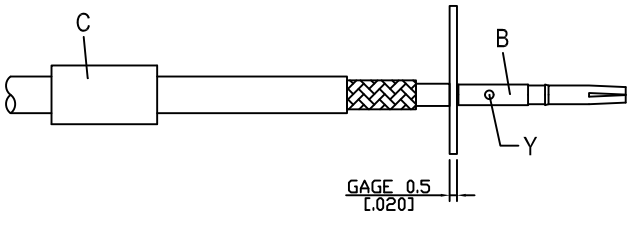
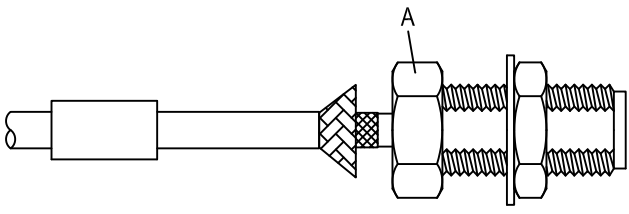
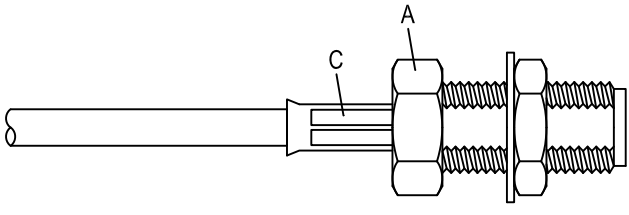
A	B	C
		
BODY	CONTACT PIN	FERRULE

DIAGRAM	ASSEMBLY INSTRUCTION
---------	----------------------

	<p>Step 1: STRIP AS SHOWN.</p>
--	--------------------------------

	<p>Step 2: SLIDE FERRULE " C " OVER CABLE. Step 7: PUT 0.5 MM GAGE IN PLACE, INSERT CABLE'S CENTER CONDUCTOR INTO CENTER PIN " B " AND SOLDER IN " Y ".</p>
---	--

	<p>Step 4: LOOSEN BRAIDING AND SLIDE CONNECTOR " A " IN PLACE.</p>
---	--

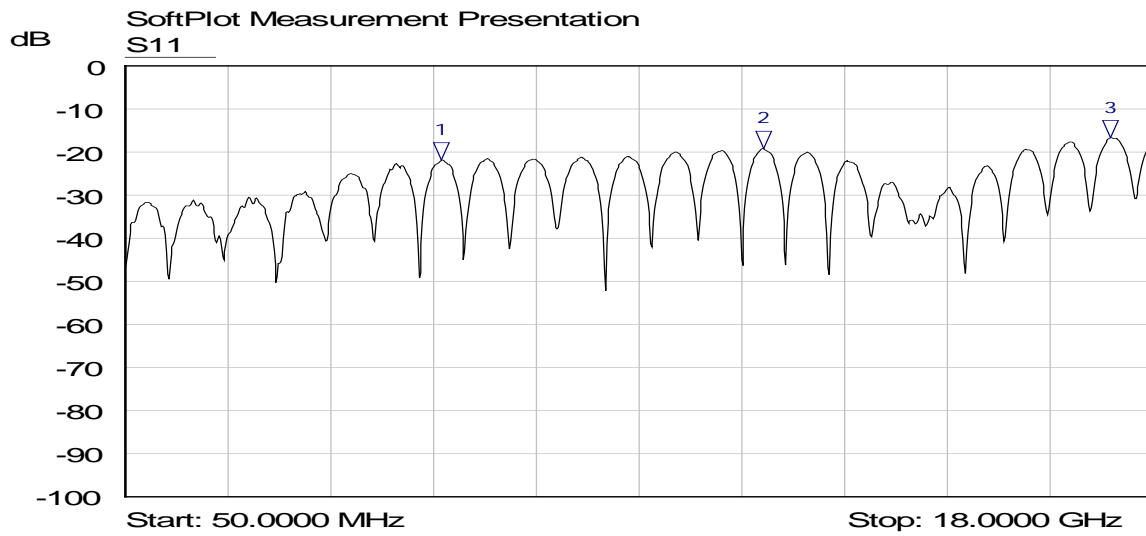
	<p>Step 5: SLIDE FERRULE " C " TOWARDS THE CONNECTOR " A " AND CRIMP. (USE 3.3mm/0.130inch HEX SECTION OF INSERT-A)</p>
---	--

This part number complies with RoHS.
 Notice: JYEBAO reserves the right to make modifications deemed appropriate.

APPROVED	CHECKED	DRAWING
----------	---------	---------

Albert

SMA8100L1D-0316



Mkr	Trace	X-Axis	Value	Notes
1 ▽	S11	5.5808 GHz	-21.82 dB	
2 ▽	S11	11.1914 GHz	-19.22 dB	
3 ▽	S11	17.2612 GHz	-16.71 dB	

勝特力電材超市-龍山店 886-3-5773766
勝特力電材超市-光復店 886-3-5729570
勝特力電子(上海) 86-21-34970699
勝特力電子(深圳) 86-755-83298787
<http://www.100y.com.tw>