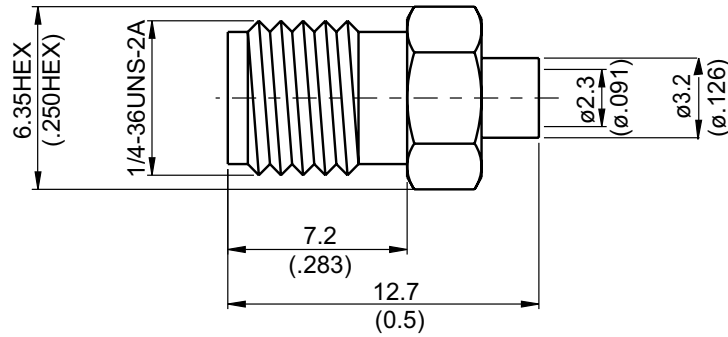


SMA8300-0085

SMA Jack Solder For RG405
27GHz VSWR 1.2

50Ω



Parts	Material	Plating (Micro-inch)
Contact Pin	Beryllium Copper	Gold 4 Over Nickel-Phosphorus Alloy 80 Over Copper 20
Insulator	Teflon	
Body	Brass	Gold 4 Over Nickel-Phosphorus Alloy 80 Over Copper 20

Weight: 1.52 g

Suitable Cables: Semi-rigid.085

SMA

SMA8300-0085

Interface

MIL-STD-348B

Mechanically compatible with

2.92 & 3.5

Electrical Data

Impedance

50Ω

Frequency range

DC to 27GHz

VSWR

 ≤ 1.2 (DC to 27GHz)

Insertion loss

 $\leq 0.04 \times \sqrt{f(\text{GHz})}$ dB

Insulation resistance

 $\geq 5000\text{M}\Omega$

Contact resistance inner conductor

 $\leq 3\text{m}\Omega$

Contact resistance outer conductor

 $\leq 2\text{m}\Omega$

Dielectric withstanding voltage (at sea level)

1000 V rms

Working voltage (at sea level)

335 V rms

Mechanical Data

Recommended coupling nut torque

4 inch lbs

Coupling proof torque

5.3 inch lbs

Contact Captivation-axial

 ≥ 6.1 lbs

Durability (mating)

 ≥ 100

Environmental Data

Temperature range

-65°C to +165°C

Thermal shock

MIL-STD-202, Method 107, Condition B

Moisture resistance

MIL-STD-202, Method 106

Corrosion

MIL-STD-202, Method 101, Condition B

RoHS

Compliant

Tooling

Soldering gauge

ST-0.4

Soldering fixture

ST-008

Locator tool

ST-011

Insert for .085 semi-rigid cable

ST-009

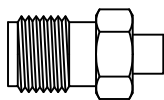
Dielectric insertion tool

ST-004

A

B

C



BODY

CONTACT PIN

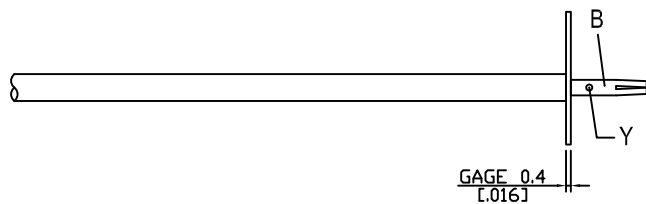
INSULATOR

DIAGRAM

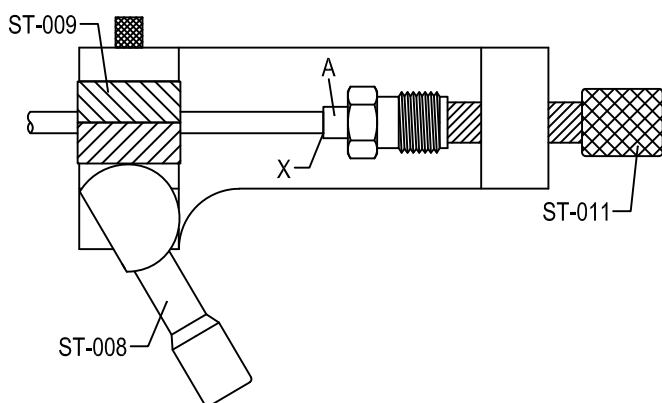
ASSEMBLY INSTRUCTION



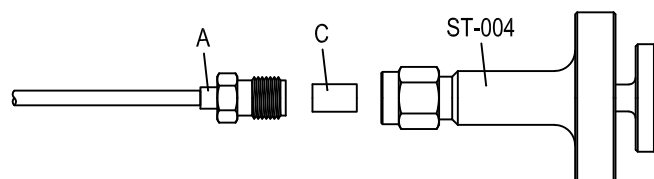
Step 1: STRIP AS SHOWN.



Step 2: PUT 0.4 MM GAGE IN PLACE, INSERT CABLE'S CENTER CONDUCTOR INTO CENTER PIN " B " AND SOLDER IN " Y ".

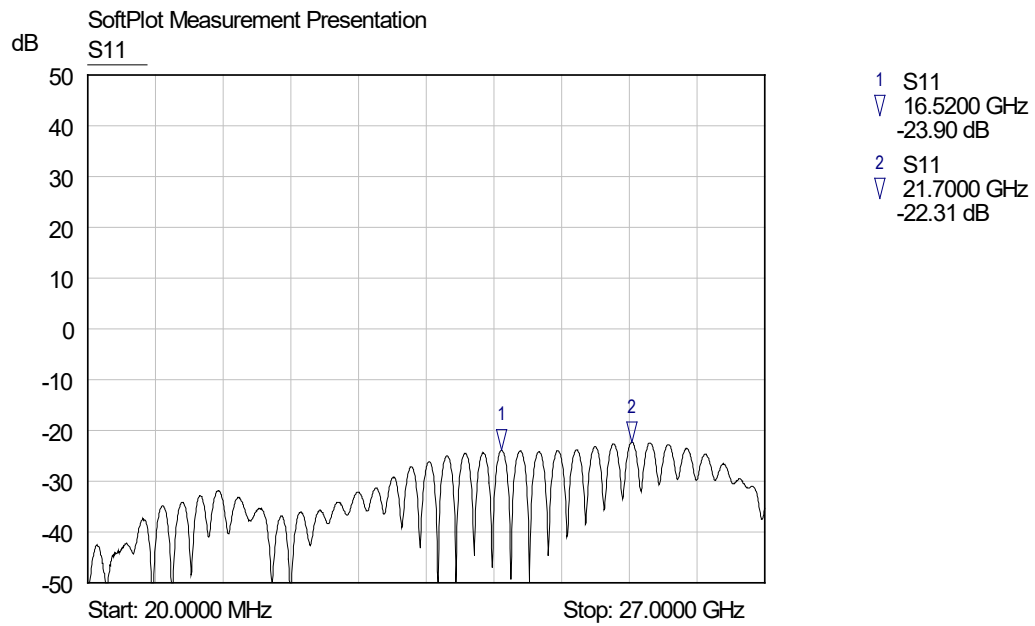


Step 3: USE SOLDERING FIXTURE " ST-008 ", INSERT TOOL " ST-009 " AND LOCATOR TOOL " ST-011 " TO FIX THE CONNECTOR. SOLDER IN " X ".



Step 4: USE DIELECTRIC INSERTION TOOL " ST-004 " TO INSERT THE TEFLON " C ".

SMA8300-0085



勝特力電材超市-龍山店 886-3-5773766
勝特力電材超市-光復店 886-3-5729570
勝特力電子(上海) 86-21-34970699
勝特力電子(深圳) 86-755-83298787
<http://www.100y.com.tw>