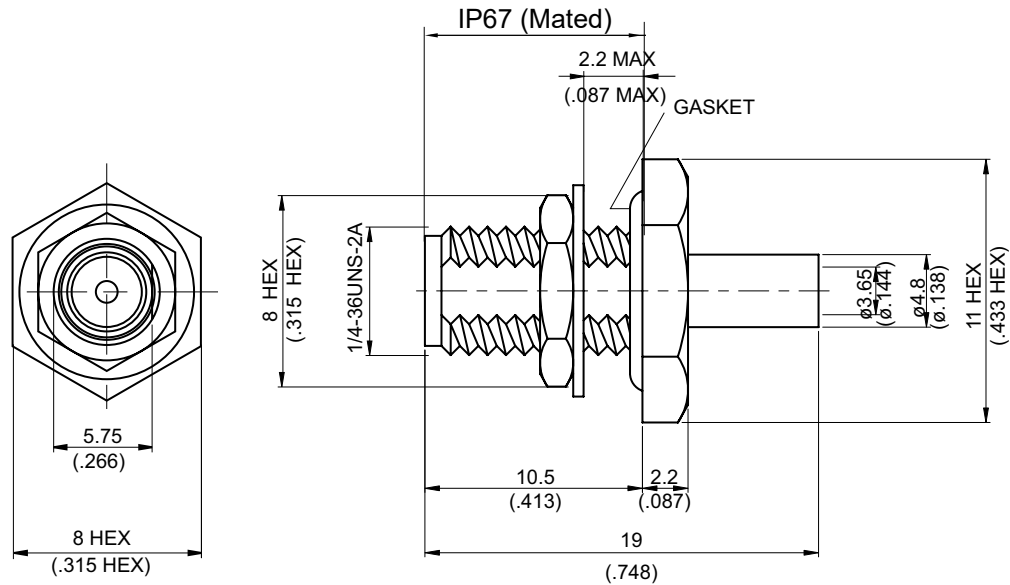


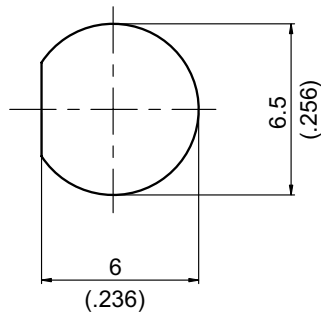
SMA8305-0141

SMA Jack Solder Bulkhead For RG402
IP67 mated; 18GHz VSWR 1.2

50Ω



MOUNTING HOLE :



Parts	Material	Plating (Micro-inch)
Hex Nut	Brass	Gold 4 Over Nickel-Phosphorus Alloy 80 Over Copper 20
Lock Washer	Brass	Gold 4 Over Nickel-Phosphorus Alloy 80 Over Copper 20
Gasket	Silicon	
Contact Pin	Beryllium Copper	Gold 4 Over Nickel-Phosphorus Alloy 80 Over Copper 20
Insulator	Teflon	
Body	Brass	Gold 4 Over Nickel-Phosphorus Alloy 80 Over Copper 20

Weight: 3.66 g

Suitable Cables: Semi-rigid.141

SMA

SMA8305-0141

Interface

MIL-STD-348B

Mechanically compatible with

2.92 & 3.5

Electrical Data

Impedance

50Ω

Frequency range

DC to 18GHz

VSWR

 ≤ 1.2 (DC to 18GHz)

Insertion loss

 $\leq 0.04 \times \sqrt{f(\text{GHz})}$ dB

Insulation resistance

 $\geq 5000\text{M}\Omega$

Contact resistance inner conductor

 $\leq 3\text{m}\Omega$

Contact resistance outer conductor

 $\leq 2\text{m}\Omega$

Dielectric withstanding voltage (at sea level)

1500 V rms

Working voltage (at sea level)

500 V rms

Mechanical Data

Recommended coupling nut torque

4 inch lbs

Coupling proof torque

5.3 inch lbs

Contact Captivation-axial

 ≥ 6.1 lbs

Durability (mating)

 ≥ 100

Environmental Data

Temperature range

-65°C to +165°C

Thermal shock

MIL-STD-202, Method 107, Condition B

Moisture resistance

MIL-STD-202, Method 106

Corrosion

MIL-STD-202, Method 101, Condition B

RoHS

Compliant

Tooling

Locator tool

ST-011

Soldering fixture

ST-008

Insert for .141semi-rigid cable

ST-010

Soldering gauge

ST-0.3

Dielectric insertion tool

ST-004

CABLE ASSEMBLY INSTRUCTION

SMA8305-0141

DATE

2020/04/11

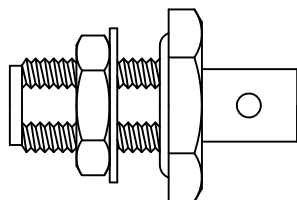
REV

A

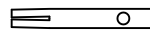
A

B

C



BODY + HEX NUT
+ LOCK WASHER
+ GASKET



CONTACT PIN



INSULATOR

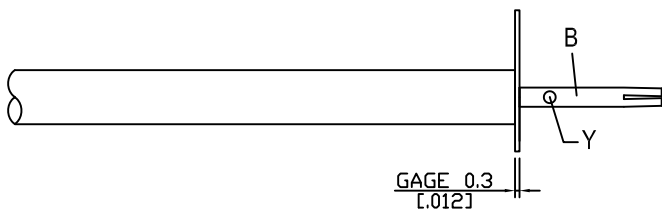
DIAGRAM

ASSEMBLY INSTRUCTION

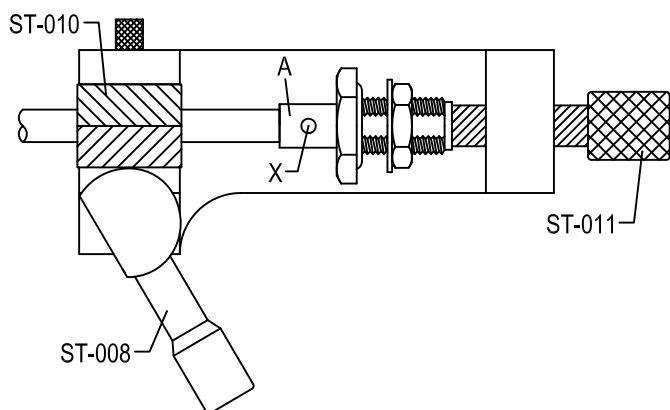
Step 1: STRIP AS SHOWN.



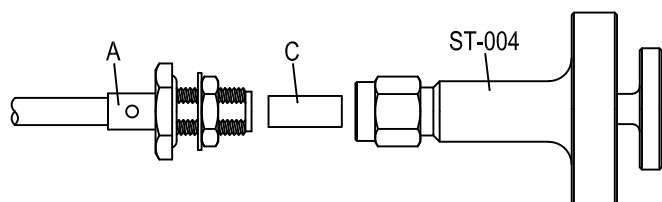
Step 2: PUT 0.3 MM GAGE ST-0.3 IN PLACE, INSERT CABLE'S CENTER CONDUCTOR INTO CENTER PIN " B " AND SOLDER IN " Y " .



Step 3: USE SOLDERING FIXTURE " ST-008 ", INSERT TOOL " ST-010 " AND LOCATOR TOOL " ST-011 " TO FIX THE CONNECTOR. SOLDER IN " X " .



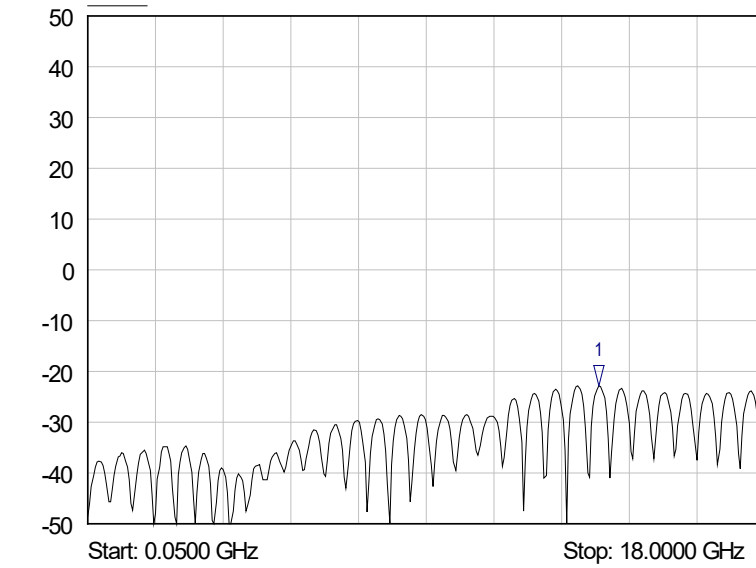
Step4: USE DIELECTRIC INSERTION TOOL " ST-004 " TO INSERT THE TEFLON " C " .



This part number complies with RoHS.

SMA8305-0141

SoftPlot Measurement Presentation
S11



1 S11
▽ 13.6000 GHz
-22.80 dB

勝特力電材超市-龍山店 886-3-5773766
勝特力電材超市-光復店 886-3-5729570
勝特力電子(上海) 86-21-34970699
勝特力電子(深圳) 86-755-83298787
<http://www.100y.com.tw>