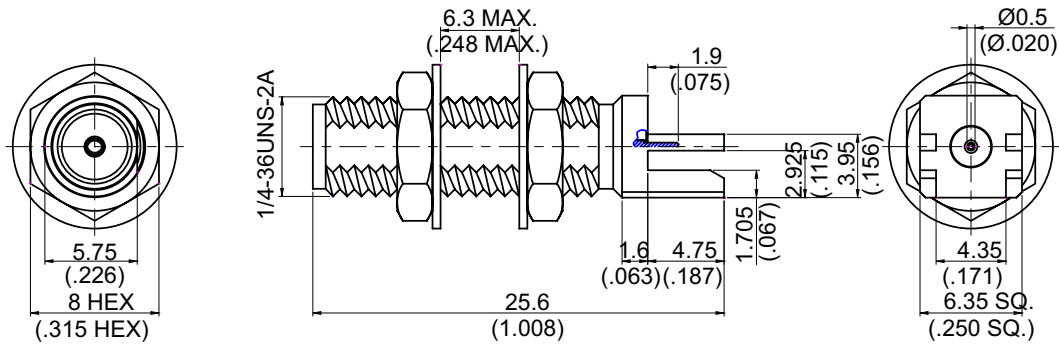
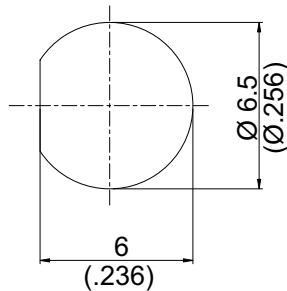


勝特力電材超市-龍山店 886-3-5773766
 勝特力電材超市-光復店 886-3-5729570
 勝特力電子(上海) 86-21-34970699
 勝特力電子(深圳) 86-755-83298787
<http://www.100y.com.tw>

SMA8403F-0000 SMA Jack PCB Mount For Bulkhead End Launch (T=1.22)
With Round Contact (Φ0.5); 27GHz VSWR 1.2 50Ω



MOUNTING HOLES



Parts	Material	Plating (Micro-inch)
Hex Nut	Brass	Gold 4 Over Nickel-Phosphorous Alloy 80 Over Copper 20
Lock Washer	Brass	Gold 4 Over Nickel-Phosphorous Alloy 80 Over Copper 20
Contact Pin	Beryllium Copper	Gold 4 Over Nickel-Phosphorous Alloy 80 Over Copper 20
Insulator	Teflon	
Body	Brass	Gold 4 Over Nickel-Phosphorous Alloy 80 Over Copper 20

This part number complies with RoHS.

Notice: JYBAO reserves the right to make modifications deemed appropriate.

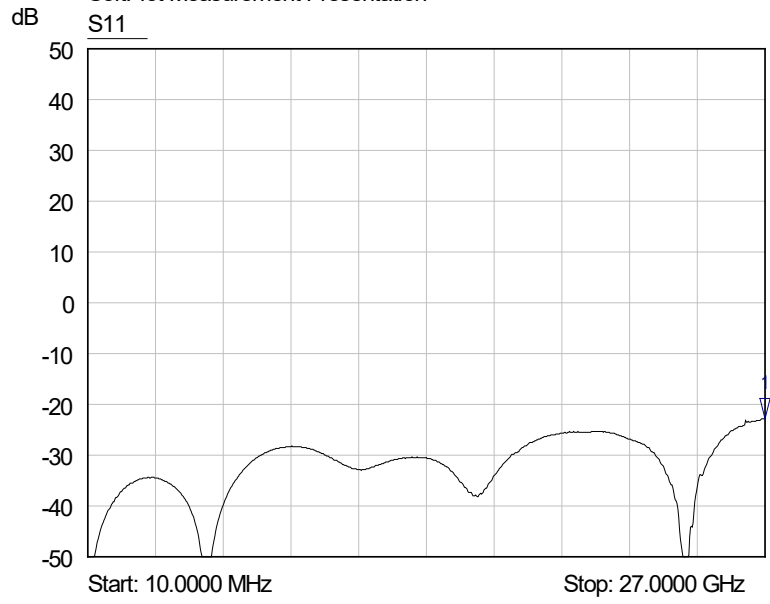
SMA	SMA8403F-0000
<div data-bbox="169 387 568 432" style="border: 1px solid black; padding: 2px;">Interface</div> <p data-bbox="169 443 384 477">MIL-STD-348B</p> <p data-bbox="169 488 1007 521">Mechanically compatible with 2.92 & 3.5</p>	
<div data-bbox="169 555 568 600" style="border: 1px solid black; padding: 2px;">Electrical Data</div> <p data-bbox="169 611 916 645">Impedance 50Ω</p> <p data-bbox="169 656 1046 689">Frequency range DC to 27GHz</p> <p data-bbox="169 701 1153 734">VSWR ≤ 1.2 (DC to 27GHz)</p> <p data-bbox="169 745 1150 779">Insertion loss $\leq 0.04 \times \sqrt{f(\text{GHz})}$ dB</p> <p data-bbox="169 790 1010 824">Insulation resistance $\geq 5000\text{M}\Omega$</p> <p data-bbox="169 835 956 869">Contact resistance inner conductor $\leq 3\text{m}\Omega$</p> <p data-bbox="169 880 956 913">Contact resistance outer conductor $\leq 2\text{m}\Omega$</p> <p data-bbox="169 925 1019 958">Dielectric withstanding voltage (at sea level) 1500 V rms</p> <p data-bbox="169 969 1002 1003">Working voltage (at sea level) 500 V rms</p>	
<div data-bbox="169 1093 568 1137" style="border: 1px solid black; padding: 2px;">Mechanical Data</div> <p data-bbox="169 1149 991 1182">Recommended coupling nut torque 4 inch lbs</p> <p data-bbox="169 1193 1018 1227">Coupling proof torque 5.3 inch lbs</p> <p data-bbox="169 1238 983 1272">Contact Captivation-axial ≥ 6.1 lbs</p> <p data-bbox="169 1283 943 1317">Durability (mating) ≥ 100</p>	
<div data-bbox="169 1406 568 1451" style="border: 1px solid black; padding: 2px;">Environmental Data</div> <p data-bbox="169 1462 1091 1496">Temperature range -65°C to +165°C</p> <p data-bbox="169 1507 1422 1541">Thermal shock MIL-STD-202, Method 107, Condition B</p> <p data-bbox="169 1552 1235 1585">Moisture resistance MIL-STD-202, Method 106</p> <p data-bbox="169 1597 1422 1630">Corrosion MIL-STD-202, Method 101, Condition B</p> <p data-bbox="169 1641 1002 1675">RoHS Compliant</p>	
<div data-bbox="169 1753 568 1798" style="border: 1px solid black; padding: 2px;">Tooling</div>	

Notice: JYEBAO reserves the right to make modifications deemed appropriate.

SMA8403F-0000

S11

SoftPlot Measurement Presentation



1 S11
▼ 27.0000 GHz
-22.84 dB

勝特力電材超市-龍山店 886-3-5773766
勝特力電材超市-光復店 886-3-5729570
勝特力電子(上海) 86-21-34970699
勝特力電子(深圳) 86-755-83298787
<http://www.100y.com.tw>