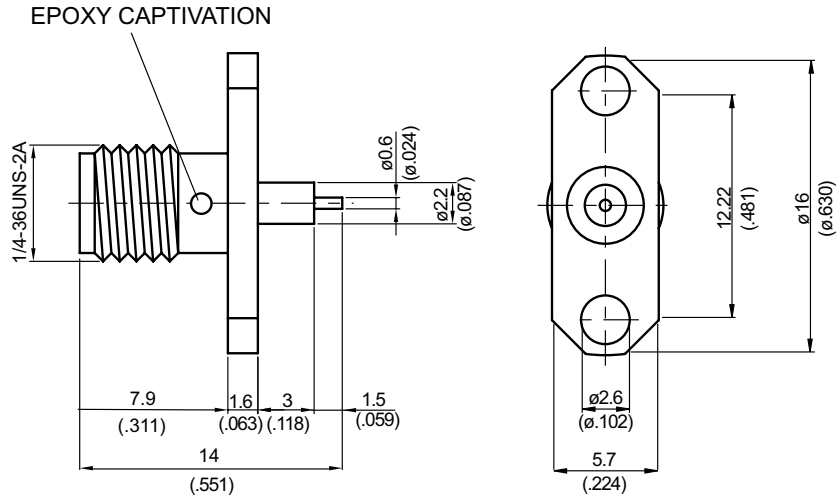
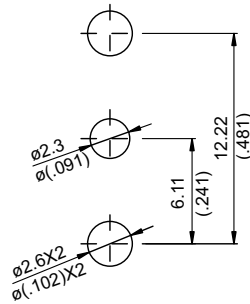


SMA862N3S-0000

SMA Jack $\phi 16\text{mm}$ 2 Hole Flange With Round Contact ($\Phi 0.6; L=1.5$), PTFE $L=3$; 6GHz VSWR 1.2 **50 Ω**



MOUNTING HOLE :

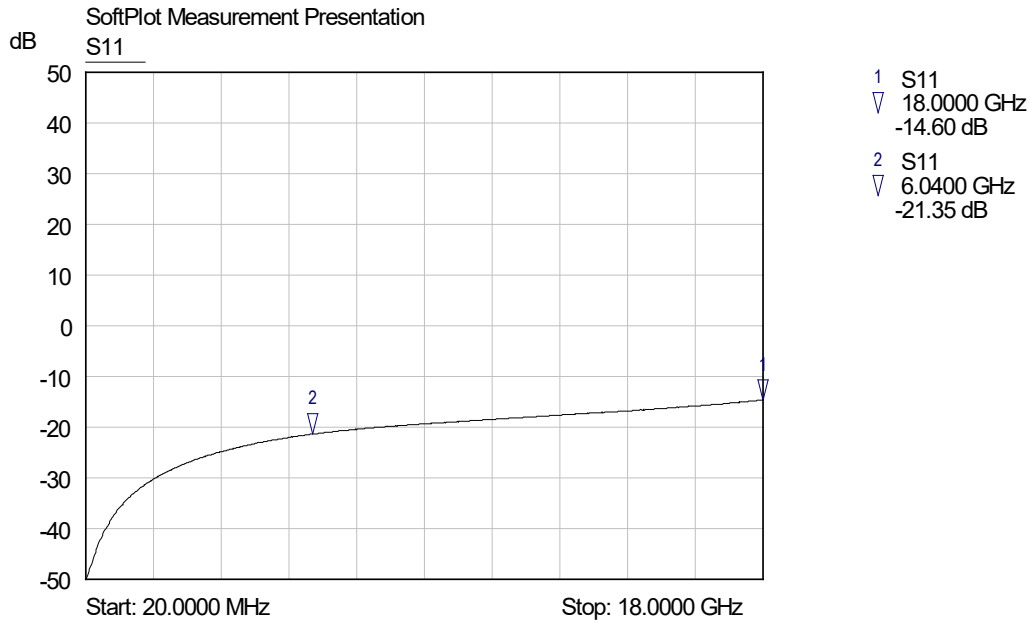


Parts	Material	Plating (Micro-inch)
Contact Pin	Beryllium Copper	Gold 4 Over Nickel-Phosphorus Alloy 80 Over Copper 20
Insulator	Teflon	
Body	Stainless	Passivated

Weight: 1.75 g

SMA	SMA862N3S-0000
<div data-bbox="167 342 568 392" style="border: 1px solid black; padding: 2px;">Interface</div> <p data-bbox="167 405 384 434">MIL-STD-348B</p> <p data-bbox="167 450 991 488">Mechanically compatible with 2.92 & 3.5</p>	
<div data-bbox="167 506 568 555" style="border: 1px solid black; padding: 2px;">Electrical Data</div> <p data-bbox="167 566 900 600">Impedance 50Ω</p> <p data-bbox="167 613 1011 647">Frequency range DC to 6GHz</p> <p data-bbox="167 660 1118 694">VSWR ≤ 1.2 (DC to 6GHz)</p> <p data-bbox="167 707 1134 741">Insertion loss $\leq 0.04 \times \sqrt{f(\text{GHz})}$ dB</p> <p data-bbox="167 754 991 788">Insulation resistance $\geq 5000\text{M}\Omega$</p> <p data-bbox="167 801 940 835">Contact resistance inner conductor $\leq 3\text{m}\Omega$</p> <p data-bbox="167 848 940 882">Contact resistance outer conductor $\leq 2\text{m}\Omega$</p> <p data-bbox="167 896 1007 929">Dielectric withstanding voltage (at sea level) 1500 V rms</p> <p data-bbox="167 943 986 976">Working voltage (at sea level) 500 V rms</p>	
<div data-bbox="167 1050 568 1099" style="border: 1px solid black; padding: 2px;">Mechanical Data</div> <p data-bbox="167 1111 1062 1144">Recommended coupling nut torque 7 to 9.5 inch lbs</p> <p data-bbox="167 1158 991 1191">Coupling proof torque 15 inch lbs</p> <p data-bbox="167 1205 983 1238">Coupling nut retention force ≥ 60.7 lbs</p> <p data-bbox="167 1252 967 1285">Contact Captivation-axial ≥ 6.1 lbs</p> <p data-bbox="167 1299 924 1332">Durability (mating) ≥ 500</p>	
<div data-bbox="167 1402 568 1451" style="border: 1px solid black; padding: 2px;">Environmental Data</div> <p data-bbox="167 1462 1075 1496">Temperature range -65°C to +165°C</p> <p data-bbox="167 1509 1406 1543">Thermal shock MIL-STD-202, Method 107, Condition B</p> <p data-bbox="167 1556 1219 1590">Moisture resistance MIL-STD-202, Method 106</p> <p data-bbox="167 1603 1406 1637">Corrosion MIL-STD-202, Method 101, Condition B</p> <p data-bbox="167 1650 986 1684">RoHS Compliant</p>	
<div data-bbox="167 1753 568 1803" style="border: 1px solid black; padding: 2px;">Tooling</div>	

S11



勝特力電材超市-龍山店 886-3-5773766
勝特力電材超市-光復店 886-3-5729570
勝特力电子(上海) 86-21-34970699
勝特力电子(深圳) 86-755-83298787
<http://www.100y.com.tw>