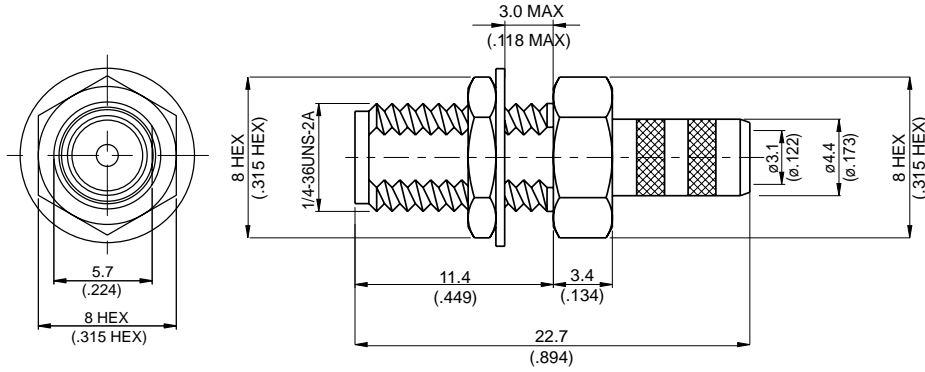


勝特力電材超市-龍山店 886-3-5773766
 勝特力電材超市-光復店 886-3-5729570
 勝特力电子(上海) 86-21-34970699
 勝特力电子(深圳) 86-755-83298787
<http://www.100y.com.tw>

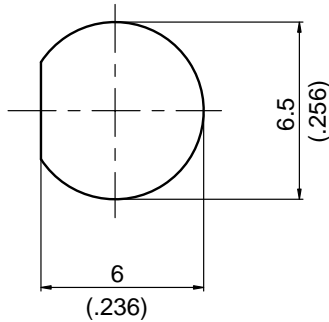
SMA9100L-0058

SMA reverse polarity jack crimp bulkhead
For RG58, JBY195, LMR195; 6GHz VSWR 1.2

50Ω



MOUNTING HOLE :



Parts	Material	Plating(Micro-inch)
Ferrule	Brass	Gold 4 Over Nickel-Phosphorus Alloy 80 Over Copper 20
Hex Nut	Brass	Gold 4 Over Nickel-Phosphorus Alloy 80 Over Copper 20
Lock Washer	Brass	Gold 4 Over Nickel-Phosphorus Alloy 80 Over Copper 20
Contact Pin	Brass	Gold 4 Over Nickel-Phosphorus Alloy 80 Over Copper 20
Insulator	Teflon	
Body	Brass	Gold 4 Over Nickel-Phosphorus Alloy 80 Over Copper 20

Weight: 4.94 g

Suitable Cables: RG58, JBY195, LMR195

This part number complies with RoHS.

Notice: JYBAO reserves the right to make modifications deemed appropriate.

SMA9100L-0058

Interface

Per JYEBAO SMA Reverse Polarity derived from MIL-STD-348B

Electrical Data

Impedance	50Ω
Frequency range	DC to 6GHz
VSWR	≤ 1.2 (DC to 6GHz)
Insertion loss	$\leq 0.04 \times \sqrt{f(\text{GHz})}$ dB
Insulation resistance	$\geq 5000\text{M}\Omega$
Contact resistance inner conductor	$\leq 3\text{m}\Omega$
Contact resistance outer conductor	$\leq 2\text{m}\Omega$
Dielectric withstanding voltage (at sea level)	1000 V rms
Working voltage (at sea level)	335 V rms

Mechanical Data

Recommended coupling nut torque	4 inch lbs
Coupling proof torque	5.3 inch lbs
Contact Captivation-axial	≥ 6.1 lbs
Durability (mating)	≥ 100

Environmental Data

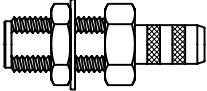
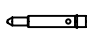
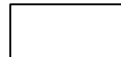
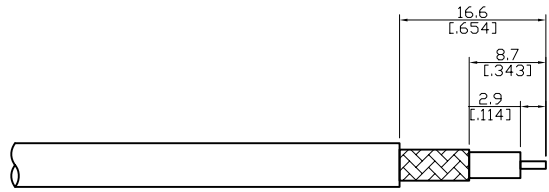
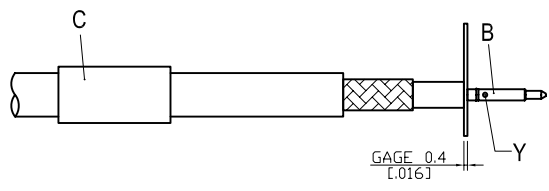
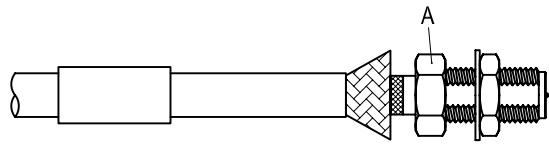
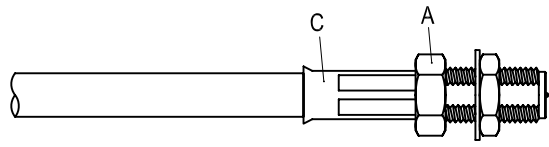
Temperature range	-65°C to +165°C
Thermal shock	MIL-STD-202, Method 107, Condition B
Moisture resistance	MIL-STD-202, Method 106
Corrosion	MIL-STD-202, Method 101, Condition B
RoHS	Compliant

Tooling

Crimping tool	CRT-1 or CRT-2
Crimp insert	INSERT-B

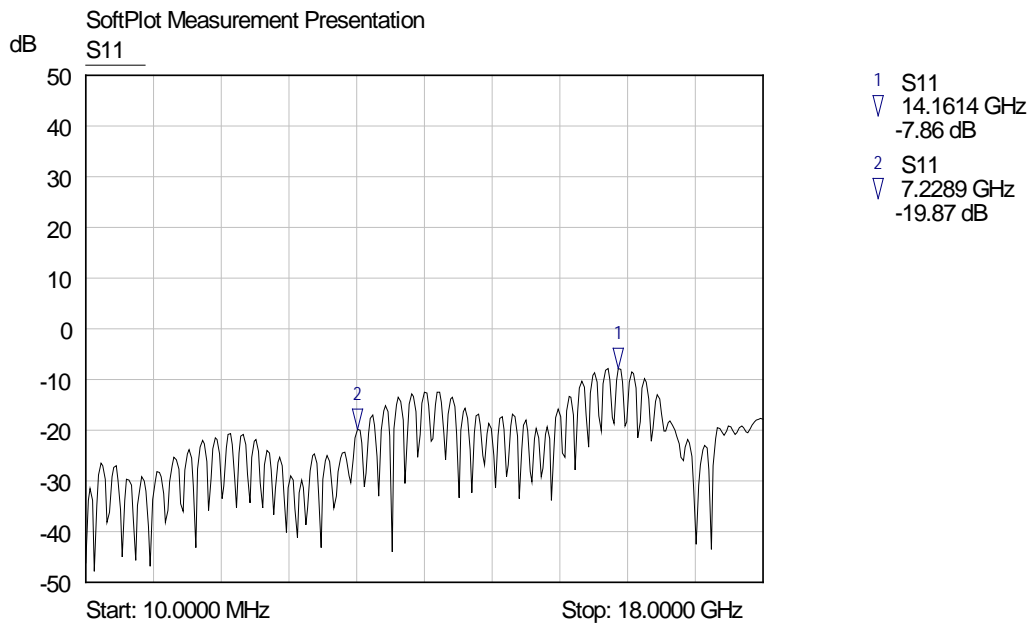
Notice: JYEBAO reserves the right to make modifications deemed appropriate.

CABLE ASSEMBLY INSTRUCTION

SMA9100L-0058	DATE	2017/11/01	REV	—
<p>A</p>  <p>BODY + HEX NUT + LOCK WASHER</p>	<p>B</p>  <p>CONTACT PIN</p>	<p>C</p>  <p>FERRULE</p>		
DIAGRAM	ASSEMBLY INSTRUCTION			
	<p>Step 1: STRIP AS SHOWN.</p>			
	<p>Step 2: SLIDE FERRULE " C " OVER CABLE. Step 3: PUT PIN " B " ON CENTER CONDUCTOR AND SOLDER OR CRIMP IN " Y ". USE 0.4MM GAGE ST-0.4 (USE SQUARE 0.98mm/0.039inch SECTION OF INSERT-B IF CRIMPED)</p>			
	<p>Step 4: LOOSEN BRAIDING AND SLIDE CONNECTOR " A " IN PLACE.</p>			
	<p>Step 5: SLIDE FERRULE " C " TOWARDS THE CONNECTOR " A " AND CRIMP. (USE 5.5mm/0.217inch HEX SECTION OF INSERT-B)</p>			
<p>This part number complies with RoHS. Notice: JYEBAO reserves the right to make modifications deemed appropriate.</p>				
APPROVED	CHECKED	DRAWING	<i>Albert</i>	

SMA9100L-0058

S11



勝特力電材超市-龍山店 886-3-5773766
勝特力電材超市-光復店 886-3-5729570
勝特力電子(上海) 86-21-34970699
勝特力電子(深圳) 86-755-83298787
<http://www.100y.com.tw>