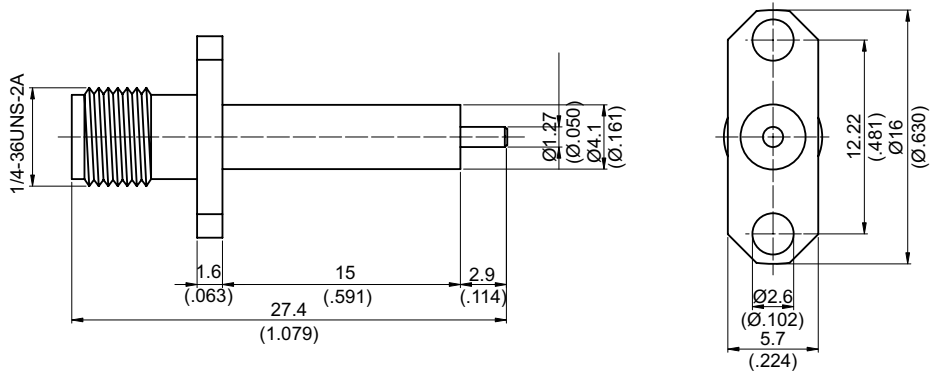


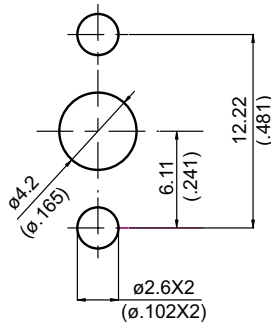
勝特力電材超市-龍山店 886-3-5773766
 勝特力電材超市-光復店 886-3-5729570
 勝特力電子(上海) 86-21-34970699
 勝特力電子(深圳) 86-755-83298787
<http://www.100y.com.tw>

SMA862L-0000

SMA Jack 2 Hole Flange With Round Contact 50Ω
(Φ1.27;L=2.9); PTFE L=15; 18GHz VSWR 1.2



MOUNTING HOLE :



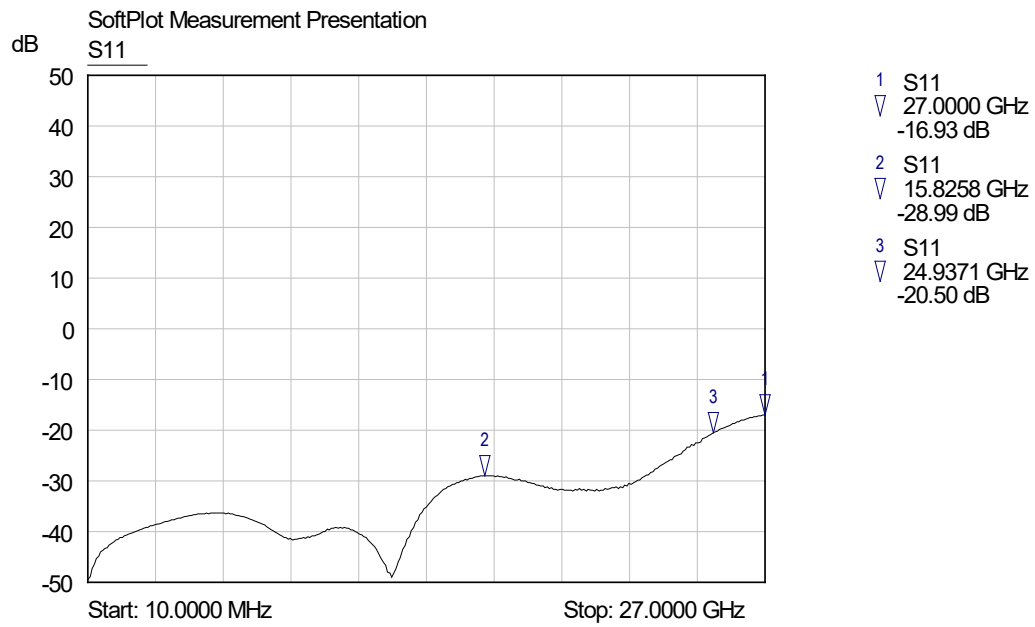
Parts	Material	Plating (Micro-inch)
Contact Pin	Beryllium Copper	Gold 4 Over Nickel-Phosphorus Alloy 80 Over Copper 20
Insulator	Teflon	
Body	Brass	Gold 4 Over Nickel-Phosphorus Alloy 80 Over Copper 20

Weight: 2.3 g

SMA	SMA862L-0000
<div data-bbox="172 387 571 432" style="border: 1px solid black; padding: 2px;">Interface</div> <p data-bbox="172 443 384 477">MIL-STD-348B</p> <p data-bbox="172 488 1007 521">Mechanically compatible with 2.92 & 3.5</p>	
<div data-bbox="172 555 571 600" style="border: 1px solid black; padding: 2px;">Electrical Data</div> <p data-bbox="172 611 927 645">Impedance 50Ω</p> <p data-bbox="172 656 1054 689">Frequency range DC to 18GHz</p> <p data-bbox="172 701 1166 734">VSWR ≤ 1.2 (DC to 18GHz)</p> <p data-bbox="172 745 1145 779">Insertion loss ≤ 0.04x√f(GHz) dB</p> <p data-bbox="172 790 1023 824">Insulation resistance ≥ 5000MΩ</p> <p data-bbox="172 835 967 869">Contact resistance inner conductor ≤ 3mΩ</p> <p data-bbox="172 880 967 913">Contact resistance outer conductor ≤ 2mΩ</p> <p data-bbox="172 925 1031 958">Dielectric withstanding voltage (at sea level) 1500 V rms</p> <p data-bbox="172 969 1015 1003">Working voltage (at sea level) 500 V rms</p>	
<div data-bbox="172 1093 571 1137" style="border: 1px solid black; padding: 2px;">Mechanical Data</div> <p data-bbox="172 1149 991 1182">Recommended coupling nut torque 4 inch lbs</p> <p data-bbox="172 1193 1018 1227">Coupling proof torque 5.3 inch lbs</p> <p data-bbox="172 1238 983 1272">Contact Captivation-axial ≥ 6.1 lbs</p> <p data-bbox="172 1283 943 1317">Durability (mating) ≥ 100</p>	
<div data-bbox="172 1406 571 1451" style="border: 1px solid black; padding: 2px;">Environmental Data</div> <p data-bbox="172 1462 1086 1496">Temperature range -65°C to +165°C</p> <p data-bbox="172 1507 1422 1541">Thermal shock MIL-STD-202, Method 107, Condition B</p> <p data-bbox="172 1552 1238 1585">Moisture resistance MIL-STD-202, Method 106</p> <p data-bbox="172 1597 1422 1630">Corrosion MIL-STD-202, Method 101, Condition B</p> <p data-bbox="172 1641 999 1675">RoHS Compliant</p>	
<div data-bbox="172 1753 571 1798" style="border: 1px solid black; padding: 2px;">Tooling</div>	

SMA862L-0000

S11



勝特力電材超市-龍山店 886-3-5773766
勝特力電材超市-光復店 886-3-5729570
勝特力電子(上海) 86-21-34970699
勝特力電子(深圳) 86-755-83298787
<http://www.100y.com.tw>