

RG316 鍍銀射頻連接線 SMB-KW/SMB-KW SMB 母轉 SMB 彎母

RG316-SMB-K/SMB-KW

RG316-SMB-KW/SMB-KW

0.1m

0.15m

0.2m

0.25m

0.3m

0.35m

0.4m

0.5m

0.6m

0.7m

0.8m

0.9m

1m

1.5m

2m

2.5m

3m

3.5m

4m

5m

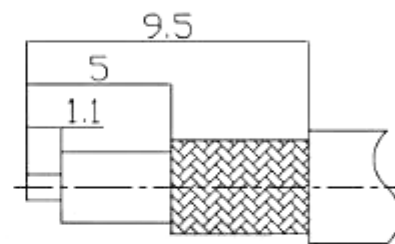
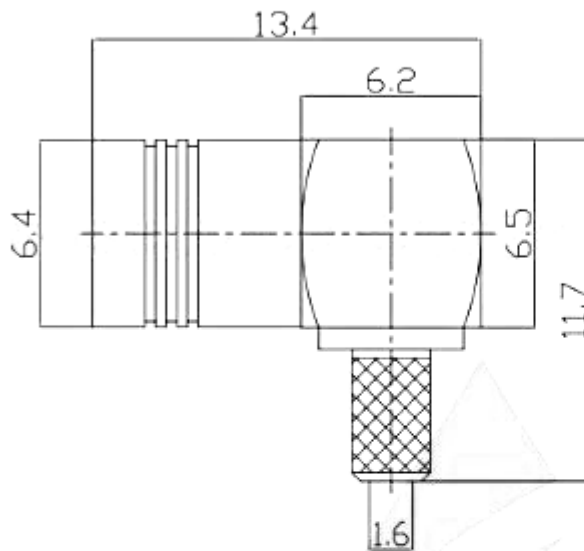


产品规格书

PRODUCT SPECIFICATION

产品型号Model: SMB-C-KW-1.5

适用电缆Applicable cables: RG316.RG174



推荐剥线尺寸

Recommended stripping size

注 Note: 尺寸 Dimensions (mm)

产品参数 Product parameters

1.电气 Electrical

1.1	阻抗 Impedance	50Ω
1.2	频率范围 Frequency range	DC-4GHz
1.3	驻波 VSWR	≤1.25
1.4	介质耐压 Dielectric withstanding voltage	750V rms
1.5	内导体接触电阻 Internal conductor contact resistance	≤6mΩ
1.6	外导体接触电阻 External conductor contact resistance	≤1mΩ
1.7	绝缘电阻 Insulation resistance	≥1000MΩ

2.环境与机械 Environment and Machinery

2.1	温度范围 Temperature range	-45°~+125°
2.2	耐久性 Durability	500cycles

3.材料和镀层 Material and Plating

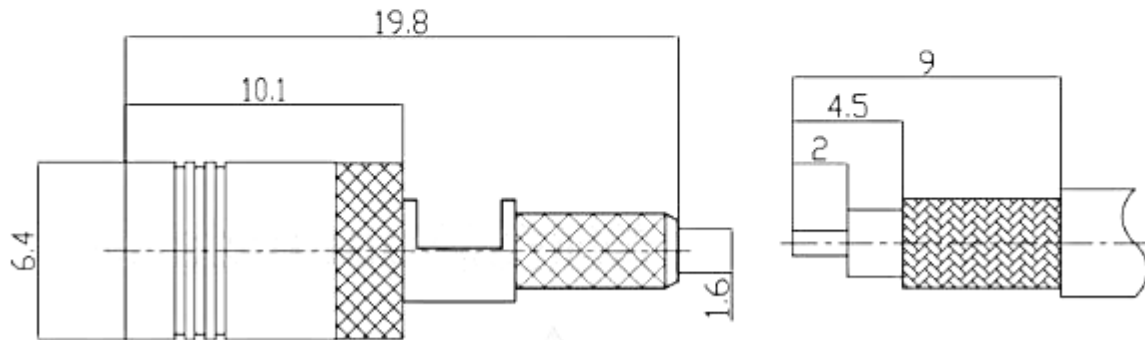
3.1	内导体 Inner conductor	铍铜镀金 Beryllium copper gold plating
3.2	外导体 Outer conductor	黄铜镀金 Brass gold plated
3.3	绝缘体 Insulator	聚四氟乙烯 PTFE

产品规格书

PRODUCT SPECIFICATION

产品型号Model: SMB-C-K-1.5-1

适用电缆Applicable cables: RG316.RG174



推荐剥线尺寸

Recommended stripping size

注 Note: 尺寸 Dimensions (mm)

产品参数 Product parameters

1.电气 Electrical

1.1	阻抗 Impedance	50Ω
1.2	频率范围 Frequency range	DC-4GHz
1.3	介质耐压 Dielectric withstanding voltage	750V rms
1.4	内导体接触电阻 Internal conductor contact resistance	≤6mΩ
1.5	外导体接触电阻 External conductor contact resistance	≤1mΩ
1.6	绝缘电阻 Insulation resistance	≥1000MΩ

2.环境与机械 Environment and Machinery

2.1	温度范围 Temperature range	-45°~+125°
2.2	耐久性 Durability	500cycles

3.材料和镀层 Material and Plating

3.1	内导体 Inner conductor	磷铜镀金 Phosphorus copper gold plating
3.2	外导体 Outer conductor	黄铜镀金 Brass gold plated
3.3	绝缘体 Insulator	聚四氟乙烯 PTFE

RG 316



型号 Model

FEP RG 316

描述 Description

(316) 高频同轴电缆 FEP(茶色)护套
(316) High Frequency coaxial cable with FEP (Brown) jacket

结构参数 Structure parameter

内部导体 Inner Conductor	镀银铜, 镀银铜包钢 Silver-Plated Copper, Silver-Plated Copper Clad Steel	7x0.175mm
绝缘层 Insulation Layer	聚四氟乙烯(PTFE) Polytetrafluoroethylene(PTFE)	1.53mm
外部导体 Outer Conductor	镀银铜线编织 Silver-Plated Copper Wire Braiding	1.95mm
护套 Jacket	聚全氟乙丙烯(FEP), 茶色 Fluorinated Ethylene Propylene(FEP), Brown	2.50mm

电气特性 Electrical Data

阻抗 Impedance, nominal	50ohms
电容 Capacitance, nominal	106pF/m
延时 Signal delay, nominal	4.7ns/m
耐电压 Voltage withstand(AC)	2000V rms/min
绝缘电阻 Insulation resistance, nominal	1500 M Ω · km
传输速率 Velocity of propagation, nominal	70%

机械特性 Mechanical Data

恒定温度 Temperature rating	150°C
最小弯曲半径 Minimum bending radius	15mm
最大拉伸强度 Maximum tensile strength	3.4kg
重量 Weight of cable	17g/m

衰减量和功率 Attenuation and Power

频率数 Frequency(MHz)	衰减量 Attenuation(dB/m)	功率 Power(Watts CW)
100	0.29	420
400	0.58	210
900	0.88	140
1000	0.93	135
1800	1.27	100
2400	1.46	78
3000	1.65	72
5000	2.14	61
6000	2.34	52