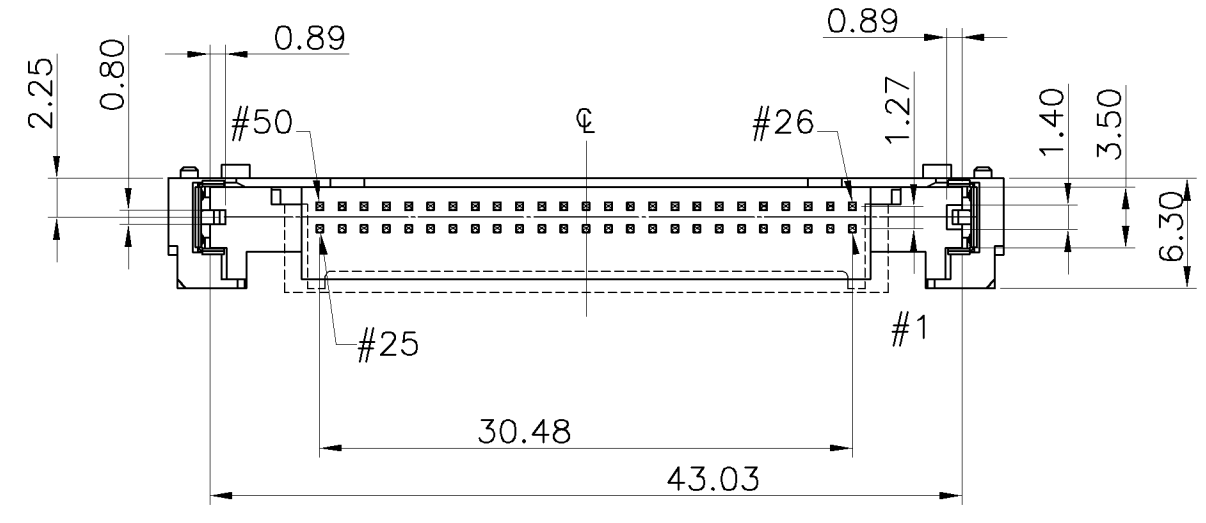
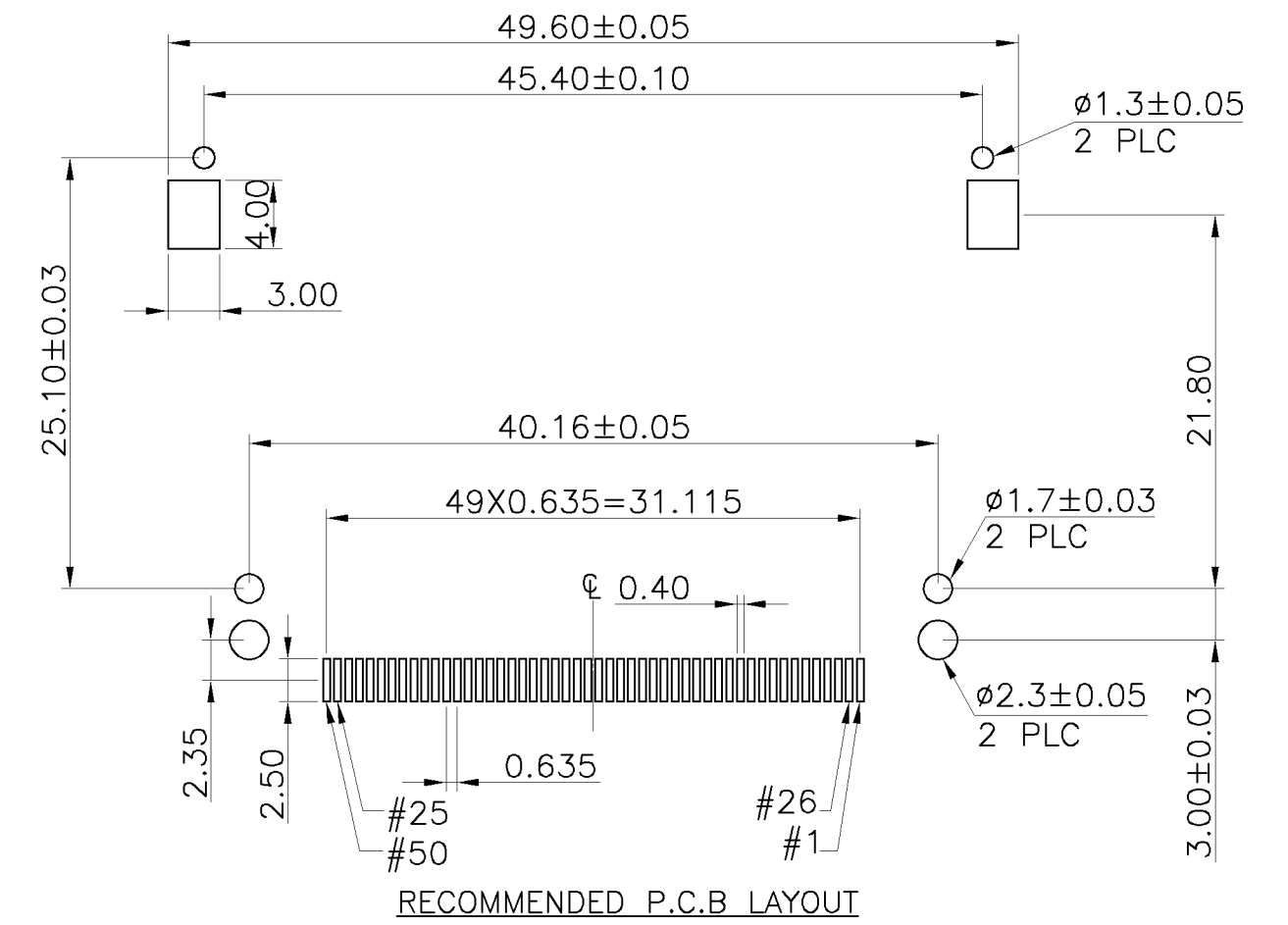


THIS DRAWING IS UNPUBLISHED. RELEASED FOR PUBLICATION  
 © COPYRIGHT BY TYCO ELECTRONICS CORPORATION. ALL RIGHTS RESERVED.

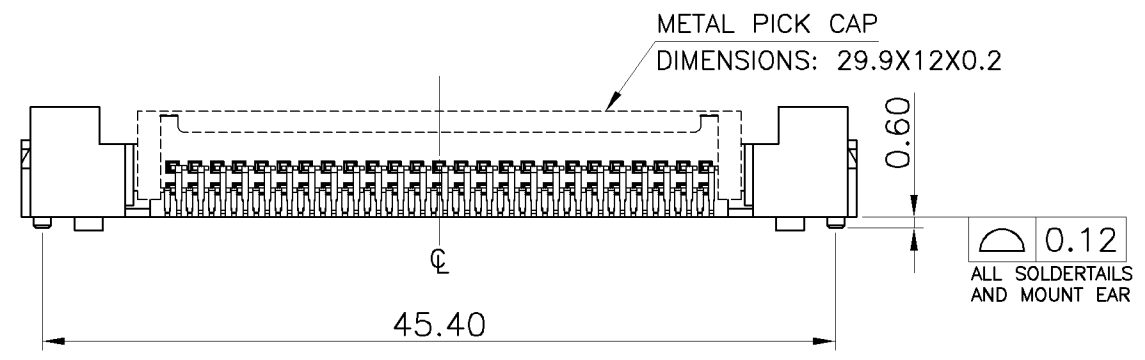
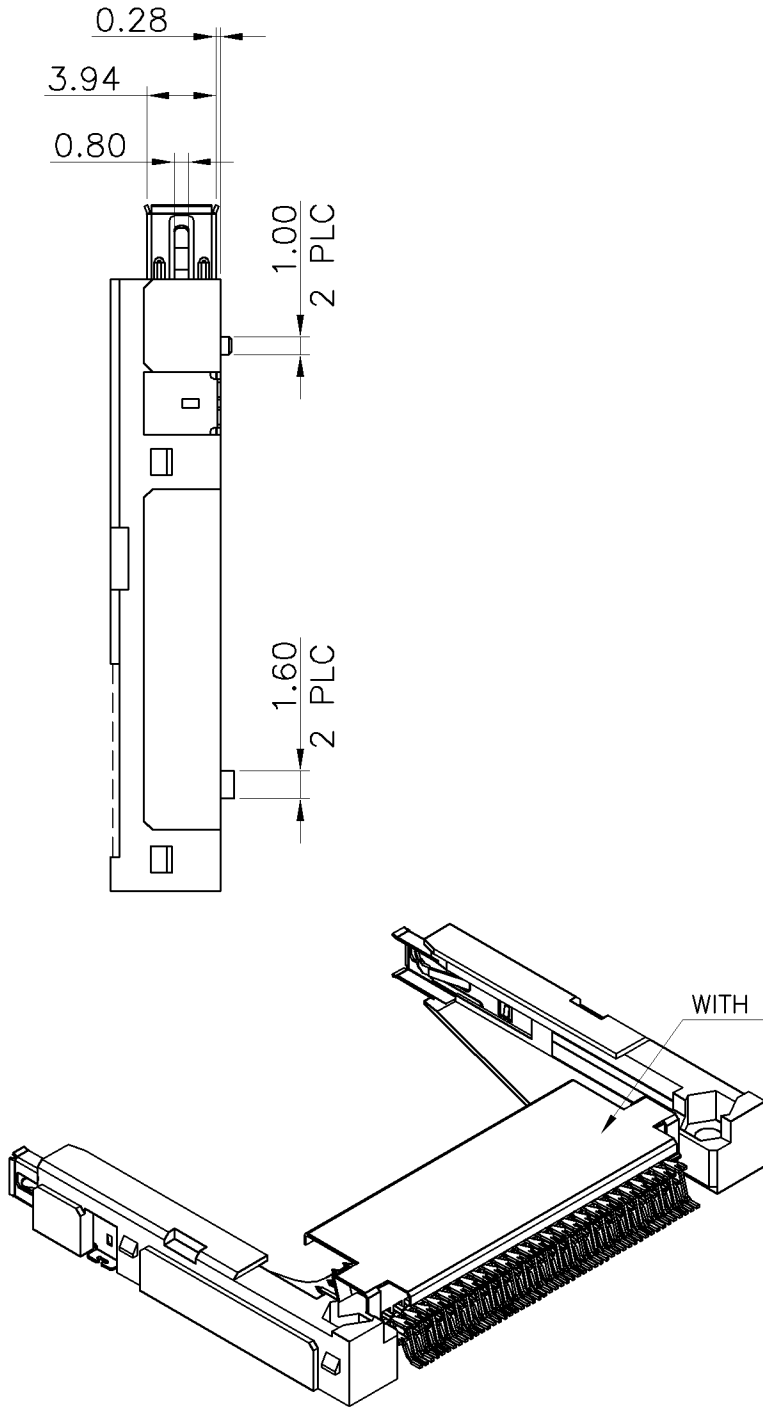
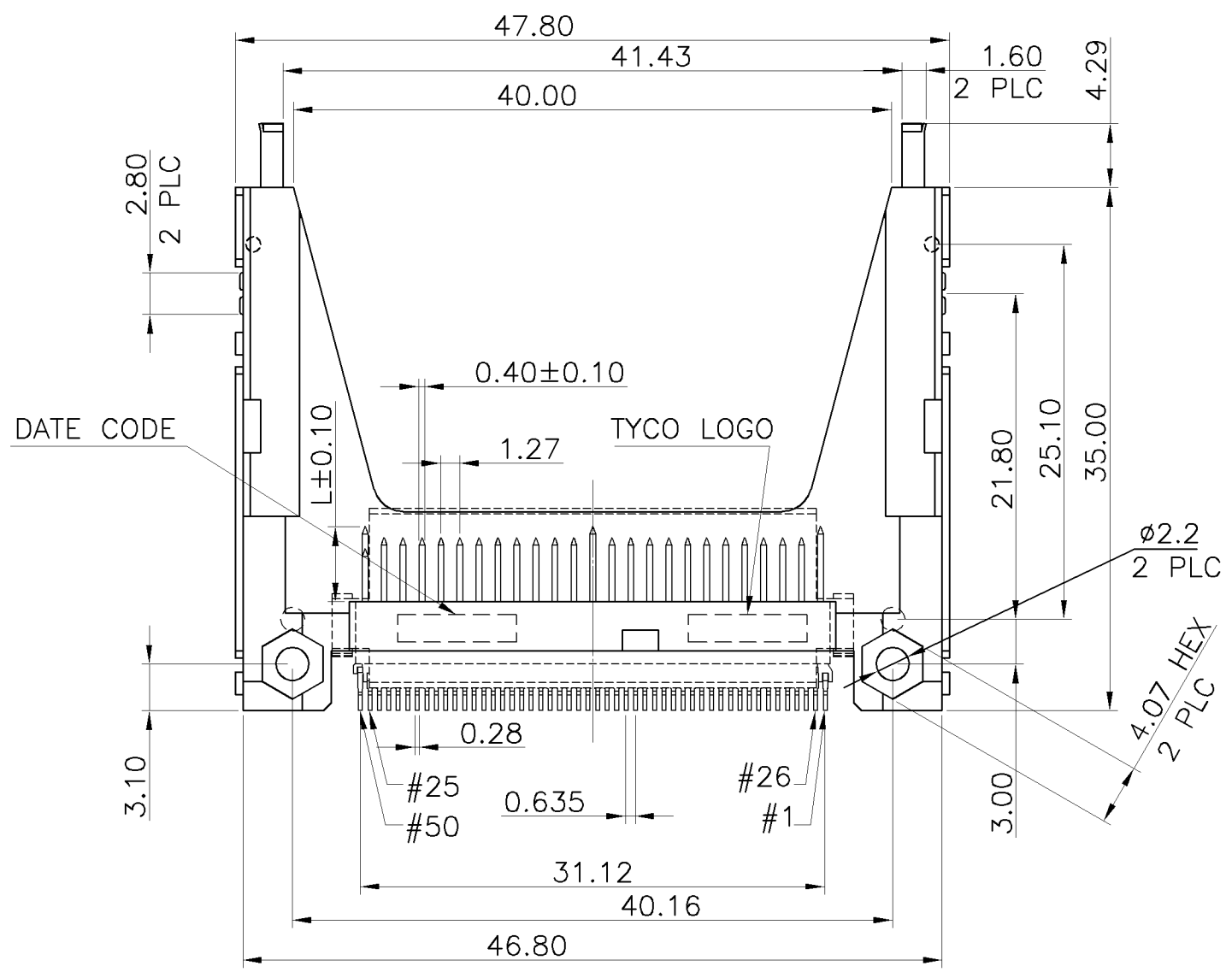
| LOC | DIST | REVISIONS |     |  |         |     |      |
|-----|------|-----------|-----|--|---------|-----|------|
| DW  | —    | P         | LTR | DESCRIPTION                              | DATE    | DWN | APVD |
|     |      | B         |     | ECR-07-010411, CHANGE TERMINAL'S PROFILE | 04MAY07 | OH  | WK   |



|          |                  |
|----------|------------------|
| POWER    | 5.00mm           |
| GENERAL  | 4.25mm           |
| DETECT   | 3.50mm           |
| PIN TYPE | INTERFACE DIM. L |



- NOTE:
- MATERIAL:  
 HOUSING: LCP WITH 30% GF, UL 94V-0, WHITE COLOR.  
 CONTACTS: BRASS.  
 MOUNT EAR: BRASS.  
 GROUNDING: PHOSPHOR BRONZE.  
 PICKCAP: STEEL.
  - FINISH:  
 CONTACTS: 0.381µm [15µ"] GOLD PLATED ON CONTACT AREA,  
 2.54µm [100µ"] MIN. MATTE-TIN ON SOLDER TAIL, WITH  
 ENTIRE CONTACT UNDERPLATED 1.27µm [50µ"] MIN. NICKEL.  
 MOUNT EAR: 2.54µm [100µ"] MIN. TIN PLATED ON SOLDER AREA  
 1.27µm [50µ"] MIN. NIKEL UNDERPLATED ALL OVER.  
 GROUNDING: 2.03µm [80µ"] MIN. NIKEL UNDERPLATED ALL OVER.
  - REFLOW SOLDER CAPABLE TO 260°C PER TYCO TEST SPEC.  
 109-201, CONDITION B.



|          |             |             |
|----------|-------------|-------------|
| W/       | TAPE & REEL | 1-1734448-2 |
|          | TRAY        | 1734448-2   |
| W/O      | TAPE & REEL | 1-1734448-1 |
|          | TRAY        | 1734448-1   |
| PICK CAP | PACKAGING   | PART NUMBER |

|  |  |                                     |  |                 |
|--|--|-------------------------------------|--|-----------------|
| THIS DRAWING IS A CONTROLLED DOCUMENT. |  | DWN O. HU 03MAY2007                 | Tyco Electronics Corporation<br>Taipei, Taiwan |                 |
| DIMENSIONS: MM                         |  | CHK S. HOU 03MAY2007                |  |                 |
| TOLERANCES UNLESS OTHERWISE SPECIFIED: |  | APVD W.J. KE 03MAY2007              | NAME   |                 |
| 0 PLC ± 0.5                            |  | PRODUCT SPEC 108-57134              |  |                 |
| 1 PLC ± 0.3                            |  | QUALIFICATION TEST REPORT 501-57118 |  |                 |
| 2 PLC ± 0.2                            |  | SIZE A3                             |  | CAGE CODE 00779 |
| 3 PLC ± -                              |  | DRAWING NO C=1734448                |  | RESTRICTED TO - |
| 4 PLC ± -                              |  | WEIGHT 4.145 GRAMS                  |  | SCALE -         |
| ANGLES ± -                             |  | CUSTOMER DRAWING                    |  | SHEET 1 OF 3    |
| FINISH SEE NOTE                        |  | REV B                               |  |                 |