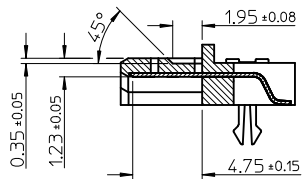
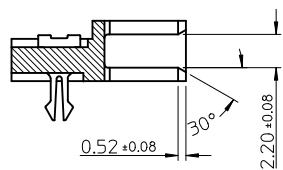


P/N	CONTACT AREA PLATING	PACKAGE METHOD	REMARK
67490-1220	GOLD FLASH	WITHOUT MYLAR	PURE TIN
67490-1221	0.76 MICRONS GOLD PLATED	TRAY PACKAGE	
67490-1225	0.38 MICRONS GOLD PLATED	PK-67490-001	
67490-1230	GOLD FLASH	WITH MYLAR, TAPE REEL	
67490-1235	0.38 MICRONS GOLD PLATED	PK-67490-000	
67490-1240	GOLD FLASH	WITH MYLAR, TUBE PACKAGE	
67490-1245	0.38 MICRONS GOLD PLATED	PK-67490-002	

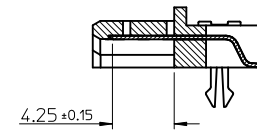
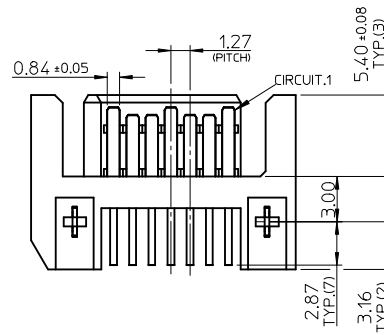
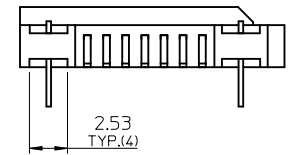
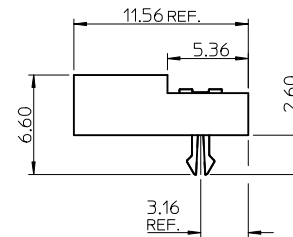
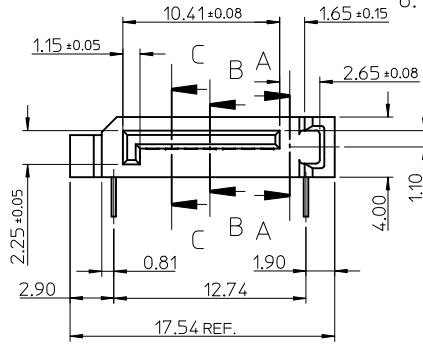
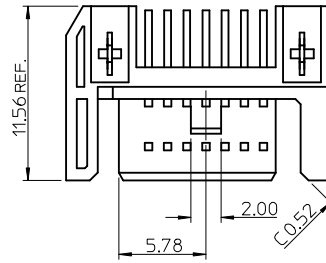
勝特力材料 886-3-5773766
勝特力电子(上海) 86-21-34970699
勝特力电子(深圳) 86-755-83298787
[Http://www.100y.com.tw](http://www.100y.com.tw)



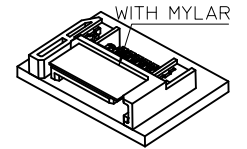
SECTION B-B
SCALE 3:1



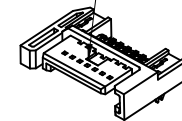
SECTION A-A
SCALE 3:1



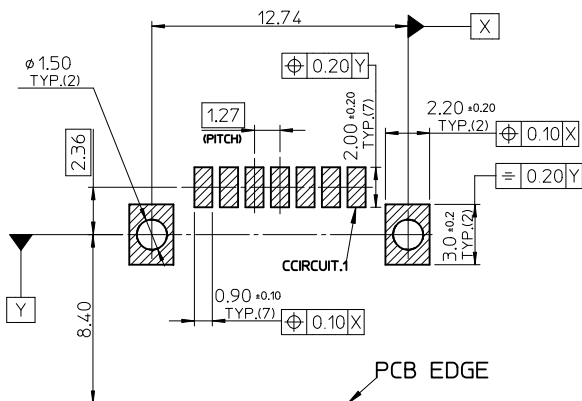
SECTION C-C
SCALE 3:1



WITH MYLAR



WITHOUT MYLAR



RECOMMEND P.C.B. LAYOUT (t=1.6)

NOTES:

- MATERIAL:
HOUSING: HIGH TEMPERATURE THERMAL PLASTIC
GLASS FILLED, UL94V-0, COLOR: BLACK
TERMINAL/FORKLOCK: COPPER ALLOY
MYLAR: ADHENSIVE MYLAR 4.5MM X 15.5MM
- TERMINAL PLATING:
CONTACT AREA: GOLD PLATED
SOLDERING TAIL: 1.27 MICRONS MINIMUM TIN PLATED
UNDER PLATE: NICKEL 1.27 MICRONS MINIMUM NICKEL PLATED
- FORKLOCK PLATING:
1.27 MICRONS MINIMUM TIN PLATED OVERALL 1.27 MICRONS MINIMUM NICKEL UNDER-PLATED
- PACKAGING SPECIFICATION REFER TO TABLE
- PRODUCT SPECIFICATION REFER TO PS-67490-001
- MATING PART: 67538, 67489

REMOVE PART NUMBER	DESCRIPTION	QUALITY SYMBOLS		GENERAL TOLERANCES (UNLESS SPECIFIED)		DIMENSION STYLE		SCALE	DESIGN UNITS	THIRD ANGLE PROJECTION	
		mm	INCH	mm	INCH	MM ONLY	4:1	METRIC	⊙ □		
EC NO: SH2012-0062	DRWN:XQZHANG 2012/01/18	▽ _A =0	▽ _B =0	4 PLACES	± ---	± ---	DRAWN BY	DATE	TITLE	SATA SYSTEM PLUG R/A STANDARD TYPE	
DRWN:XQZHANG 2012/01/30	CHKD:XQZHANG 2012/01/30	▽ _C =0	▽ _D =0	3 PLACES	± ---	± ---	CHECKED BY	DATE			
APPR:AYIN 2012/02/02		▽ _E =0		2 PLACES	± 0.15	± ---	APPROVED BY	DATE		MOLEX INCORPORATED	
				1 PLACE	± 0.25	± ---	ERICK	'01/08/08			
		ANGULAR ± 3 °		DRAFT WHERE APPLICABLE MUST REMAIN WITHIN DIMENSIONS		SEE TABLE		SD-67490-002		1 OF 1	
						MATERIAL NO.		DOCUMENT NO.		SHEET NO.	
						SIZE		THIS DRAWING CONTAINS INFORMATION THAT IS PROPRIETARY TO MOLEX INCORPORATED AND SHOULD NOT BE USED WITHOUT WRITTEN PERMISSION			