



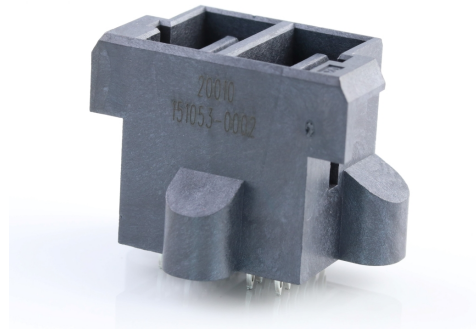
产品编号 : [1510530002](#)

Product Description : 11.00mm Pitch  
EXTreme Guardian Power Vertical Plug PCB  
Header, 2.30mm PCB Thickness, Gold (Au)  
Plating, 2 Circuits

系列号 : 151053

状态 : Active

Product Category : PCB Headers and  
Receptacles



---

## 文件和资源

### 图纸

[图纸 1510530002\\_sd.pdf](#)

[包装设计图 PK-151053-0001-001.pdf](#)

### 3D 模型和设计文件

[3D模型 1510530002\\_stp.zip](#)

[符号足迹数据 SYM-151053-0002-001.zip](#)

### 规格


[应用规格 1510350000-AS-000.pdf](#)

[产品规格 PS-151053-0000-001.pdf](#)

---

## 产物环境合规

### 合规

GADSL/IMDS	Not Relevant
China RoHS	
EU ELV	Not Relevant
Low-Halogen Status	Low-Halogen per IEC 61249-2-21
REACH SVHC	Not Contained per D(2023)3788-DC (14 Jun 2023)
EU RoHS	Compliant per EU 2015/863

### 多部分产品合规性声明

- Eu RoHS

- REACH SVHC

- Low-Halogen

## 多部分行业合规性文件

- IPC 1752A Class C
- IPC 1752A Class D
- Molex Product Compliance Declaration
- IEC-62474
- chemSHERPA (xml)

## 欧盟 RoHS 合格证书

---

### 产品详情

#### 常规

状态	活动
类别	PCB Headers and Receptacles
系列	151053
说明	11.00mm Pitch EXTreme Guardian Power Vertical Plug PCB Header, 2.30mm PCB Thickness, Gold (Au) Plating, 2 Circuits
应用	Power, Wire-to-Board
元件类型	PCB Header
产品系列	EXTreme Guardian System
产品名称	EXTreme Guardian
UPC	889056731997

#### 电气

每触点最大电流	80.0A
电压 - 最大	600V AC/DC

#### 物理

断开	否
回路数 (已载入)	2
电路数 (最多)	2
颜色-树脂	黑色
耐用性(插拔次数) - 最多次数	25
先接后断	否
符合灼热丝规范	否
锁定插接部位	是
材料 - 金属	Copper Alloy

材料 - 接合部位电镀	金牌
材料 - 终端电镀	Tin
材料 - 树脂	Liquid Crystal Polymer
净重	13.974/g
行数	1
方向	垂直
包装形式	Tray
PC 焊脚长度	2.83mm
PCB 定位器	否
推荐的 PCB 厚度	2.30mm
间距 - 插配接口	11.00mm
最薄镀层 - 接合部位	0.762µm
最薄镀层 - 端接	2.540µm
有极性的插配件	是
PCB 极性	否
运行温度范围	-40° to +105° C
终端界面类型	Through Hole - Compliant Pin

## 进程

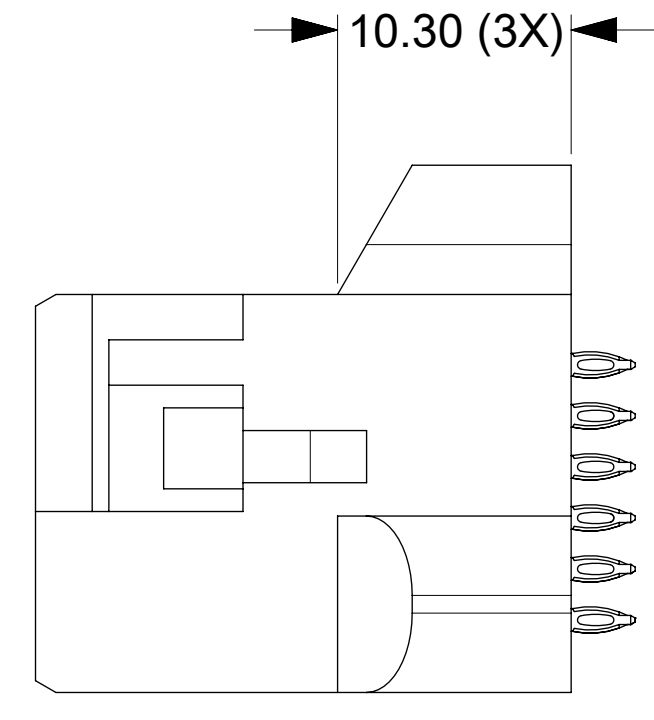
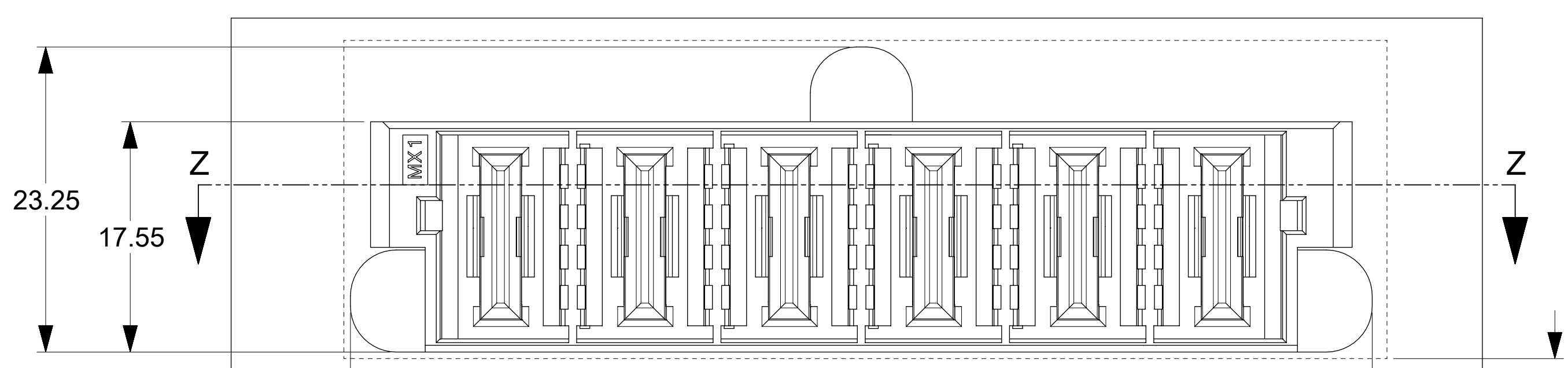
无铅	不适用
----	-----

---

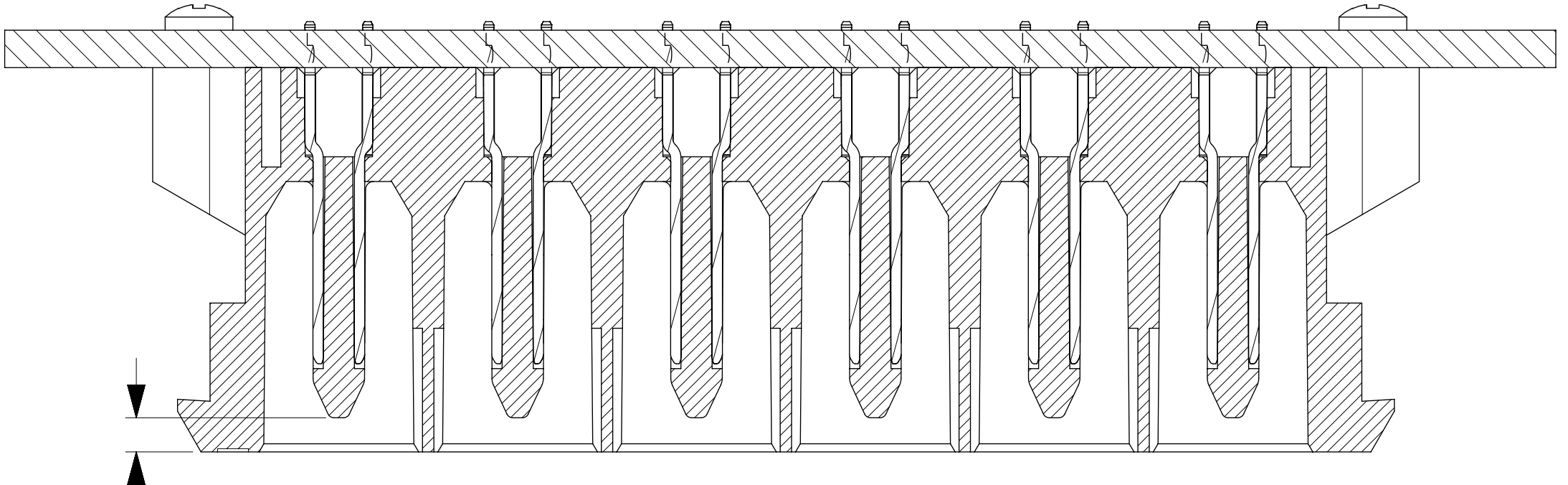
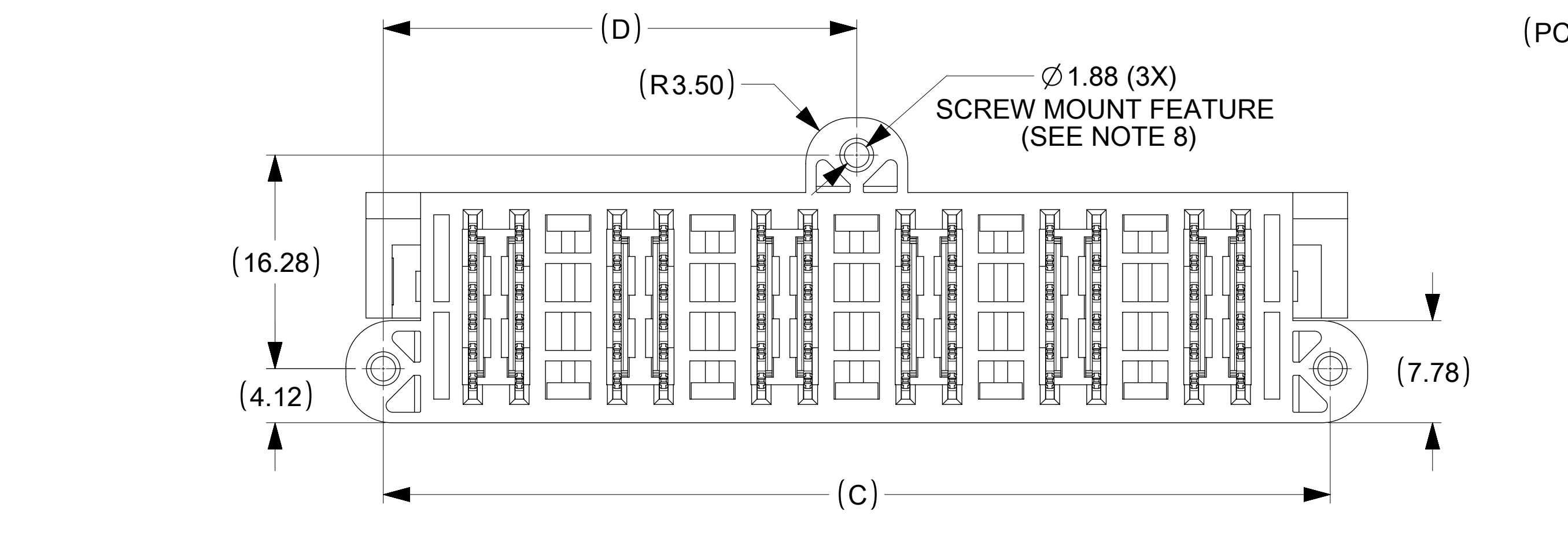
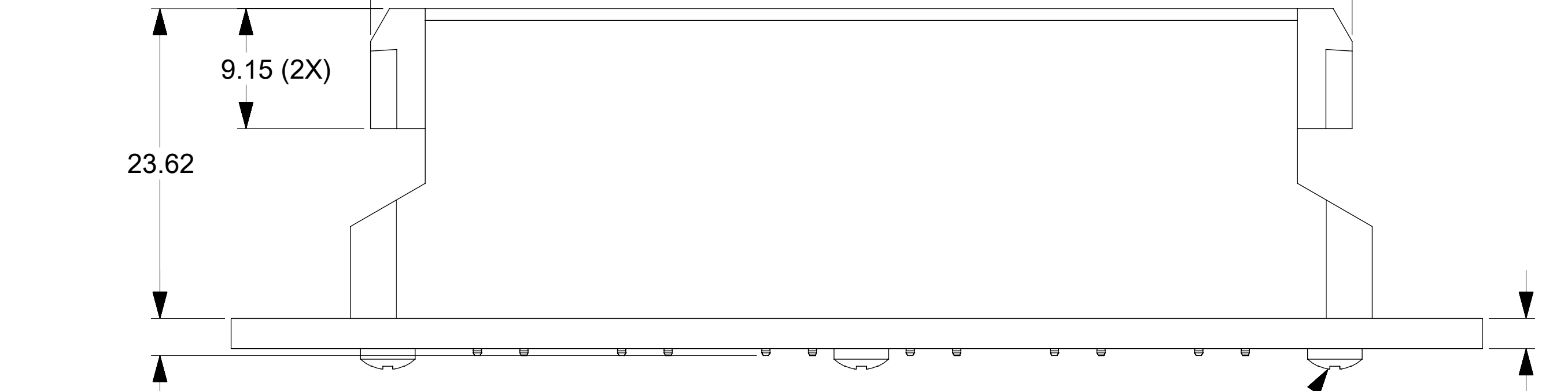
## 可配插/可连接使用的产品

### 可配插部件

描述	产品编号
11.00mm Pitch EXTreme Guardian Power Receptacle Assembly, 6 AWG, PBT, 2 Circuits	<u>1510340012</u>



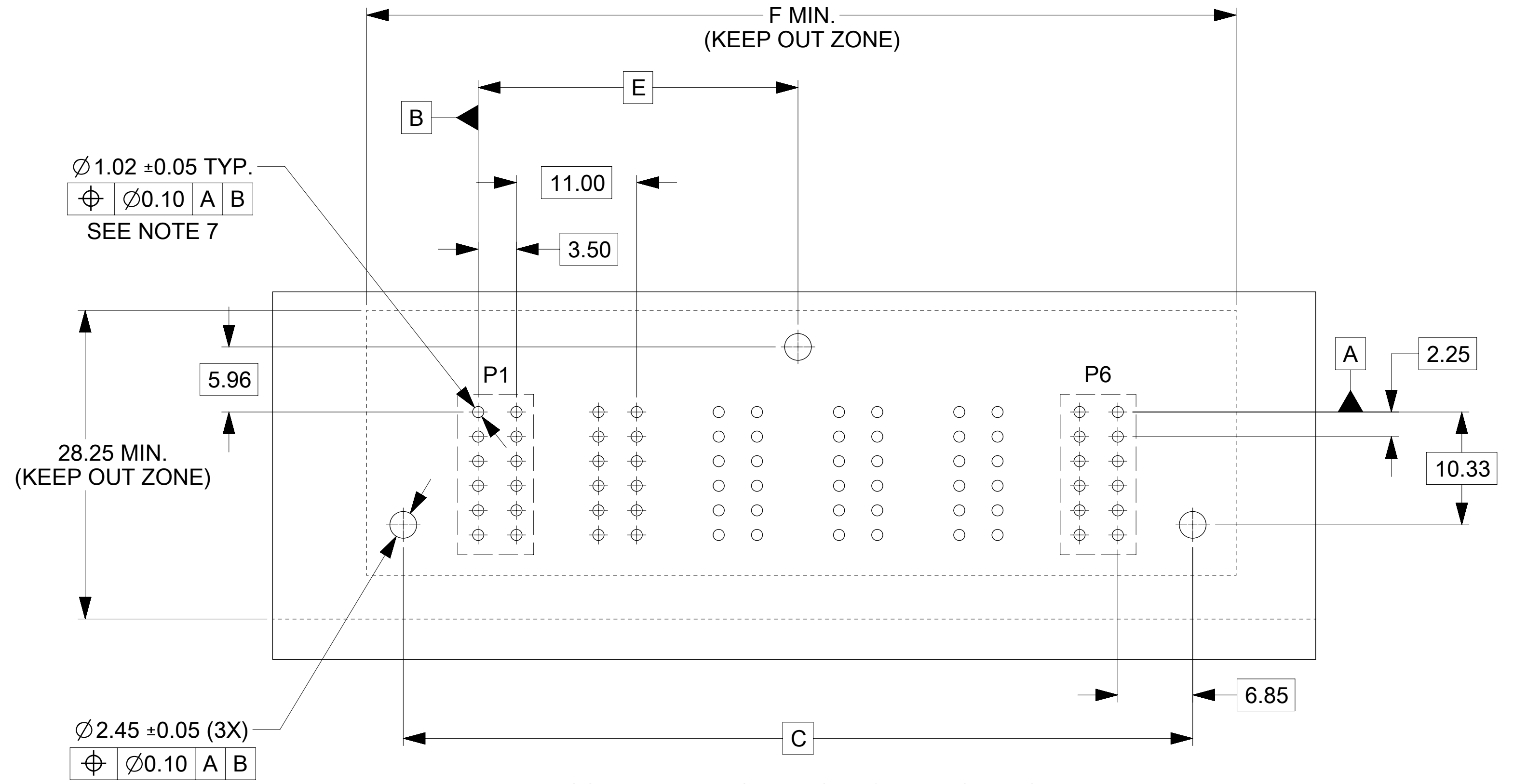
ALLOW 4.00 EXTRA PER SIDE FOR RE-WORK



SECTION Z-Z

NOTES:

- MATERIAL:  
HOUSING: LCP, UL94V-0, COLOR: BLACK  
TERMINALS: COPPER ALLOY
- FINISHES: TERMINALS : 30µIN MIN. GOLD ON CONTACT  
100µIN MIN. TIN ON TAIL  
50µIN MIN. NICKEL UNDERPLATE OVERALL.
- PRODUCT SPECIFICATION: PS-151053-0000
- PACKAGING SPECIFICATION: PK-151053-0001
- MATING WITH CRIMP: 46819, CRIMP RECEPTACLE HOUSING: 151034
- TAIL DESIGN : COMPLIANT PIN
- PLATED THRU HOLE SIZE, REFER TO PS-151053-0000
- RECOMMENDED SCREW: 2-32 TYPE AB X 0.300".  
SCREWS ARE NOT INCLUDED
- USE FLAT ROCK APPLICATION TOOLING.
- POWER CONTACTS ARE LUBRICATED.



RECOMMENDED PCB LAYOUT & KEEP OUT ZONE

SYMBOLS	THIS DRAWING CONTAINS INFORMATION THAT IS PROPRIETARY TO MOLEX ELECTRONIC TECHNOLOGIES, LLC AND SHOULD NOT BE USED WITHOUT WRITTEN PERMISSION		CURRENT REV DESC: UPDATED NOTE				
	DIMENSION UNITS	SCALE	DESCRIPTION				
▽ = 0	mm	NTS			<b>GUARDIAN</b> 2 - 6CKT VERTICAL HEADER POWER CONNECTOR		
▽ = 0	GENERAL TOLERANCES (UNLESS SPECIFIED)						
▽ = 0		MM	INCH	EC NO: 729257		PRODUCT CUSTOMER DRAWING DOCUMENT NUMBER: <b>SD-151053-0001</b>   DOC TYPE: PSD   DOC PART: 001   REVISION: B2	
▽ = 0	4 PLACES	±	±	DRWN: ABHIRK 2022/11/15			
▽ = 0	3 PLACES	±	±	CHK'D: SUVARS 2022/11/21			
▽ = 0	2 PLACES	±	0.25	APPR: HTHYAGARAJ 2022/12/05			
▽ = 0	1 PLACE	±	0.25	INITIAL REVISION:			
▽ = 0	0 PLACES	±	±	DRWN: CGOH 2015/01/22			
▽ = 0	ANGULAR TOL		± 3.0°	APPR: KHLIM 2015/08/14			
▽ = 0	DRAFT WHERE APPLICABLE MUST REMAIN WITHIN DIMENSIONS		THIRD ANGLE PROJECTION	DRAWING	SERIES	MATERIAL NUMBER	
▽ = 0				D-SIZE	151053	SEE TABLE	
DOCUMENT STATUS		P1	RELEASE DATE	2022/12/05	08:25:42	CUSTOMER	SHEET NUMBER
						GENERAL MARKET	1 OF 1

PART NO.	CKT	DIM. A	DIM. B	DIM. C	DIM. D	DIM. E	DIM. F
1510530002	2	33.90	30.84	28.20	14.10	7.25	34.90
1510530003	3	44.90	41.84	39.20	19.60	12.75	45.90
1510530004	4	55.90	52.84	50.20	25.10	18.25	56.90
1510530005	5	66.90	63.84	61.20	30.60	23.75	67.90
1510530006	6	77.90	74.84	72.20	36.10	29.25	78.90