



产品编号：[190690230](#)

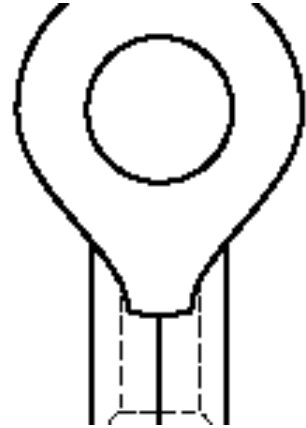
Product Description：Krimptite Ring
Tongue Terminal for 10-12 AWG Wire, Stud
Size 6 (M3.5), Length 18.82mm

系列号：19069

状态：Active

Product Category：Ring and Spade
Terminals

工程编号：C-136-06



文件和资源

图纸

[图纸 190690230_sd.pdf](#)

3D 模型和设计文件

[3D模型 190690230_stp.zip](#)

规格

[产品规格 PS-19902-011-001.pdf](#)

[产品规格 PS-19902-013-001.pdf](#)

产物环境合规

合规

GADSL/IMDS	Not Relevant
China RoHS	
EU ELV	Not saleable
Low-Halogen Status	Low-Halogen per IEC 61249-2-21
REACH SVHC	Not Contained per D(2023)3788-DC (14 Jun 2023)
EU RoHS	Compliant per EU 2015/863

[多部分产品合规性声明](#)

- Eu RoHS
- REACH SVHC
- Low-Halogen

[多部分行业合规性文件](#)

- IPC 1752A Class C
- IPC 1752A Class D
- Molex Product Compliance Declaration
- IEC-62474
- chemSHERPA (xml)

欧盟 RoHS 合格证书

产品详情

常规

状态	活动
类别	Ring and Spade Terminals
系列	19069
说明	Krimptite Ring Tongue Terminal for 10-12 AWG Wire, Stud Size 6 (M3.5), Length 18.82mm
关键字	Ring Terminal, Ring Terminals
产品系列	Solderless Terminals
产品名称	Krimptite
类型	Ring
UPC	800755067415

机构

CSA	LR18689
UL	E32244

物理

筒型	已关闭
绝缘	无
材料 - 接合部位电镀	Tin
材料 - 终端电镀	Tin
净重	1.379/g
包装形式	Bag
最薄镀层 - 接合部位	2.540µm
最薄镀层 - 端接	2.540µm
螺柱规格	6 (M3.5)
终端界面类型	Crimp or Compression

线径规格 (AWG)	10, 12
线缆尺寸mm ²	4.00-6.00

进程

无铅	不适用
----	-----

施工工具

全局

描述	产品编号
PremiumGrade Hand Crimp Tool for Krimptite/Versakrimp Terminals and Splices, 10-22 AWG and 6.0mm ² - 0.5mm ²	<u>0640030100</u>
Crimp Head for the AT-200 Pneumatic Hand Tool	<u>0640070100</u>
ServiceGrade Hand Crimp Tool - Ratchet	<u>0640160038</u>



PRODUCT SPECIFICATION

COSMETIC SPECIFICATION

1.0 SCOPE

This applies to all TBO products.

2.0 PURPOSE

To define acceptability criteria for cosmetic issues

3.0 REFERENCE MATERIAL NUMBERS

This applies to all TBO products.

4.0 DEFINITIONS

Not applicable.

5.0 PROCEDURES

Color:

The use of color in the plastic component of connectors is for product identification only and not for aesthetic purposes. Lot-to-lot shade variations are acceptable and do not affect the form, fit, or function of the connectors. The specification only specifies the color, not the shade of the color. Color is considered a reference specification with no additional specific requirements.

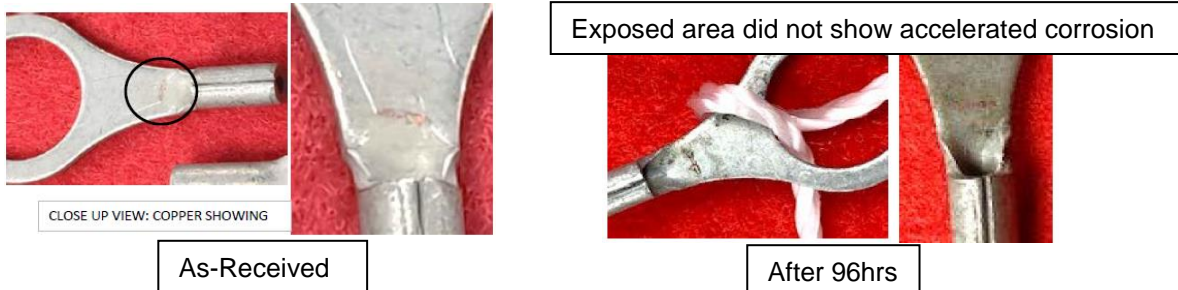
Plating Appearance:

Matte tin: Matte tin has a dull, non-reflective surface that varies in color from ash-white to mid-gray. Lot-to-lot shade variations are acceptable and do not affect the form, fit, or function of the connectors.

Matte tin is inherently soft and susceptible to handling damage that can cause superficial blemishes which are easily seen by the naked eye due to non-reflective surface. Superficial blemishes do not affect the form, fit, or function of the connectors.

Exposed copper up to 3% of the entire part is to be considered acceptable and does not affect the form, fit, or function of the connector.

- Example shown below for PN: B-118-38 Accelerated Salt-Spray Test (5% Mixture).



REVISION: A1	ECR/ECN INFORMATION: EC No: 635275 DATE: 2020 / 4 / 2	TITLE: COSMETIC SPECIFICATION TBO PRODUCTS	SHEET No. 1 of 1
DOCUMENT NUMBER: PS-19902-011	CREATED / REVISED BY: ETHRODAHL/ DMYRICK	CHECKED BY: JHACKNEY	APPROVED BY: JMACNEIL