



产品编号：[346750003](#)

Product Description：MX150 Cable-Sealed Male Connector Assembly with TPA, Single Row, 2 Circuits, Keying Option C, with Clipslot, Black

系列号：34675

状态：Active

Product Category：Connector Housings



文件和资源

图纸

[图纸 346750003\\_sd.pdf](#)

[包装设计图 PK-31300-635-001.pdf](#)

3D 模型和设计文件

[3D模型 346750003\\_stp.zip](#)

规格

[应用规格 340620000-AS-CH-000.pdf](#)

[应用规格 AS-34062-000-001.pdf](#)

[产品规格 PS-34062-000-001.pdf](#)

[测试摘要 TS-34062-992-001.pdf](#)

产物环境合规

合规

GADSL/IMDS	Compliant
China RoHS	
EU ELV	Compliant per 2000/53/EC
Low-Halogen Status	Low-Halogen per IEC 61249-2-21
REACH SVHC	Not Contained per D(2023)3788-DC (14 Jun 2023)
EU RoHS	Compliant per EU 2015/863

[多部分产品合规性声明](#)

- Eu RoHS
- REACH SVHC
- Low-Halogen

多部分行业合规性文件

- IPC 1752A Class C
- IPC 1752A Class D
- Molex Product Compliance Declaration
- IEC-62474
- chemSHERPA (xml)

欧盟 RoHS 合格证书

产品详情

常规

状态	活动
类别	Connector Housings
系列	34675
说明	MX150 Cable-Sealed Male Connector Assembly with TPA, Single Row, 2 Circuits, Keying Option C, with Clipslot, Black
应用	Power, Wire-to-Board, Wire-to-Wire
个评论	with clip slot
产品系列	MX150 Sealed and Unsealed Connector System
产品名称	MX150
UPC	883906097783

物理

电路数（最多）	2
颜色-树脂	黑色
性别	Plug
符合灼热丝规范	否
插接极性	是
锁定插接部位	是
材料 - 树脂	Nylon
净重	4. 337/g
行数	1
包装形式	Bag
面板安装式	否

间距 - 插配接口	5.00mm
间距 - 终端界面	5.00mm
有极性的插配件	是
可堆叠的	否
运行温度范围	-40° to +120° C

进程

无铅	不适用
----	-----

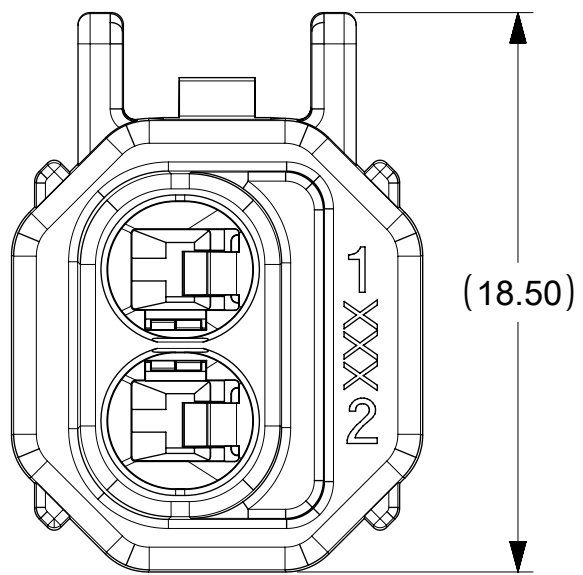
可配插/可连接使用的产品

可配插部件

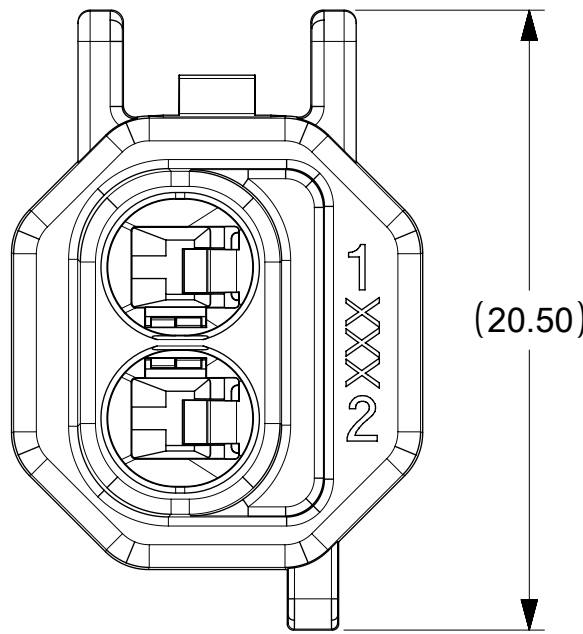
描述	产品编号
MX150 Cable-Sealed Single Row Female Connector Assemblies	<u>34062</u>

可连接使用部件

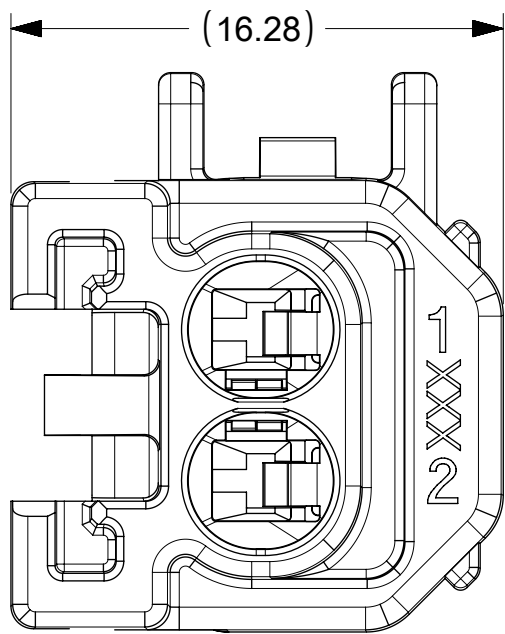
描述	产品编号
MX150 Cable Seal Male Terminals	<u>34080</u>



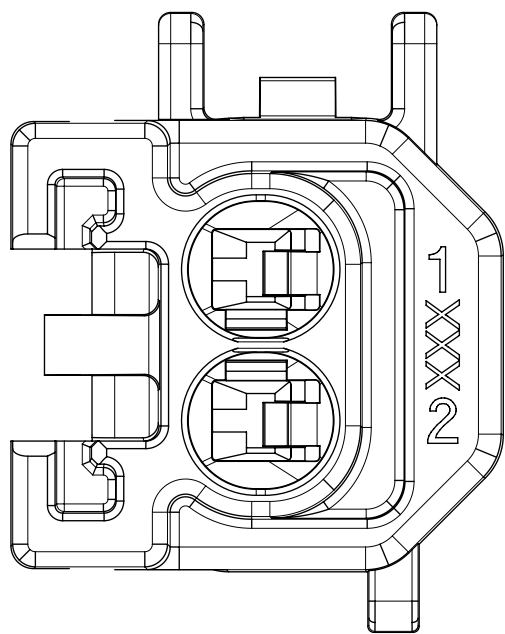
KEY OPTION C



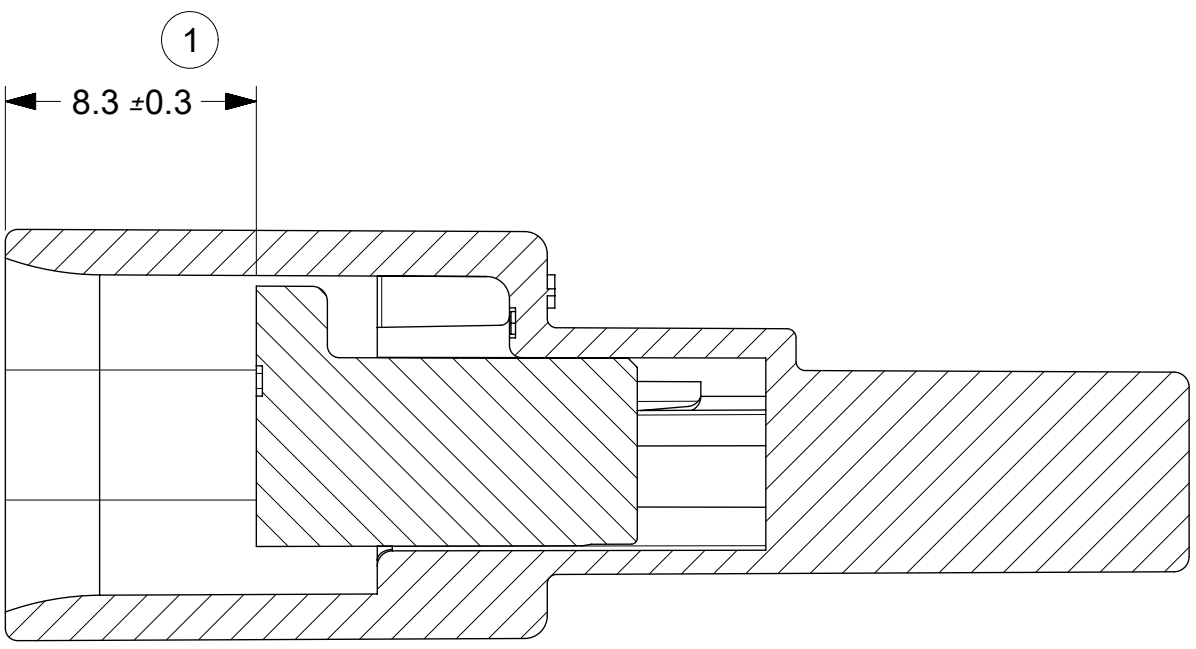
KEY OPTION B



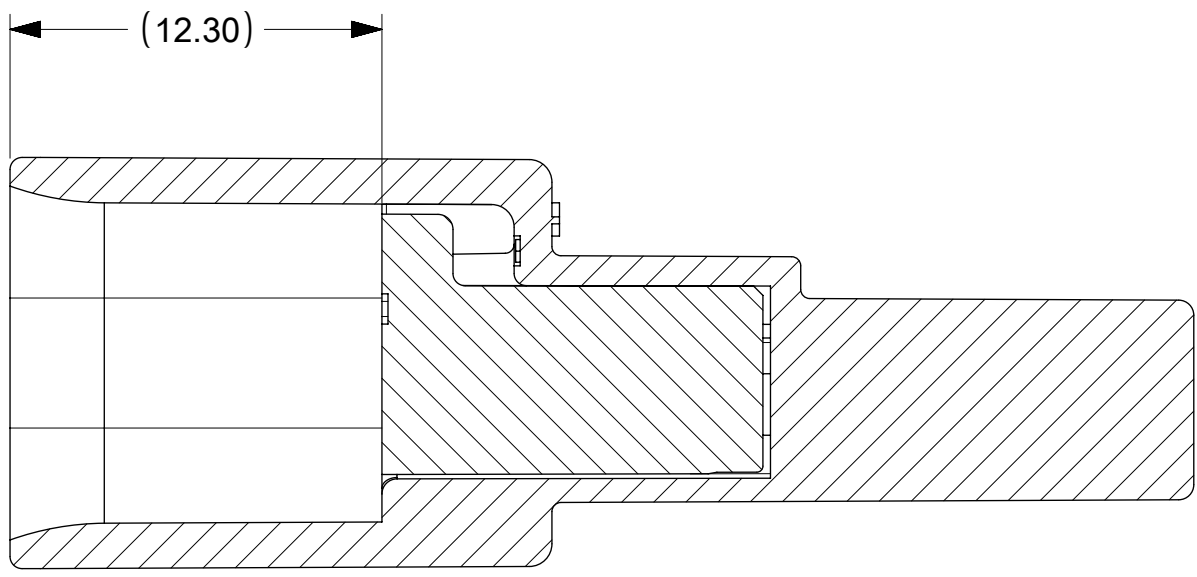
KEY OPTION C  
W/CLIP SLOT



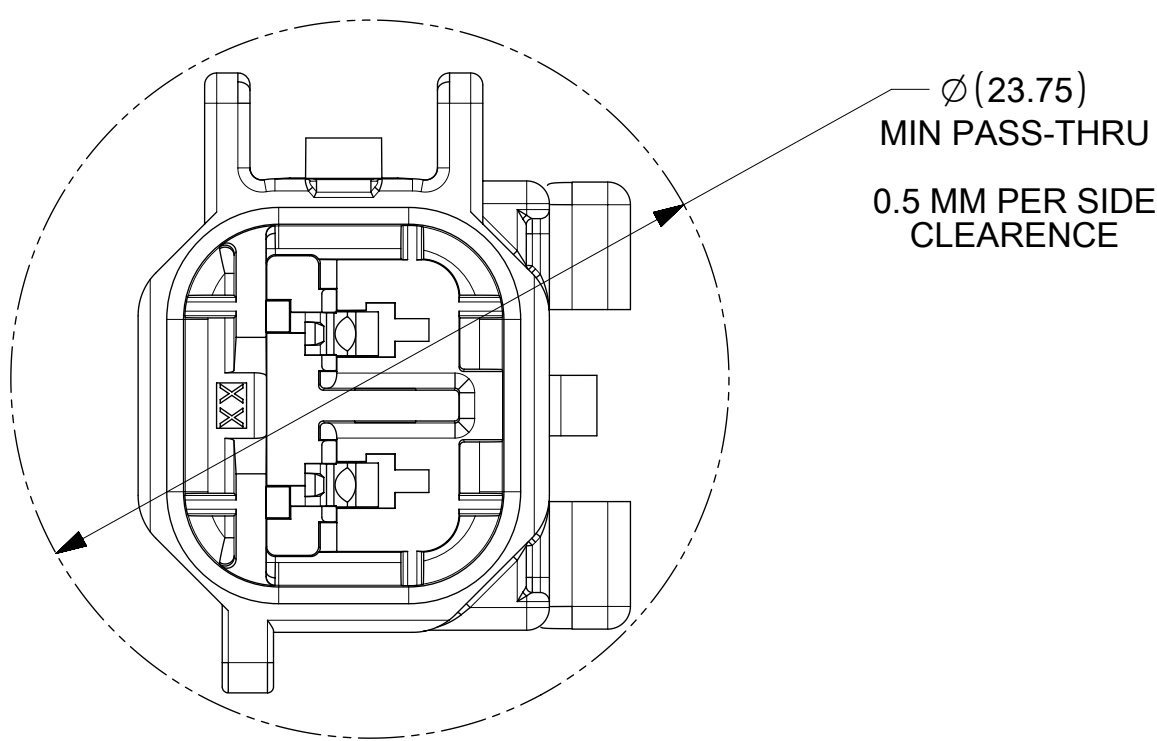
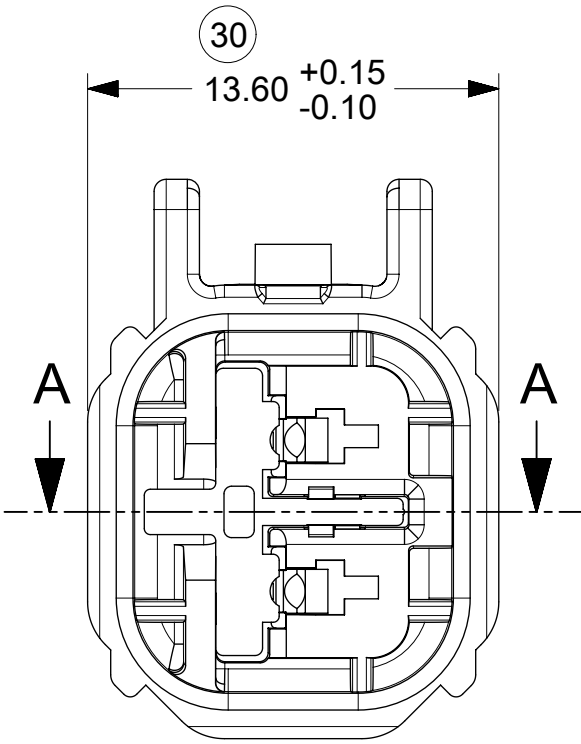
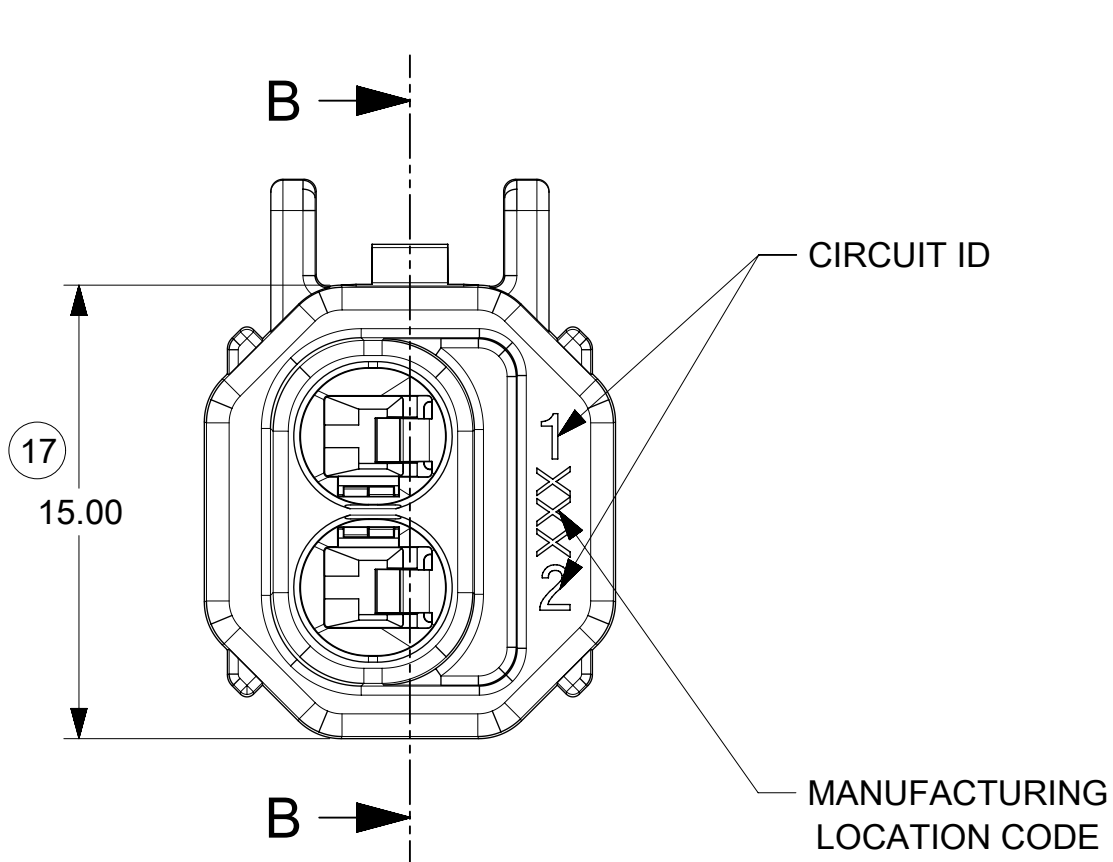
KEY OPTION B  
W/CLIP SLOT



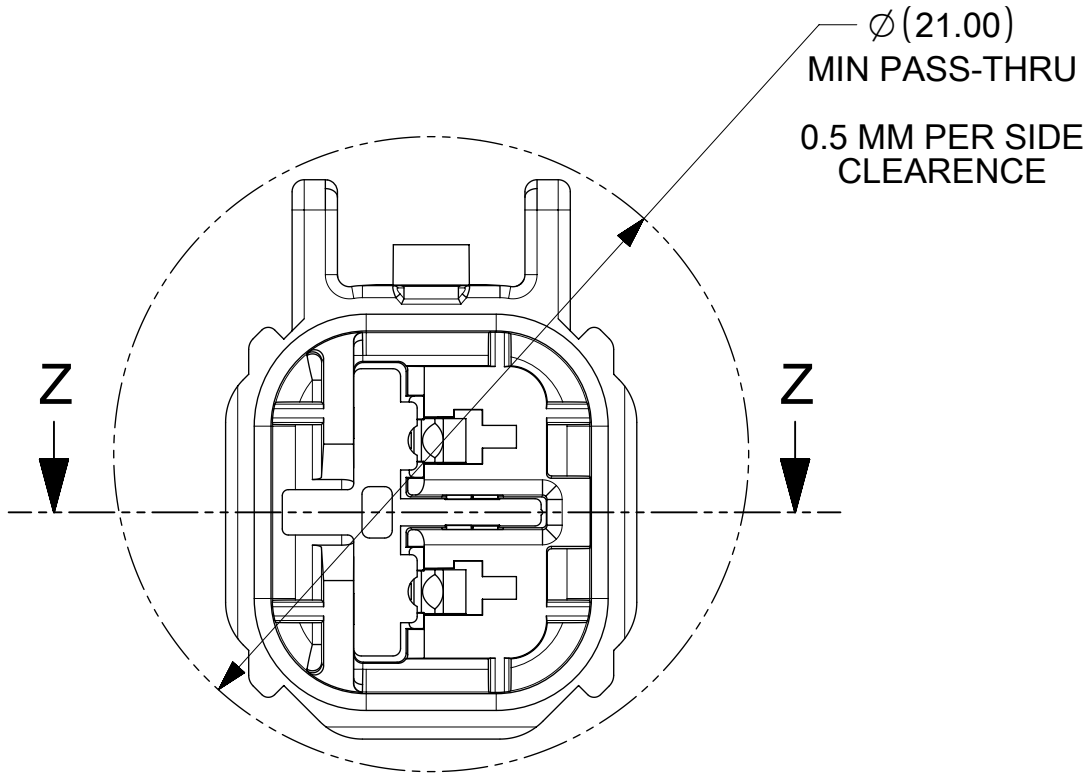
TPA SHOWN IN PRE-LOCK POSITION  
SECTION A-A



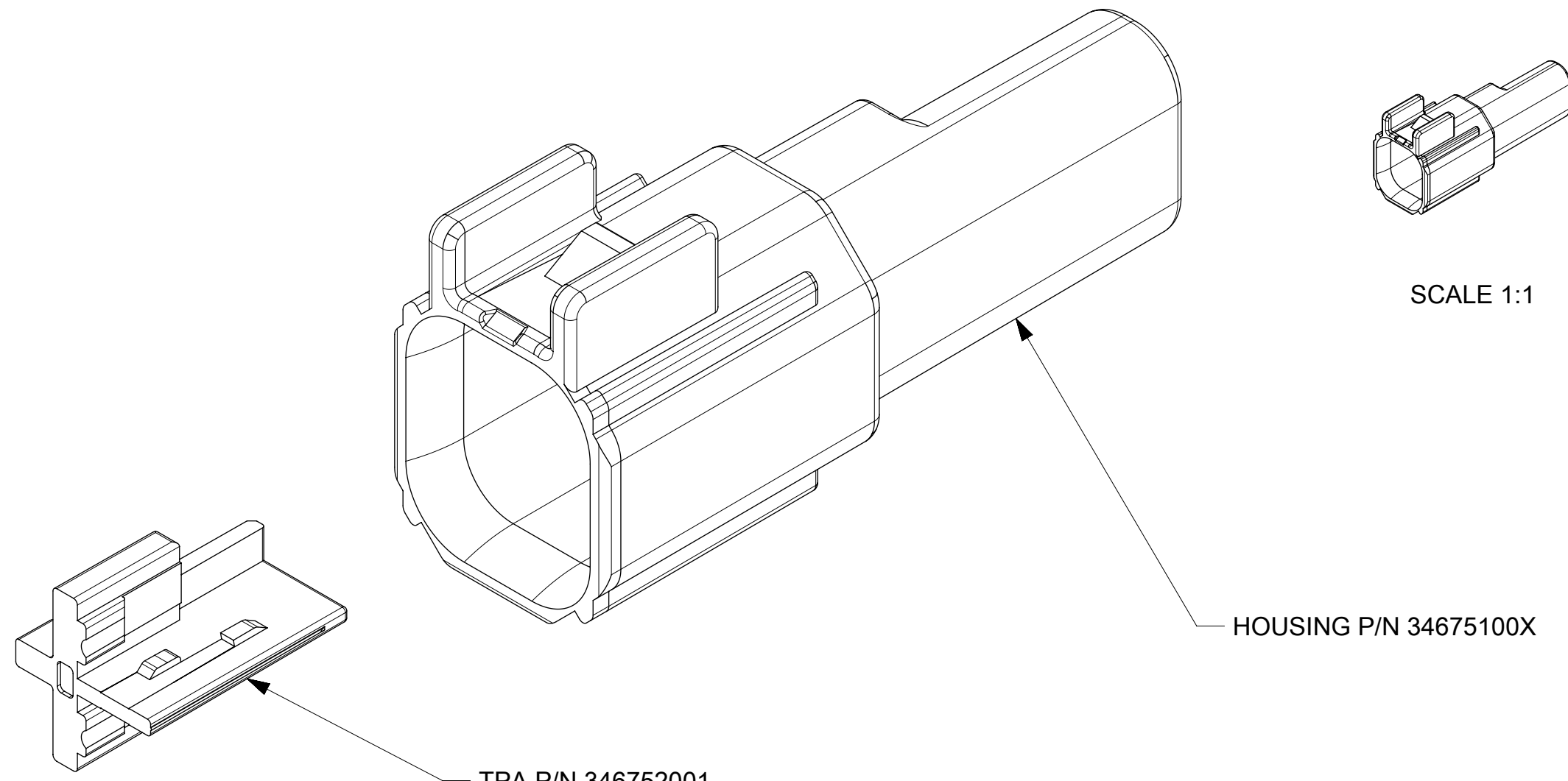
TPA SHOWN IN FINAL LOCK POSITION  
SECTION Z-Z



KEY OPTION B  
W/CLIP SLOT



KEY OPTION C



SCALE 1:1

NOTES: VALID UNLESS OTHERWISE SPECIFIED

- GENERAL:
  - APPLICATION SPECIFICATION SEE: AS-34062-000
    - CONTAINS: PRODUCT INTRODUCTION, PRODUCT SUMMARY, CONNECTOR ASSEMBLY, PACKAGING INFORMATION, CONNECTOR MATING, SERVICE INSTRUCTIONS, ELECTRICAL CONTINUITY CHECKING, CRIMPING, AND TROUBLESHOOTING.
    - DESIGNED TO MATE WITH RECEPTACLE SEALED ASSEMBLY AS SPECIFIED IN MOLEX CHARTED DRAWING SD-34062-002.
    - ASSEMBLY SHIPPED WITH PLR IN PRE-LOCK POSITION (SEE PLR PRE-LOCK VIEW).
  - PRODUCT SPECIFICATION SEE: PS-34062-000
    - CONTAINS: SCOPE, PRODUCT DESCRIPTION, INTEGRAL COMPONENTS AND ACCESSORIES, APPLICABLE DOCUMENTS AND SPECIFICATIONS, RATINGS, PERFORMANCE, PACKAGING, GAUGE AND FIXTURES, AND OTHER INFORMATION.
  - PACKAGING SPECIFICATION PER MOLEX DRAWING: PK-31300-635
  - PARTS MUST BE IN COMPLIANCE TO MOLEX CHEMICAL SUBSTANCES FOR PRODUCTS AND PACKAGING SPECIFICATION: QEHS-699000-300
  - DATA MUST BE SUBMITTED UNDER THE MOLEX PART NUMBER TO IMDS (COMPANY ID#13255)
- DESIGN - MATERIALS:
  - HOUSING & TPA NYLON 6 30% GLASS FILLED
- DESIGN - GEOMETRY:
  - THE 3-D CAD DATA IS BASIC (WITHOUT TOLERANCE) AND MASTER FOR THIS PART WITH THE EXCEPTION OF UNDERLINED DIMENSIONS. DIMENSIONAL INFORMATION NOT SHOWN ON THIS DRAWING IS DEFINED BY THE DATA FILE AT ITS LATEST REVISION.
  - GEOMETRIC DIMENSIONS AND TOLERANCES PER ASME Y14.5M-1994
  - EDGES AND UNDIMENSIONED DETAILS PER ISO13715
  - CORNERS SHOWN AS SHARP TO BE R 0.2 MAX.
  - LETTERING SHALL BE 0.15 MAX RAISED IN 0.25 MAX RECESS PAD. THIS INCLUDES RECYCLING CODE, CAVITY ID, VENDOR IDENTIFICATION, AND CUSTOMER MATERIAL NUMBER.
  - VISUAL DEFECTS SHALL MEET COSMETIC STANDARD PS-45499-002 (Class B).
  - LASER MARKING: TBD

SECTION B-B

INSPECTION BALLOON NUMBER LOG				THIS DRAWING CONTAINS INFORMATION THAT IS PROPRIETARY TO MOLEX ELECTRONIC TECHNOLOGIES, LLC AND SHOULD NOT BE USED WITHOUT WRITTEN PERMISSION			
PER DRAWING REVISION:D3 LAST BALLOON NUMBER USED: ADDED BALLOON NUMBERS: REMOVED BALLOON NUMBERS:				D3	NX-REMASTERING		
				REV.	DESCRIPTION		
QUALITY SYMBOLS	GENERAL TOLERANCES (UNLESS SPECIFIED)			DIMENSION UNITS	SCALE	molex®	
= 0	ANGULAR TOL ± 3.0 °			MM	4:1		
= 0	4 PLACES ±			DRWN BY	DATE	2 WAY INLINE MALE ASSEMBLY	
= 0	3 PLACES ±			M.VANSLAMBRO	2007-05-03		
= 0	2 PLACES ± 0.1			CHK'D BY	DATE	PRODUCT CUSTOMER DRAWING	
= 0	1 PLACE ± 0.2			S.VERZYL			
= 0	0 PLACES ±			APPR BY	DATE		
= 0	DRAFT WHERE APPLICABLE MUST REMAIN WITHIN DIMENSIONS			S.MARCEAU	2017/06/14	34675 SEE BOM GENERAL MARKET	
= 0				DRAWING SIZE	THIRD ANGLE PROJECTION		
= 0				D			
= 0	EC NO: 117955	DRWN: PKABBUR	CHK'D: KDEKOSKI	REV: D3	APP: 2017/06/14	DOCUMENT NUMBER	DOC TYPE
						SD-34675-001	PSD
						000	1 OF 1

BILL OF MATERIALS (BOM)			
ASSEMBLY NUMBER	KEY OPTION	COLOR	CLIPSLOT
34675-0001	C	BLACK	NO
34675-0002	B	GRAY	NO
34675-0003	C	BLACK	YES
34675-0004	B	GRAY	YES