

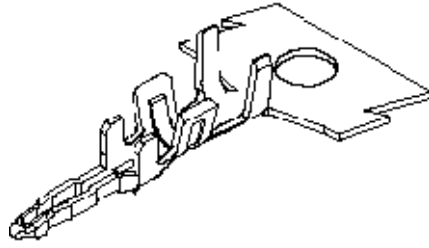
产品编号 : [350449102](#)

Product Description : 2.00/2.50mm Board-in Terminal, Pre-Tin Plating, Wire Insulation Diameter 1.50mm max.

系列号 : 35044

状态 : Active

Product Category : Crimp Terminals



文件和资源

图纸

[图纸 350449102_sd.pdf](#)

3D 模型和设计文件

[3D模型 350449102_stp.zip](#)

规格

[包装规格 PK-35044-001-001.pdf](#)

[产品规格 PS-35021-001-001.pdf](#)

[产品规格 PS-35023-001-001.pdf](#)

[产品规格 PS-35516-001-001.pdf](#)


[产品规格 PS-68418-001-001.pdf](#)

模具规格

[压接规格 CS-35044-001-001.pdf](#)

产物环境合规

合规

GADSL/IMDS	Compliant with Exemption 44
China RoHS	
EU ELV	Compliant per 2000/53/EC
Low-Halogen Status	Low-Halogen per IEC 61249-2-21
REACH SVHC	Not Contained per D(2023)3788-DC (14 Jun 2023)
EU RoHS	Compliant per EU 2015/863

多部分产品合规性声明

- Eu RoHS

- REACH SVHC

- Low-Halogen

多部分行业合规性文件

- IPC 1752A Class C

- IPC 1752A Class D

- Molex Product Compliance Declaration

- IEC-62474

- chemSHERPA (xml)

欧盟 RoHS 合格证书

产品详情

常规

状态	活动
类别	Crimp Terminals
系列	35044
说明	2.00/2.50mm Board-in Terminal, Pre-Tin Plating, Wire Insulation Diameter 1.50mm max.
应用	Signal, Wire-to-Board
产品系列	Board-in Connectors
产品名称	Board-in
UPC	800754787338

电气

每触点最大电流	2.5A
电压 - 最大	125V

物理

性别	男
材料 - 金属	Brass
材料 - 接合部位电镀	Tin
材料 - 终端电镀	Tin
净重	0.033/g
包装形式	Reel
最薄镀层 - 接合部位	0.889µm
最薄镀层 - 端接	0.889µm
终端界面类型	Crimp or Compression

导线绝缘直径	1.50mm max.
线径规格 (AWG)	24, 26, 28
线缆尺寸mm ²	不适用

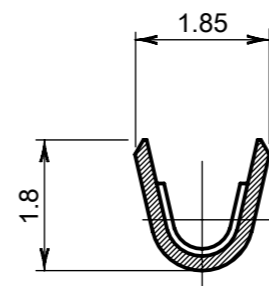
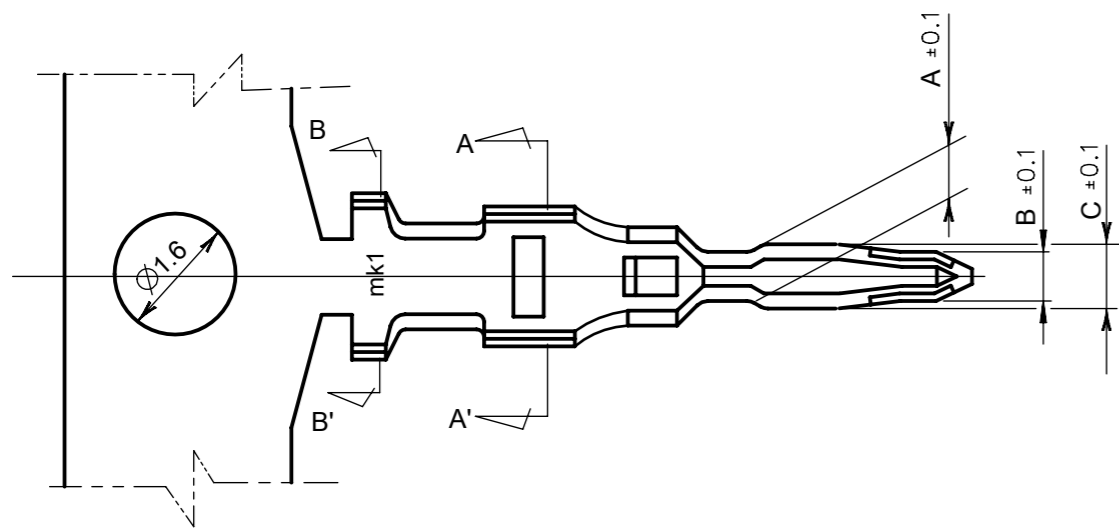
可连接使用部件

描述	产品编号
2.00mm Pitch Board-In Right-Angle and Vertical Crimp Housings	<u>35023</u>

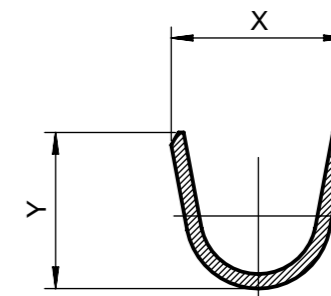
施工工具

全局

描述	产品编号
Hand Crimp Tool for 2.00mm Pitch Board-In Crimp Terminals, 24AWG, UL1007 and UL1061 Wire	<u>2133092400</u>
Hand Crimp Tool for 2.00mm Pitch Board-In Crimp Terminals, 0.22mm ² and 0.35mm ² , FLRY-A Wire	<u>2133092500</u>
Hand Crimp Tool for 2.00mm Pitch Board-In Crimp Terminals, 26 AWG, UL1007 and UL1061 Wire	<u>2133092900</u>
Hand Crimp Tool for 2.00mm Board-In Crimp Terminals, 28 AWG, UL1007 and UL1061 Wire	<u>2133093600</u>
T2 Terminator Tooling Die	<u>0638537000</u>
FineAdjust Applicator	<u>0638637000</u>



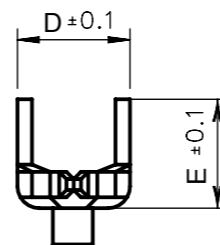
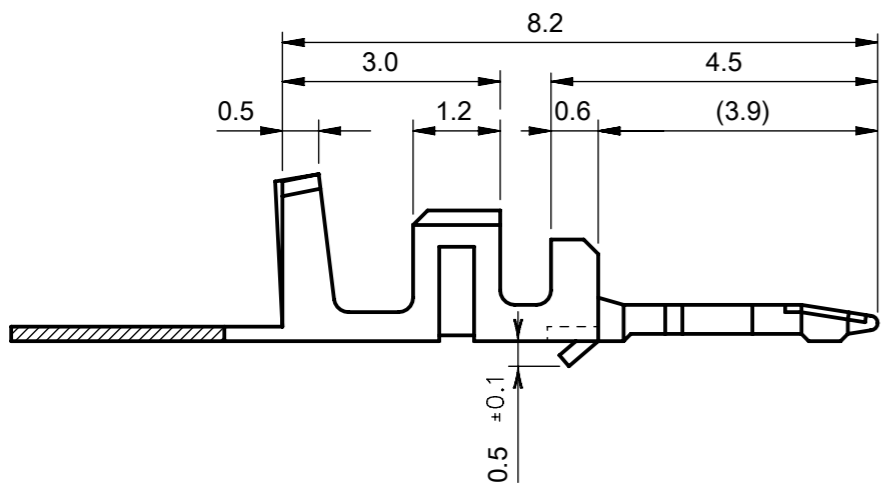
SECTION A-A'



SECTION B-B'

NOTE

1. MATERIAL : BRASS
 2. FINISHES
 - 1) PRE-PLATING : 0.9 MICROMETER TIN(Sn) MINIMUM OVER
0.5 MICROMETER MINIMUM COPPER OVERALL
 - 2) POST-PLATING : 1~3 MICROMETER TIN(Sn) OVER
1 MICROMETER MINIMUM COPPER OVERALL
 3. WIRE STRIP LENGTH : 2.0 ~ 2.5MM
 4. TERMINAL INSERTION FORCE: 1.0kgf MAX.
 5. TERMINAL RETENTION FORCE: 1.0kgf MIN.
 6. USED WITH HOUSING : 35022, 35023, 35516
 7. WIRE CRIMPING WIDTH : CONDUCTOR BARREL : 1.2mm
INSULATION BARREL : 1.3mm
 - Ⓢ 8. APPLICABLE WIRE RANGE : AWG #22~#28 (SEE TABLE)
 - Ⓢ 9. APPLICABLE INSULATION RANGE : \varnothing 1.5~1.9mm MAX. (SEE TABLE)
 10. PCB HOLE SIZE(Ref.) : 2.0 PITCH - \varnothing 0.8 \pm 0.05
2.5 PITCH - \varnothing 1.0 \pm 0.05
- DETAIL SIZE REFERS 35022 & 35023 DRAWINGS.



DESCRIPTION	Ⓢ WIRE RANGE	Ⓢ ENG. NO.	DIMENSION							PLATING	PACKING
			A	B	C	D	E	X	Y		
2.5MM B-IN TYPE	AWG #22~28 (INS. DIA : \varnothing 1.9mm MAX.)	35044-9104	0.70	0.68	1.05	1.55	1.50	2.4	2.15	PRE-PLATING	GENERAL PACKING
2.0MM B-IN TYPE	AWG #24~28 (INS. DIA : \varnothing 1.5mm MAX.)	35044-9102	0.65	0.65	0.85	1.40	1.40	2.4	2.15	PRE-PLATING	GENERAL PACKING

THIS DRAWING CONTAINS INFORMATION THAT IS PROPRIETARY TO MOLEX ELECTRONIC TECHNOLOGIES, LLC AND SHOULD NOT BE USED WITHOUT WRITTEN PERMISSION

DIMENSION UNITS mm	SCALE 10:1	CURRENT REV DESC: REMOVED OBSOLETE PART NUMBER AS PER PCN#509450.	molex			
GENERAL TOLERANCES (UNLESS SPECIFIED)						2.0/2.5 B-IN TERL
ANGULAR TOL \pm 1.0°			PRODUCT CUSTOMER DRAWING			
4 PLACES \pm		EC NO: 694111	DOCUMENT NUMBER SD-35044-001			
3 PLACES \pm		DRWN: SANTHN 2022/02/07				DOC TYPE PSD
2 PLACES \pm 0.15		CHK'D: GGA 2022/03/31	MATERIAL NUMBER SEE TABLE			
1 PLACE \pm 0.2		APPR: GGA 2022/03/31				CUSTOMER GENERAL MARKET
0 PLACES \pm		INITIAL REVISION: DRWN: KSKIM 2003/06/09 APPR: CHANGWOOLEE 2003/06/10	SHEET NUMBER 1 OF 1			
DRAFT WHERE APPLICABLE MUST REMAIN WITHIN DIMENSIONS	THIRD ANGLE PROJECTION	DRAWING A3-SIZE				SERIES 35044