



产品编号 : [39000046](#)

Product Description : Mini-Fit Female Crimp Terminal, Tin (Sn) over Copper (Cu) Plated Brass, 22-28 AWG, Reel

系列号 : 5556

状态 : Active

Product Category : Crimp Terminals

工程编号 : 5556T2

Packaging Alternative : 0039000047 (Bag)



文件和资源

图纸

[图纸 039000046_sd.pdf](#)

[包装设计图 55560001-PK-000.pdf](#)

规格

[应用规格 55560001-AS-000.pdf](#)

[产品规格 55560002-PS-CH-000.pdf](#)

[产品规格 55560002-PS-ES-000.pdf](#)

[产品规格 55560002-PS-SK-000.pdf](#)

[产品规格 55560008-TS-000.pdf](#)

[产品规格 PS-5556-001-001.pdf](#)

[产品规格 PS-5556-002-001.pdf](#)

[测试摘要 55560000-TS-000.pdf](#)

[测试摘要 55560010-TS-000.pdf](#)

[测试摘要 TS-5556-002-001.pdf](#)


模具规格

[压接规格 CS-5556X2_5558X2-031.pdf](#)

[压接规格 CS-5556X2_5558X2-032.pdf](#)

产物环境合规

合规

GADSL/IMDS	Compliant with Exemption 44
China RoHS	
EU ELV	Compliant per 2000/53/EC
Low-Halogen Status	Low-Halogen per IEC 61249-2-21

REACH SVHC	Not Contained per D(2023)3788-DC (14 Jun 2023)
EU RoHS	Compliant per EU 2015/863

多部分产品合规性声明

- Eu RoHS
- REACH SVHC
- Low-Halogen

多部分行业合规性文件

- IPC 1752A Class C
- IPC 1752A Class D
- Molex Product Compliance Declaration
- IEC-62474
- chemSHERPA (xml)

欧盟 RoHS 合格证书

产品详情

常规

状态	活动
类别	Crimp Terminals
系列	5556
说明	Mini-Fit Female Crimp Terminal, Tin (Sn) over Copper (Cu) Plated Brass, 22-28 AWG, Reel
应用	Power, Wire-to-Board, Wire-to- Wire
产品系列	Mini-Fit Family Power Connectors
产品名称	Mini-Fit
UPC	800753627710

电气

每触点最大电流	9.0A
电压 - 最大	600V

物理

耐用性(插拔次数) - 最多次数	30
性别	女
材料 - 金属	Brass

材料 - 接合部位电镀	Tin
材料 - 终端电镀	Tin
净重	165.000/mg
包装形式	Reel
最薄镀层 - 接合部位	0.889µm
最薄镀层 - 端接	0.889µm
终端界面类型	Crimp or Compression
导线绝缘直径	0.90-1.80mm
线径规格 (AWG)	22, 24, 26, 28
线缆尺寸mm ²	不适用

进程

无铅	不适用
----	-----

可连接使用部件

描述	产品编号
Mini-Fit Jr. Receptacle Housings	<u>5557</u>
Mini-Fit BMI Dual Row Receptacle Housings	<u>44516</u>
Mini-Fit BMI Dual Row Receptacle Housings	<u>42474</u>
Mini-Fit BMI Dual Row Receptacle Housings	<u>43760</u>

施工工具

全局

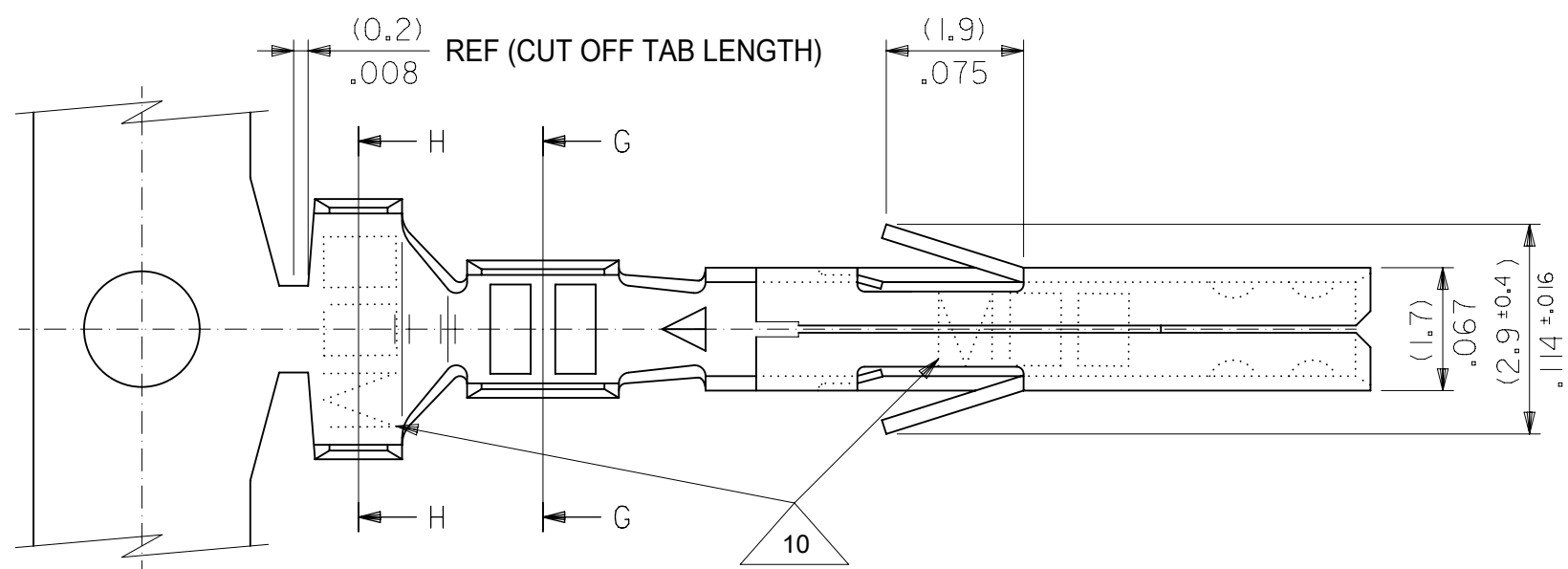
描述	产品编号
Extraction Tool for Mini-Fit Jr. Terminals	<u>0011030044</u>
PremiumGrade Hand Crimp Tool for Mini-Fit Jr. Male and Female Terminals, 22-28 AWG	<u>0638191000</u>
FineAdjust Applicator for Insulation Diameter 1.30-1.50mm, 22-28 AWG Wire	<u>0639002700</u>
FineAdjust Applicator for Insulation OD 1.10-1.30mm - 22-28 AWG	<u>0639020200</u>

FineAdjust Applicator for Insulation OD 0.95-1.08mm - 22-28 AWG	<u>0639023800</u>
T2 Terminator for Insulation OD 1.30-1.50mm, 22-28 AWG	<u>0639102700</u>
T2 Terminator for insulation OD 1.10-1.30mm - 22-28 AWG	<u>0639120200</u>
T2 Terminator for Insulation Diameter 0.95-1.08mm, 22-28 AWG	<u>0639123800</u>

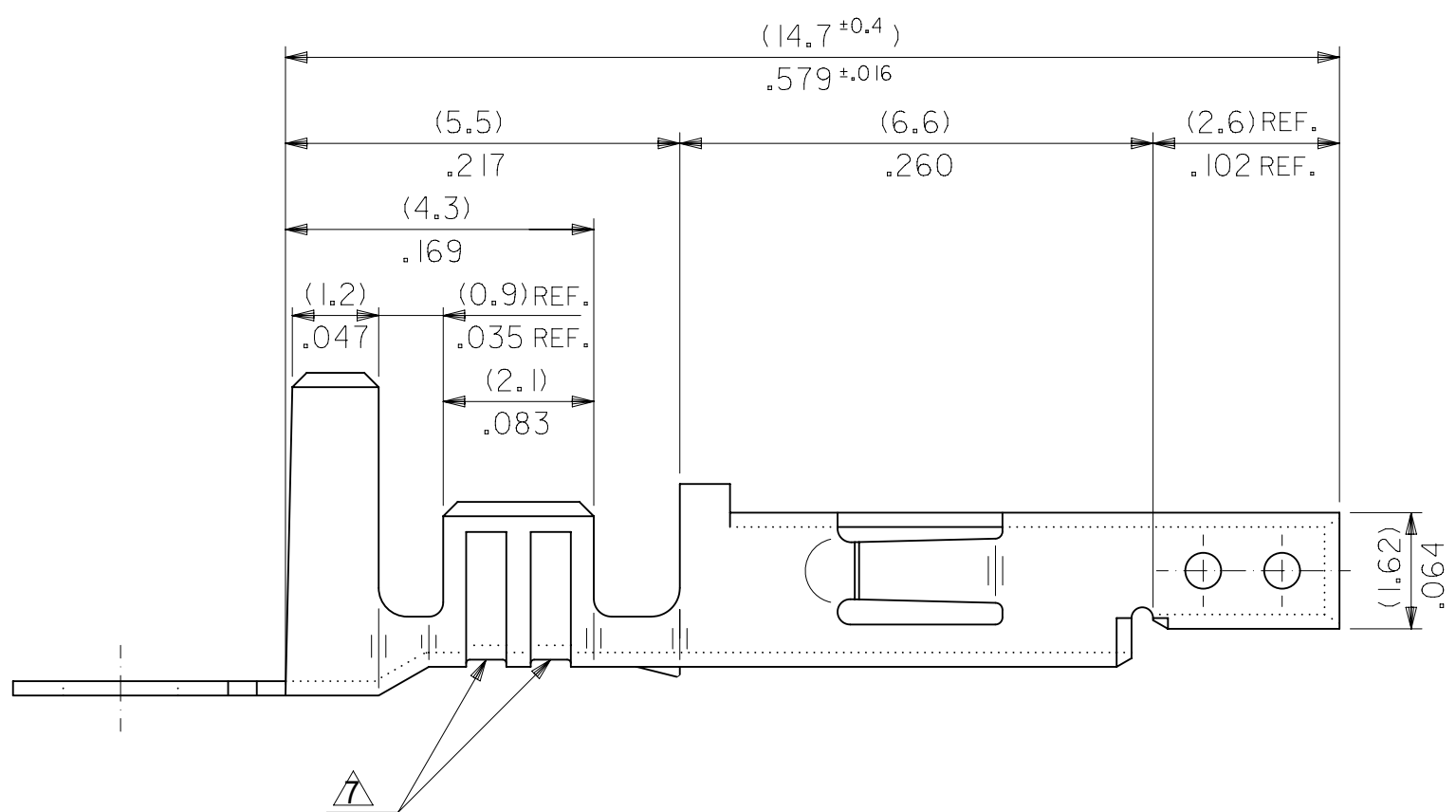
施工工具

日本

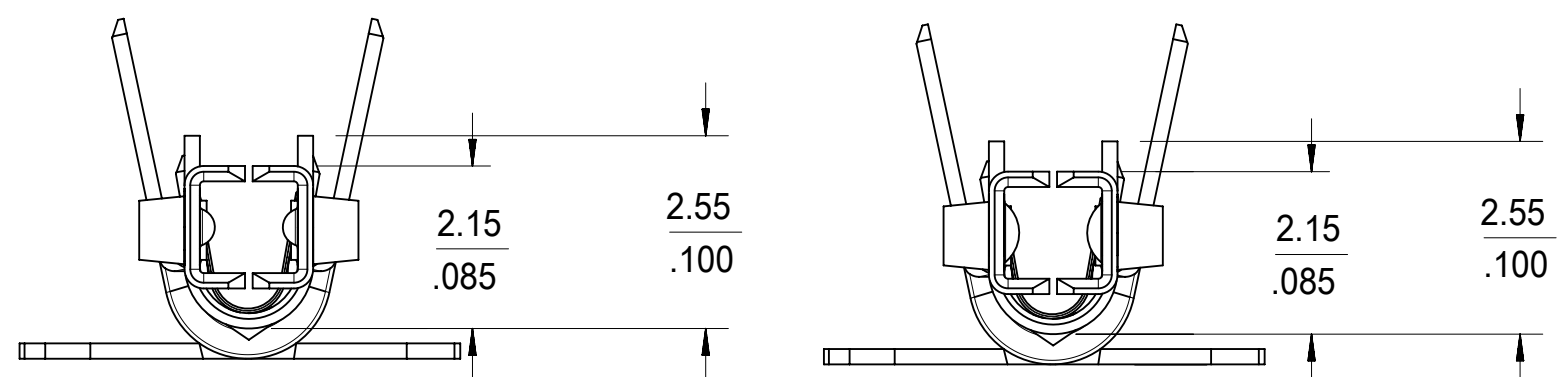
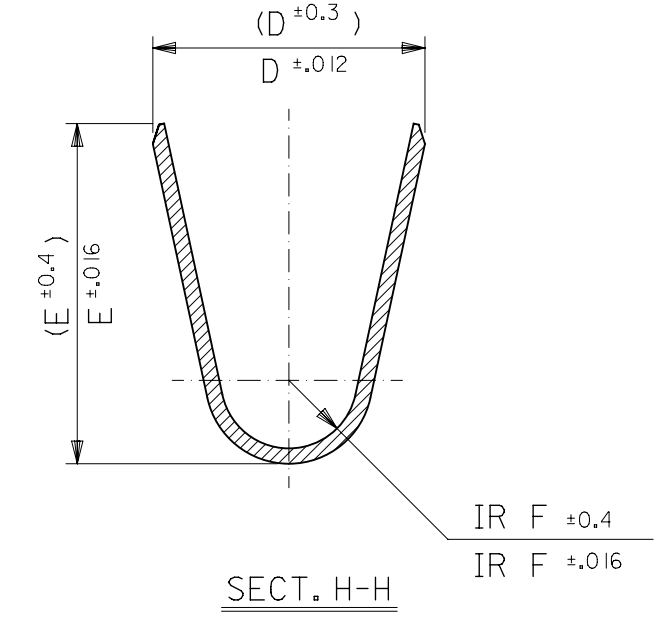
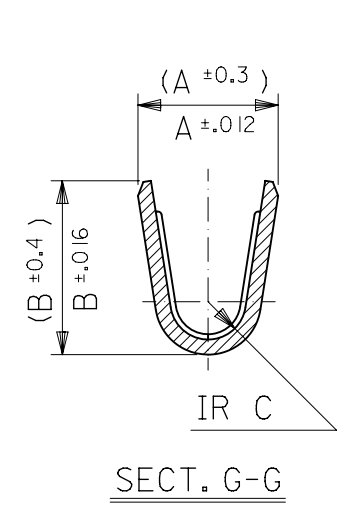
描述	产品编号
S-1 Applicator for Mini-Fit Plug and Receptacle Terminals, 22-28 AWG	<u>0570223720</u>
Hand Extraction Tool	<u>0570316000</u>



- NOTES
1. MATERIAL: SEE CHART.
 2. FINISH: SEE CHART.
 3. PRODUCT SPECIFICATION: PS-5556-001, PS-5556-002, PS-5556-003.
 4. PACKAGING SPECIFICATION: PK-5556-001 FOR CHAIN TERMINALS
PK-5556-003 FOR LOOSE TERMINALS.
 5. MATES WITH: 5558, 5566, 5569, 30069, 30070, 42440, 42404, 43879, 43810, 44068.
 6. APPLICABLE HOUSING: 5557, 30067, 44516, OR 42474.
 7. THE NUMBER OF SERRATIONS TO BE ONE FOR WIRE RANGE #22-28.
 8. WHEN TERMINALS ARE INSTALLED IN THE HOUSING THE WIRES ARE TO BE DRESSED IN SUCH A MANNER TO ALLOW THE TERMINALS TO FLOAT FREELY IN THE POCKET.
 9. PART CONFORMS TO CLASS "B" REQUIREMENTS OF COSMETIC SPECIFICATION PS-45499-002.
 10. TEXT ON PART IS FOR REFERENCE ONLY. TEXT AND TEXT LOCATION MAY VARY DEPENDING ON PART NUMBER AND/OR TOOL.



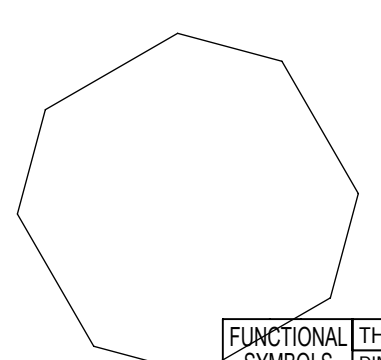
#18-24 TERMINAL SHOWN



CONTACT DIMPLE CONFIGURATIONS

SYMBOLS	THIS DRAWING CONTAINS INFORMATION THAT IS PROPRIETARY TO MOLEX ELECTRONIC TECHNOLOGIES, LLC AND SHOULD NOT BE USED WITHOUT WRITTEN PERMISSION			
	DIMENSION UNITS	SCALE	CURRENT REV DESC:	
∇ = 0	IN/MM	10:1	molex MINI FIT JR OVERALL TIN FEMALE CRIMP TERMINAL PRODUCT CUSTOMER DRAWING	
∇ = 0	GENERAL TOLERANCES (UNLESS SPECIFIED)			
∇ = 0	MM	INCH		
S = 0	4 PLACES ±	±		
∇ = 0	3 PLACES ±	± 0.008	EC NO: 660823	
∇ = 0	2 PLACES ±	± 0.008	DRWN: HPAN18 2021/04/14	
∇ = 0	1 PLACE ±	±	CHK'D: YXZHENG 2021/04/14	
∇ = 0	0 PLACES ±	±	APPR: YXZHENG 2021/04/14	
∇ = 0	ANGULAR TOL ±	3.0 °	INITIAL REVISION:	
∇ = 0	DRAFT WHERE APPLICABLE MUST REMAIN WITHIN DIMENSIONS		DRWN: HIRAMOTO 1991/05/18	
	THIRD ANGLE PROJECTION	DRAWING	SERIES	
		C-SIZE	5556	
		SEE CHART	GENERAL MARKET	
			1 OF 2	

REFLOWED MATTE TIN 0.00090/(.000035) MIN. (PREPLATE) (FINISH IS BRIGHT IN APPEARANCE, THICKNESS AS APPLIED PRIOR TO REFLOW)	PHOS BRONZE	(0.9) .035	(4.5) .177	(3.6) .142	(0.6) .024	(2.7) .106	(2.3) .091	∅ (3.1) .122 MAX.	16	N/A	39-00-0080	5556 PBT3L	LOOSE	
		(0.6) .024	(2.3) .091	(2.3) .091	(0.4) .016	(1.65) .065	(1.8) .071	∅ (0.9-1.8) .035-.071	22-28	20+22	-0079	PBT3	CHAIN	
		(0.9) .035	(4.5) .177	(3.6) .142	(0.5) .020	(2.3) .091	(1.9) .075	∅ (1.3-3.1) .051-.122	18-24	18+22	-0066	PBT2L	LOOSE	
		(0.6) .024	(2.3) .091	(2.3) .091	(0.4) .016	(1.65) .065	(1.8) .071	∅ (0.9-1.8) .035-.071	22-28	20+20	-0065	PBT2	CHAIN	
		(0.9) .035	(4.5) .177	(3.6) .142	(0.5) .020	(2.3) .091	(1.9) .075	∅ (1.3-3.1) .051-.122	18-24	N/A	-0060	PBTL	LOOSE	
		(0.6) .024	(2.3) .091	(2.3) .091	(0.4) .016	(1.65) .065	(1.8) .071	∅ (0.9-1.8) .035-.071	22-28	22+22	-0059	PBT	CHAIN	
REFLOWED MATTE TIN 0.00090/(.000035) MIN. OVER COPPER 0.00050/(.000020) MIN. (PREPLATE) (FINISH IS BRIGHT IN APPEARANCE, THICKNESS AS APPLIED PRIOR TO REFLOW)	BRASS	(0.9) .035	(4.5) .177	(3.6) .142	(0.6) .024	(2.7) .106	(2.3) .091	∅ (3.1) .122 MAX.	16	N/A	-0078	T3L	LOOSE	
		(0.6) .024	(2.3) .091	(2.3) .091	(0.4) .016	(1.65) .065	(1.8) .071	∅ (0.9-1.8) .035-.071	22-28	20+22	-0077	T3	CHAIN	
		(0.9) .035	(4.5) .177	(3.6) .142	(0.5) .020	(2.3) .091	(1.9) .075	∅ (1.3-3.1) .051-.122	18-24	18+22	-0047	T2L	LOOSE	
		(0.6) .024	(2.3) .091	(2.3) .091	(0.4) .016	(1.65) .065	(1.8) .071	∅ (0.9-1.8) .035-.071	22-28	20+20	-0046	T2	CHAIN	
		(0.9) .035	(4.5) .177	(3.6) .142	(0.5) .020	(2.3) .091	(1.9) .075	∅ (1.3-3.1) .051-.122	18-24	N/A	-0039	TL	LOOSE	
		(0.6) .024	(2.3) .091	(2.3) .091	(0.4) .016	(1.65) .065	(1.8) .071	∅ (0.9-1.8) .035-.071	22-28	22+22	39-00-0038	5556 T	CHAIN	
PLATING	MATERIAL	F	E	D	C	B	A	INS. RANGE	SINGLE WIRE	DOUBLE WIRE	EDP NO.	ENG. NO.	FORM	
									WIRE AWG RANGE					



THIS DRAWING CONTAINS INFORMATION THAT IS PROPRIETARY TO MOLEX ELECTRONIC TECHNOLOGIES, LLC AND SHOULD NOT BE USED WITHOUT WRITTEN PERMISSION															
FUNCTIONAL SYMBOLS		DIMENSION UNITS		SCALE		CURRENT REV DESC:									
FA = 0		mm		1:1		EC NO: 660823									
FC = 0		GENERAL TOLERANCES (UNLESS SPECIFIED)				DRWN: HPAN18 2021/04/14									
FP = 0		ANGULAR TOL ± 3.0°				CHK'D: YXZHENG 2021/04/14									
DIVISIONAL SYMBOLS		4 PLACES ±		3 PLACES ±		APPR: YXZHENG 2021/04/14									
		2 PLACES ± 0.2		1 PLACE ± 0.2		INITIAL REVISION:									
		0 PLACES ±				DRWN: AZAHIROVIC 2018/05/30									
						APPR: FSMITH 2018/06/03									
DRAFT WHERE APPLICABLE MUST REMAIN WITHIN DIMENSIONS		THIRD ANGLE PROJECTION		DRAWING		SERIES		DOCUMENT NUMBER		DOC TYPE		DOC PART		REVISION	
		C-SIZE		5556		55560000-SD		PSD		000		A3			
						MATERIAL NUMBER		CUSTOMER		SHEET NUMBER					
						GENERAL MARKET		2 OF 2							