



产品编号 : 39000380

Product Description : KK 254 Crimp Terminal, 22-28 AWG, 0.35µm Gold (Au), Nickel (Ni) Under-Plate, Phosphor Bronze, Chain

系列号 : 2759

状态 : Active

Product Category : Crimp Terminals

工程编号 : 2759PBG



文件和资源

图纸

[图纸 039000380_sd.pdf](#)

规格

[产品规格 PS-10-07-001.pdf](#)

[产品规格 PS-2759-005-001.pdf](#)

[产品规格 PS-2759-006-001.pdf](#)

[产品规格 PS-5045-003-001.pdf](#)


[产品规格 PS-5045-004-001.pdf](#)

[产品规格 50510001-000.pdf](#)

[产品规格 50510002-PS-000.pdf](#)

产物环境合规

合规

GADSL/IMDS	Not Relevant
China RoHS	
EU ELV	Compliant per 2000/53/EC
Low-Halogen Status	Low-Halogen per IEC 61249-2-21
REACH SVHC	Not Contained per D(2023)3788-DC (14 Jun 2023)
EU RoHS	Compliant per EU 2015/863

多部分产品合规性声明

- Eu RoHS

- REACH SVHC

- Low-Halogen

多部分行业合规性文件

- IPC 1752A Class C

- IPC 1752A Class D

- Molex Product Compliance Declaration

- IEC-62474

- chemSHERPA (xml)

欧盟 RoHS 合格证书

产品详情

常规

状态	活动
类别	Crimp Terminals
系列	2759
说明	KK 254 Crimp Terminal, 22-28 AWG, 0.35 μ m Gold (Au), Nickel (Ni) Under-Plate, Phosphor Bronze, Chain
应用	Signal
产品系列	KK Interconnect Systems
产品名称	KK 254
UPC	800753336544

物理

性别	女
材料 - 金属	Phosphor Bronze
材料 - 接合部位电镀	金牌
材料 - 终端电镀	金牌
净重	64.000/mg
包装形式	Reel
最薄镀层 - 接合部位	0.356 μ m
最薄镀层 - 端接	0.356 μ m, 2.032 μ m
终端界面类型	Crimp or Compression
导线绝缘直径	1.2-1.7mm max.
线径规格 (AWG)	22, 24, 26, 28
线缆尺寸mm ²	不适用

可连接使用部件

描述	产品编号
KK 254 Single Row Crimp Housings	<u>2695</u>
KK 2.50mm Pitch Single Row Receptacle Housings	<u>5051</u>

施工工具

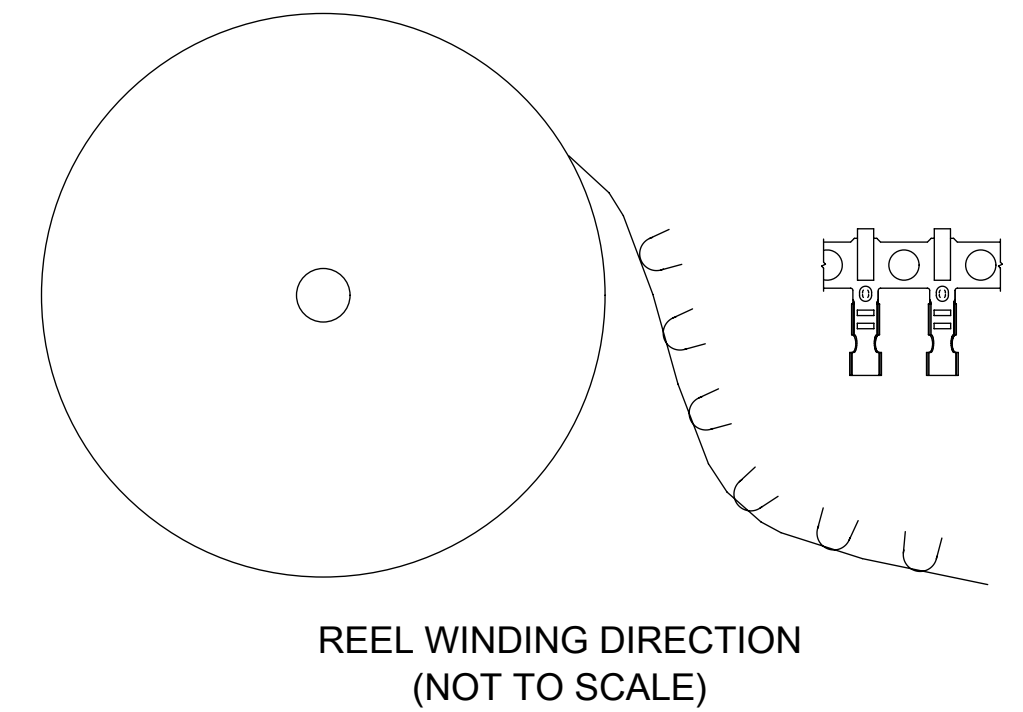
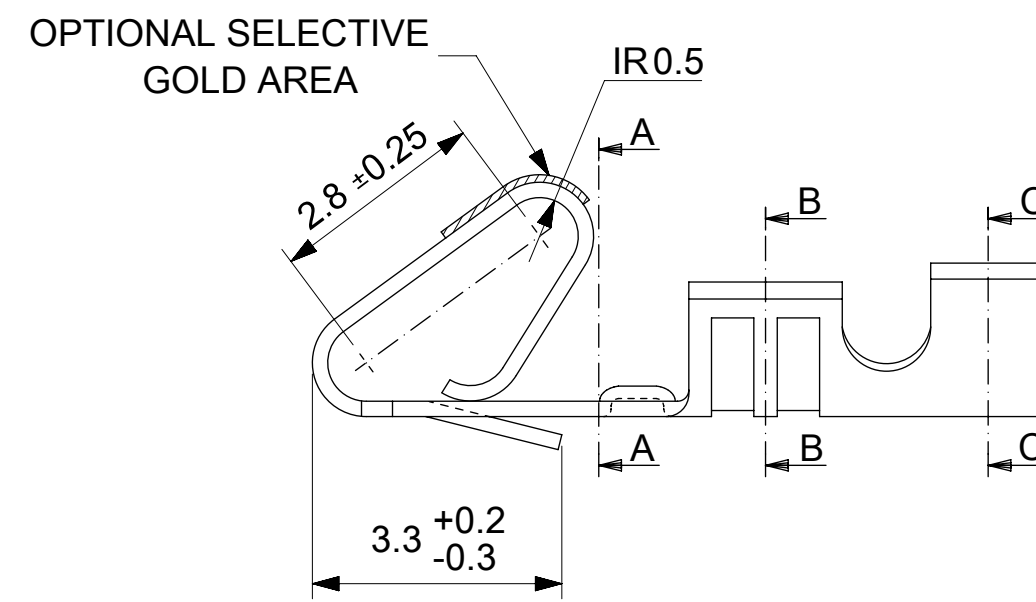
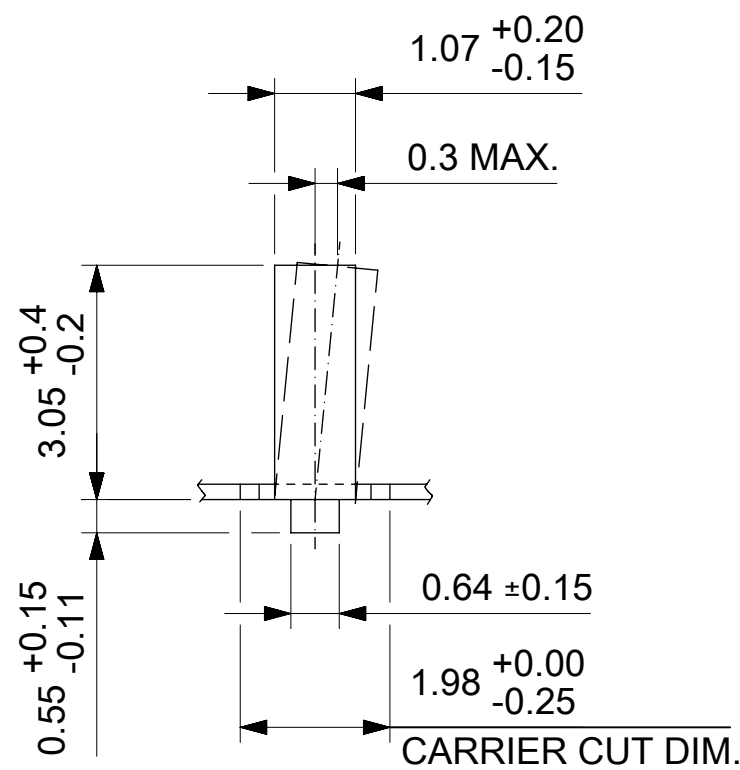
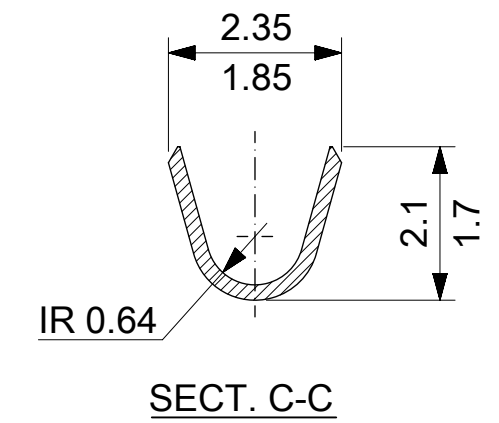
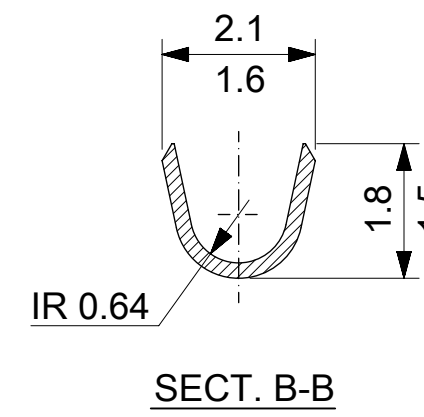
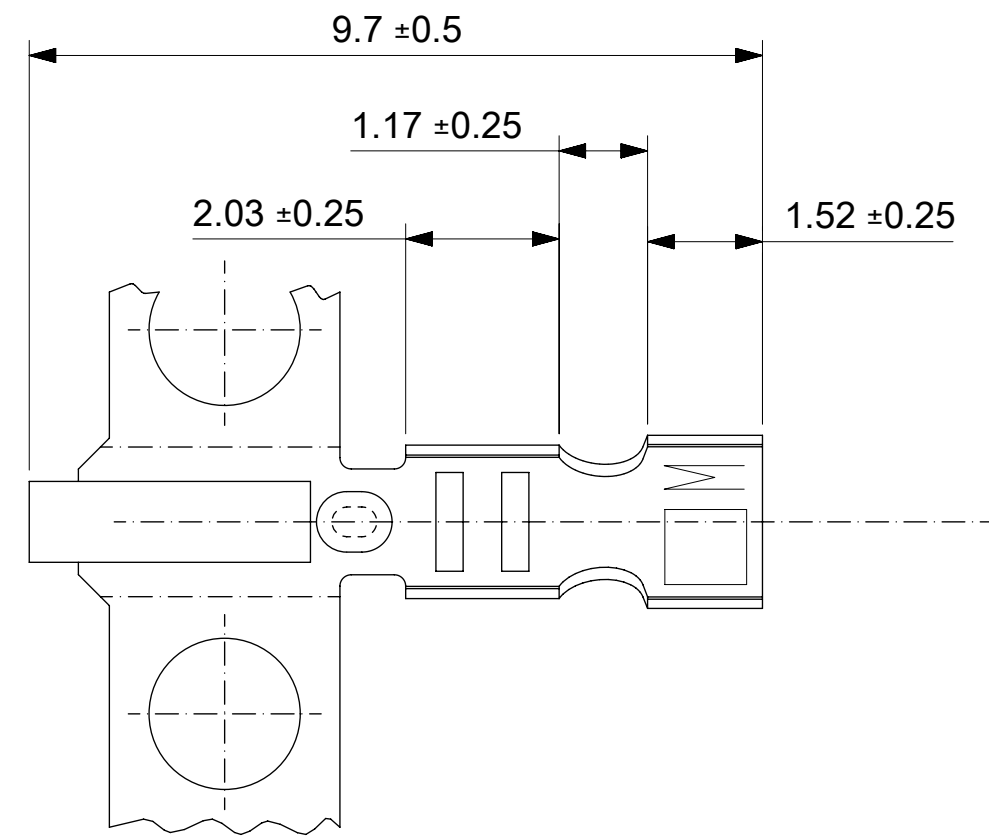
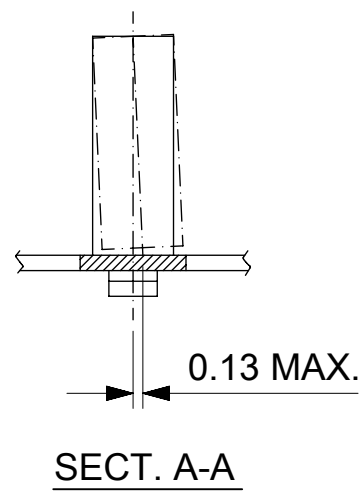
全局

描述	产品编号
Extraction Tool for KK 2.54mm Terminals, 22-30 AWG	<u>0011030022</u>
Insertion Tool for KK 2.54mm Terminals, 22-30 AWG	<u>0638120000</u>
Mini-Mac Applicator for KK and Cat Ear Terminals for 22-30 AWG Wire with Insulation Diameter 1.09-1.57mm and 22-28 AWG Wire with Insulation Diameter 1.20-1.70mm	<u>0638882000</u>
Mini-Mac Applicator for KK and Cat Ear Terminals for 22-30 AWG Wire with Insulation Diameter 0.96-1.20mm	<u>0638882100</u>

施工工具

日本

描述	产品编号
Applicator for M211A Bench Press, 22-28 AWG Wire	<u>0011260107</u>



39-00-0107	2759PBTL	LOOSE	0.00091 MIN REFLOWED TIN	PHOS BRO.
39-00-0064	2759PBT	CHAIN		
39-00-0381	2759PBGL	LOOSE	SELECTIVE GOLD: 0.00038 MIN. OVERALL GOLD FLASH: 0.00005-0.00025 OVERALL NICKEL UNDERPLATE: 0.00076 MIN.	BRASS
39-00-0380	2759PBG	CHAIN		
39-00-0377	2759GL	LOOSE	SELECTIVE GOLD: 0.00038 MIN. OVERALL GOLD FLASH: 0.00005-0.00025 OVERALL NICKEL UNDERPLATE: 0.00076 MIN.	BRASS
39-00-0376	2759G	CHAIN		
39-00-0373	2759TL	LOOSE	0.00089 MIN REFLOWED TIN OVER 0.00051 MIN COPPER UNDERPLATE	BRASS
39-00-0372	2759T	CHAIN		
EDP.NO.	ENG.NO.	FORM	FINISH	MATL

NOTES:

1. MATERIAL: SEE CHART
2. FINISH: SEE CHART
3. PRODUCT SPECIFICATION PS-10-07
4. DIM 1.98 +0/-0.25 TO BE SYMMETRICAL WITHIN 0.13 T.I.R
5. THIS PART CONFORMS TO CLASS B REQUIREMENTS OF COSMETIC SPECIFICATION PS-45499-002

THIS DRAWING CONTAINS INFORMATION THAT IS PROPRIETARY TO MOLEX ELECTRONIC TECHNOLOGIES, LLC AND SHOULD NOT BE USED WITHOUT WRITTEN PERMISSION

DIMENSION UNITS	SCALE	CURRENT REV DESC: REMOVED OBSOLETE PART NUMBER AS PER PCN#512351.		molex			
mm	NTS						
GENERAL TOLERANCES (UNLESS SPECIFIED)		EC NO: 717021		MINI.KK.CRIMP TYPE TERM			
ANGULAR TOL	± °	DRWN: SANTHN 2022/08/08		PRODUCT CUSTOMER DRAWING			
4 PLACES	±	CHK'D: GGA 2022/08/09		DOCUMENT NUMBER			
3 PLACES	±	APPR: GGA 2022/08/09		SD-2759X			
2 PLACES	±	INITIAL REVISION:		DOC TYPE DOC PART REVISION			
1 PLACE	±	DRWN: K. KOHAMA 2000/03/28		PSD 001 Y1			
0 PLACES	±	APPR: K. ASAKAWA 2000/04/28		SHEET NUMBER			
DRAFT WHERE APPLICABLE MUST REMAIN WITHIN DIMENSIONS		THIRD ANGLE PROJECTION	DRAWING	SERIES	MATERIAL NUMBER	CUSTOMER	SHEET NUMBER
			C-SIZE	2759	SEE CHART	GENERAL MARKET	1 OF 1

DWG. NO. SD-2759*

F

D

V

C

B

DO NOT SCALE DRAWING

8

7

6

5

4

3

2

1

F

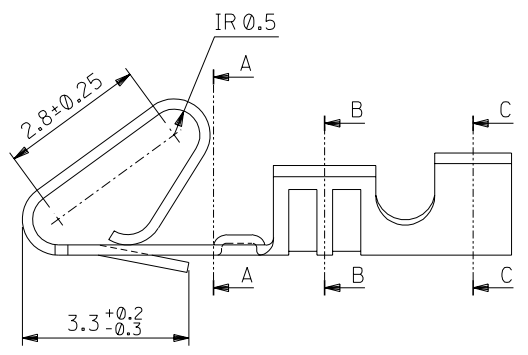
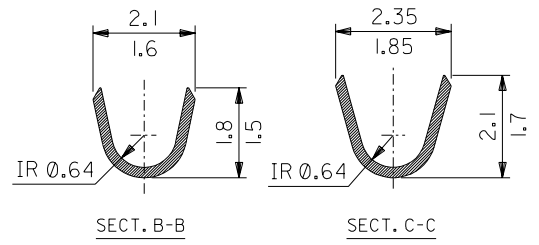
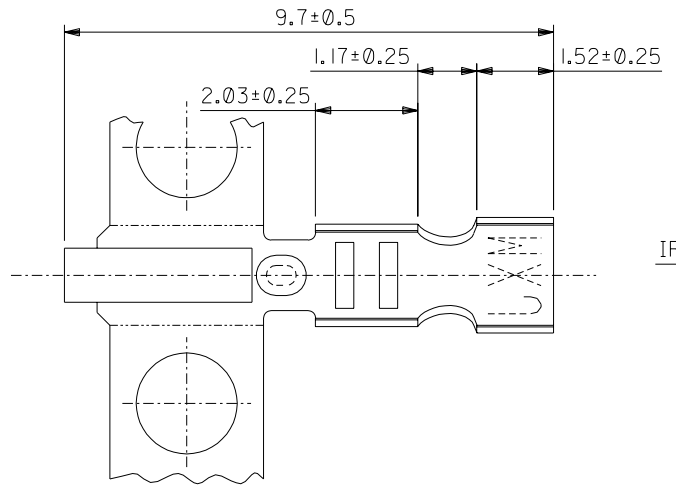
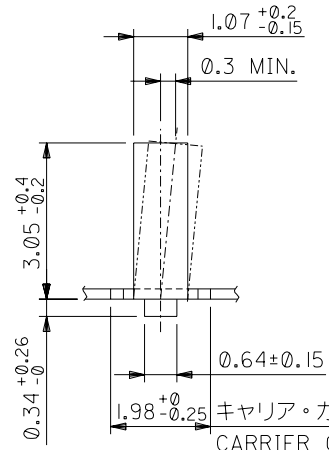
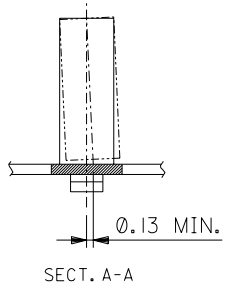
E

D

C

B

A



注) NOTE.
 1. 芯スレ 0.13最大
 DIM 1.98 (+0/-0.25) TO BE SYMMETRICAL
 WITHIN 0.13 T.I.R

39-00-0381	2759PBGL	バラ状 LOOSE	ニ:2.0UMIN.	リン 青銅 PHOS BRO.
39-00-0380	PBG	連鎖状 CHAIN	AU:0.35UMIN.	
39-00-0379	G5L	バラ状 LOOSE	ニ:2.0UMIN.	黄銅 BRASS
39-00-0378	G5	連鎖状 CHAIN	AU:0.5UMIN.	
39-00-0377	GL	バラ状 LOOSE	ニ:2.0UMIN.	黄銅 BRASS
39-00-0376	2759G	連鎖状 CHAIN	AU:0.35UMIN.	
EDP.NO.	ENG.NO.	端子形状 FORM	メッキ仕様 FINISH	材質 MATL

図番 NO. DRWN: CH'K: APPR: 図番 NO. DRWN: CH'K: APPR: 図番 NO. DRWN: CH'K: APPR: 図番 NO. DRWN: CH'K: APPR: 図番 NO. DRWN: CH'K: APPR:	REVISED 図番 NO. J2004-3591 DRWN: A.IDA CH'K: H.TAKASE APPR: YO.IITO REVISED 図番 NO. J2002-2529 DRWN: T.ASAKAWA CH'K: K.ASAKAWA APPR: T.YAMAGUCHI REDRAWN 図番 NO. JC2000-0628 DRWN: K.KOHAMA CH'K: T.YAMAGUCHI APPR: M.FUKUSHIMA	MATERIAL 材料 表参照 板厚: 0.203 SEE TABLE 0.203 THK FINISH 仕上げ 表参照 SEE TABLE WIRE RANGE 適用線径範囲 AWG #22-#28 INS. RANGE 被覆外径 φ(1.2)-φ1.7	GENERAL TOLERANCES: (UNLESS SPECIFIED) 一般公差 10 UNDER 未満 ±0.2 10 OVER 30 UNDER 以上 未満 ±0.25 30 OVER 以上 ±0.3 WIRE RANGE 適用線径範囲 AWG #22-#28 ANGLE 角度 ±3°	SCALE 10:1 DESIGN UNITS <input checked="" type="checkbox"/> mm <input type="checkbox"/> INCH DIMENSIONS: <input type="checkbox"/> mm <input type="checkbox"/> INCH <input checked="" type="checkbox"/> mm ONLY <input type="checkbox"/> INCH ONLY SHT REV 22 21 CAD ONLY	DRAWN BY & DATE K.KOHAMA 00/3/28 CHECKED BY & DATE K.ASAKAWA 02/04/08 APPROVED BY & DATE T.YAMAGUCHI 02/04/08 CAD FILENAME S2759.S01	TITLE: MINI. KK. CRIMP TYPE TERM. MOLEX MOLEX INCORPORATED	MATERIAL NO. 2759* DRAWING NO. SD-2759* SHEET NO. 1				
				22888 DRAWING CONTAINS INFORMATION THAT IS PROPRIETARY TO MOLEX INCORPORATED AND SHOULD NOT BE USED WITHOUT WRITTEN PERMISSION.							SIZE B
				EN-02J(097) MXJ-54							S2759.S01

8

7

6

5

4

3

2

EN-02J(097) MXJ-54

S2759.S01