



产品编号 : [503728000](#)

Product Description : 2.00mm Pitch, Micro-Latch Female Crimp Terminal, Tin (Sn) Plating, 22-26 AWG, Reel

系列号 : 50372

状态 : Active

Product Category : Crimp Terminals

Packaging Alternative : 0503728100 (Bag)



文件和资源

图纸

[图纸 503728000_sd.pdf](#)

3D 模型和设计文件

[3D模型 503728000_stp.zip](#)

规格

[应用规格 510900001-000.pdf](#)

[包装规格 SPK-50372-001-001.pdf](#)

[产品规格 510650000-PS-000.pdf](#)

[产品规格 510651000-PS-000.pdf](#)

[产品规格 PS-51089-001-001.pdf](#)

[产品规格 PS-51089-005-001.pdf](#)

[产品规格 PS-51090-004-001.pdf](#)

[产品规格 PS-51090-005-001.pdf](#)

[产品规格 PS-51090-009-001.pdf](#)

[产品规格 PS-51090-016-001.pdf](#)

[产品规格 PS-51090-017-001.pdf](#)

[产品规格 PS-51160-001-001.pdf](#)

[产品规格 PS-51160-006-001.pdf](#)

[产品规格 PS-52968-006-001.pdf](#)

[产品规格 PS-52968-007-001.pdf](#)

[产品规格 PS-53717-002-001.pdf](#)

[产品规格 PS-54111-001-001.pdf](#)

[产品规格 PS-54111-002-001.pdf](#)

[产品规格 PS-54452-006-001.pdf](#)


[产品规格 PS-55533-004-001.pdf](#)

模具规格

[应用模具规格 571753710ATS-000.pdf](#)

产物环境合规

合规

GADSL/IMDS	Compliant with Exemption 44
China RoHS	
EU ELV	Compliant per 2000/53/EC
Low-Halogen Status	Low-Halogen per IEC 61249-2-21
REACH SVHC	Not Contained per D(2023)3788-DC (14 Jun 2023)
EU RoHS	Compliant per EU 2015/863

多部分产品合规性声明

- Eu RoHS
- REACH SVHC
- Low-Halogen

多部分行业合规性文件

- IPC 1752A Class C
- IPC 1752A Class D
- Molex Product Compliance Declaration
- IEC-62474
- chemSHERPA (xml)

欧盟 RoHS 合格证书

产品详情

常规

状态	活动
类别	Crimp Terminals
系列	50372
说明	2.00mm Pitch, Micro-Latch Female Crimp Terminal, Tin (Sn) Plating, 22-26 AWG, Reel
应用	Signal, Wire-to-Board
产品系列	Micro-Latch Wire-to-Board Connector System
产品名称	Mi II, Micro-Latch
UPC	800753576186

电气

每触点最大电流	2.5A
电压 - 最大	250V AC (RMS)/DC

物理

性别	女
材料 - 金属	Phosphor Bronze
材料 - 接合部位电镀	Tin
材料 - 终端电镀	Tin
净重	0.020/g
包装形式	Reel
最薄镀层 - 接合部位	0.900µm
最薄镀层 - 端接	0.900µm
终端界面类型	Crimp or Compression
导线绝缘直径	1.40mm max.
线径规格 (AWG)	22, 24, 26
线缆尺寸mm ²	不适用

可连接使用部件

描述	产品编号
Micro-Latch Single Row Receptacle Housings	<u>51065</u>
Mi II Single Row Crimp Housings	<u>51089</u>
Mi II Single Row Crimp Housings	<u>51090</u>

施工工具

全局

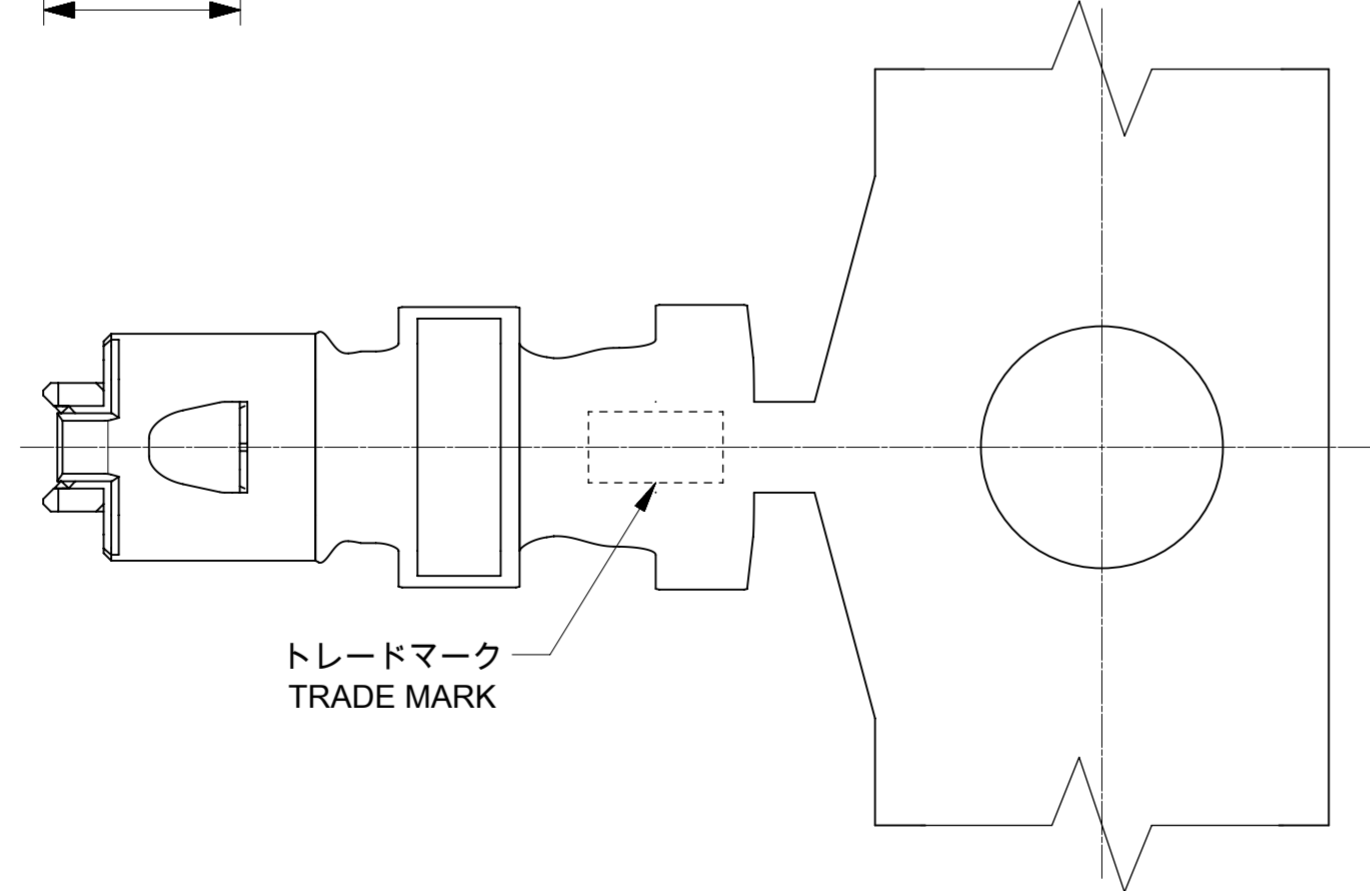
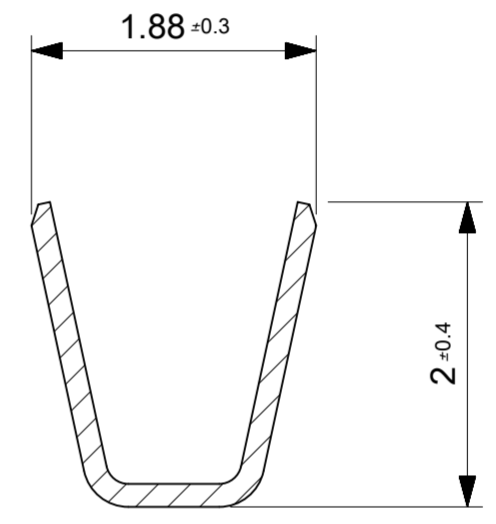
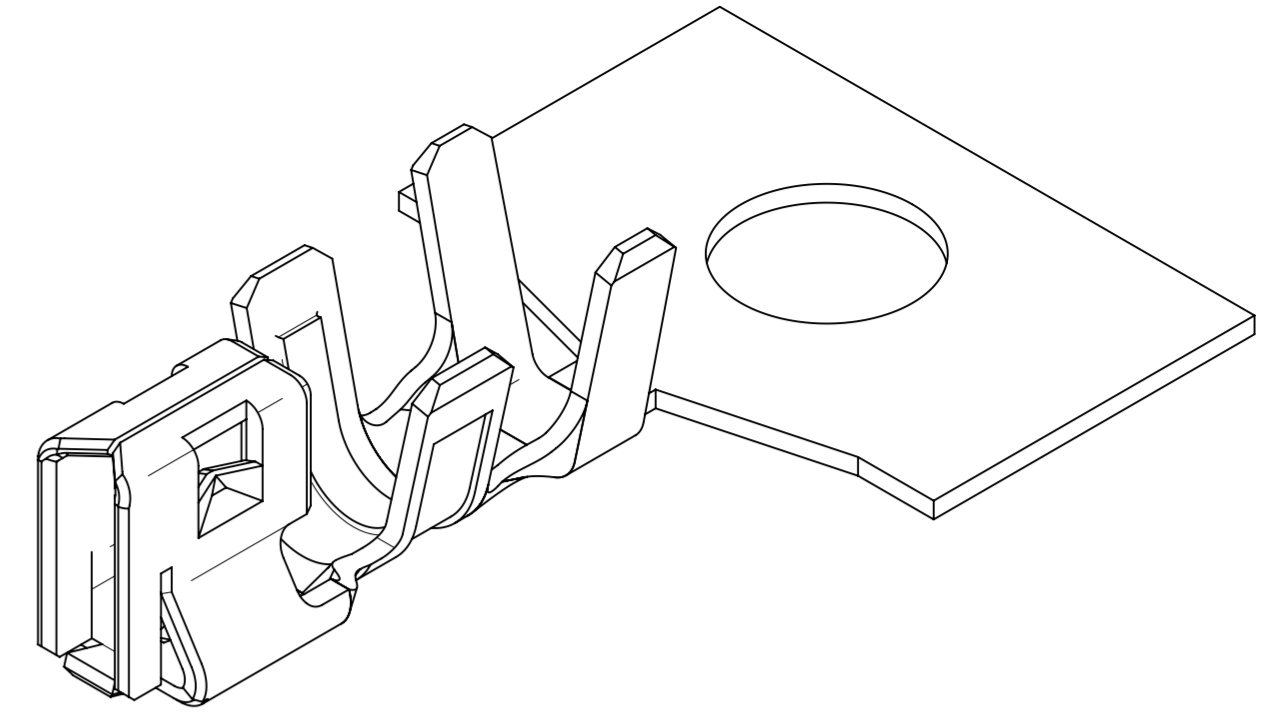
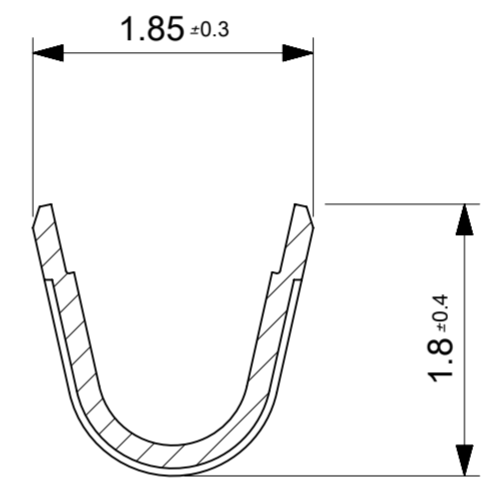
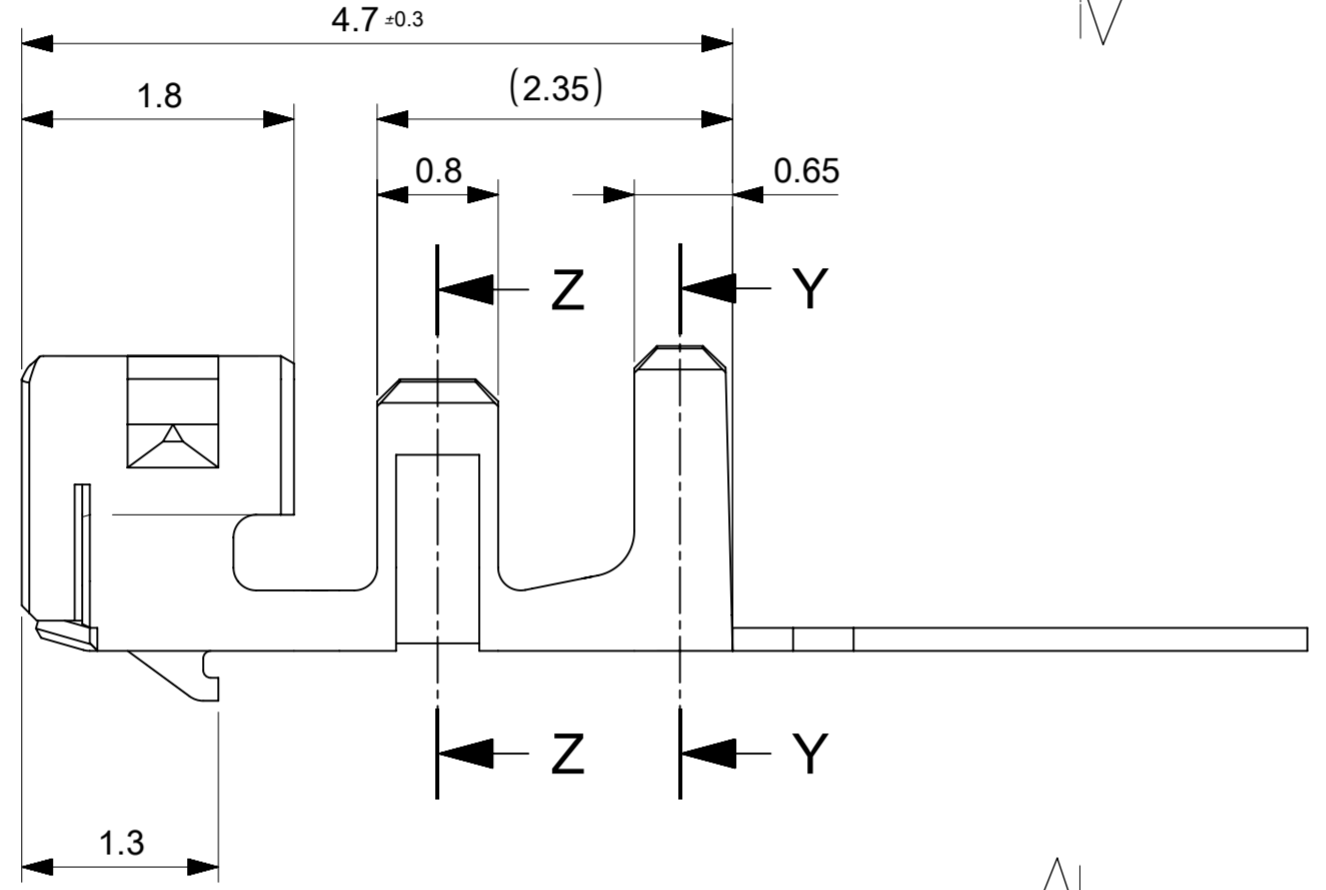
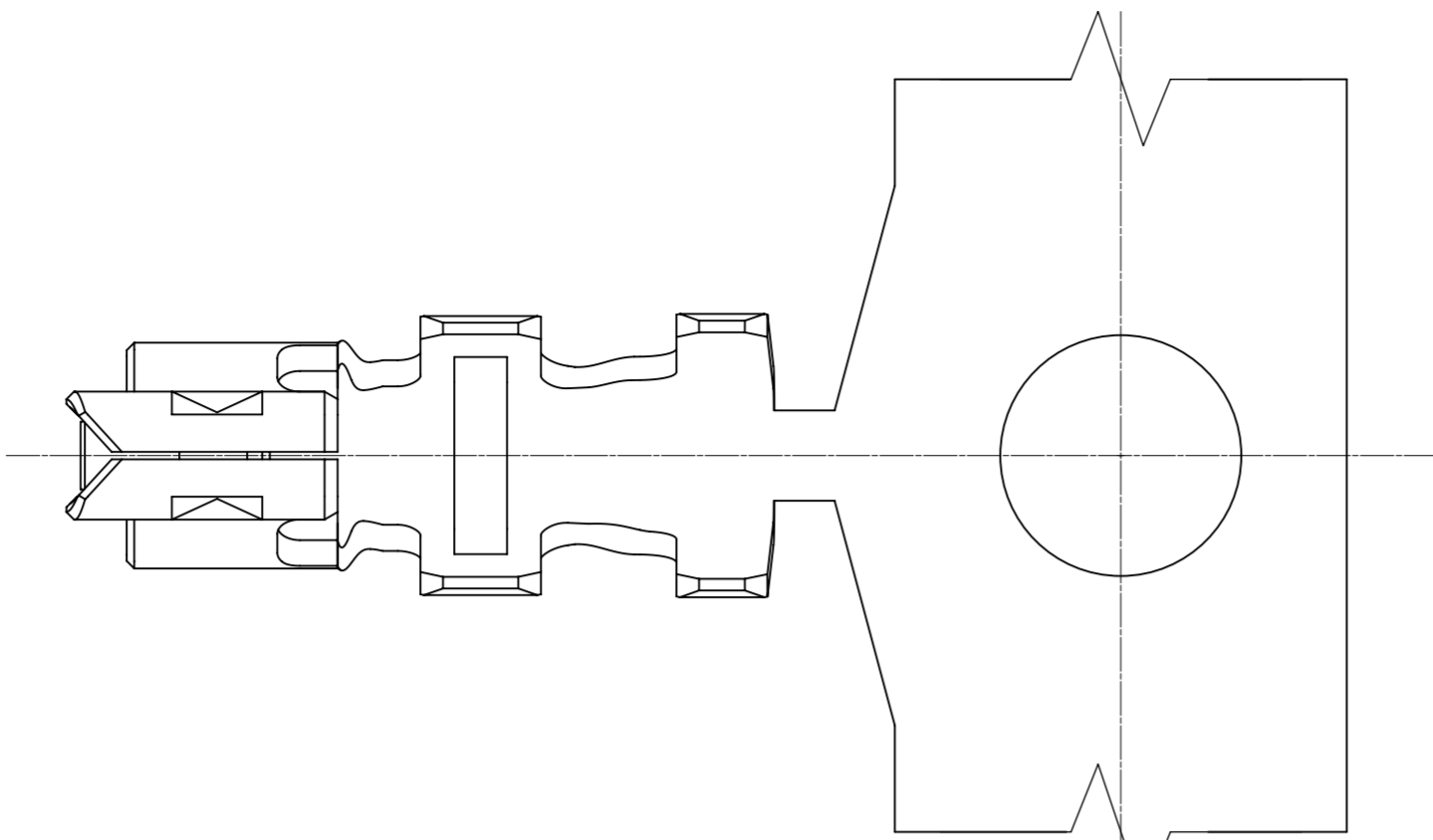
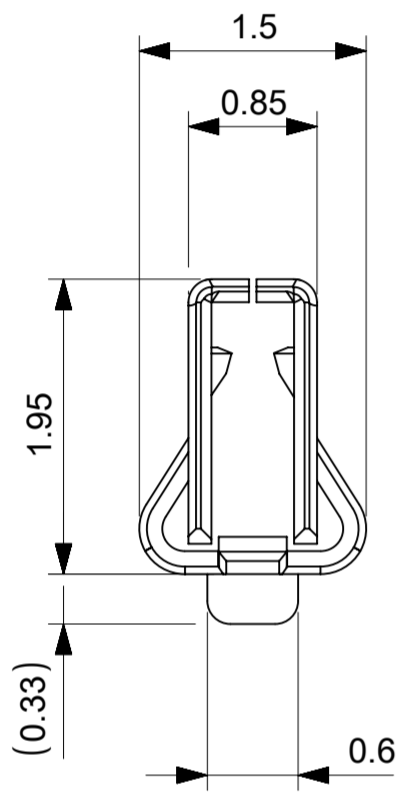
描述	产品编号
Extraction Tool for Micro-Fit Terminals	<u>0011030043</u>
FineAdjust Applicator for 2.00mm Pitch Wire-to-Board Crimp Receptacle Terminal and SMEC Crimp Receptacle Terminals, 22-26 AWG and AVSS 0.3 Wires	<u>2037021900</u>

PremiumGrade Hand Crimp Tool for Micro-Latch, DuraClik, and Servo Motor Encoder Female Terminals, 22-26 AWG	<u>0638235100</u>
T2 Terminator Die	<u>0638528000</u>

施工工具

日本

描述	产品编号
S-1 Applicator for DuraClik and Mi II Terminals, 22-26 AWG	<u>0571753710</u>
Extraction Tool	<u>0573216000</u>



トレードマーク
TRADE MARK

NOTES

- 1. 材料及び仕上げ（めっき仕様）：TABLE 1 参考
MATERIAL AND FINISHES : SEE TABLE 1
- 2. 適用製品及び各種仕様書はSHEET 2をご参照ください。
PLEASE REFER TO SHEET 2 FOR APPLICABLE PRODUCTS AND VARIOUS SPECIFICATIONS.
- 3. 本製品は錫めっき品です。金めっき品は593540000-SD/PSD/000をご参照ください。
THIS PRODUCT IS A TIN PLATING.
PLEASE REFER TO 593540000-SD/PSD/000 FOR GOLD PLATING.

Ø0.95 - Ø1.40	AWG#22-26	ポリ袋 POLY BAG	503728100	バラ状 LOOSE
		リール REEL	503728000	連鎖状 CHAIN
絶縁被覆外径範囲 INS RANGE	連用電線範囲 WIRE RANGE	梱包形態 PACKAGING	発注番号 ENG NO	端子形状 FORM

THIS DRAWING CONTAINS INFORMATION THAT IS PROPRIETARY TO MOLEX ELECTRONIC TECHNOLOGIES, LLC AND SHOULD NOT BE USED WITHOUT WRITTEN PERMISSION

DIMENSION UNITS	SCALE	CURRENT REV DESC: REDRAWN AND REVISED		
mm	NTS	<div style="text-align: center; font-size: 2em; font-weight: bold;">molex</div> <p>MICRO-LATCH 2.0 TIN RECEPTACLE CRIMP TERMINAL</p> <p>PRODUCT CUSTOMER DRAWING</p>		
GENERAL TOLERANCES (UNLESS SPECIFIED)				
ANGULAR TOL	± 3.0°			
4 PLACES	± 0.2			
3 PLACES	± 0.2			
2 PLACES	± 0.2	EC NO: 636761	2019/09/20	
1 PLACE	± 0.2	DRWN: HHUSSIN	2020/04/30	
0 PLACES	± 0.2	CHK'D: SAKIYAMA	2020/05/01	
DRAFT WHERE APPLICABLE MUST REMAIN WITHIN DIMENSIONS		APPR: KOMURAKAMI	2020/05/01	INITIAL REVISION:
		DRWN: HHUSSIN	2019/09/20	DOCUMENT NUMBER
		APPR: KOMURAKAMI	2020/05/01	503720000-SD
THIRD ANGLE PROJECTION	DRAWING	SERIES	MATERIAL NUMBER	CUSTOMER
	A2-SIZE	50372		GENERAL
				DOC TYPE DOC PART REVISION
				PSD 000 A
				SHEET NUMBER
				1 OF 2

TABLE 1

部品 PART	材質 MATERIAL	
ターミナル TERMINAL	MATERIAL	リン青銅 PHOSPHOR BRONZE
	全面めっき OVERALL PLATING	錫めっき : 0.9 micro-meters MIN リフロー処理 (前めっき) REFLOW TREATMENT (PRE-PLATING)

△ 2 適用製品及び各種仕様書
 APPLICABLE PRODUCTS AND VARIOUS SPECIFICATIONS

梱包仕様書 PACKING SPECIFICATION	PART NUMBER		SPECIFICATION NUMBER	
	503728000/8100		SPK-50372-001	
適用ハウジング APPLICABLE HOUSING		SINGLE TYPE		
シリーズ番号 SERIES NO		51065		
適用嵌合相手 MATE WITH	THROUGH HOLE			
	TIN PLATING			
	VERTICAL	RIGHT ANGLE		
シリーズ番号 SERIES NO		53253	53254	
製品仕様書 PRODUCT SPECIFICATION		510650000-PS/PS/000		

製品嵌合図は各"適用嵌合相手"図面参照のこと
 MATING VIEW : REFER TO EACH "MATE WITH" PART DRAWING

THIS DRAWING CONTAINS INFORMATION THAT IS PROPRIETARY TO MOLEX ELECTRONIC TECHNOLOGIES, LLC AND SHOULD NOT BE USED WITHOUT WRITTEN PERMISSION										
DIMENSION UNITS	SCALE	CURRENT REV DESC: REDRAWN AND REVISED				<h1 style="margin: 0;">molex</h1>				
mm	NTS									
GENERAL TOLERANCES (UNLESS SPECIFIED)		EC NO: 636761 DRWN: HHUSSIN 2019/09/20 CHK'D: SAKIYAMA 2020/04/30 APPR: KOMURAKAMI 2020/05/01 INITIAL REVISION: DRWN: HHUSSIN 2019/09/20 APPR: KOMURAKAMI 2020/05/01				MICRO-LATCH 2.0 TIN RECEPTACLE CRIMP TERMINAL				
ANGULAR TOL	± 3.0°					PRODUCT CUSTOMER DRAWING				
4 PLACES	± 0.2					DOCUMENT NUMBER		DOC TYPE	DOC PART	REVISION
3 PLACES	± 0.2					503720000-SD		PSD	000	A
2 PLACES	± 0.2					MATERIAL NUMBER		CUSTOMER		SHEET NUMBER
1 PLACE	± 0.2					50372		GENERAL		2 OF 2
0 PLACES	± 0.2	DRAWING		SERIES		SHEET NUMBER				
DRAFT WHERE APPLICABLE MUST REMAIN WITHIN DIMENSIONS		THIRD ANGLE PROJECTION	DRAWING	SERIES	MATERIAL NUMBER		CUSTOMER		SHEET NUMBER	
			A2-SIZE	50372	3		2		2 OF 2	

DOCUMENT STATUS	P1	RELEASE DATE	2020/05/01	01:51:28
-----------------	----	--------------	------------	----------