



产品编号 : [503978000](#)

Product Description : CP-2.5 Mini and CP-3.3 Crimp Terminal, Female, 22-28 AWG, Reel

系列号 : 50397

状态 : Active

Product Category : Crimp Terminals

Packaging Alternative : 0503978100 (Bag)



---

## 文件和资源

### 图纸

[图纸 503978000\\_sd.pdf](#)

### 3D 模型和设计文件

[3D模型 503978000\\_stp.zip](#)

### 规格

[应用规格 5056050000-A01.pdf](#)

[应用规格 AS-504693-001-001.pdf](#)

[应用规格 AS-504693-002-001.pdf](#)

[应用规格 5056050000-A00.pdf](#)

[包装规格 SPK-50397-001-001.pdf](#)

[产品规格 PS-504693-001-001.pdf](#)

[产品规格 5056050000-000.pdf](#)


[产品规格 PS-51111-001-001.pdf](#)

[产品规格 PS-51111-003-001.pdf](#)

---

## 产物环境合规

### 合规

GADSL/IMDS	Compliant with Exemption 44
China RoHS	
EU ELV	Not Relevant
Low-Halogen Status	Low-Halogen per IEC 61249-2-21
REACH SVHC	Not Contained per D(2023)3788-DC (14 Jun 2023)

EU RoHS	Compliant per EU 2015/863
---------	---------------------------

多部分产品合规性声明

- Eu RoHS
- REACH SVHC
- Low-Halogen

多部分行业合规性文件

- IPC 1752A Class C
- IPC 1752A Class D
- Molex Product Compliance Declaration
- IEC-62474
- chemSHERPA (xml)

欧盟 RoHS 合格证书

**产品详情**

**常规**

状态	活动
类别	Crimp Terminals
系列	50397
说明	CP-2.5 Mini and CP-3.3 Crimp Terminal, Female, 22-28 AWG, Reel
应用	Signal, Wire-to-Wire
产品系列	CP Wire-to-Board and Wire-to-Wire Connector Systems
产品名称	CP-2.5 Mini, CP-3.3
UPC	800754317719

**电气**

每触点最大电流	3.0A
电压 - 最大	300V AC (RMS)/DC

**物理**

性别	女
材料 - 金属	Phosphor Bronze
材料 - 接合部位电镀	Tin
材料 - 终端电镀	Tin
净重	89.600/mg

包装形式	Reel
最薄镀层 - 接合部位	0.914μm
最薄镀层 - 端接	0.914μm
终端界面类型	Crimp or Compression
导线绝缘直径	1.15-1.80mm
线径规格 (AWG)	22, 24, 26, 28
线缆尺寸mm <sup>2</sup>	不适用

## 可连接使用部件

描述	产品编号
CP-2.5 Mini Single Row Receptacle Housings	<u>500592</u>
CP-3.3 Single Row Receptacle Housings	<u>504693</u>
CP-3.3 Dual Row Receptacle Housings	<u>505605</u>

## 施工工具

### 全局

描述	产品编号
Extraction and Activation Tool	<u>0638132700</u>
Extraction Tool for MTC (Multi Terminal Connector) Female Terminal, 14-18 AWG	<u>0638138600</u>
Hand Crimp Tool for 2.50mm Pitch Wire to Wire Crimp Terminals	<u>0638238000</u>
T2 Terminator Die	<u>0638535000</u>
FineAdjust Applicator	<u>0638635000</u>

## 施工工具

### 日本

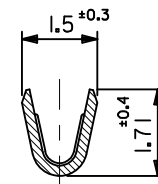
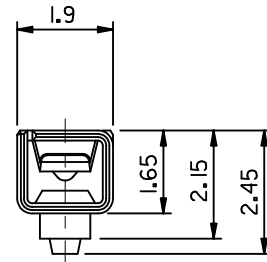
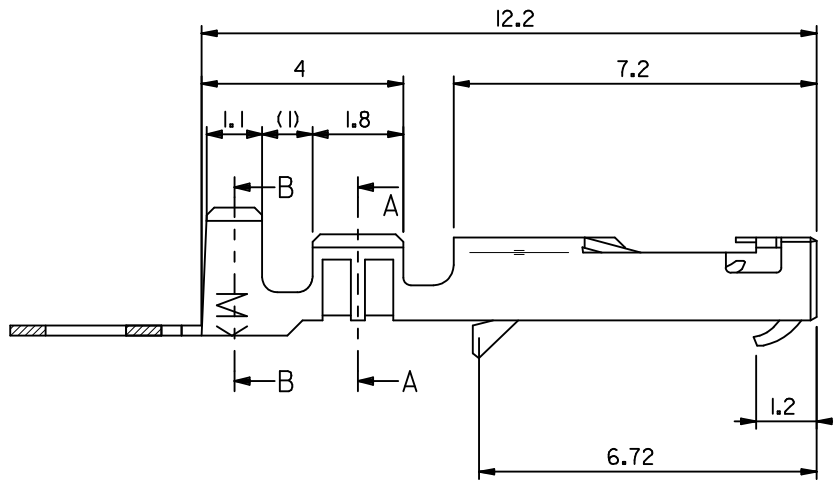
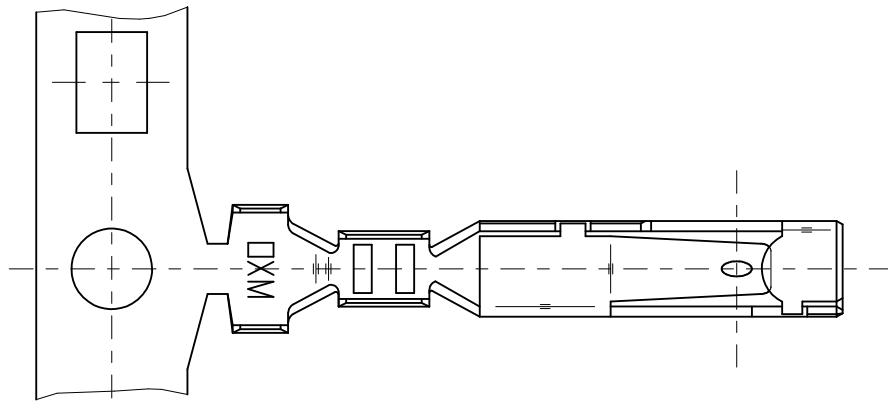
描述	产品编号
S-1 Applicator for CP-3.3 Terminals, 22-28 AWG	<u>0573163700</u>
Extraction Tool	<u>0573166100</u>

---

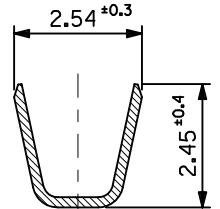
This document was generated on Jan 02, 2024

注記  
NOTES

- 適合ハウジング : 51111 シリーズ  
APPLICABLE HOUSING : 51111 SERIES
- 材料 MATERIAL  
りん青銅 (t = 0.2)  
PHOSPHOR BRONZE  
錫メッキ 0.9 μm 以上 リフロー処理 (前めっき)  
TIN 0.9 μm MIN. REFLOW TREATMENT (PRE-PLATED)
- 適用電線サイズ AWG #22-28  
被覆外径 : 1.15~1.8mm
- ELV及びRoHS 適合品  
ELV AND RoHS COMPLIANT



断面 A-A  
SECT. A-A



断面 B-B  
SECT. B-B

PLASTIC BAG	50397-8100	バラ状 LOOSE
REEL	50397-8000	連鎖状 CHAIN
PACKAGING SPEC.	オーダー番号 ORDER NO.	形態 FORM
CONNECTOR SERIES NO. 50397-8*00		

RELEASED EC NO: J2010-1818 DRWN: NYOSHIKAWA 2010/03/10 CHKD: KASAKAWA 2010/03/10 APPR: NUKITA 2010/03/11	GENERAL TOLERANCES (UNLESS SPECIFIED)		DIMENSION STYLE MM ONLY		SCALE ---	DESIGN UNITS METRIC	THIRD ANGLE PROJECTION
	10 UNDER	±0.2	DRAWN BY NYOSHIKAWA	DATE 2010/03/10	TITLE 2.5 WIRE TO WIRE CONN. CRIMP RECEPTACLE		
	10 OVER 30 UNDER	±0.25	CHECKED BY KASAKAWA	DATE 2010/03/10	MOLEX INCORPORATED		
	30 OVER	±0.3	APPROVED BY NUKITA	DATE 2010/03/10	DOCUMENT NO. SD-50397-001		
	ANGULAR ±3 °	MATERIAL NO. SEE TABLE		SHEET NO. 1 OF 1			
	DRAFT WHERE APPLICABLE MUST REMAIN WITHIN DIMENSIONS	THIS DRAWING CONTAINS INFORMATION THAT IS PROPRIETARY TO MOLEX INCORPORATED AND SHOULD NOT BE USED WITHOUT WRITTEN PERMISSION					