



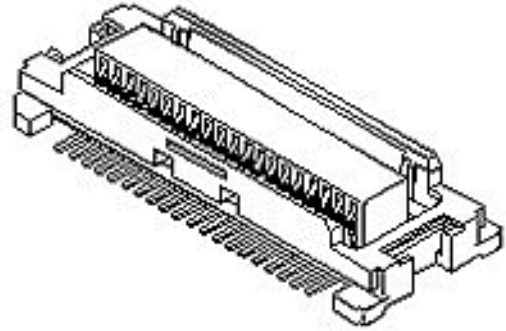
产品编号 : [541670408](#)

Product Description : 0.50mm Pitch SlimStack Receptacle, Surface Mount, Dual Row, Vertical, 3.00 and 4.00mm Stacking Heights, Lower Circuit Size Version, Black, 40 Circuits

系列号 : 54167

状态 : Obsolete

Product Category : Board-to-Board Connectors



文件和资源

产物环境合规

合规

GADSL/IMDS	Not Relevant
China RoHS	
EU ELV	Not Relevant
Low-Halogen Status	Low-Halogen per IEC 61249-2-21
REACH SVHC	Not Contained per D(2023)3788-DC (14 Jun 2023)
EU RoHS	Compliant per EU 2015/863

多部分产品合规性声明

- Eu RoHS
- REACH SVHC
- Low-Halogen

多部分行业合规性文件

- IPC 1752A Class C
- IPC 1752A Class D
- Molex Product Compliance Declaration
- IEC-62474
- chemSHERPA (xml)

欧盟 RoHS 合格证书

产品详情

常规

状态	Obsolete
类别	Board-to-Board Connectors
系列	54167
说明	0.50mm Pitch SlimStack Receptacle, Surface Mount, Dual Row, Vertical, 3.00 and 4.00mm Stacking Heights, Lower Circuit Size Version, Black, 40 Circuits
应用	Board-to-Board, Signal
元件类型	PCB Receptacle
产品系列	SlimStack Board-to-Board/Board-to-FPC Connectors
产品名称	SlimStack
UPC	800753501607

电气

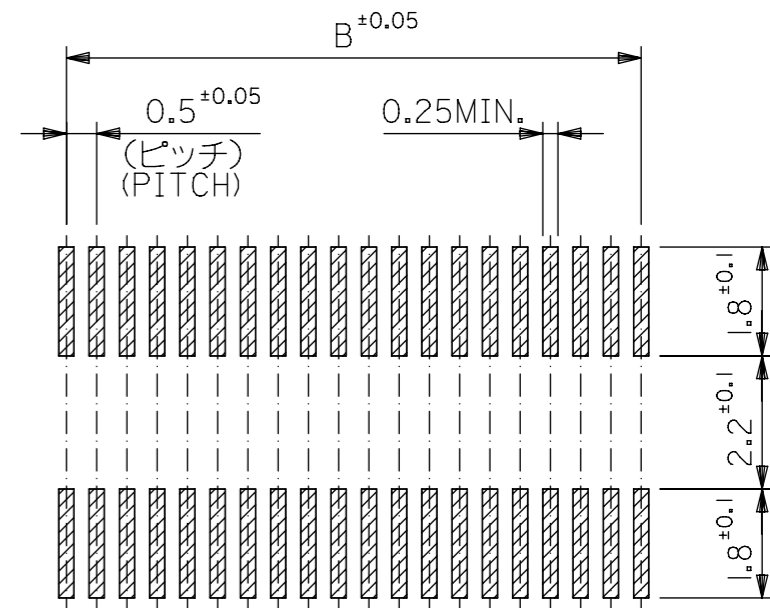
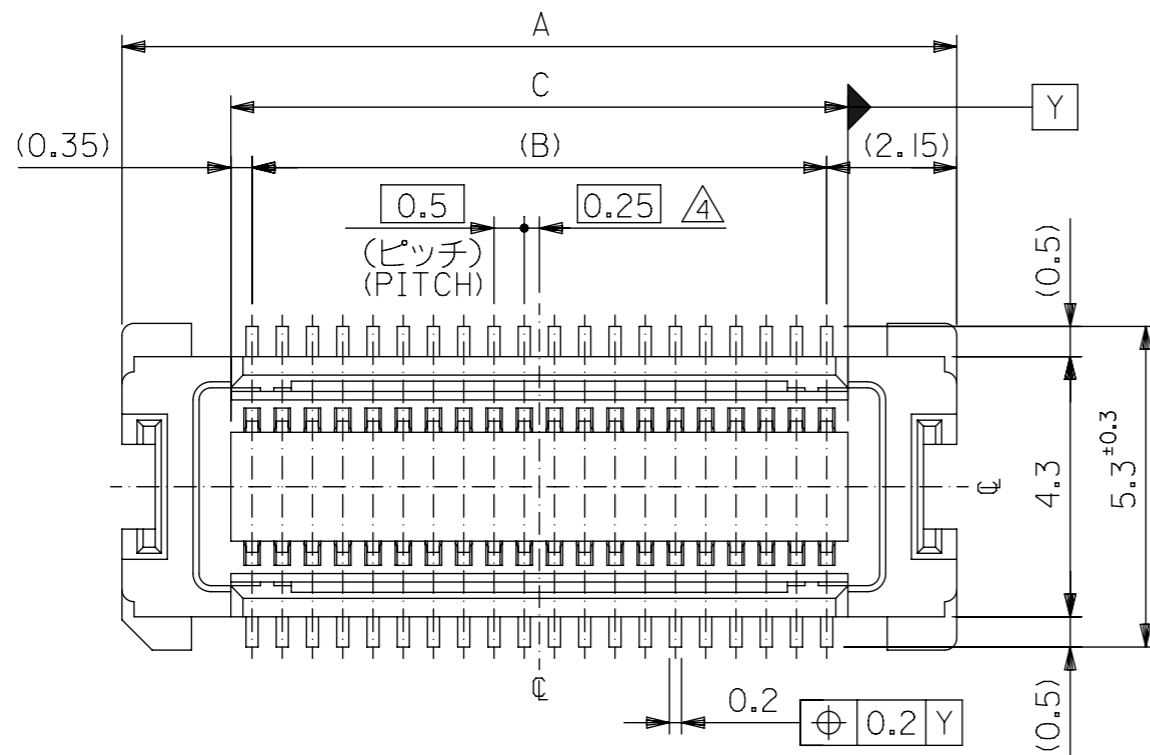
每触点最大电流	0.5A
电压 - 最大	50V

物理

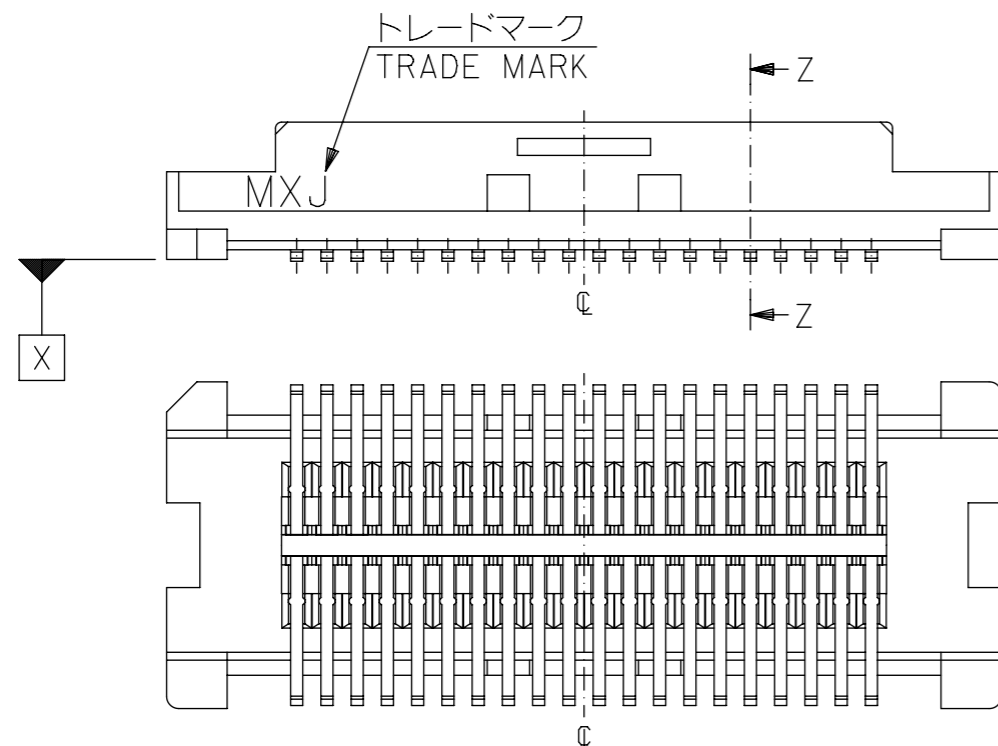
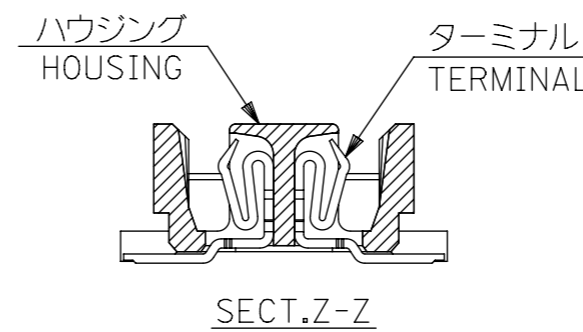
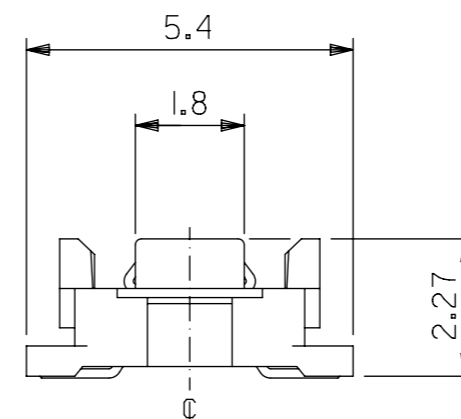
回路数 (已载入)	40
电路数 (最多)	40
符合灼热丝规范	否
插配长度	3.00mm, 4.00mm
插配宽度	5.40mm
材料 - 接合部位电镀	金牌
材料 - 终端电镀	金牌
净重	158.301/mg
行数	2
方向	垂直
包装形式	Embossed Tape on Reel
PCB 定位器	否
PCB 保持力	无
推荐的 PCB 厚度	1.60mm
间距 - 插配接口	0.50mm

最薄镀层 - 接合部位	0.102 μ m
最薄镀层 - 端接	0.254 μ m
PCB 极性	否
运行温度范围	-40° to +105° C
终端界面类型	Surface Mount

This document was generated on Dec 29, 2023



参考基板レイアウト (マウント面)
P.C.BOARD PATTERN
DIMENSION. (REF.)
(MOUNTING AREA)



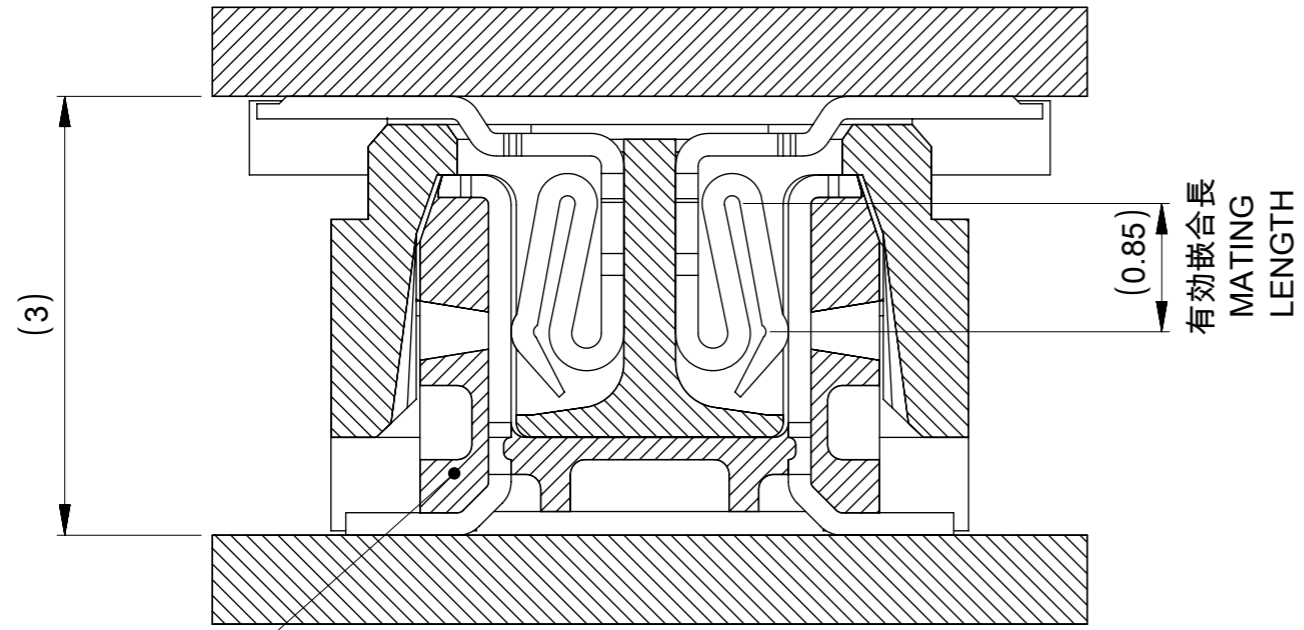
注記 NOTES:

1. 使用材料 MATERIAL
ハウジング : LCPガラス入り (黒), UL94V-0
HOUSING : LCP(G.F.)(COLOR:BLACK), UL94V-0
ターミナル : リン青銅 (t=0.15)
TERMINAL : PHOSPHOR BRONZE (t=0.15)
2. メッキ仕様 PLATING
全体仕上げ : 金メッキ 0.1 MICROMETER MIN.
ALL OVER : GOLD 0.1 MICROMETER MIN.
下地メッキ : ニッケルメッキ 1.5 MICROMETER MIN.
UNDER PLATING : NICKEL 1.5 MICROMETER MIN.
3. 基準面 X からのソルダーテールの半田付け面のズレ量は、上方向 0 下方向 0.15MAX. とする。
MISALIGNMENT OF SOLDER TAIL FROM X
: UPPER DIRECTION 0. LOWER DIRECTION 0.15 MAX.
△ (全極数/2) = 偶数の場合に適用。
APPLY FOR (CIRCUIT/2)=EVEN.

5. 嵌合相手 : 53748シリーズ (嵌合高さ = 3mm)、53916シリーズ (嵌合高さ = 4mm)、501920シリーズ (嵌合高さ = 4mm)
MATE WITH: 53748 SERIES (HEIGHT = 3mm), 53916 SERIES (HEIGHT = 4mm), AND 501920 SERIES (HEIGHT = 4mm)
6. テール平坦度は、0.1MAX.
TAIL COPLANARITY TO BE 0.1MAX.

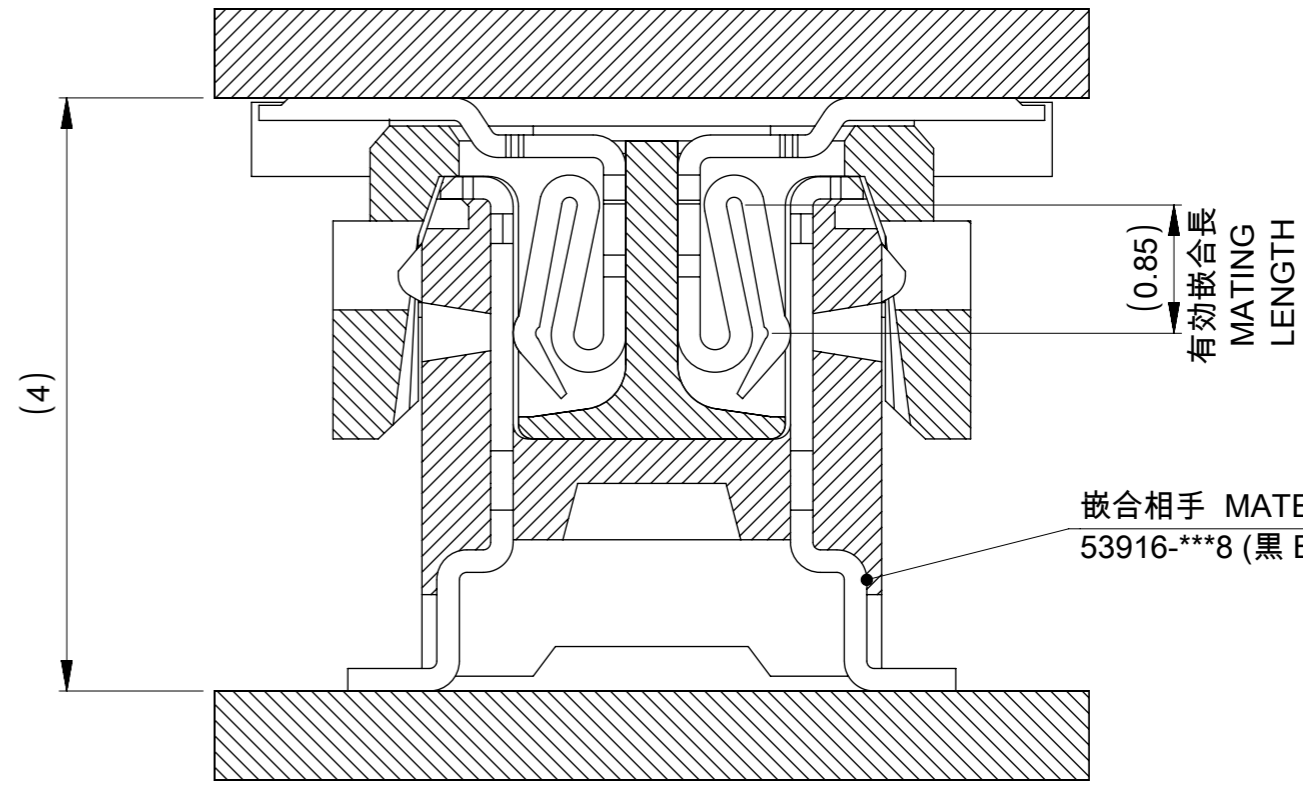
12.7	12.0	16.3	54167-0508	50
10.2	9.5	13.8	54167-0408	40
7.7	7.0	11.3	54167-0308	30
5.2	4.5	8.8	54167-0208	20
C	B	A	EMBOSSED TAPE	極数
			ORDER No.	CIRCUIT
CONNECTOR SERIES No.			54167-***1	

THIS DRAWING CONTAINS INFORMATION THAT IS PROPRIETARY TO MOLEX ELECTRONIC TECHNOLOGIES, LLC AND SHOULD NOT BE USED WITHOUT WRITTEN PERMISSION		CURRENT REV DESC: REVISED		molex	
DIMENSION UNITS	SCALE	EC NO: 642297			
mm	8:1	DRWN: SUDAYGUNAGI		PRODUCT CUSTOMER DRAWING	
GENERAL TOLERANCES (UNLESS SPECIFIED)		CHK'D: HSHIMYOYAMA		DOCUMENT NUMBER	
ANGULAR TOL ± 30°		APPR: SHOSHIKAWA		DOC TYPE DOC PART REVISION	
4 PLACES ± 0.2		INITIAL REVISION:		SD-54167-001	
3 PLACES ± 0.25		DRWN: NAIDA		PSD 001 F	
2 PLACES ± 0.3		APPR: NUKITA		MATERIAL NUMBER	
1 PLACE ±		THIRD ANGLE PROJECTION		CUSTOMER	
0 PLACES ±		DRAWING		GENERAL	
DRAFT WHERE APPLICABLE MUST REMAIN WITHIN DIMENSIONS		SERIES		SHEET NUMBER	
DRAFT WHERE APPLICABLE MUST REMAIN WITHIN DIMENSIONS		A3-SIZE		1 OF 2	
		54167		SEE TABLE	



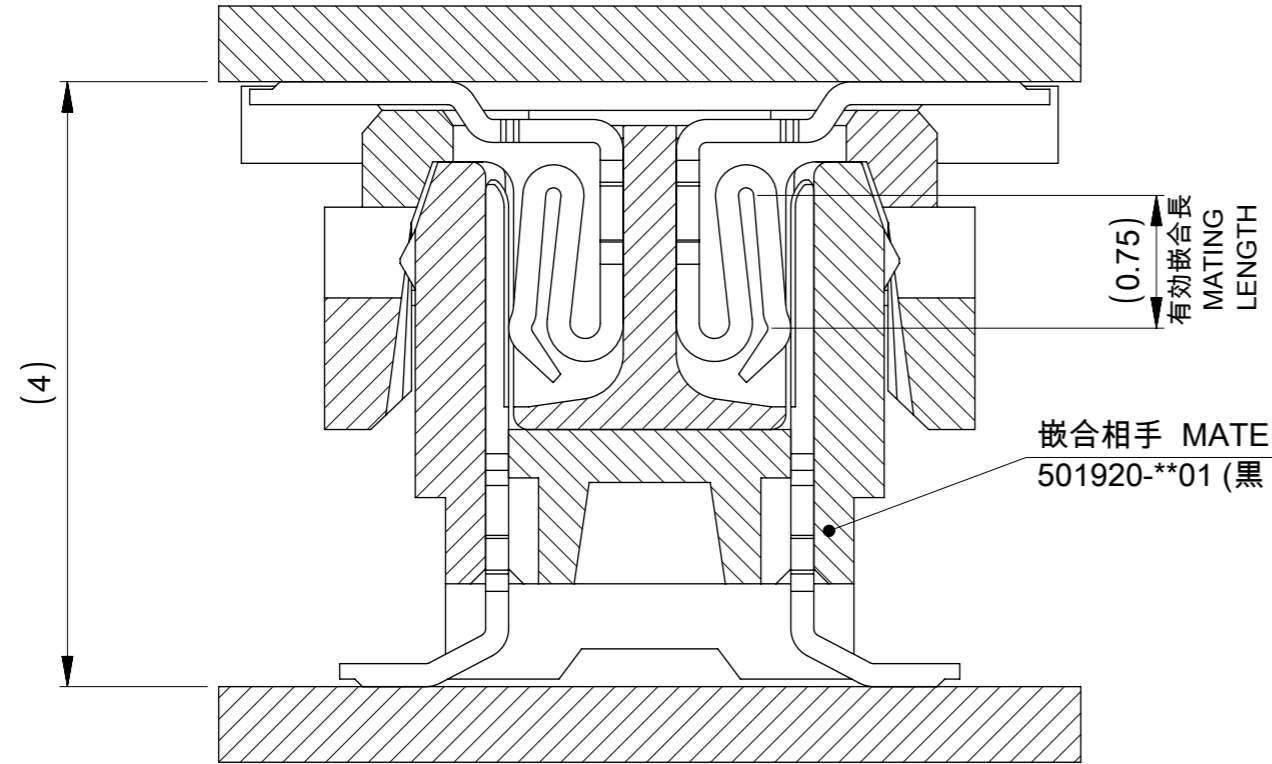
嵌合相手 MATE WITH
53748-***8 (白 WHITE)
53748-***4 (白 WHITE)

嵌合断面図 (参考)
MATED DRAWING (REF.)



嵌合相手 MATE WITH
53916-***8 (黒 BLACK)

嵌合断面図 (参考)
MATED DRAWING (REF.)

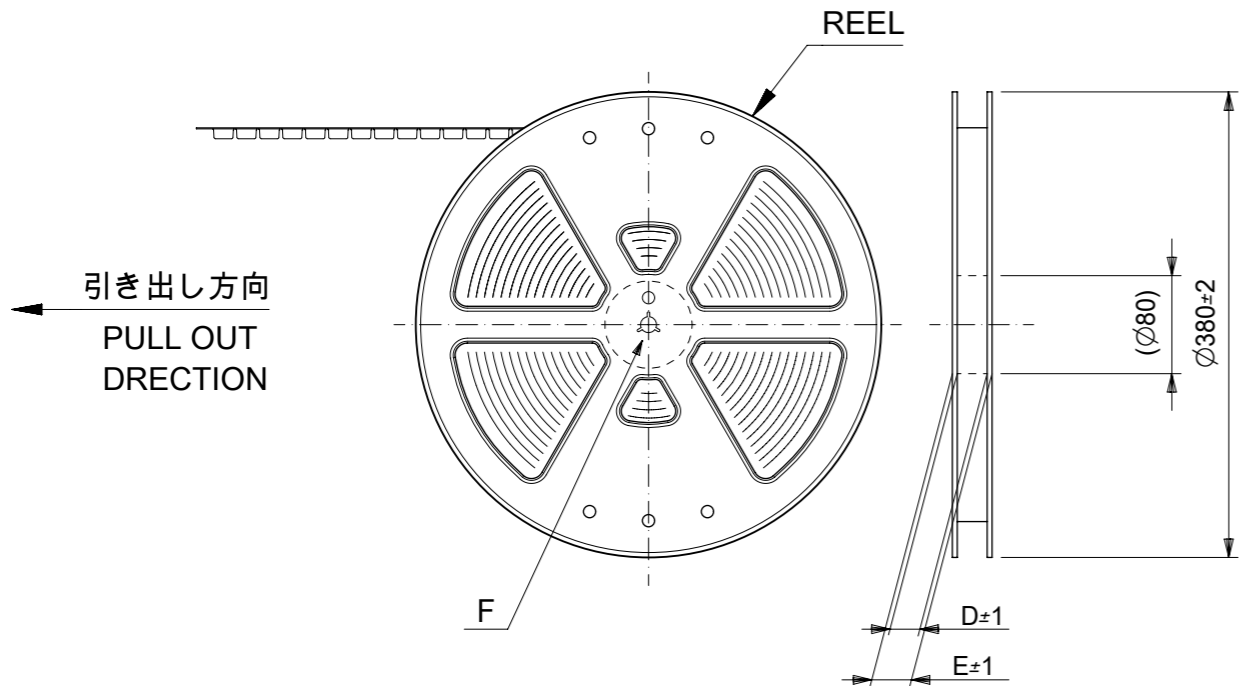


嵌合相手 MATE WITH
501920-**01 (黒 BLACK)

嵌合断面図 (参考)
MATED DRAWING (REF.)

THIS DRAWING CONTAINS INFORMATION THAT IS PROPRIETARY TO MOLEX ELECTRONIC TECHNOLOGIES, LLC AND SHOULD NOT BE USED WITHOUT WRITTEN PERMISSION

DIMENSION UNITS		SCALE		CURRENT REV DESC: REVISED		molex	
mm		20:1					
GENERAL TOLERANCES (UNLESS SPECIFIED)				GENERAL TOLERANCES (UNLESS SPECIFIED)			
ANGULAR TOL		± 30°		EC NO: 642297		2020/08/20	
4 PLACES		± 0.2		DRWN: SUDAYGUNAGI		2020/11/30	
3 PLACES		± 0.25		CHK'D: HSHIMUYAMA		2020/11/30	
2 PLACES		± 0.3		APPR: SHOSHIKAWA		2020/11/30	
1 PLACE		±		INITIAL REVISION:			
0 PLACES		±		DRWN: NAIDA		2005/08/31	
				APPR: NUKITA		2005/09/09	
DRAFT WHERE APPLICABLE MUST REMAIN WITHIN DIMENSIONS		DRAFT WHERE APPLICABLE MUST REMAIN WITHIN DIMENSIONS		THIRD ANGLE PROJECTION		DRAWING	
				A3-SIZE		SERIES	
				54167		MATERIAL NUMBER	
				SEE SHEET 1		CUSTOMER	
				GENERAL		SHEET NUMBER	
				2 OF 2			

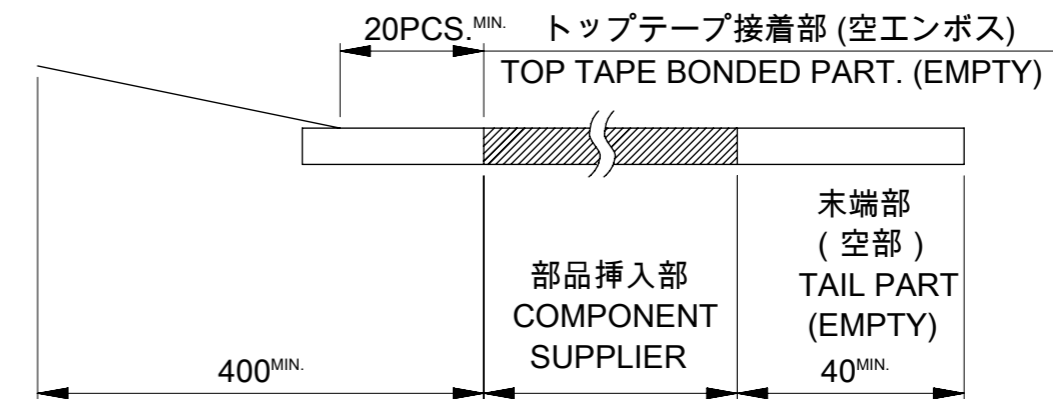


引き出し方向
PULL OUT
DIRECTION

引き出し方向
PULL OUT
DIRECTION

NOTES

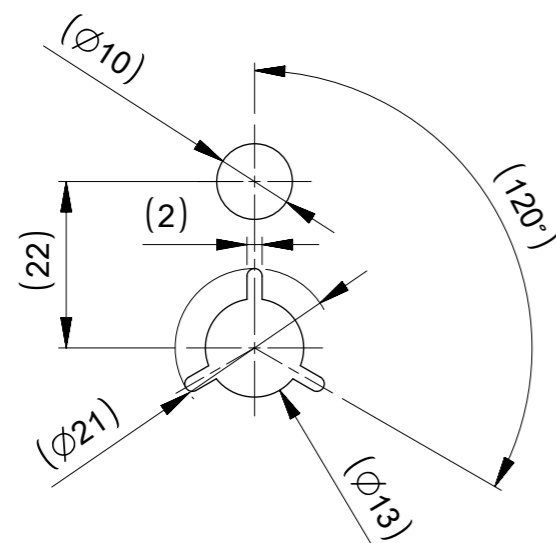
- 製品詳細寸法については図面 SD-54167-001を参照下さい。
DETAIL DIMENSION, SEE SD-54167-001
- 梱包数量 : 3000個 / リール
NUMBER OF CONNECTORS : 3000PCS/REEL
- リードテープ長さ LEAD TAPE LENGTH



- カバートープの剥離強度については、IEC60286-3に準拠
COVER TAPE PEEL FORCE IS DEFINED BY IEC60286-3.

5. 材料 (MATERIAL)

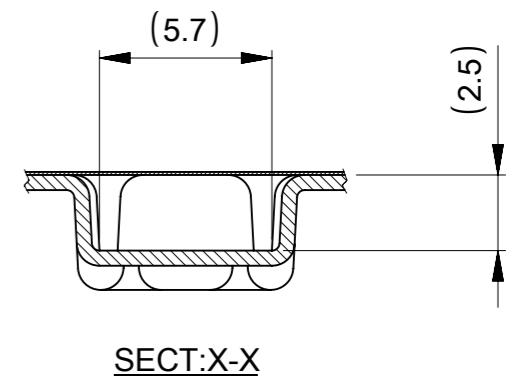
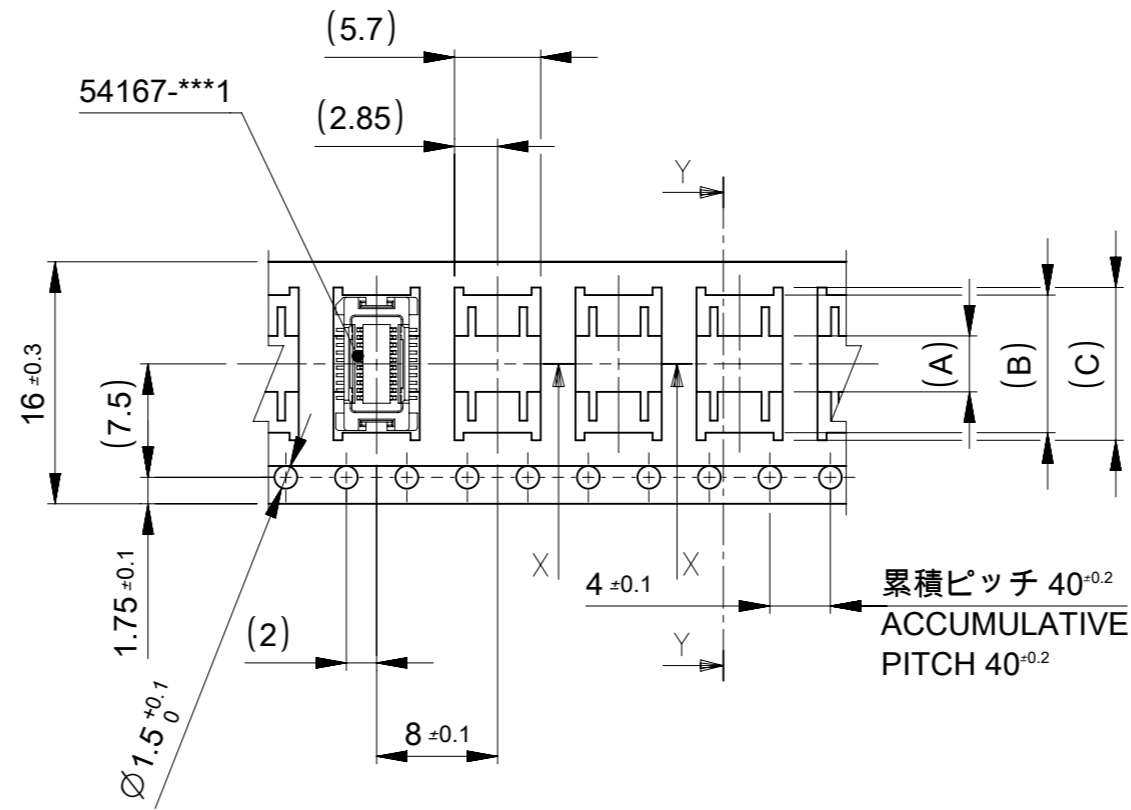
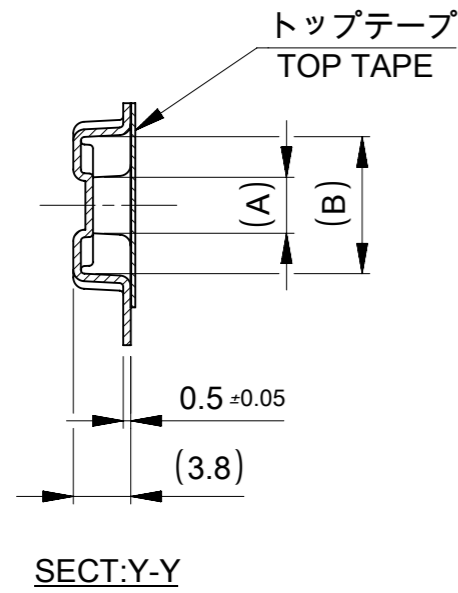
キャリアテープ (CARRIER TAPE) : ポリプロピレン (POLYPROPYLENE)
 トップテープ (TOPTAPE) : PET , PE , PEF
 リール(REEL) : ポリスチレン (PS) <リサイクル材を含む>
 POLYSTYREN(PS) <RECYCLE MATERIAL CONTAINED>



DETAIL "F"

THIS DRAWING CONTAINS INFORMATION THAT IS PROPRIETARY TO MOLEX ELECTRONIC TECHNOLOGIES, LLC AND SHOULD NOT BE USED WITHOUT WRITTEN PERMISSION		CURRENT REV DESC: REVISED		molex	
DIMENSION UNITS	SCALE				
mm	NTS			PRODUCT CUSTOMER DRAWING	
GENERAL TOLERANCES (UNLESS SPECIFIED)		GENERAL TOLERANCES (UNLESS SPECIFIED)		DOCUMENT NUMBER	
ANGULAR TOL ± 3.0°		ANGULAR TOL ± 3.0°		SD-54167-002	
4 PLACES ±		4 PLACES ±		DOC TYPE DOC PART REVISION	
3 PLACES ±		3 PLACES ±		PSD 001 G	
2 PLACES ±		2 PLACES ±		DOCUMENT NUMBER	
1 PLACE ±		1 PLACE ±		SD-54167-002	
0 PLACES ±		0 PLACES ±		DOC TYPE DOC PART REVISION	
GENERAL TOLERANCES (UNLESS SPECIFIED)		GENERAL TOLERANCES (UNLESS SPECIFIED)		SERIES	
10 UNDER	±0.2	10 UNDER		54167	
10 OVER 30 UNDER	±0.25	10 OVER 30 UNDER		MATERIAL NUMBER	
30 OVER	±0.3	30 OVER		SEE SHEET 2-4	
ANGULAR ±3°		ANGULAR ±3°		CUSTOMER	
DRAFT WHERE APPLICABLE MUST REMAIN WITHIN DIMENSIONS		DRAFT WHERE APPLICABLE MUST REMAIN WITHIN DIMENSIONS		GENERAL	
THIRD ANGLE PROJECTION		THIRD ANGLE PROJECTION		SHEET NUMBER	
DRAWING		DRAWING		1 OF 4	
A3-SIZE		A3-SIZE			

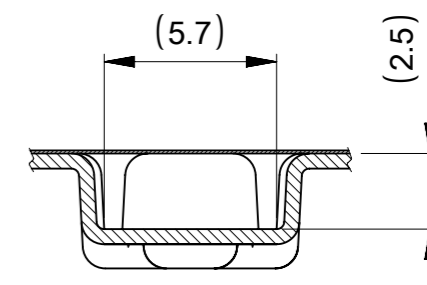
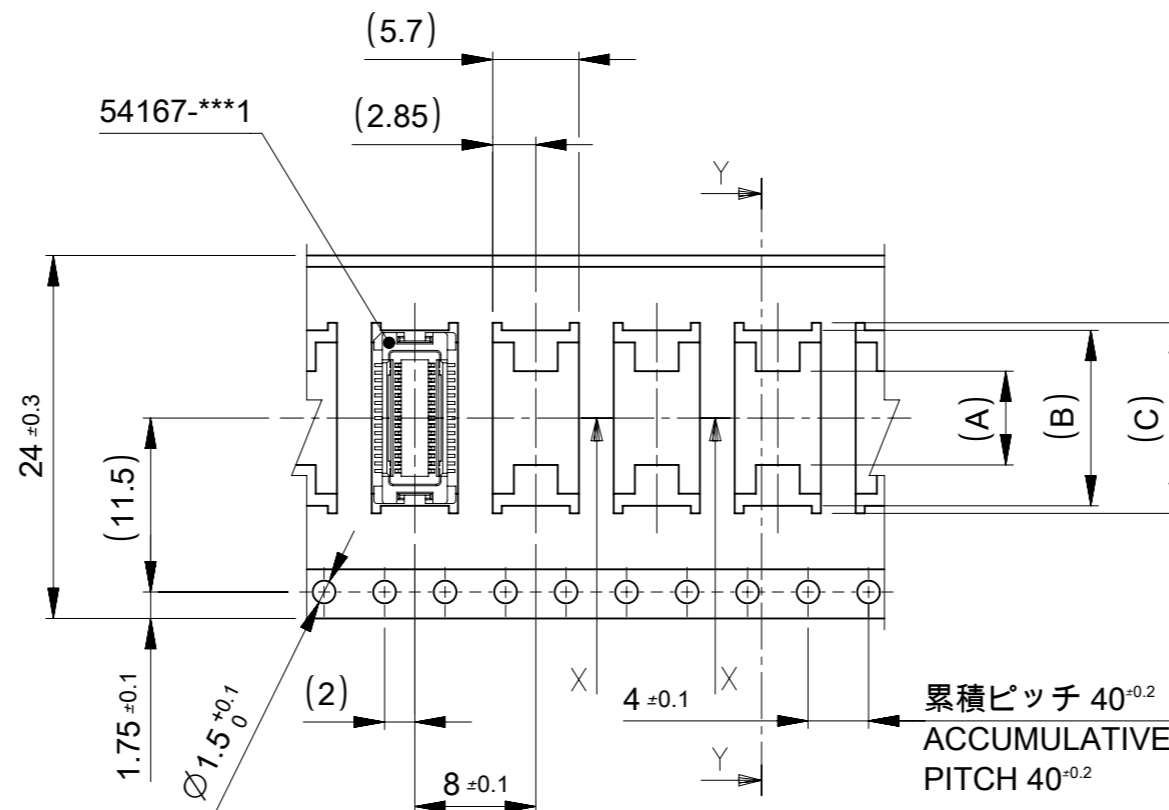
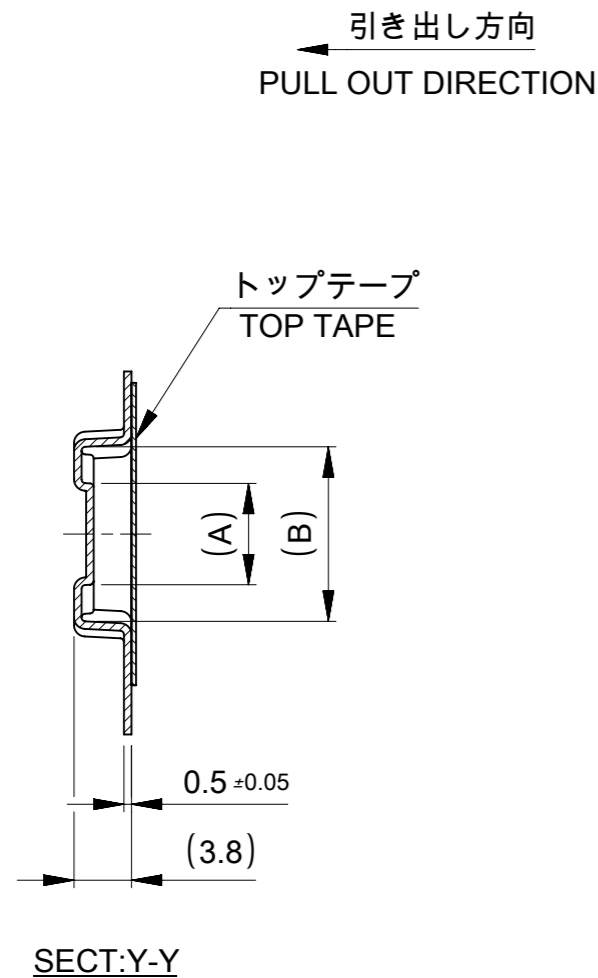
引き出し方向
PULL OUT DIRECTION



16mm 幅キャリアテープ
16mm WIDTH CARRIER TAPE

16	21.4	17.4	10.1	9.1	3.7	54167-0208	20
キャリアテープ幅 CARRIER TAPE WIDTH	E	D	(C)	(B)	(A)	MATERIAL NO.	極数 CKT.

THIS DRAWING CONTAINS INFORMATION THAT IS PROPRIETARY TO MOLEX ELECTRONIC TECHNOLOGIES, LLC AND SHOULD NOT BE USED WITHOUT WRITTEN PERMISSION		CURRENT REV DESC: REVISED		molex			
DIMENSION UNITS mm	SCALE NTS	GENERAL TOLERANCES (UNLESS SPECIFIED)					
GENERAL TOLERANCES (UNLESS SPECIFIED)		ANGULAR TOL ± 3.0°		PRODUCT CUSTOMER DRAWING			
10 ^{UNDER}	±0.2	4 PLACES	±	EC NO: 649457		DOCUMENT NUMBER	
10 ^{OVER} 30 ^{UNDER}	±0.25	3 PLACES	±	DRWN: SUDAYGUNAGI 2020/08/21		SD-54167-002	
30 ^{OVER}	±0.3	2 PLACES	±	CHK'D: HSHIMOYAMA 2020/12/02		DOC TYPE DOC PART REVISION	
ANGULAR ±3°		1 PLACE	±	APPR: SHOSHIKAWA 2020/12/02		PSD 001 G	
DRAFT WHERE APPLICABLE MUST REMAIN WITHIN DIMENSIONS	DRAFT WHERE APPLICABLE MUST REMAIN WITHIN DIMENSIONS	0 PLACES	±	INITIAL REVISION:		SHEET NUMBER	
				DRWN: NAIDA 2005/08/31		2 OF 4	
				APPR: NUKITA 2005/09/09			
				THIRD ANGLE PROJECTION	DRAWING	SERIES	MATERIAL NUMBER
					A3-SIZE	54167	SEE TABLE
							CUSTOMER
							GENERAL



24mm 幅キャリアテープ
24mm WIDTH CARRIER TAPE

24	29.4	25.4	15.1	14.1	7.4	54167-0408	40
			12.6	11.6	4.9	54167-0308	30
キャリアテープ幅 CARRIER TAPE WIDTH	E	D	(C)	(B)	(A)	MATERIAL NO.	極数 CKT.

THIS DRAWING CONTAINS INFORMATION THAT IS PROPRIETARY TO MOLEX ELECTRONIC TECHNOLOGIES, LLC AND SHOULD NOT BE USED WITHOUT WRITTEN PERMISSION

mm NTS SCALE

GENERAL TOLERANCES (UNLESS SPECIFIED)

10 ^{UNDER}	±0.2
10 ^{OVER} 30 ^{UNDER}	±0.25
30 ^{OVER}	±0.3
ANGULAR ±3°	±

ANGULAR TOL ± 3.0°

4 PLACES ±

3 PLACES ±

2 PLACES ±

1 PLACE ±

0 PLACES ±

DRAFT WHERE APPLICABLE MUST REMAIN WITHIN DIMENSIONS

THIRD ANGLE PROJECTION

DRAWING A3-SIZE

SERIES 54167

MATERIAL NUMBER SEE TABLE

CUSTOMER GENERAL

SHEET NUMBER 3 OF 4

EC NO: 649457
DRWN: SUDAYGUNAGI 2020/08/21
CHK'D: HSHIMYOYAMA 2020/12/02
APPR: SHOSHIKAWA 2020/12/02

INITIAL REVISION:
DRWN: NAIDA 2005/08/31
APPR: NUKITA 2005/09/09

DOCUMENT NUMBER SD-54167-002

DOC TYPE PSD

DOC PART 001

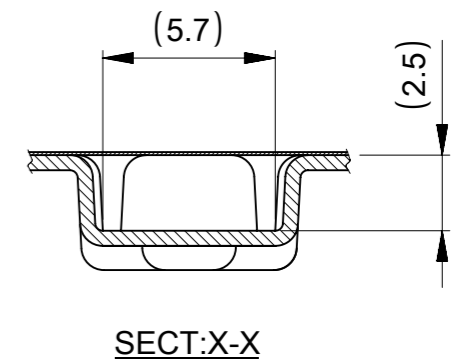
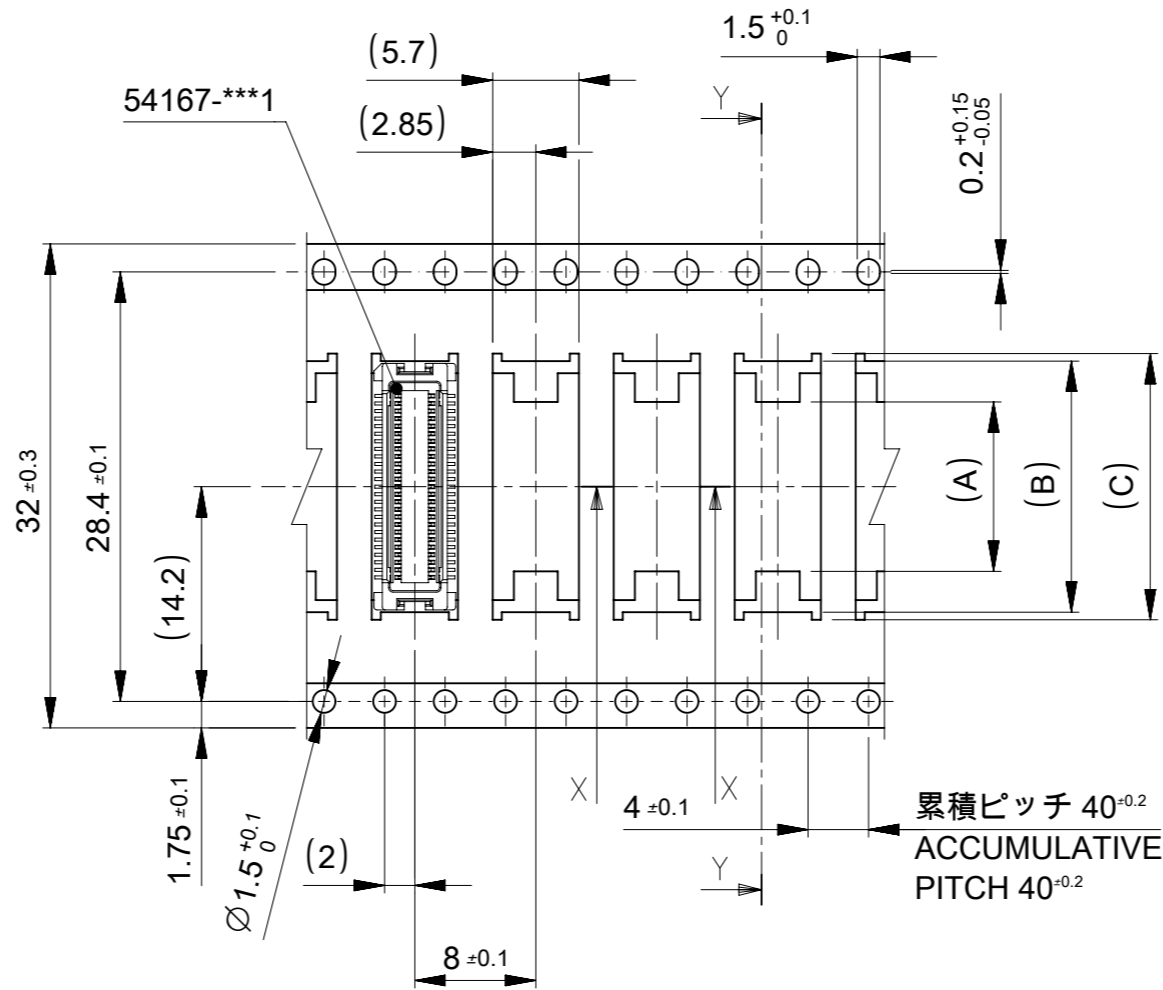
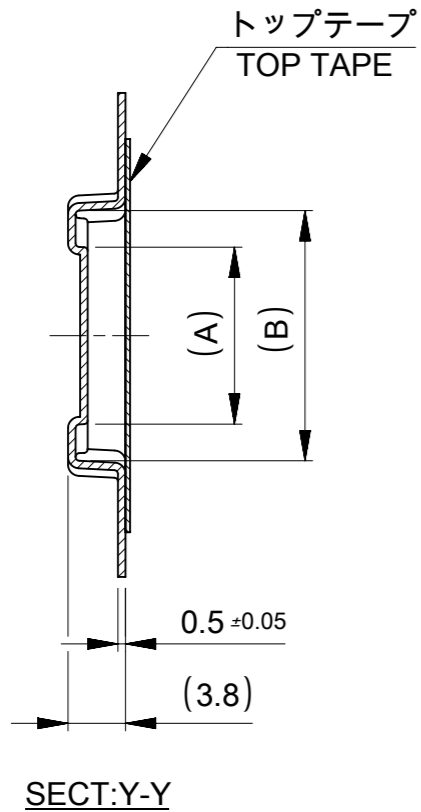
REVISION G

molex

0.5 MM PITCH B-TO-B CONN.
HEIGHT = 3 & 4 RECEPTACLE EMBOSS TAPE PACKAGE

PRODUCT CUSTOMER DRAWING

引き出し方向
PULL OUT DIRECTION



32mm 幅キャリアテープ
32mm WIDTH CARRIER TAPE

32	37.4	33.4	17.6	16.6	11.2	54167-0508	50
キャリアテープ幅 CARRIER TAPE WIDTH	E	D	(C)	(B)	(A)	MATERIAL NO.	極数 CKT.

THIS DRAWING CONTAINS INFORMATION THAT IS PROPRIETARY TO MOLEX ELECTRONIC TECHNOLOGIES, LLC AND SHOULD NOT BE USED WITHOUT WRITTEN PERMISSION

DIMENSION UNITS mm	SCALE NTS	CURRENT REV DESC: REVISED					
GENERAL TOLERANCES (UNLESS SPECIFIED)		molex 0.5 MM PITCH B-TO-B CONN. HEIGHT = 3 & 4 RECEPTACLE EMBOSS TAPE PACKAGE PRODUCT CUSTOMER DRAWING					
ANGULAR TOL ± 3.0°							
GENERAL TOLERANCES (UNLESS SPECIFIED)		EC NO: 649457		2020/08/21		DOCUMENT NUMBER	
10 UNDER ± 0.2		DRWN: SUDAYGUNAGI		2020/12/02		SD-54167-002	
10 OVER 30 UNDER ± 0.25		CHK'D: HSHIMOYAMA		2020/12/02		DOC TYPE DOC PART REVISION	
30 OVER ± 0.3		APPR: SHOSHIKAWA		2020/09/09		PSD 001 G	
ANGULAR ± 3°		INITIAL REVISION:		2005/08/31		MATERIAL NUMBER	
DRAFT WHERE APPLICABLE MUST REMAIN WITHIN DIMENSIONS		DRWN: NAIDA		2005/09/09		CUSTOMER	
DRAFT WHERE APPLICABLE MUST REMAIN WITHIN DIMENSIONS		APPR: NUKITA		A3-SIZE		GENERAL	
THIRD ANGLE PROJECTION		DRAWING		SERIES		SHEET NUMBER	
THIRD ANGLE PROJECTION		DRAWING		SERIES		SHEET NUMBER	
THIRD ANGLE PROJECTION		DRAWING		SERIES		SHEET NUMBER	