



产品编号 : [901560146](#)

Product Description : 2.54mm Pitch C-Grid III Crimp Housing Single Row, 6 Circuits, Black

系列号 : 90156

状态 : Active

Product Category : Connector Housings



文件和资源

图纸

[图纸 901560146_sd.pdf](#)

[包装设计图 PK-90156-0001-001.pdf](#)

3D 模型和设计文件

[3D模型 901560146_stp.zip](#)


规格

[应用规格 901190001-AS-000.pdf](#)

[产品规格 PS-99020-0001-001.pdf](#)

产物环境合规

合规

GADSL/IMDS	Duty-To-Declare
China RoHS	
EU ELV	Not Relevant
Low-Halogen Status	Low-Halogen per IEC 61249-2-21
REACH SVHC	Not Contained per D(2023)3788-DC (14 Jun 2023)
EU RoHS	Compliant per EU 2015/863

多部分产品合规性声明

- Eu RoHS
- REACH SVHC
- Low-Halogen

多部分行业合规性文件

- IPC 1752A Class C

- IPC 1752A Class D
- Molex Product Compliance Declaration
- IEC-62474
- chemSHERPA (xml)

欧盟 RoHS 合格证书

产品详情

常规

状态	活动
类别	Connector Housings
系列	90156
说明	2.54mm Pitch C-Grid III Crimp Housing Single Row, 6 Circuits, Black
应用	Signal, Wire-to-Board
产品系列	C-Grid III Interconnects
产品名称	C-Grid III
UPC	800753668058

机构

UL	E29179
----	--------

物理

断开	否
电路数 (最多)	6
颜色-树脂	黑色
性别	Receptacle
符合灼热丝规范	否
锁定插接部位	是
材料 - 树脂	PP0
净重	0.512/g
行数	1
包装形式	Bag
面板安装式	否
间距 - 插配接口	2.54mm
运行温度范围	-55° to +105° C

可配插/可连接使用的产品

可配插部件

描述	产品编号
C-Grid III Vertical Single Row Headers	<u>90120</u>
C-Grid III Single Row Headers	<u>90136</u>
C-Grid III Right-Angle Single Row Headers	<u>90121</u>

可连接使用部件

描述	产品编号
Pre-Crimped Lead C-Grid III Female-to-C-Grid III Female, Tin (Sn) Plating, 150.00mm Length, 22 AWG, Black	<u>/content/molex/molex-dot-com/cn/zh/products/product-page.html/797582022.html</u>
Pre-Crimped Lead C-Grid III Female-to-C-Grid III Female, Tin (Sn) Plating, 300.00mm Length, 22 AWG, Black	<u>/content/molex/molex-dot-com/cn/zh/products/product-page.html/797582023.html</u>
C-Grid III Female Crimp Terminals	<u>90119</u>

2 & 3
CIRCUITS

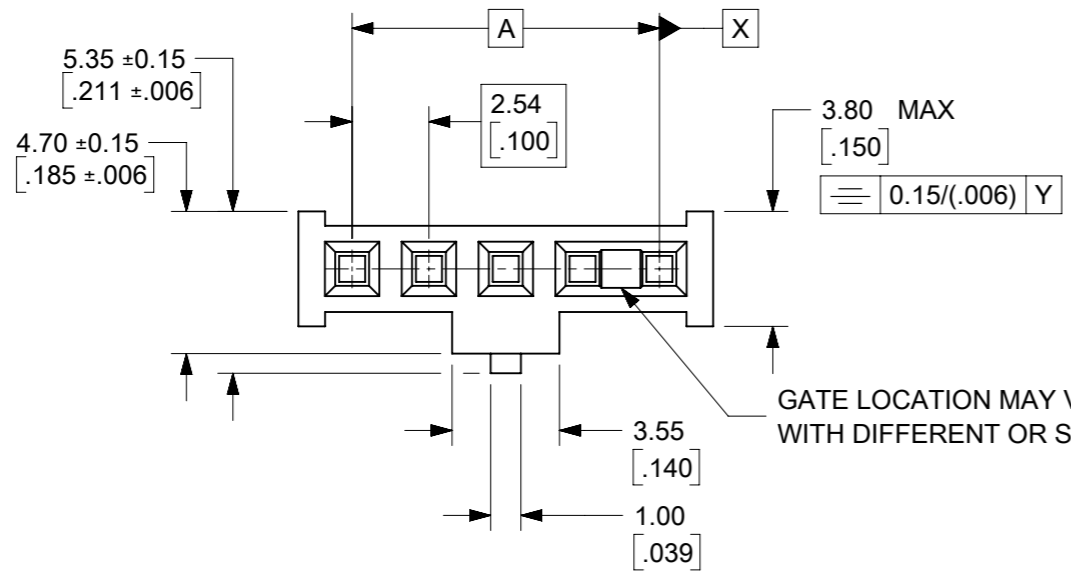
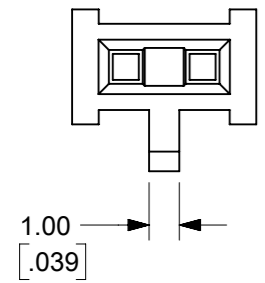
4 TO 32
CIRCUITS

PART NUMBER:
90156-XXXX

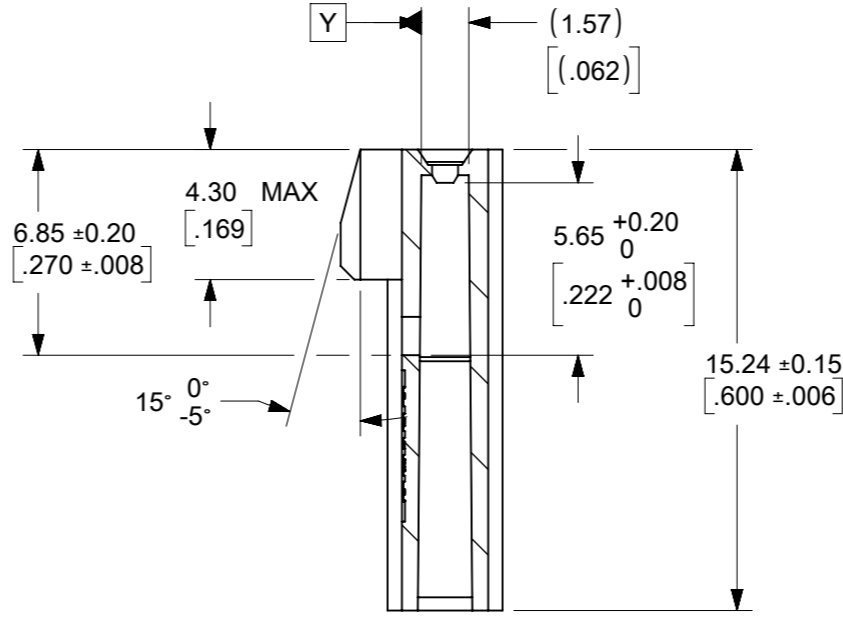
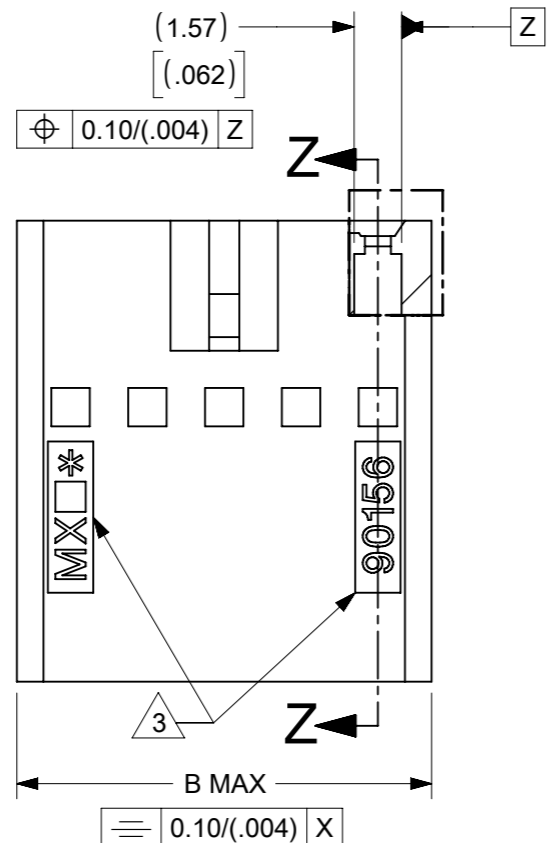
CIRCUIT SIZE
REF.NO
(SEE CHART)

MATERIAL CODE:
SEE NOTE 1

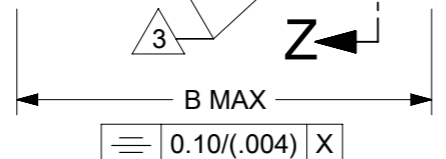
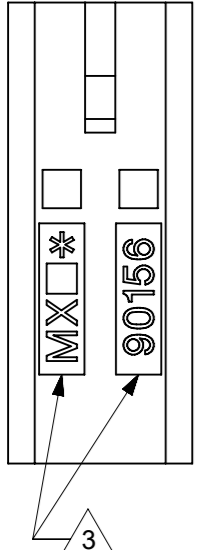
No. OF CKTS	PART NUMBER	DIM A	DIM B
2	90156-XX42	2.54/(.100)	6.14/(.242)
3	▲ -XX43	5.08/(.200)	8.68/(.342)
4	-XX44	7.62/(.300)	11.22/(.442)
5	-XX45	10.16/(.400)	13.76/(.542)
6	-XX46	12.70/(.500)	16.30/(.642)
7	-XX47	15.24/(.600)	18.84/(.742)
8	-XX48	17.78/(.700)	21.38/(.842)
9	-XX49	20.32/(.800)	23.92/(.942)
10	-XX50	22.86/(.900)	26.46/(1.042)
11			
12	-XX52	27.94/(1.100)	31.54/(1.242)
13	-XX53	30.48/(1.200)	34.08/(1.342)
14	-XX54	33.02/(1.300)	36.62/(1.442)
15	-XX55	35.56/(1.400)	39.16/(1.542)
16	-XX56	38.10/(1.500)	41.70/(1.642)
17			
18	-XX58	43.18/(1.700)	46.78/(1.842)
19			
20	-XX60	48.26/(1.900)	51.86/(2.042)
21			
22	-XX62	53.34/(2.100)	56.94/(2.242)
23			
24			
25	-XX65	60.96/(2.400)	64.56/(2.542)
26			
27			
28			
29			
30	-XX70	73.66/(2.900)	77.26/(3.042)
31			
32	90156-XX72	78.74/(3.100)	82.34/(3.242)



GATE LOCATION MAY VARIES
WITH DIFFERENT OR SAME CKT SIZE



SECTION Z-Z



- NOTES:
- MATERIAL CODE XX: 90156 - XX ** :
01 - POLYPHENYLENE OXIDE (PPO) UL94 V-1 COLOR: BLACK
10 - GLOW WIRE OPTION POLYESTER (PBT) UL94 V-2 COLOR: NATURAL
 - PRODUCT SPECIFICATION: PS-99020-0001
 - MOLEX LOGO, SERIES NUMBER AND CAVITY ID TO BE PLACED ON THIS FACE.

FUNCTIONAL SYMBOLS		THIS DRAWING CONTAINS INFORMATION THAT IS PROPRIETARY TO MOLEX ELECTRONIC TECHNOLOGIES, LLC AND SHOULD NOT BE USED WITHOUT WRITTEN PERMISSION		CURRENT REV DESC:			
DIMENSION UNITS		SCALE		EC NO: 742393			
GENERAL TOLERANCES (UNLESS SPECIFIED)		MM		INCH		C7 GRID III SINGLE ROW CRIMP CONNECTOR HOUSING	
DIVISIONAL SYMBOLS		4 PLACES ±		± 0.004		PRODUCT CUSTOMER DRAWING	
		3 PLACES ±		± 0.2		DOCUMENT NUMBER	
		2 PLACES ±		± 2.0°		SDA-90156	
		1 PLACE ±		±		DOC TYPE	
		0 PLACES ±		±		DOC PART	
		ANGULAR TOL ± 2.0°				REVISION	
DRAFT WHERE APPLICABLE MUST REMAIN WITHIN DIMENSIONS		THIRD ANGLE PROJECTION		DRAWING		SHEET NUMBER	
		A3-SIZE		SERIES		1 OF 1	
		90156		MATERIAL NUMBER		CUSTOMER	
		SEE TABLE		GENERAL MARKET			