



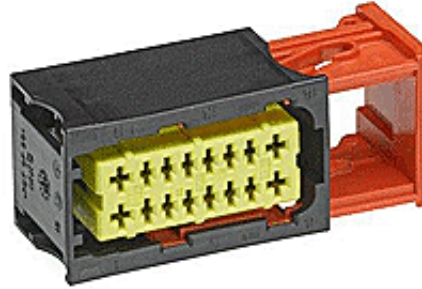
产品编号 : [982731001](#)

Product Description : 3.33mm / 6.00mm Pitch Hybrid Inline Female Housing, Right Slide Orientation, Dual Row, 16 Circuits, Black

系列号 : 98273

状态 : Active

Product Category : Connector Housings



文件和资源

图纸

[图纸 982731001_sd.pdf](#)

3D 模型和设计文件

[3D模型 982731001_stp.zip](#)


规格

[应用规格 AS-98273-001-001.pdf](#)

[包装规格 PK-98273-001-001.pdf](#)

产物环境合规

合规

GADSL/IMDS	Compliant
China RoHS	
EU ELV	Compliant per 2000/53/EC
Low-Halogen Status	Low-Halogen per IEC 61249-2-21
REACH SVHC	Not Contained per D(2023)3788-DC (14 Jun 2023)
EU RoHS	Compliant per EU 2015/863

多部分产品合规性声明

- Eu RoHS
- REACH SVHC
- Low-Halogen

多部分行业合规性文件

- IPC 1752A Class C
- IPC 1752A Class D

- Molex Product Compliance Declaration

- IEC-62474

- chemSHERPA (xml)

欧盟 RoHS 合格证书

产品详情

常规

状态	活动
类别	Connector Housings
系列	98273
说明	3.33mm / 6.00mm Pitch Hybrid Inline Female Housing, Right Slide Orientation, Dual Row, 16 Circuits, Black
应用	Power, Wire-to-Wire
个评论	7 Amps max @85° C for NSCC terminal 98897 with 2.00 mm ² wire or 15 Amps max @85° C for UCC terminal 98898 with 4.00 mm ² wire
产品系列	NSCC - New Standard Casing Contact
产品名称	NSCC
UPC	756054713402

电气

每触点最大电流	15.0A, 7.0A
---------	-------------

物理

电路详图	4x2.8mm 12x1.5mm female terminals
电路数 (最多)	16
颜色-树脂	Black, Natural
性别	Receptacle
符合灼热丝规范	否
锁定插接部位	是
材料 - 树脂	Polyester, Polyester Alloy
净重	19.160/g
行数	2
包装形式	Bag

面板安装式	否
间距 - 插配接口	3.33mm, 6.00mm
有极性的插配件	是
端口	1
可堆叠的	否
运行温度范围	-40° to +85° C

进程

无铅	不适用
----	-----

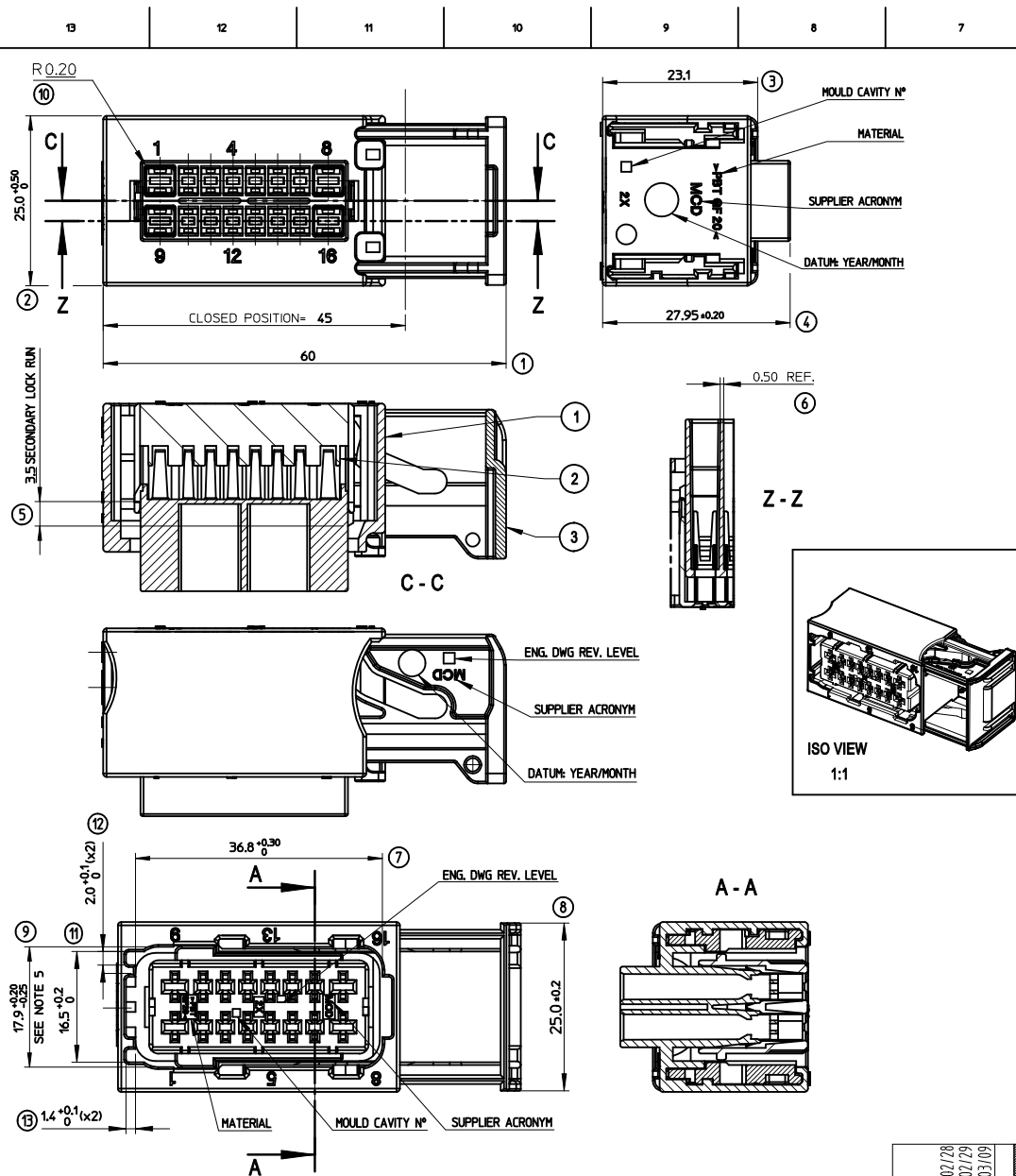
可配插/可连接使用的产品

可配插部件

描述	产品编号
3.33mm / 6.00mm Pitch Hybrid Male Inline Housing, Dual Row, 16 Circuits, Black	<u>0982761001</u>

可连接使用部件

描述	产品编号
NSCC Receptacle Terminals Size 1.5	<u>98897</u>
5.00mm Pitch UCC2 Receptacle Terminals	<u>98898</u>



P/N*	REV.	DESCRIPTION	NAME	DATE
CODING: BLACK P/N*: 0982731001	A	-PRELIMINARY ISSUE FOR GENERAL MARKET	EBA	04/11/08
	B	-ADDED ERGONOMICS EVOLUTION FOR UNMATING SLIDE	FKO	07/10/23
	C	-NEW PIN-HOLE	DDO	09/10/19
	D	-ALL MARKINGS UPDATED. - TEXTS IN FRENCH REMOVED.	GD	12/02/28
		-NOTES UPDATED.		
CODING: GREEN P/N*: 0982731002				
CODING: BLUE P/N*: 0982731003				
CODING: WHITE P/N*: 0982731004				
CODING: BROWN P/N*: 0982731005				
CODING: GREY P/N*: 0982731006				

MODIFICATIONS				
REV.	DESCRIPTION	NAME	DATE	
A	-PRELIMINARY ISSUE FOR GENERAL MARKET	EBA	04/11/08	
B	-ADDED ERGONOMICS EVOLUTION FOR UNMATING SLIDE	FKO	07/10/23	
C	-NEW PIN-HOLE	DDO	09/10/19	
D	-ALL MARKINGS UPDATED. - TEXTS IN FRENCH REMOVED.	GD	12/02/28	
	-NOTES UPDATED.			

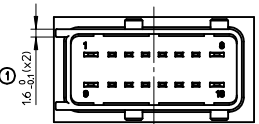
- NOTES:
- REPRESENTED CONNECTOR: BLACK CODING.
 - FEMALE CONNECTOR WILL MATE WITH MALE CONN. P/N*098276100X.
 - APPLICATION SPECIFICATION: AS-98273-001
 - PACKAGING SPECIFICATION: PK-98273-001
 - BOW ALLOWED: 0,4MM
 - TERMINALS TO BE USED ARE SPECIFIED ON THE APPL. SPEC.

MOLEX P/N*	ITEM	DESCRIPTION	MATERIAL	COLOUR
0982750001	3	LOCKING SLIDER	>PBT-GF15<	RED
0982740001	2	SECONDARY LOCKING (TPA)	>PBT-GF20<	YELLOW
098273000X	1	FEMALE HOUSING	>PBT-GF20<	SEE CHART

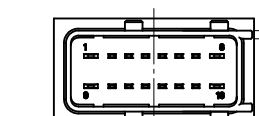
REVISED EC NO: G2012-0137 DRWNG:DESBRUIERES 2012/02/28 CHKD:Y LOUAS 2012/02/29 APPR:CBOLCHAN 2012/03/09	QUALITY SYMBOLS 	GENERAL TOLERANCES (UNLESS SPECIFIED)		DIMENSION STYLE MM ONLY	SCALE 2:1	DESIGN UNITS METRIC	FIRST ANGLE PROJECTION		
		4 PLACES ± --- ± --- 3 PLACES ± --- ± --- 2 PLACES ± 0.10 ± --- 1 PLACE ± 0.2 ± ---	mm INCH ± --- ± --- ± 0.10 ± --- ± 0.2 ± ---	DRAWN BY EBASSET	DATE 2004/11/08	TITLE 16W HYB. - FEM. CONN. 1.5 - 2.8			
		ANGULAR ± 1 °		CHECKED BY EBASSET	DATE 2004/11/08	MOLEX INCORPORATED			
		DRAFT WHERE APPLICABLE MUST REMAIN WITHIN DIMENSIONS		APPROVED BY LSTICKEI	DATE 2004/11/08				

THIS DRAWING CONTAINS INFORMATION THAT IS PROPRIETARY TO MOLEX INCORPORATED AND SHOULD NOT BE USED WITHOUT WRITTEN PERMISSION

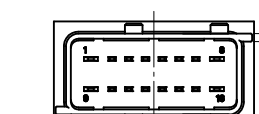
CODINGS SCALE 2:1



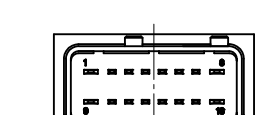
COLOR : BLACK



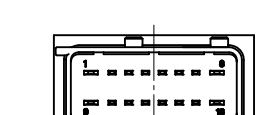
COLOR : GREEN



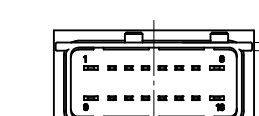
COLOR : BLUE



COLOR : WHITE

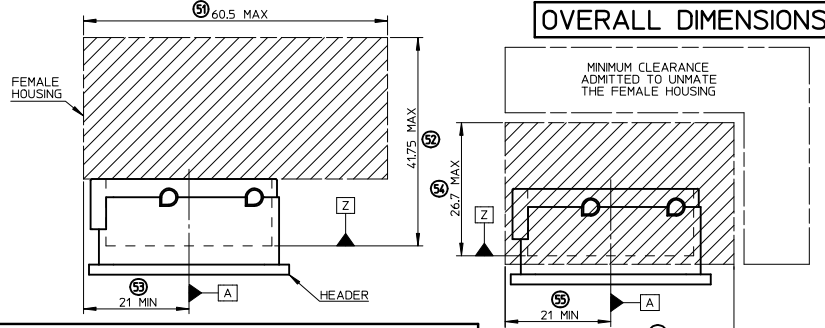


COLOR : BROWN

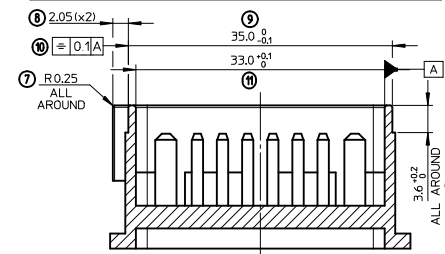


COLOR : GREY

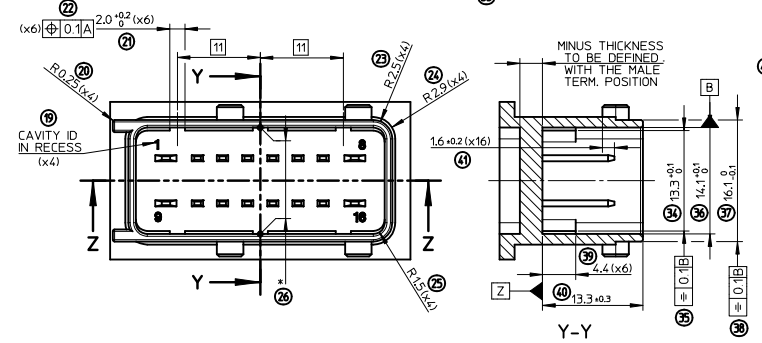
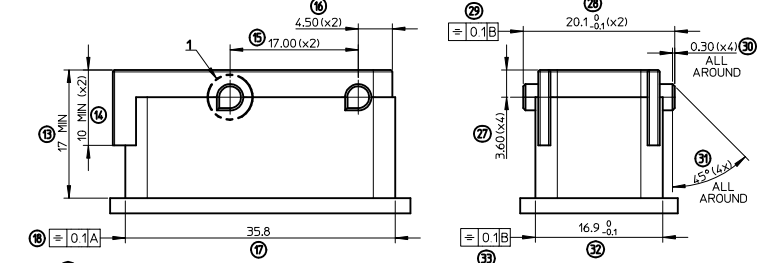
OVERALL DIMENSIONS



**HEADER DEFINITION
BLACK CODING REPRESENTED**



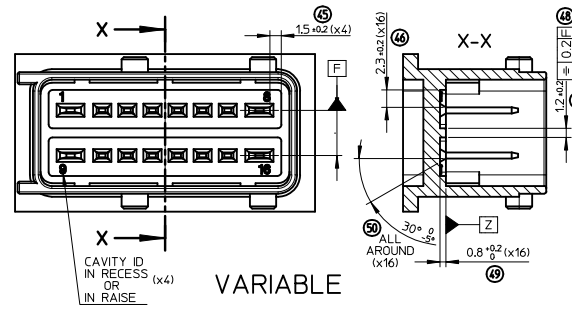
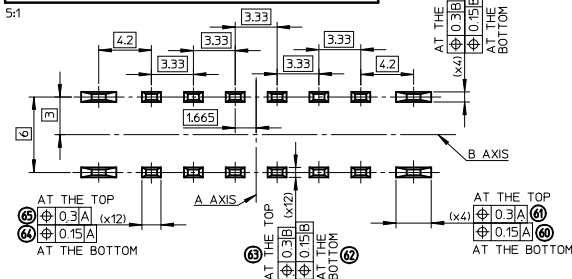
Z-Z



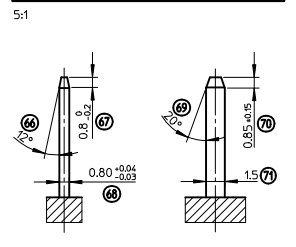
INSPECTION BALLOON NUMBER LOG

PER DRAWING REVISION: A
 LAST BALLOON NUMBER USED: 78
 ADDED BALLOON NUMBERS: NONE
 REMOVED BALLOON NUMBERS: NONE

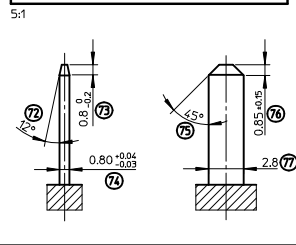
MALE TERMINALS POSITION



1.5 MALE TERMINAL DEFINITION



2.8 MALE TERMINAL DEFINITION



NOTES

- 1 - MALE TERMINALS :
 - RESISTANCE : 100N MIN IN MALE TERM. AXIS
 - MATERIAL : COPPER, COPPER ALLOY OR BRASS
 - FINISHES : TIN PLATED 2µm MIN
- 2 - HEADER :
 - RADI WITHOUT DIM : R=0.3 MM
 - E MIN : MINIMUM MATERIAL THICKNESS RECOMMENDED FOR SPECIFIED MATERIAL
 - (78) - MATERIAL : PBT-GF20 (RECOMMENDED)
 - WARPING : 0.4 MM MAX ACCEPTED ON "x" (0.2 MM ON EACH SIDE)
- 3 - MATES WITH : MOLEX CONNECTORS 98273-100X

FIRST RELEASE EC NO: G2012-0959 DRAWN: PBOSQUAIN 2012/04/18 CHKD: AHERBELIN 2012/05/11 APPROV: PLESSIS 2012/05/25	QUALITY SYMBOLS ▽-0 ▽-1 ▽-2	GENERAL TOLERANCES (UNLESS SPECIFIED)		DIMENSION STYLE		SCALE	DESIGN UNITS	FIRST ANGLE PROJECTION
		m	INCH	MM ONLY		3:1	METRIC	
		4 PLACES ± --- ± ---		DRAWN BY	DATE	TITLE		
		3 PLACES ± --- ± ---		PBOSQUAIN	2012/04/18	16W INTERFACE HYB TERM (FOR FEMALE HOUSING)		
		2 PLACES ± 0.05 ± ---		CHECKED BY	DATE			
		1 PLACE ± 0.1 ± ---		AHERBELIN	2012/05/11			
		0 PLACE ± 0.1 ± ---		APPROVED BY	DATE			
				OPLESSIS	2012/05/25			
		ANGULAR ± 2 °		MATERIAL NO.		DOCUMENT NO.		
		DRAFT WHERE APPLICABLE MUST REMAIN WITHIN DIMENSIONS		N/A		SD-98273-002		
		SIZE 1		THIS DRAWING CONTAINS INFORMATION THAT IS PROPRIETARY TO MOLEX INCORPORATED AND SHOULD NOT BE USED WITHOUT WRITTEN PERMISSION				SHEET NO. 1 OF 1