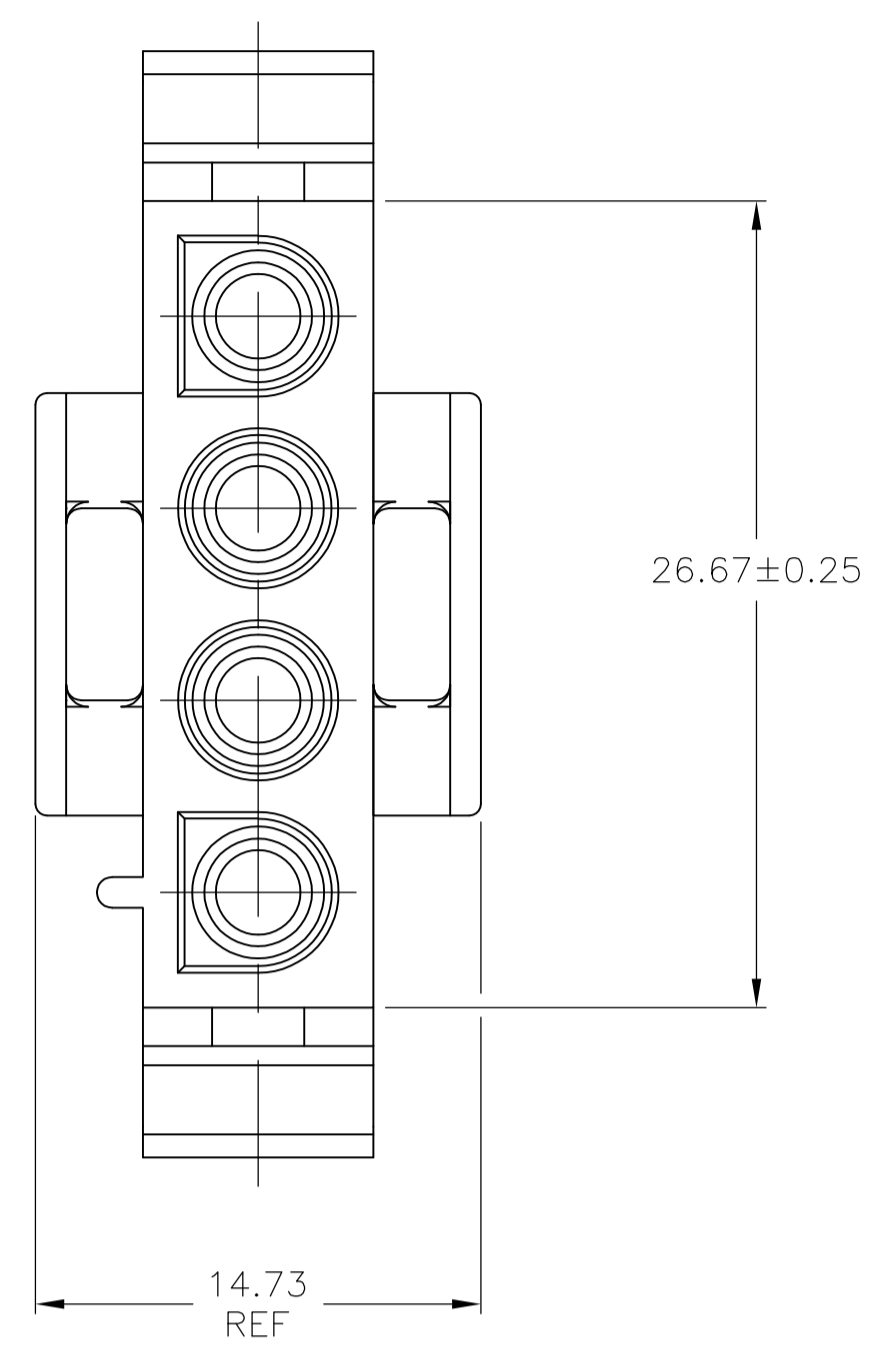
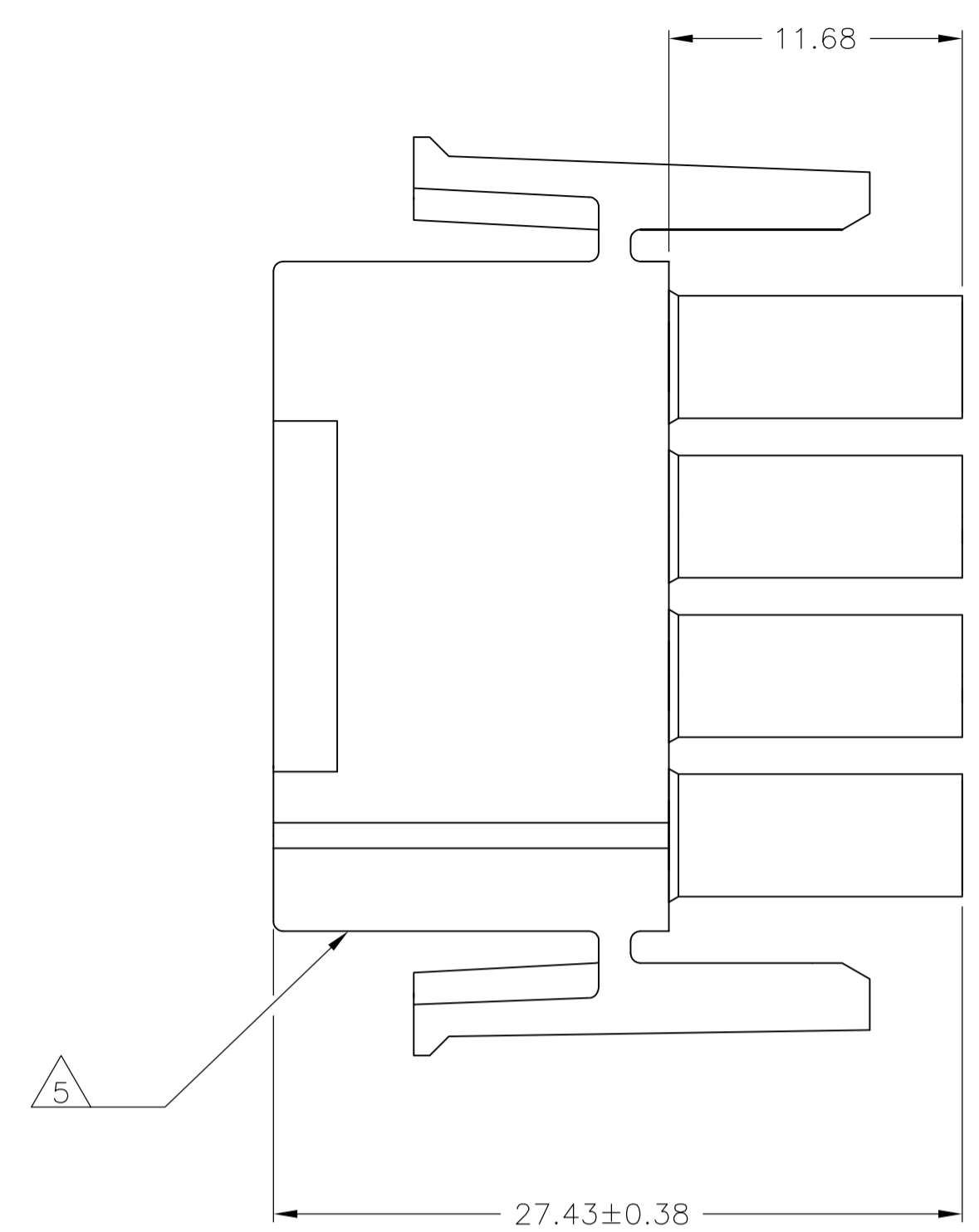
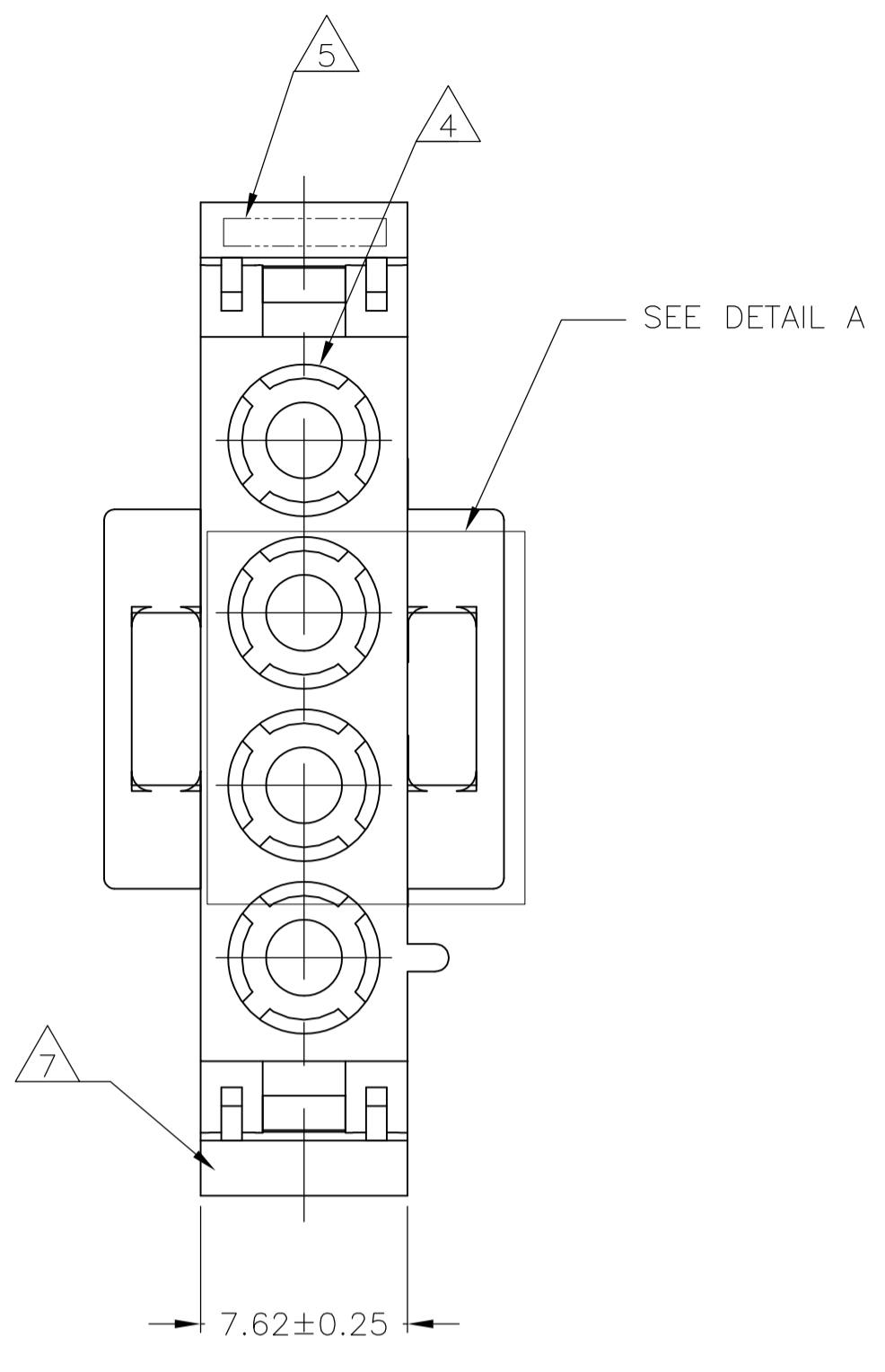
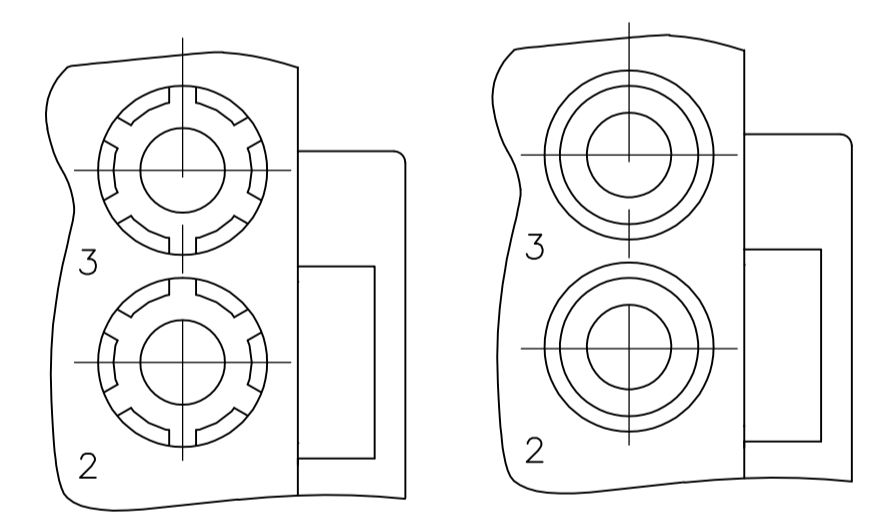
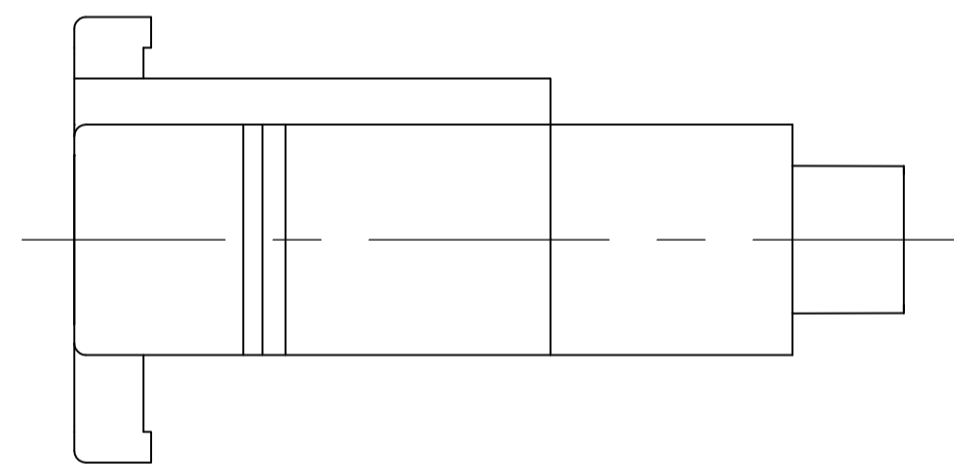


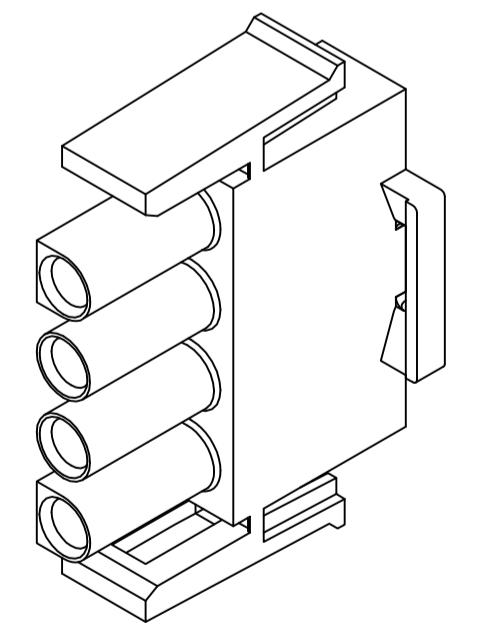
LOC	DIST	REVISIONS			
P	LTR	DESCRIPTION	DATE	DWN	APVD
AP3	REVISED PER	ECR-17-008392	26JUN2017	BW	KR



- NOTES:
- MATES WITH APPROPRIATE UNIVERSAL MATE-N-LOK™ CAP OR HEADER.
 - SMALL NICKS ARE PERMITTED ON THE CIRCUIT TOWERS WHICH COULD INCREASE THE INITIAL HOUSING MATING FORCE BY UP TO 4.4 NEWTONS [1.0 LBS]. NO INDIVIDUAL NICKED TOWER SHALL INCREASE THIS FORCE BY OVER 2.2 NEWTONS [.5 LBS].
 - DIMENSIONS SHOWN REPRESENT PRODUCT IN DRY, AS MOLDED, CONDITION. ADDITIONAL 2% GROWTH DUE TO SUBSEQUENT MOISTURE ABSORPTION MAY OCCUR AND SHOULD BE ACCOUNTED FOR.
- △4 FOUR RIBS EQUALLY SPACED, NO SPECIFIC ORIENTATION. NO RIBS OR SIX RIBS EQUALLY SPACED, NO SPECIFIC ORIENTATION, OPTIONAL.
- △5 UNDERWRITERS RECOGNIZED COMPONENT LOGO AND CSA CERTIFICATION LOGO TO BE LOCATED ONCE EACH ON SIDE OF HOUSING.
- △6 TRADEMARK LOCATION (AMP OR TE CONNECTIVITY).
- △7 MANUFACTURING LOCATION ID (OPTIONAL).
- △8 OBSOLETE PARTS: OBSOLETE CIS STREAMLINING PER D.RENAUD/D.SINISI



DETAIL A
OPTIONAL CONSTRUCTION



3-DIMENSIONAL MODEL
NTS

MM	IN
27.43	1.080
26.67	1.050
14.73	.580
11.68	.460
7.62	.300
0.38	.015
0.25	.010
0.13	.005
MM	IN

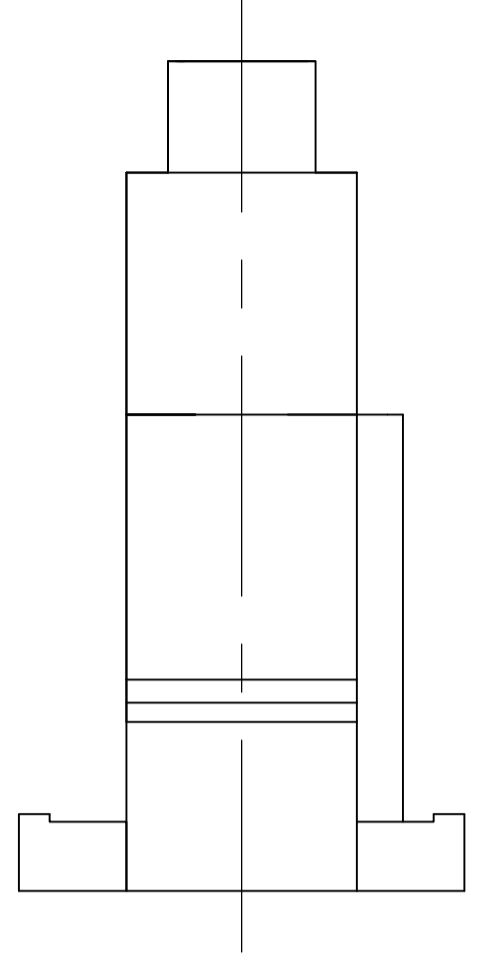
CONVERSION TABLE

勝特力電材超市-龍山店 886-3-5773766
 勝特力電材超市-光復店 886-3-5729570
 勝特力電子(上海) 86-21-34970699
 勝特力電子(深圳) 86-755-83298787
<http://www.100y.com.tw>

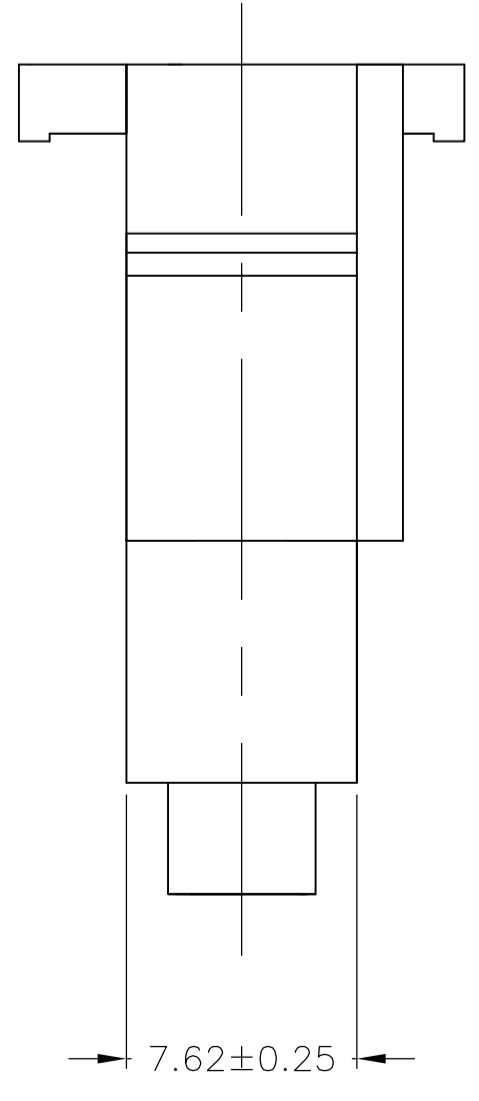
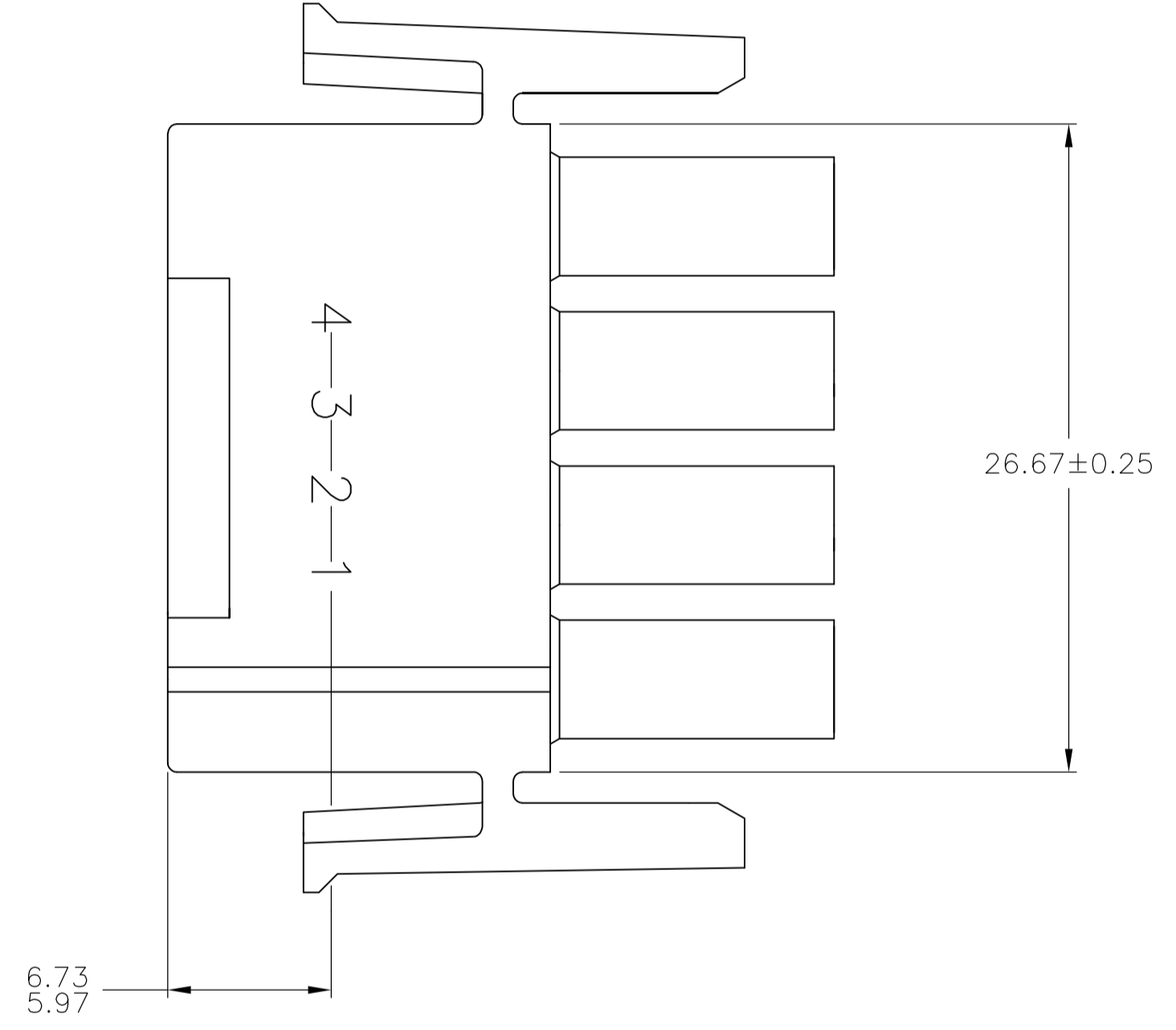
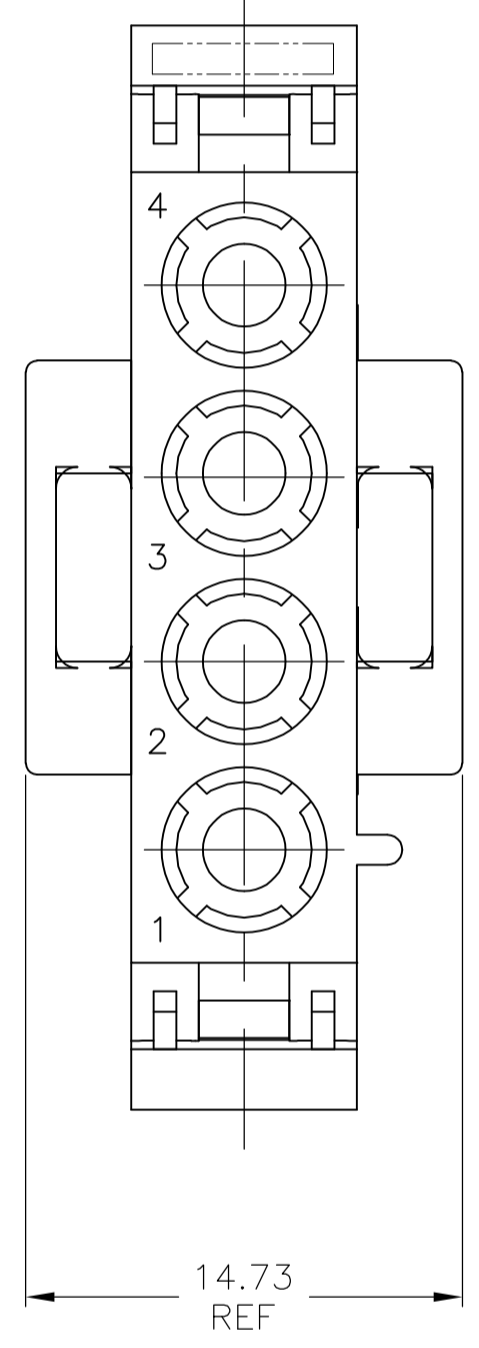
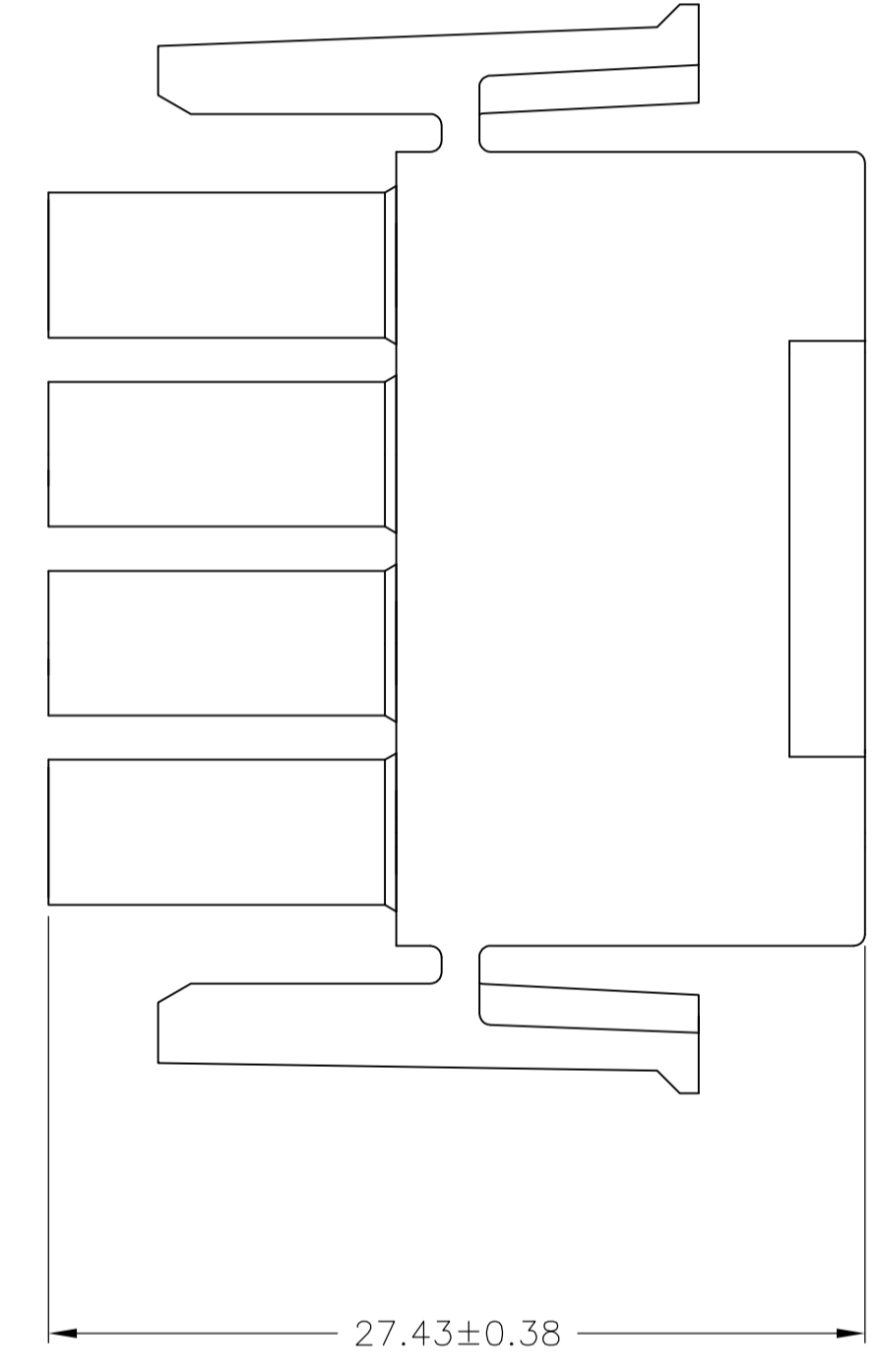
△8 OBSOLETE	COLOR	PART NUMBER
	BLACK	1-480702-9
	GRAY	1-480702-8
	BLUE	1-480702-6
	GREEN	1-480702-5
△8 SUPERSEDED BY 1-480700-0	YELLOW	1-480702-4
△8 OBSOLETE	ORANGE	1-480702-3
	RED	1-480702-2
	BROWN	1-480702-1
	NATURAL	1-480702-0
	COLOR	PART NUMBER

DIMENSIONS:		TOLERANCES UNLESS OTHERWISE SPECIFIED:		DIN R VESTAL 08FEB95		STE	
mm		0. PLC ± -		CHK R SWING 08FEB95	NAME	SIZE	TE Connectivity
		1. PLC ± -		APVD D SELF 08FEB95	PRODUCT SPEC	SCALE	4:1
		2. PLC ± 0.13		APPLICATION SPEC	NAME	SHEET	1 OF 2
		3. PLC ± -		RESTRICTED TO	PLUG, 4 CIRCUIT, UNIVERSAL MATE-N-LOK(TM)	REV	AP3
		4. PLC ± -			SIZE	SCALE	4:1
		ANGLES ± 0°30'			CAGE CODE	SHEET	1 OF 2
MATERIAL NYLON, UL 94V-2	FINISH -	WEIGHT			DRAWING NO	REV	AP3
					A1 00779	SCALE	4:1
					480702	SHEET	1 OF 2
					CUSTOMER DRAWING	REV	AP3

LOC	DIST	REVISIONS			
CM	0	REV	DESCRIPTION	DATE	DNW
		1	SEE SHEET 1		



- NOTES:
1. STAMP NUMBERS 3.18 HIGH AT WIRE END OF HOUSING (12 POINT DAVID TYPE).
 2. CHARACTERS TO BE POSITIONED ON HOUSING TO BE READ FROM WIRE END ONLY.
 3. VIOLET, BLACK, BROWN AND BLUE COLORED BLOCKS TO BE STAMPED WITH WHITE CHARACTERS. ALL OTHER COLORED BLOCKS TO BE STAMPED WITH BLACK CHARACTERS.



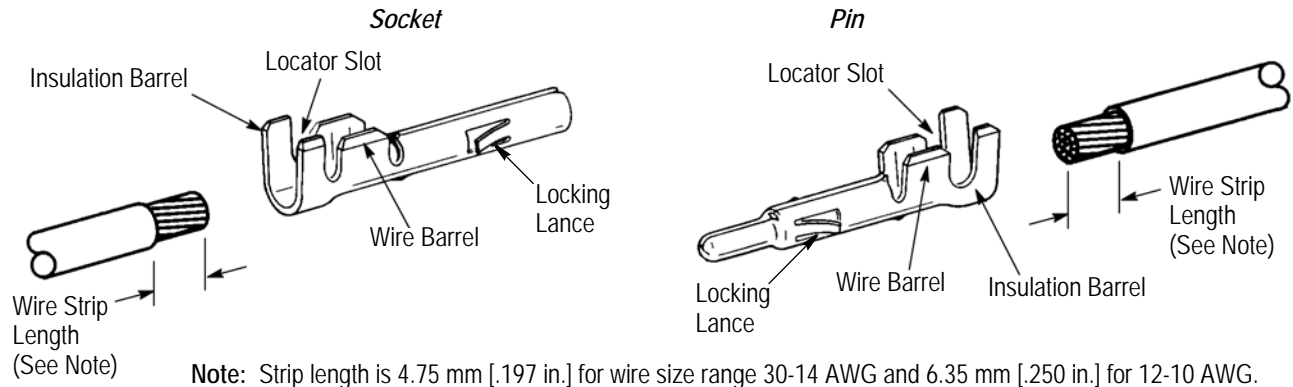
6.73	.265	-	-
5.97	.235	-	-
3.18	.125	27.43	1.080
0.38	.015	26.67	1.050
0.25	.010	14.73	.580
0.13	.005	7.62	.300
MM	IN	MM	IN

CONVERSION TABLE

NATURAL COLOR	2-480702-0
	PART NUMBER

THIS DRAWING IS A CONTROLLED DOCUMENT.		DIN R VESTAL 08FEB95	TE Connectivity	
DIMENSIONS: mm		CHK R SWING 08FEB95	PLUG, 4 CIRCUIT, UNIVERSAL MATE-N-LOK(TM)	
TOLERANCES UNLESS OTHERWISE SPECIFIED:		APVD D SELF 08FEB95	RESTRICTED TO	
0 PLC ± -		NAME	SIZE	
1 PLC ± -		PRODUCT SPEC	CAGE CODE	
2 PLC ± 0.13		APPLICATION SPEC	DRAWING NO	
3 PLC ± -		WEIGHT	A1 00779	
4 PLC ± -		FINISH	C=480702	
ANGLES ± 0°30'		CUSTOMER DRAWING	SCALE 4:1	SHEET 2 OF 2
MATERIAL NYLON, UL 94V-2				REV AP3

Universal MATE-N-LOK Contacts



Note: Strip length is 4.75 mm [.197 in.] for wire size range 30-14 AWG and 6.35 mm [.250 in.] for 12-10 AWG.

WIRE		UNIVERSAL MATE-N-LOK CONTACT				HAND TOOLING (Instruction Sheet)
SIZE (AWG) RANGE	INSULATION DIAMETER (mm [in.])	LOOSE PIECE		STRIP FORM		
		PIN	SOCKET	PIN	SOCKET	
30-26	0.81-1.45 [.032-.057]	770672-[-]	770673-[-]	350924-[-]	350925-[-]	58439-[-] (408-9591)
24-18	1.02-2.54 [.040-.100]	350690-[-]	350689-[-] ◆	350561-[-]	350570-[-] ◆	91510-1 408-9479
		350690-[-]	640347-[-]	350561-[-]	350851-[-]	
		350706-[-] ■	—	350699-[-] ■	—	
20-14	1.52-3.30 [.060-.130]	350547-[-]	350550-[-]	350218-[-]	350536-[-]	91500-1 (408-9476)
		350705-[-] ■	—	350687-[-] ■	—	
		350669-[-] †	—	350654-[-] †	—	
	3.30-5.08 [.130-.200]	350552-[-]	350551-[-]	350538-[-]	350537-[-]	91508-1 †† (408-8547) 91506-1 †† (408-8547)
350707-[-] ■		—	350700-[-] ■	—		
18-14	3.30-5.08 [.130-.200]	350918-[-]	350919-[-]	350873-[-]	350874-[-]	91508-1 †† (408-8547) 91506-1 †† (408-8547)
12-10	5.08 [.200] Max	640309-[-]	640310-[-]	350922-[-]	350923-[-]	69710-1 †† (Without Dies) (408-2095) and Die 58380-[-]

◆ Stock thickness is 0.25 mm [.010 in.]; all others is 0.30 mm [.012 in.] ■ Split pin contact

† Use Hand Tool 91508-1 for wire size 20-18 AWG, Hand Tool 91506-1 for wire size 16-14, Hand Tool 69710-1 and Die Set 583380-1 for 12 AWG, and Die Set 58380-2 for 10 AWG.

†† Grounding pin

Figure 1

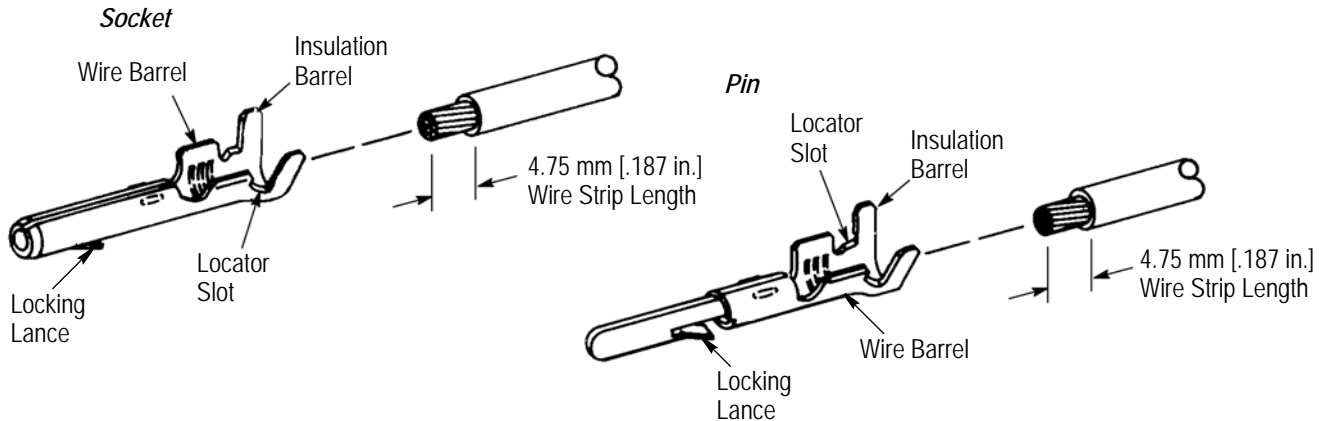
1. INTRODUCTION

This instruction sheet covers the use of MATE-N-LOK contact and housing selection charts. MATE-N-LOK contacts and housings are divided into three categories: universal, commercial, and .140.

Read these instructions thoroughly to be sure the selected contacts are compatible with the specified housings, and the selected wire and application tooling are compatible with the contacts.

Reasons for reissue of this document are provided in Section 5, REVISION SUMMARY.

Commercial MATE-N-LOK Contacts

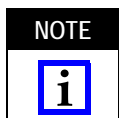


WIRE		COMMERCIAL MATE-N-LOK CONTACT				HAND TOOLING (Instruction Sheet 408-8547)
SIZE (AWG) RANGE	INSULATION DIAMETER (mm [in.])	LOOSE PIECE		STRIP FORM		
		PIN	SOCKET	PIN	SOCKET	
30-22	0.191 [.075] (Max)	61174-[-]	61173-[-]	350079-[-]	350078-[-]	91515-1
24-18	1.09-1.91 [.043-.075]	60618-[-]	60617-[-]	61116-[-]	61114-[-]	91528-1
24-20	1.52-2.54 [.060-.100]	60618-[-]	60617-[-]	61116-[-]	61114-[-]	91512-1
		—	61473-[-]	—	61115-[-]	
20-14	2.54-3.30 [.100-.130]	60620-[-]	60619-[-]	61118-[-]	61117-[-]	91504-1
(1) 18 and (1) 16 or (2) 18	2.92 [.115] (Max) and 3.30 [.130] (Max) ‡	350639-[-]	350638-[-]	350558-[-]	350557-[-]	91504-1

‡ 2.92 mm [.115 in.] (max) each for applicator termination and 3.30 mm [.130 in.] (max) combined for hand tool termination

Figure 2

The contacts must be installed into the appropriate housings and not switched between various categories.



Dimensions in this instruction sheet are in metric units [with U.S. customary units in brackets]. Figures are not drawn to scale.

2. DESCRIPTION

2.1. Contacts

Universal pin and socket contacts (see Figure 1) are available in five different wire ranges covering sizes 30 to 10 AWG with an insulation diameter range of 0.81 through 5.08 mm [.032 through .200 in.].

Commercial pin and socket contacts (see Figure 2) are available for terminating wire sizes 30 to 14 AWG.

.140 pin and socket .140 feature a stabilizing barrel and are available for terminating wire sizes 20 to 10 AWG.

The loose-piece contacts are designed for hand tool or pneumatic tool applications. The strip-form contacts

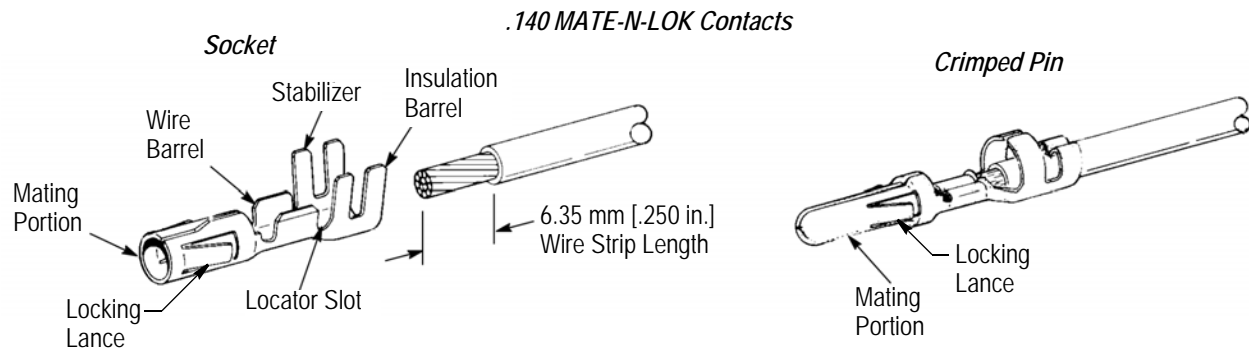
are terminated using miniature quick-change applicators used in the AMP-O-ELECTRIC* machine, AMPOMATOR* automatic lead-making machine, or the standard and mini-single end lead machine (SELM and Mini-SELM). Consult your Representative for assistance in selecting the machine and applicator that will best suit your needs.

2.2. Housings

.140 housings (see Figure 4) have a temperature rating of -55 to +105°C [-65 to 221°F] and a maximum voltage/current rating of 250 Vac at 28 amperes per contact.

Universal housings (see Figure 5) have a temperature rating of -55 to +105°C [-65 to 221°F] and a maximum voltage/current rating of 600 Vac at 19 amperes per contact. Pin and socket contacts can be used in either plug or cap housings.

Commercial housings (see Figure 6) have a temperature rating of -55 to +105°C [-65 to 221°F] and a maximum voltage/current rating of 250 Vac at 19 amperes per contact.



WIRE		.140 MATE-N-LOK CONTACT				HAND TOOLING (Instruction Sheet)
SIZE (AWG) RANGE	INSULATION DIAMETER (mm [in.])	LOOSE PIECE		STRIP FORM		
		PIN	SOCKET	PIN	SOCKET	
20-14	2.54-4.57 [.100-.180]	350389-[-]	350388-[-]	61627-[-]	61626-[-]	90247-1 (408-7434)
14-10		350391-[-]	350390-[-]	350201-[-]	350200-[-]	69710-1 (Without Dies) (408-2095) and Die 58373-[-] or 58374-[-]

Figure 3

3. SELECTION

Determine the housing type (universal, commercial, or .140) to be assembled. Refer to the listings of compatible contacts, and select the contact type and recommended wire size. Make contact selections from Figures 1, 2, and 3. Make housing selections from Figures 4, 5, and 6. Select contacts as follows:

- Determine the appropriate wire size to be used with the contact according to Column 1. Make certain the wire insulation diameter is within the range specified in Column 2.
- Columns 3, 4, 5, and 6 indicate the appropriate loose-piece and strip-form contacts for the selected wire size. Check that these base part numbers correspond with those on the package or reel.
- Column 7 indicates the appropriate hand tooling to be used to crimp loose-piece contacts. Machines for strip-form contacts are listed in Paragraph 2.1.

4. CONTACT INSERTION AND EXTRACTION

The following tools are recommended:

Contact Type	Insertion Tool	Extraction Tool
Universal	91002-1	1804030-1
Commercial	455830-1	305183 or 465644
.140	None ♦	318845-1

♦ Not necessary because of the large wire size

To insert a contact into a housing:

- Place the tweezer-shaped tool over the wire with the tool insertion tip behind the contact insulation barrel.

- Insert the contact into the housing cavity until the contact locking lance is fully seated.

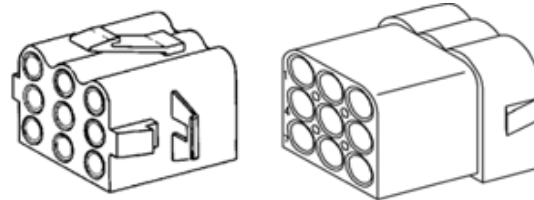
To extract a contact from a housing:

- Gently push the wire of the contact to be removed.
- From the mating face of the housing, slide the tube-shaped tool into the contact cavity of the contact to be removed until the locking lances are encased.
- Lighted push the tool while pulling the wire.

.140 MATE-N-LOK Housings

Plug (Socket)

Cap (Pin)



.140 MATE-N-LOK HOUSING

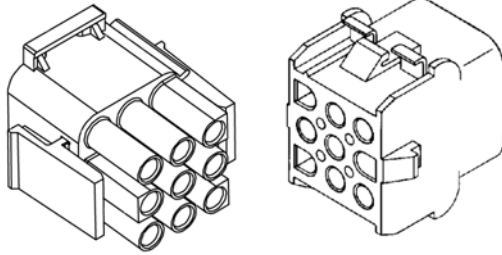
NO. OF CIRCUITS	PLUG	CAP
2	350344-[-]	350345-[-]
3	350346-[-]	350347-[-]
4	480510-[-]	480512-[-]
9	480585-[-]	480586-[-]
	480672-[-]	480673-[-]

Figure 4

Universal MATE-N-LOK Housings

Plug (Socket)

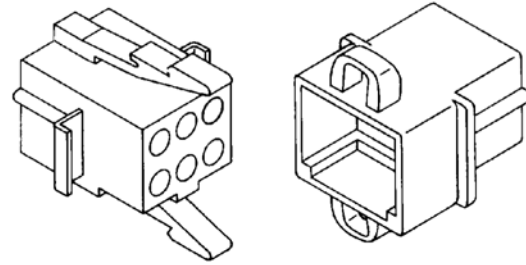
Cap (Pin)



Commercial MATE-N-LOK Housings

Plug (Socket)

Cap (Pin)



UNIVERSAL MATE-N-LOK HOUSING			
NO. OF CIRCUITS	PLUG	CAP	UL 94 MATERIAL RATING
1	350867-[]	770421-1	V-2
	350865-[]	350866-[]	V-0
2	480698-[]	480699-[]	V-2
	350777-[]	350778-[]	V-0
3	480700-[]	480701-[]	V-2
	350766-[]	350767-[]	V-0
4	480702-[]	480703-[]	V-2
	350799-[]	350780-[]	V-0
5	480763-[]	480764-[]	V-2
	350809-[]	350810-[]	V-0
6	480704-[]	480705-[]	V-2
	350715-[]	350781-[]	V-0
	640585-[]	—	V-2
8	640581-[]	—	V-0
	640586-[]	—	V-2
9	640582-[]	—	V-0
	480706-[]	480707-[]	V-2
12	350720-[]	350782-[]	V-0
	480708-[]	480709-[]	V-2
15	350735-[]	350783-[]	V-0
	480710-[]	480711-[]	V-2
	350736-[]	350784-[]	V-0

Figure 5

COMMERCIAL MATE-N-LOK HOUSING		
NO. OF CIRCUITS	PLUG	CAP
1	480349-[]	480350-[]
	480349-[]	480351-[]
2	480318-[] †	480319-[] †
	480303-[] †	480305-[] †
3	480304-[] †	480305-[] †
	480424-[] †	480426-[] †
4	480425-[] †	480426-[] †
	480270-[] †	480271-[]
6	480273-[] †	480276-[] †
	480270-[] †	480340-[]
	480270-[] †	—
8	480283-[] †	480284-[]
	480283-[] †	480345-[]
9	480274-[] †	480277-[] †
10	480285-[] †	480286-[]
	480285-[] †	480339-[]
12	480275-[] †	480278-[] †
	480287-[] †	480288-[]
15	480323-[] †	480324-[] †
16	480438-[] †	480439-[]

† Housing accepts double-wire applications where individual insulation diameters do not exceed 2.92 mm [.115 in.].

Figure 6

5. REVISION SUMMARY

Since the previous version of this document, the following changes were made:

- Corrected part number in Figure 1.