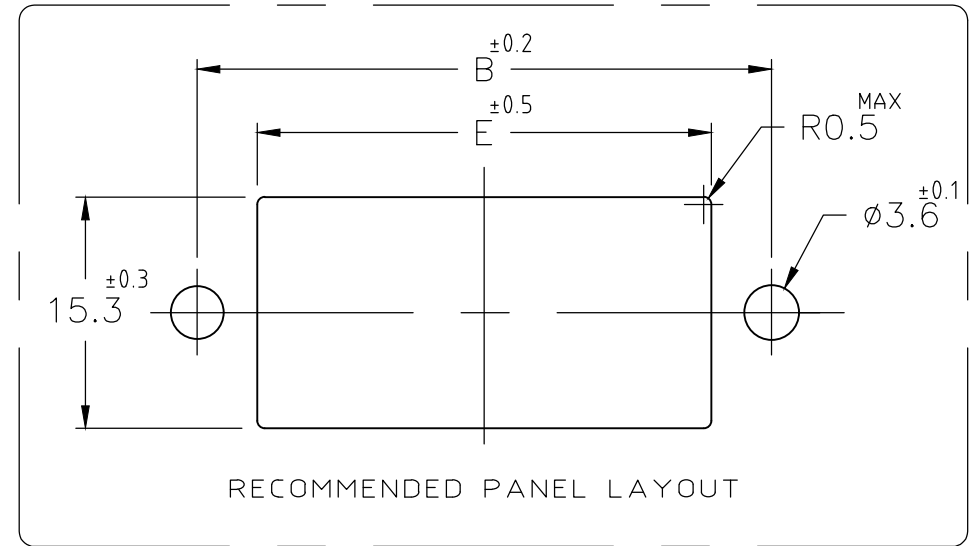


P	LTR	DESCRIPTION	DATE	DWN	APVD
	F	REVISED PER ECR-20-008263	10JUN2020	M.J	E.I

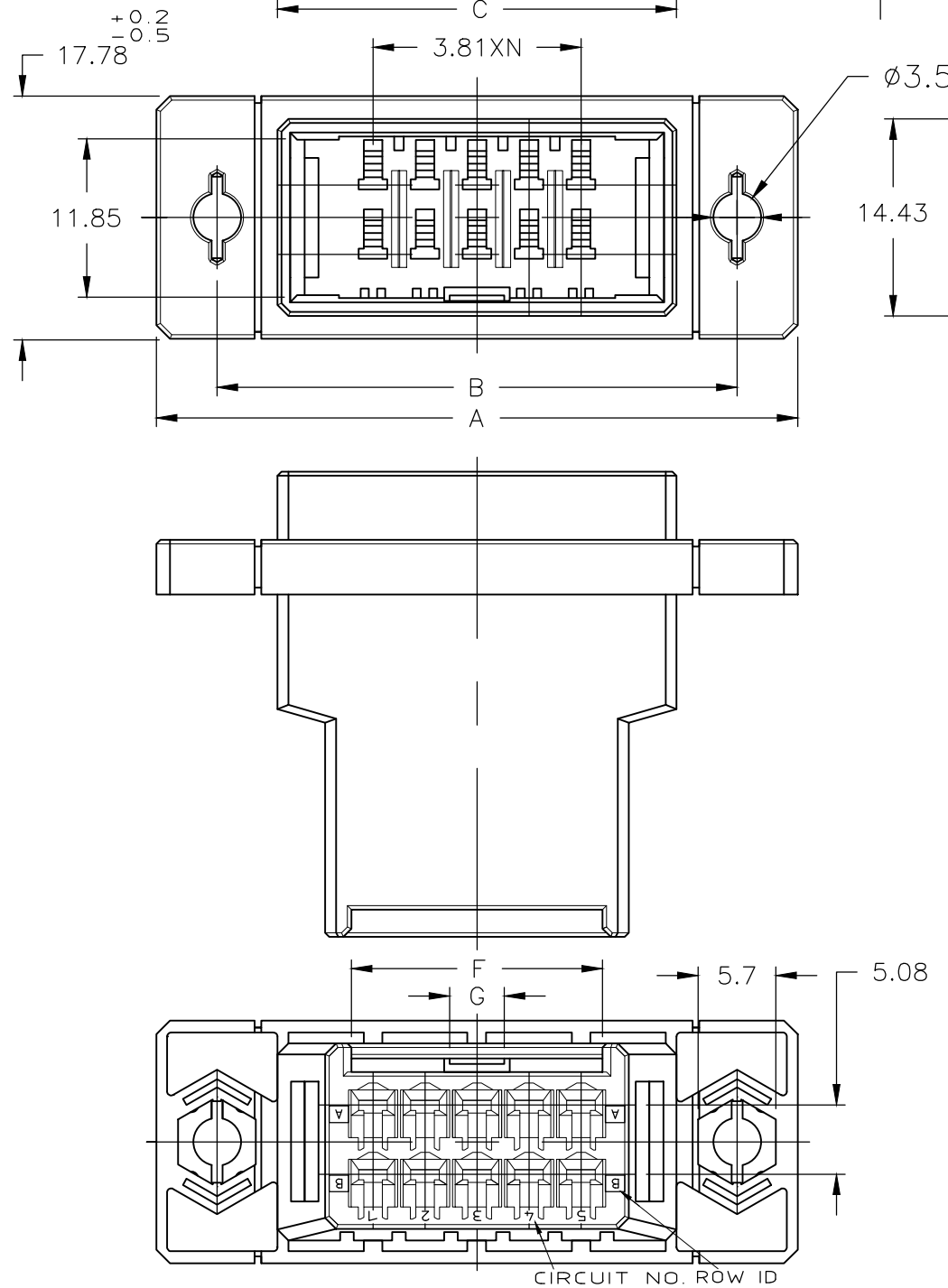
勝特力電材超市-龍山店 886-3-5773766
 勝特力電材超市-光復店 886-3-5729570
 勝特力電子(上海) 86-21-34970699
 勝特力電子(深圳) 86-755-83298787
<http://www.100y.com.tw>



△ MATERIAL: GLASS FIELD THERMO PLASTIC, POLYESTER
 COLOR: BLACK
~~△ TO COAT ALL SURFACE OF HOUSING WITH TEFLON~~
 3 PANEL ATTACHMENT RECOMMENDATION M3 SCREW

FINISH	POS.	DIMENSION	A	B	C	D	E	F	G	N	PART NUMBER	
OBSOLETE	△		20	67	58	48.29	41.29	49.2	18.4	4	9	178803-8
			16	59	50	40.67	33.67	41.6	18.4	4	7	178803-7
			12	51	42	33.05	26.05	34	18.4	4	5	178803-6
			10	47	38	29.24	22.24	30.2	18.4	4	4	178803-5
			6	40	31	21.62	14.62	22.6	8.4	2	2	178803-3

THIS DRAWING IS A CONTROLLED DOCUMENT.		DWN	04MAR1992		TE Connectivity	
		CHK	05MAR1992			
		H.OBATA		NAME		
		S.MANABE		PRODUCT SPEC		
		APVD		05MAR1992		
		APPLICATION SPEC		-		
		SIZE	CAGE CODE	DRAWING NO	RESTRICTED TO	
		A3	00779	C-178803	-	
		CUSTOMER DRAWING		SCALE	2:1	
				SHEET	1 OF 1	
				REV	F	





Dynamic series panel mount type

Table of contents

1	INTRODUCTION	2
2	SUPPORTING DOCUMENTS	2
2.1	Customer drawings	2
2.2	Product specification	2
3	DESCRIPTION	2
4	REQUIREMENTS.....	3
4.1	Applicable Fixture.....	3
4.2	Assemble connector to Panel with Screw and Nut.....	4
4.2.1	Panel Dimensions	4
4.2.2	Procedure of assemble	4
4.3	Assemble connector to Panel with PUSH RIVET	5
4.3.1	Panel Dimensions	5
4.3.2	Procedure of assemble	5

1 INTRODUCTION

This specification contains the regulations for panel mount process of Dynamic series.

2 SUPPORTING DOCUMENTS

2.1 Customer drawings

Please refer to customer drawings of Dynamic series.

2.2 Product specification

The product specifications of the used articles are to be taken into account. The product specification describes the technical data as e.g. regulations, approvals, temperature range and rated voltage.

3 DESCRIPTION

This application specification describes the panel mount type of Dynamic series.

The listed terms are used in the specification as shown Dynamic D3200 as example in figure 1.

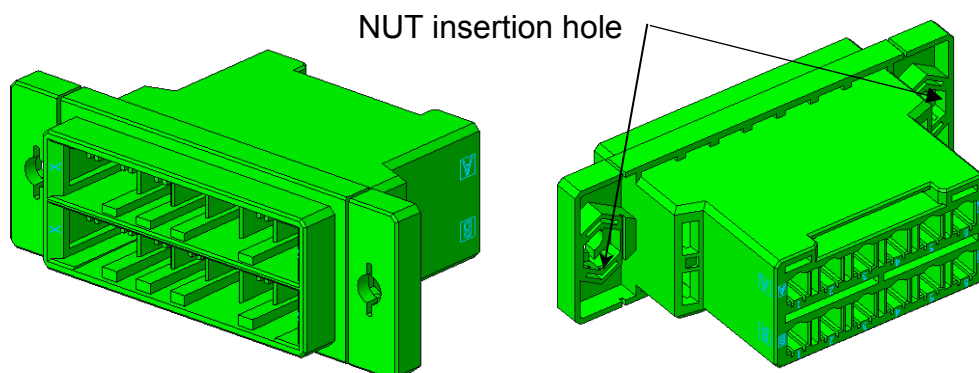


Figure: 1



4 REQUIREMENTS

4.1 Applicable Fixture

Please refer to Table.1.

Table:1

Method	P/N	Description	Assembly process
Screw and Nut	Screw	Commercial goods M3 Screw	See 4.2.
	Hexagon Nut	Commercial goods M3 Nut	
PUSH RIVET	900128-1	Panel Thickness 0.3~1.3 Retention force 127.4N Min (Two push rivets required)	See 4.3.
	900128-2	Panel Thickness 1.3~2.3 Retention force 127.4N Min (Two push rivets required)	
	900128-3	Panel Thickness 2.8~3.8 Retention force 127.4N Min (Two push rivets required)	

4.2 Assemble connector to Panel with Screw and Nut

4.2.1 Panel Dimensions

Please refer to the Customer drawing.

4.2.2 Procedure of assemble

- I. Set the NUT at the insertion holes of connector as shown Figure 2.

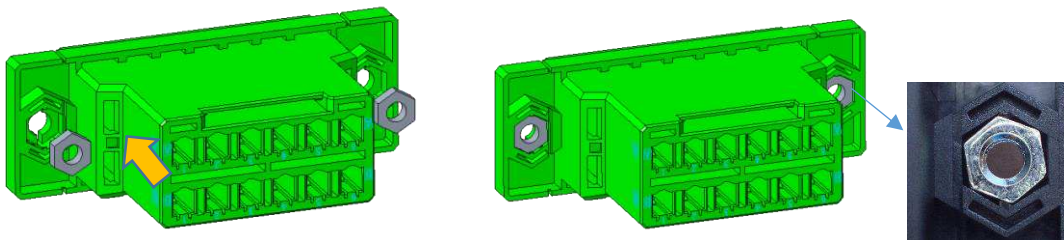


Figure 2

- II. Set to the panel from opposite area of the NUT as shown Figure 3.

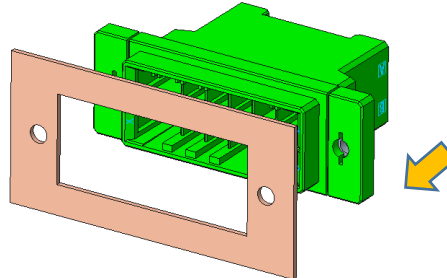


Figure 3

- III. Fasten the screw with Torque 0.315N·m Max. as shown Figure 4.

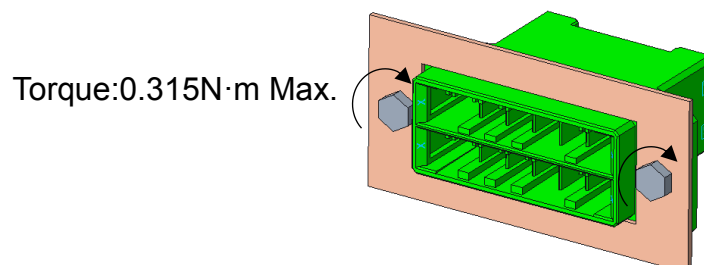


Figure 4

4.3 Assemble connector to Panel with PUSH RIVET

4.3.1 Panel Dimensions

Please refer to the Customer drawing.

4.3.2 Procedure of assemble

After set panel, push the PUSH RIVET as shown Figure 5.

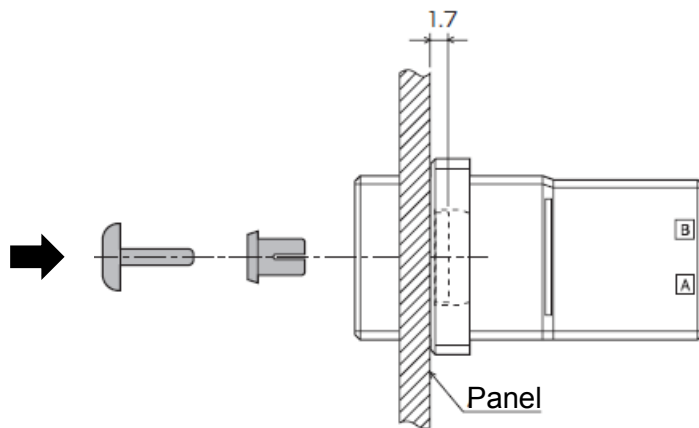


Figure 6