

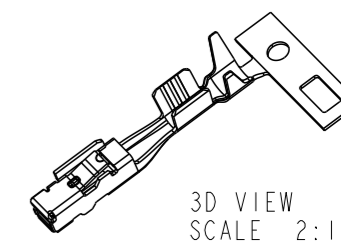
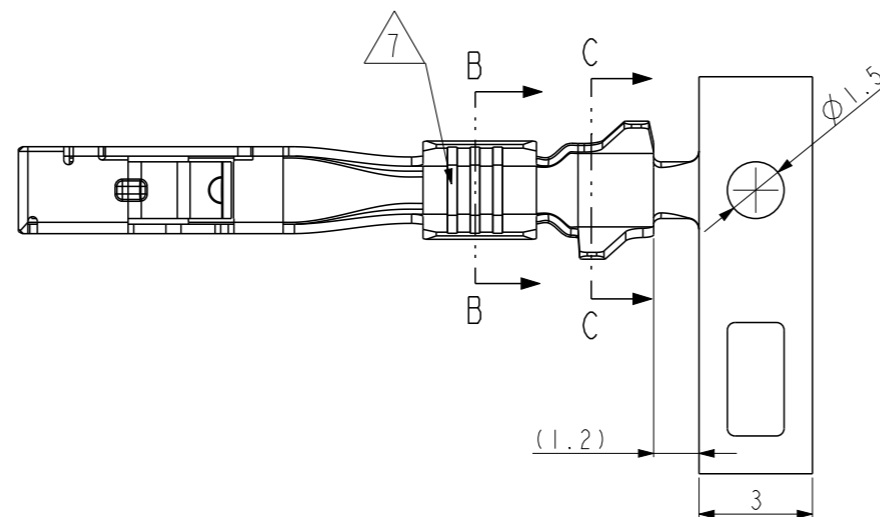
LOC  
DS

DIST  
-

REVISIONS

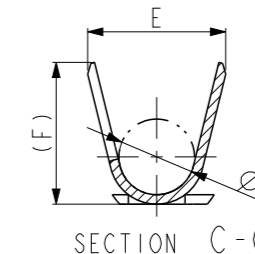
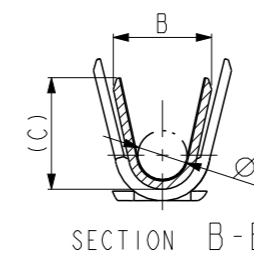
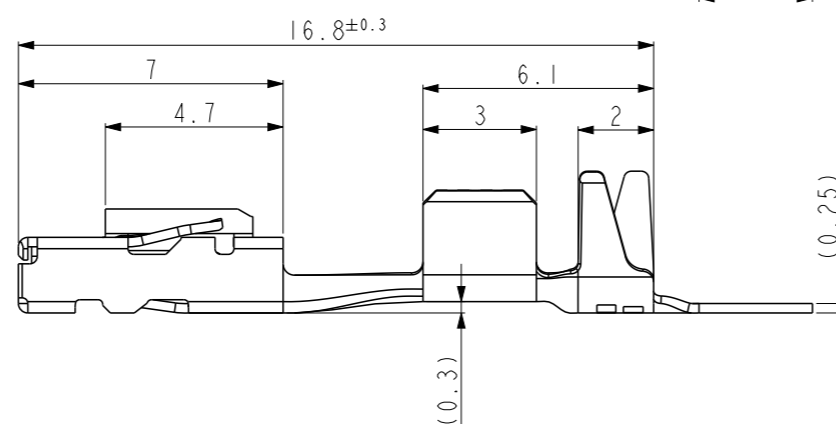
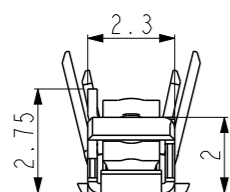
P	LTR	DESCRIPTION	DATE	DWN	APVD
	A5	REVISED (ECR-23-167987)	02.MAR'23	JW	KT

勝特力電材超市-龍山店 886-3-5773766  
 勝特力電材超市-光復店 886-3-5729570  
 勝特力電子(上海) 86-21-34970699  
 勝特力電子(深圳) 86-755-83298787  
<http://www.100y.com.tw>

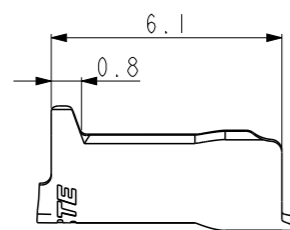
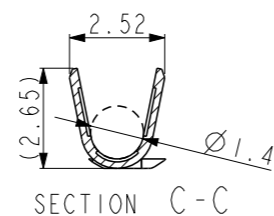
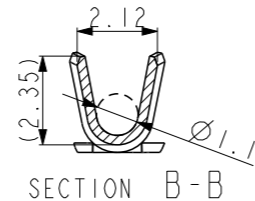
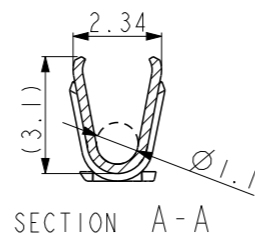
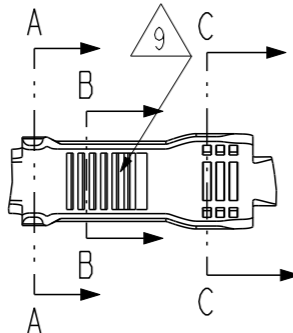
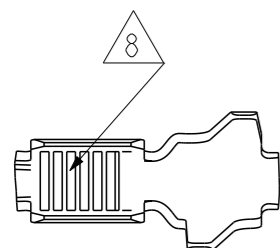


NOTES;

- 1 MATERIAL: CuNiSi ALLOY
- 2 FINISH: PRE-TIN PLATED
- 3. GENERAL TOLERANCE:  $\pm 0.2$ ,  $\pm 3^\circ$
- 4. THIS PRODUCT IS DESIGNED TO BE COMPATIBLE WITH UN-SEALED APPLICATIONS.
- 5. APPLICATOR FEED: 10.0
- 6. MATING TAB THICKNESS:  $0.63 \pm 0.03$
- 7 THREE SERRATIONS CENTERED IN WIRE BARREL
- 8 SEVEN SERRATIONS CENTERED IN WIRE BARREL
- 9 COMBINED BARREL AND SEVEN SERRATIONS



PRELIMINARY - NOT RELEASED YET



7	(2.9)	2.8	Ø1.7	(2.3)	2.2	Ø1.1	1.4 - 1.9	0.5 - 0.75SQ	SELECTIVE GOLD	1	1	060 REC GOLD (S)	1-2109006-2
7	(2.45)	2.4	Ø1.3	(1.7)	1.7	Ø0.8	1.0 - 1.5	0.22 - 0.35SQ	SELECTIVE GOLD	1	1	060 REC GOLD (SS)	1-2109006-1
8	(3.75)	3.65	Ø2.0	(2.95)	2.6	Ø1.3	Ø1.8	AL 1.25SQ	2	1	1	AL 060 REC (M)	8-2109006-3
8	(2.9)	2.8	Ø1.7	(2.3)	2.2	Ø1.1	Ø1.4	AL 0.75SQ	2	1	1	AL 060 RECEPT (S)	8-2109006-2
9	(2.65)	2.52	Ø1.4	(2.35)	2.12	Ø1.1	Ø1.4	AL 0.75SQ	2	2	1	AL 060 RECEPT	9-2109006-2
7	(3.75)	3.65	Ø2.0	(2.95)	2.6	Ø1.3	1.8 - 2.4	0.85 - 1.25SQ	2	1	1	060 RECEPT. (M)	2109006-3
7	(2.9)	2.8	Ø1.7	(2.3)	2.2	Ø1.1	1.4 - 1.9	0.5 - 0.75SQ	2	1	1	060 RECEPT. (S)	2109006-2
7	(2.45)	2.4	Ø1.3	(1.7)	1.7	Ø0.8	1.0 - 1.5	0.22 - 0.35SQ	2	1	1	060 RECEPT. (SS)	2109006-1
SHAPE	(F)	E	ØD	(C)	B	ØA	INSUL RANGE	WIRE RANGE	FINISH	MATERIAL		DESCRIPTION	PART NO.

THIS DRAWING IS A CONTROLLED DOCUMENT.

DWN  
KT JUNG

CHK  
KT LIM

APVD  
HG CHO

PRODUCT SPEC  
108-61116

APPLICATION SPEC  
114-61036

WEIGHT  
-

CUSTOMER DRAWING

**STE** TE Connectivity

.060 RECEPT. CONTACTS

SIZE	CAGE CODE	DRAWING NO	RESTRICTED TO
------	-----------	------------	---------------

A3	00779	C-2109006	-
----	-------	-----------	---

SCALE	SHEET	OF	REV
5:1	1	1	A5

DIMENSIONS:	TOLERANCES UNLESS OTHERWISE SPECIFIED:
mm	
0 PLC	±
1 PLC	±
2 PLC	±
3 PLC	±
4 PLC	±
ANGLES	±
FINISH	2

MISSING DIMENSIONS ARE SAME WITH THREE SERRATIONS



## .060 Tab / Recep. Contacts

### 1. SCOPE

This specification covers the special guidelines for the application of the .060 Tab/Recep contacts. The instructions are intended primarily for automatic or semi-automatic application of all versions. The various .060 Tab/Recep contacts are listed and sorted by their wire ranges and crimping.

이 시방서는 .060 Tab/Recep 단자의 압착을 위한 지침서이다.

설명서는 자동 혹은 반자동 압착을 위해 우선적으로 참조된다.

다양한 .060 Tab/Recep. 단자는 전선 종류와 압착에 의해 구분된다.

### 2. REFERENCED DOCUMENTS

#### 2.1 Customer Drawings

There are 2 drawings 2109005 and 2109006 with the measures and materials of the contacts. In the case of a conflict between this document and the customer drawing, the customer drawing takes precedence.

도면 2109005 와 2109006 은 단자의 치수와 원재료가 포함되어 있다.

이 문서와 고객 도면 사이에 상이한 것이 있으면, 고객 도면을 우선시 한다.

#### 2.2 Product Specification

The Product Specification 108- 61116 describes the characteristics of these contacts, together with the electrical and mechanical requirements.

제품 시방서 108-61116 은 전기적, 기계적 요구 조건과 함께 이 단자의 특성을 나타낸다.

#### 2.3 Application Specification

The general guidelines laid down in Application Specifications 114-18022.

일반적인 지침서는 압착 시방서 114-18022 을 참조하십시오.

#### 2.4 Instruction Sheet for Rework: 411-61008

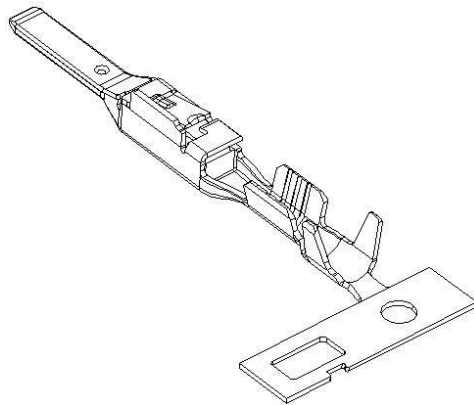
작업 지시서: 411-61008

### 3. DESCRIPTION OF NOMENCLATURE

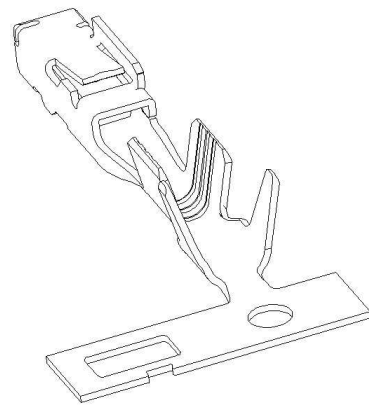
The terms shown below are used in the specification.

아래의 용어가 시방서에 사용된다.

#### 3.1 Contacts



Tab



Recep.

Fig. 1

3.2 Contacts with insulation crimp

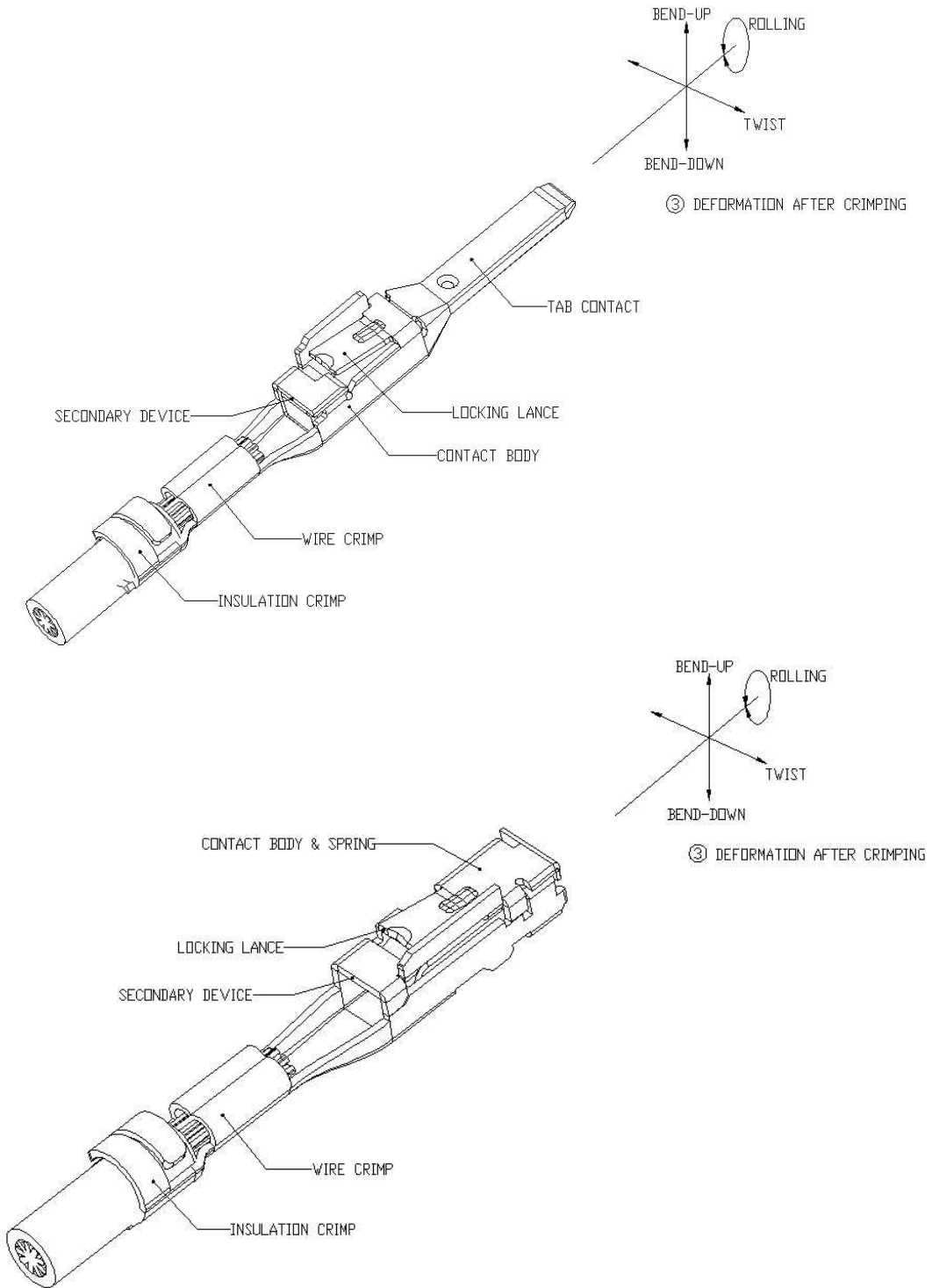


Fig. 2

3.3 Crimp design

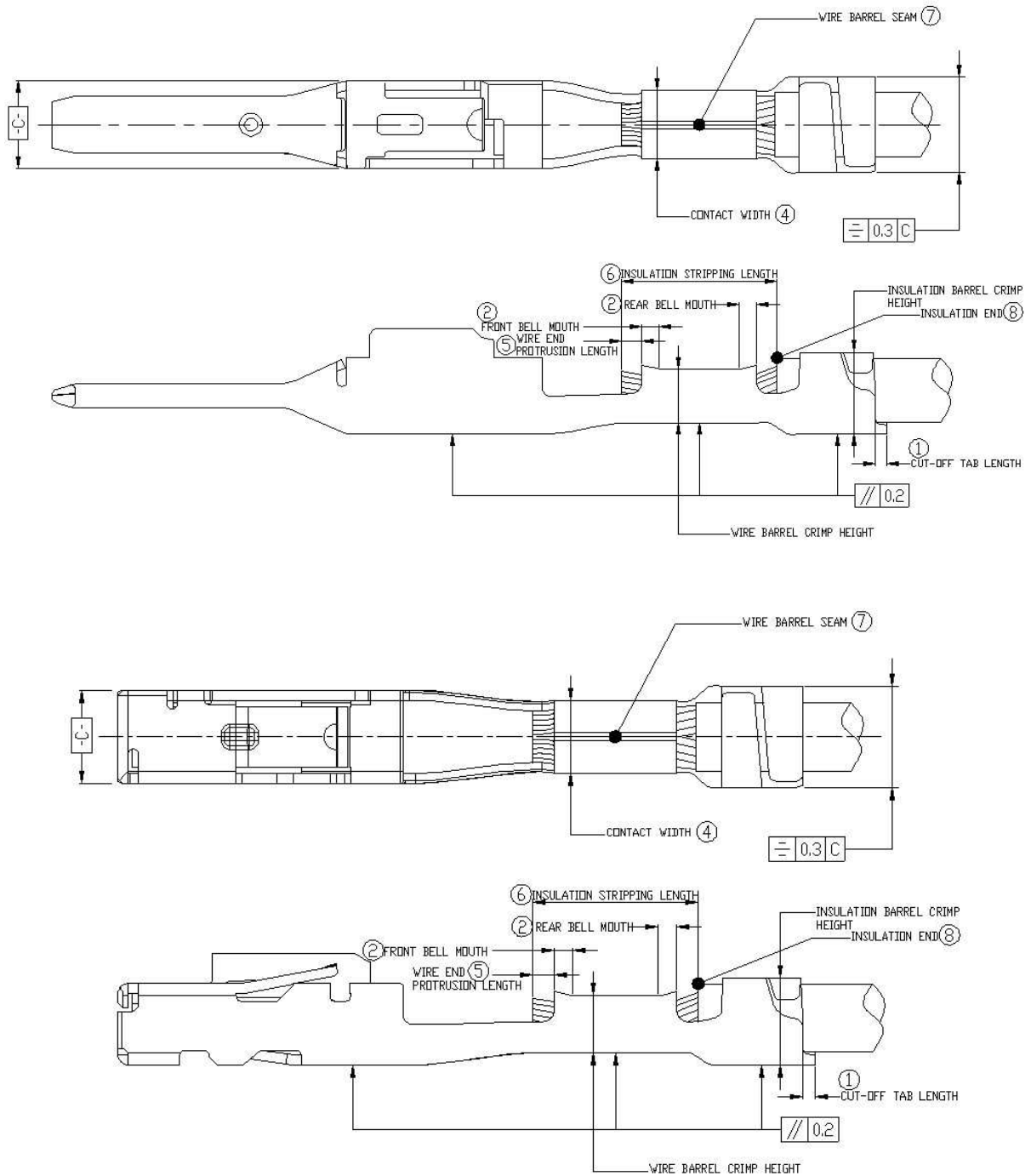


Fig. 3

**4. REQUIREMENTS**

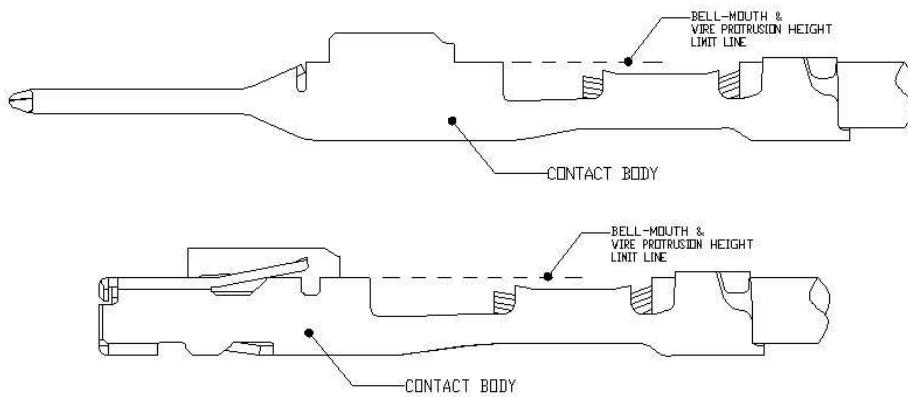
No.	Checking Items	Requirements	Remarks
1	Deformation after Crimping	Bend	-2°, +3° Max.
		Twist	±3° Max.
		Rolling	±10° Max.
2	Cut-off Tab Length	0.3 mm Max.	Fig. 3 ①
3	Bell-mouth	Front	0.3 mm Max.
		Rear	0.3 ± 0.2 mm
4	Contact Width after Crimping	CB <sub>1</sub> +0.2 mm Max.	Fig. 3 ④
5	Wire-end Protrusion Length	0.3 ~ 0.8 mm	Fig. 3 ⑤
6	Insulation Stripping Length	4.0 ± 0.3 mm	Fig. 3 ⑥
7	Wire Barrel Seam	Seam must be closed (No strand looses out of the seam)	Fig. 3 ⑦
8	Insulation End	Insulation End must be between Wire Barrel and Insulation Barrel	Fig. 3 ⑧

**Caution** Height of front bell-mouth after crimping allows Max 2.0mm from bottom of contact body.

That is, the height must be same or less than the top of contact body.

압착 후 Front bell-mouth 의 높이는 단자의 바닥 면에서 최대 2.0mm 까지 허용한다.

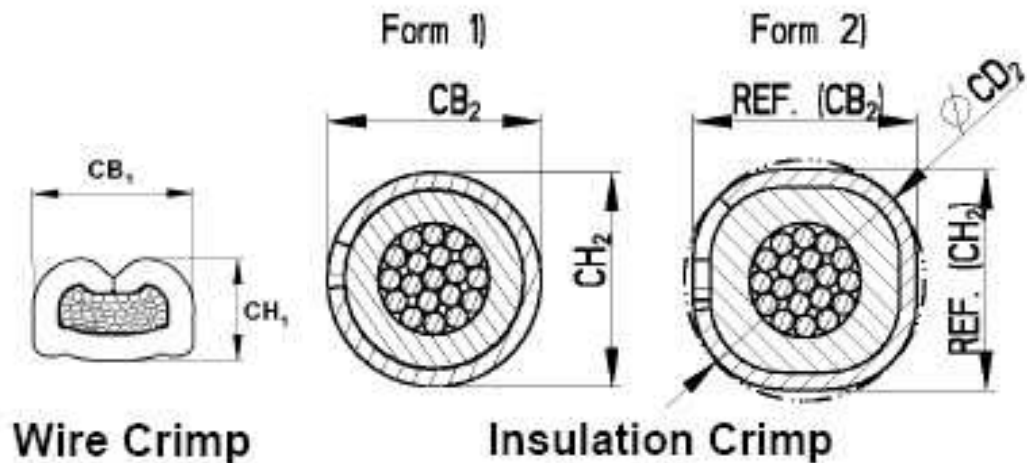
즉, 높이는 단자의 상단과 동일하거나 낮아야만 한다.



**5. CRIMP DATA**

**Application Crimp:**

Contact P/N	Wire Range (mm <sup>2</sup> )	Insulation Range Ø (mm)	Strip Length (mm)	Wire Barrel Crimp		Insulation Barrel Crimp		
				Width(CB <sub>1</sub> ) (mm)	Height (CH <sub>1</sub> ) (mm)	Width(CB <sub>2</sub> ) (mm)	Height(CH <sub>2</sub> ) (mm)	Crimp Surrounding Circle(CD <sub>2</sub> ) (mm)
0-2109005-1 0-/1-2109006-1	0.22	1.0-1.05	4.0 ± 0.3	1.27 "F"	0.865 ± 0.025	1.78 REF "O" Wrap	1.85 Max. From 1)	-
	0.3/0.35	1.2-1.5			0.965 ± 0.025			
0-2109005-2 0-/1-2109006-2	0.5	1.4-1.7		1.57 "F"	1.03 ± 0.03	1.83 REF "O" Wrap	2.05 REF	2.1 Max. Form 2)
	0.75	1.7-1.9			1.16 ± 0.03			
0-2109005-3 0-2109006-3	0.85	1.8-1.9		1.78 "F"	1.20 ± 0.03	2.29 REF "O" Wrap	2.45 REF	2.5 Max. Form 2)
	1.0	1.9-2.1			1.31 ± 0.03			
	1.25	2.1-2.4			1.38 ± 0.03			
	0.3X0.3**	2X1.2~1.4			1.16 ± 0.03			2.5 Max
8-2109005-2 8-2109006-2	0.75 (Aluminum)	1.3-1.5		1.57 "F"	1.2 ± 0.05	1.83 REF "O" Wrap	2.05 REF	2.1 Max. Form 2)
8-2109005-3 8-2109006-3	1.25 (Aluminum)	1.7-1.9		1.78 "F"	1.35 ± 0.05	2.29 REF "O" Wrap	2.45 REF	2.5 Max. Form 2)





Note: (1) Crimp Width dimension are not the product width after crimping, but given by the width of crimper slot for reference  
 (2) Control the width of wire barrel within CB<sub>1</sub> +0.2mm after crimp.  
 \*\* Caution Crimp data for contacts with double crimp. This is restricted suitable.

(1) Crimp 폭 치수는 압착 후 제품의 폭은 아니지만, 참조용으로 Crimper 의 폭으로 주어진다.  
 (2) Wire Barrel 의 폭은 압착 후 CB1 +0.2mm 이내에서 관리하십시오.  
 \*\* 주의 2 wire 압착 단자를 위한 Crimp 자료. 이것은 제한적으로 안정적이다.

**6. APPLICABLE WIRE RANGE**

Wire range based on CHFUS (ISO 6722), AVSS (JASO D 611), FLRY-B (ISO 6722, DIN 72551)

Nominal Wire Size	Number of Strands / Diameter of Strand (mm)	Calculated Cross Section Area (mm <sup>2</sup> )	Overall outside Diameter	
			Normal	Maximum
0.22	7 / Compressed	0.2425	1.0	1.05
0.3	7 / 0.26	0.3717	1.4	1.5
0.35	12 / 0.21	0.4156	1.2	1.4
0.5	7 / 0.32	0.5630	1.6	1.7
0.75	24 / 0.21	0.8313	1.7	1.9
0.85	19 / 0.24	0.8595	1.8	1.9
1.0	32 / 0.21	1.1084	1.9	2.1
1.25	19 / 0.29	1.2550	2.1	2.2

For Aluminum wire

Nominal Wire Size	Number of Strands / Diameter of Strand (mm)	Calculated Cross Section Area (mm <sup>2</sup> )	Overall outside Diameter	
			Minimum	Maximum
0.75	11 / Compressed	0.778	1.3	1.5
1.25	16 / Compressed	1.368	1.7	1.9