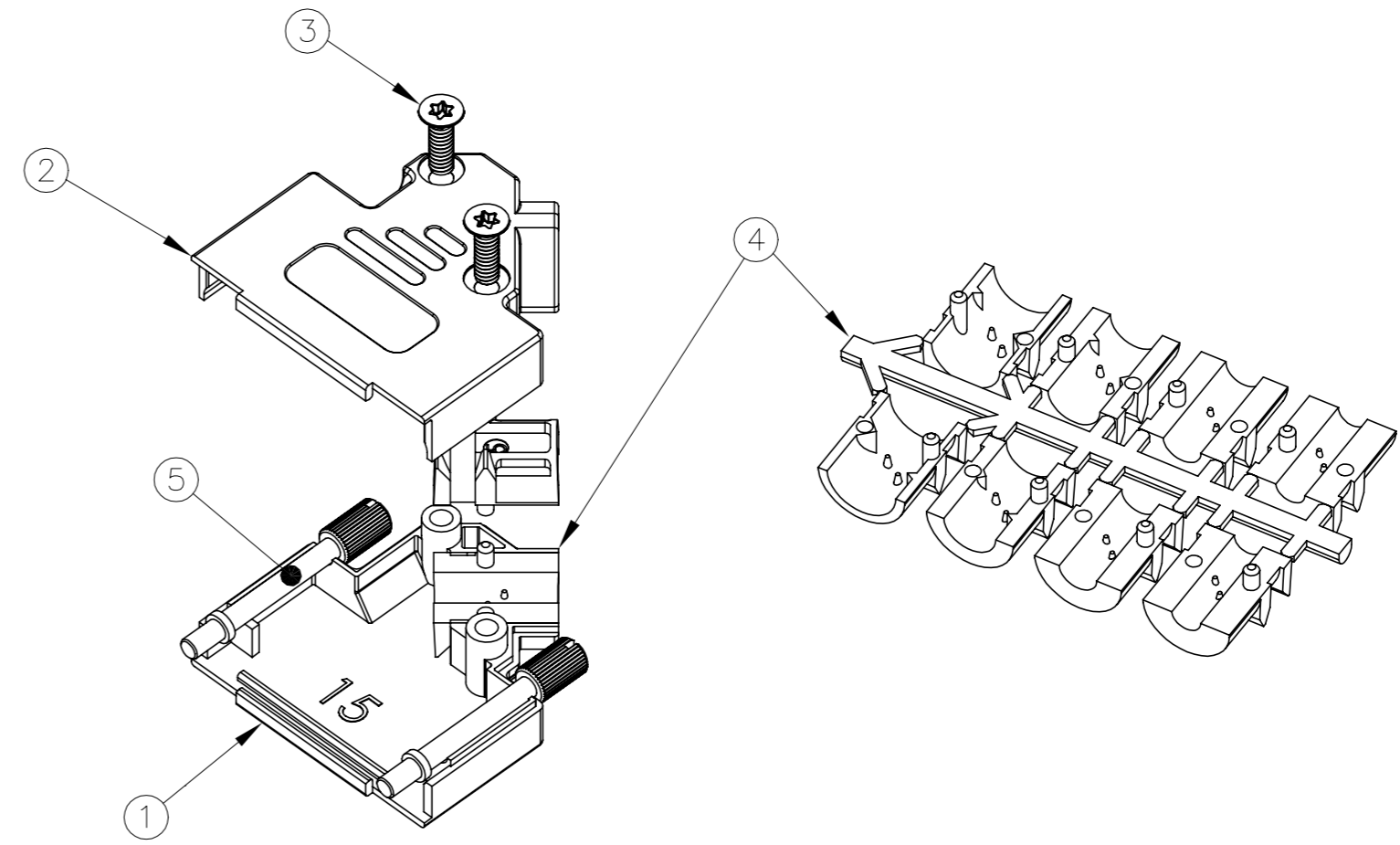
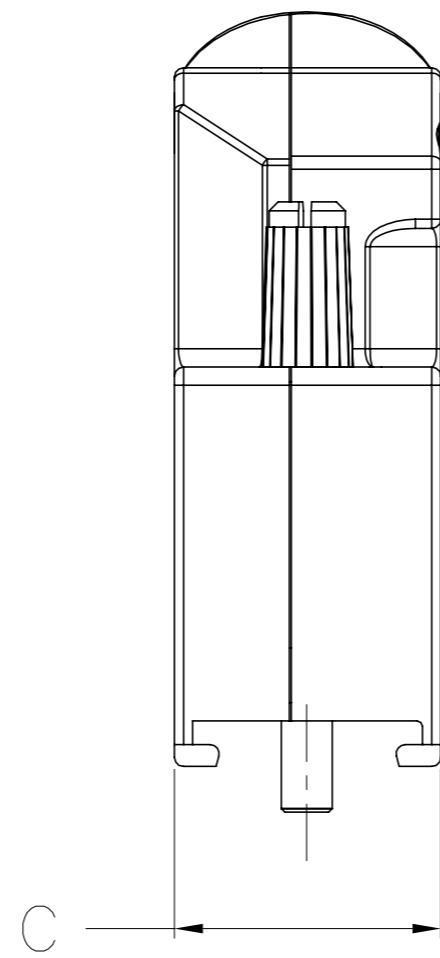
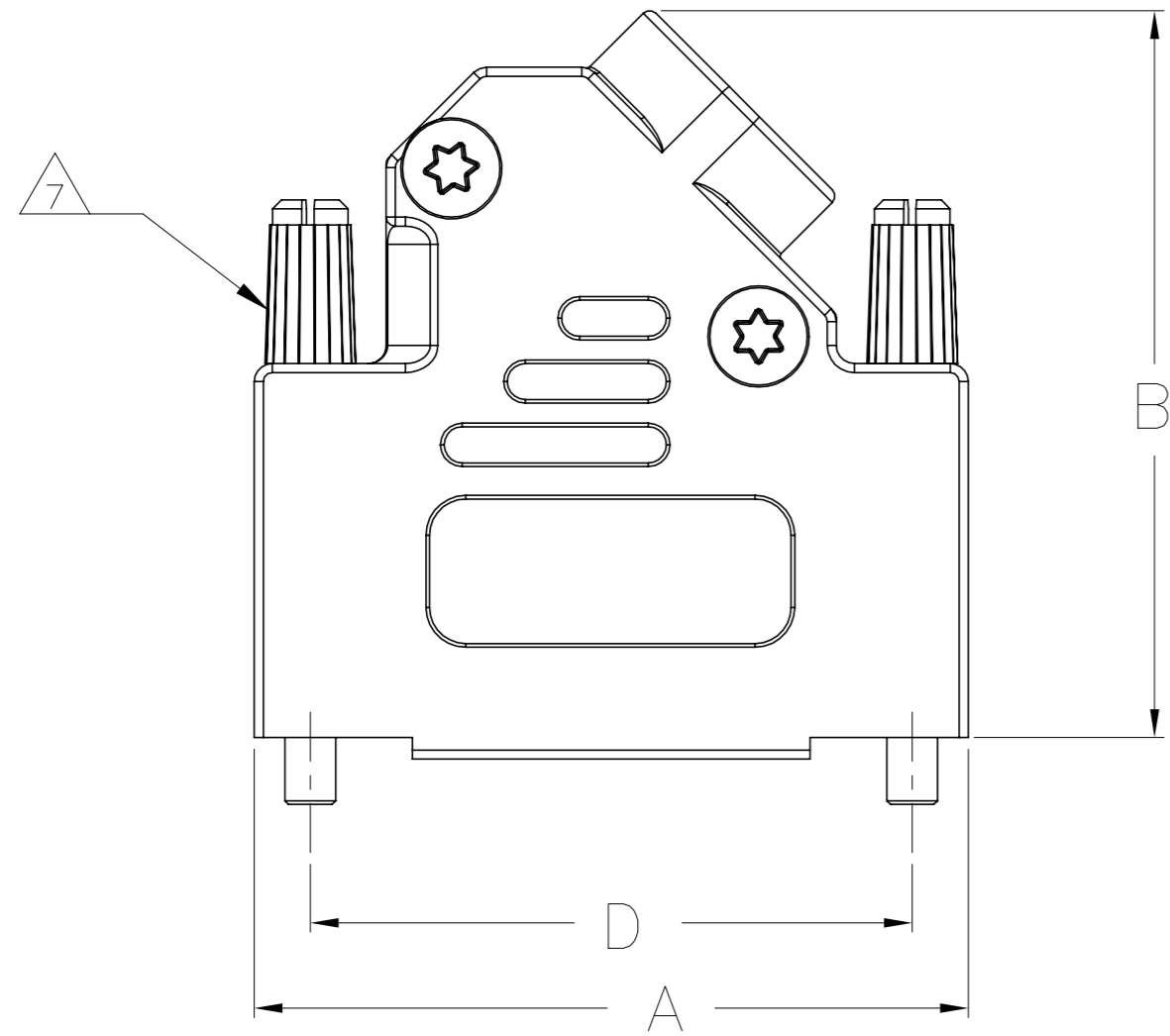


REVISIONS					
P	LTR	DESCRIPTION	DATE	DWN	APVD
	N1	REVISED PER ECN-22-183424	14NOV2022	PT	SZ



1. FOR ASSEMBLY DETAILS, REFER TO LEAFLET 2227518-1.

7 JACKSCREW QUANTITY:
 9 WAY ASSEMBLY: 1 JACKSCREW
 15 WAY ASSEMBLY: 2 JACKSCREWS
 25 WAY ASSEMBLY: 2 JACKSCREWS
 37 WAY ASSEMBLY: 2 JACKSCREWS

勝特力電材超市-龍山店 886-3-5773766
 勝特力電材超市-光復店 886-3-5729570
 勝特力電子(上海) 86-21-34970699
 勝特力電子(深圳) 86-755-83298787
<http://www.100y.com.tw>

2 BULK PACKAGED BACKSHELL ASSEMBLIES:
 ITEM 1, 100 PCS LOOSE IN BOX. ITEMS 2
 THRU 5, 100 TIMES QTY SHOWN IN TABLE IN
 1 BAG FOR EACH ITEM. ALL BAGS IN 1
 BOX WITH (1) 2227518-1 LEAFLET.

3 INDIVIDUALLY PACKAGED SHELL ASSEMBLIES:
 1 BAG CONTAINS ALL COMPONENTS FOR 1
 COMPLETE ASSEMBLY. 100 BAGS PER BOX,
 (1) 2227518-1 LEAFLET PER BOX.

4. TERMINATES 4.0-13.0 CABLE DIAMETERS.

5. 15 POSITION SHOWN.

6 TRIVALENT CHROMIUM CHROMATE COATING
 OVER ZINC PLATING.

8. OPTIONAL CABLE CRIMP KIT AVAILABLE
 FOR 6.0-9.5 DIAMETER CABLE. SEE
 1478764

3	63.5	14.6	40.2	69.7	TORX	4-40 UNC	4	37 WAY	5-1478763-4
3	47.0	14.6	40.2	53.2	TORX	4-40 UNC	3	25 WAY	5-1478763-3
3	33.3	14.6	40.2	39.5	TORX	4-40 UNC	2	15 WAY	5-1478763-2
3	25.0	14.6	36.2	31.0	TORX	4-40 UNC	1	9 WAY	5-1478763-1
2	47.0	14.6	40.2	53.2	TORX	M3	3	25 WAY	4-1478763-7
2	33.3	14.6	40.2	39.5	TORX	M3	2	15 WAY	4-1478763-6
2	25.0	14.6	36.2	31.0	TORX	M3	1	9 WAY	4-1478763-5
2	63.5	14.6	40.2	69.7	TORX	4-40 UNC	4	37 WAY	3-1478763-7
2	47.0	14.6	40.2	53.2	TORX	4-40 UNC	3	25 WAY	2-1478763-5
2	33.3	14.6	40.2	39.5	TORX	4-40 UNC	2	15 WAY	1-1478763-5
2	25.0	14.6	36.2	31.0	TORX	4-40 UNC	1	9 WAY	1478763-9
PACKAGING	D	C	B	A	SELF TAPPING FIXING SCREW TYPE	JACKSCREW THREAD	SHELL SIZE	POSITION	PART NUMBER

5	JACKSCREW ASSEMBLY	POLYAMIDE, UL94 V2 KNOB CARBON STEEL SHAFT	BLACK 6	7
4	STRAIN RELIEF SET	POLYCARBONATE UL94 V0	BLACK	1
3	SELF TAPPING FIXING SCREW	CARBON STEEL	6	2
2	TOP BACKSHELL	ZINC	NICKEL	1
1	BOTTOM BACKSHELL	ZINC	NICKEL	1
ITEM	DESCRIPTION	MATERIAL	FINISH	QTY

THIS DRAWING IS A CONTROLLED DOCUMENT.
 DIMENSIONING AND TOLERANCING PER ASME Y14.5M-2009

DWN C. VALENTE 06JAN2011		TE Connectivity		
CHK C. ROHDE 06JAN2012		NAME ADK SERIES DIE-CAST BACKSHELL 45 DEGREE ENTRY		
APVD C. ROHDE 06JAN2012		SIZE A2	CAGE CODE 00779	DRAWING NO C=1478763
DIMENSIONS: mm		TOLERANCES UNLESS OTHERWISE SPECIFIED:		SCALE NTS
		0 PLC ± 0.5 1 PLC ± 0.5 2 PLC ± 0.5 3 PLC ± 0.5 4 PLC ± 0.5 ANGLES ± -		SHEET 1 of 1
MATERIAL SEE TABLE		FINISH -		REV N1

CUSTOMER DRAWING