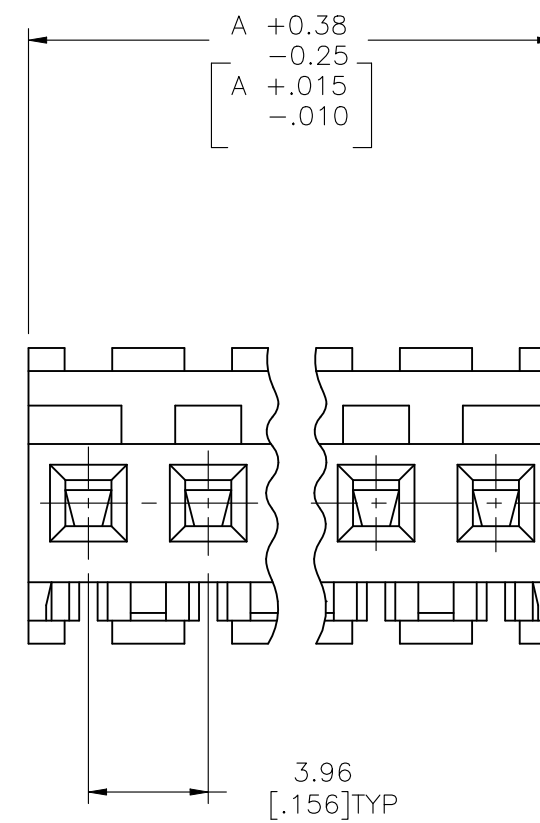
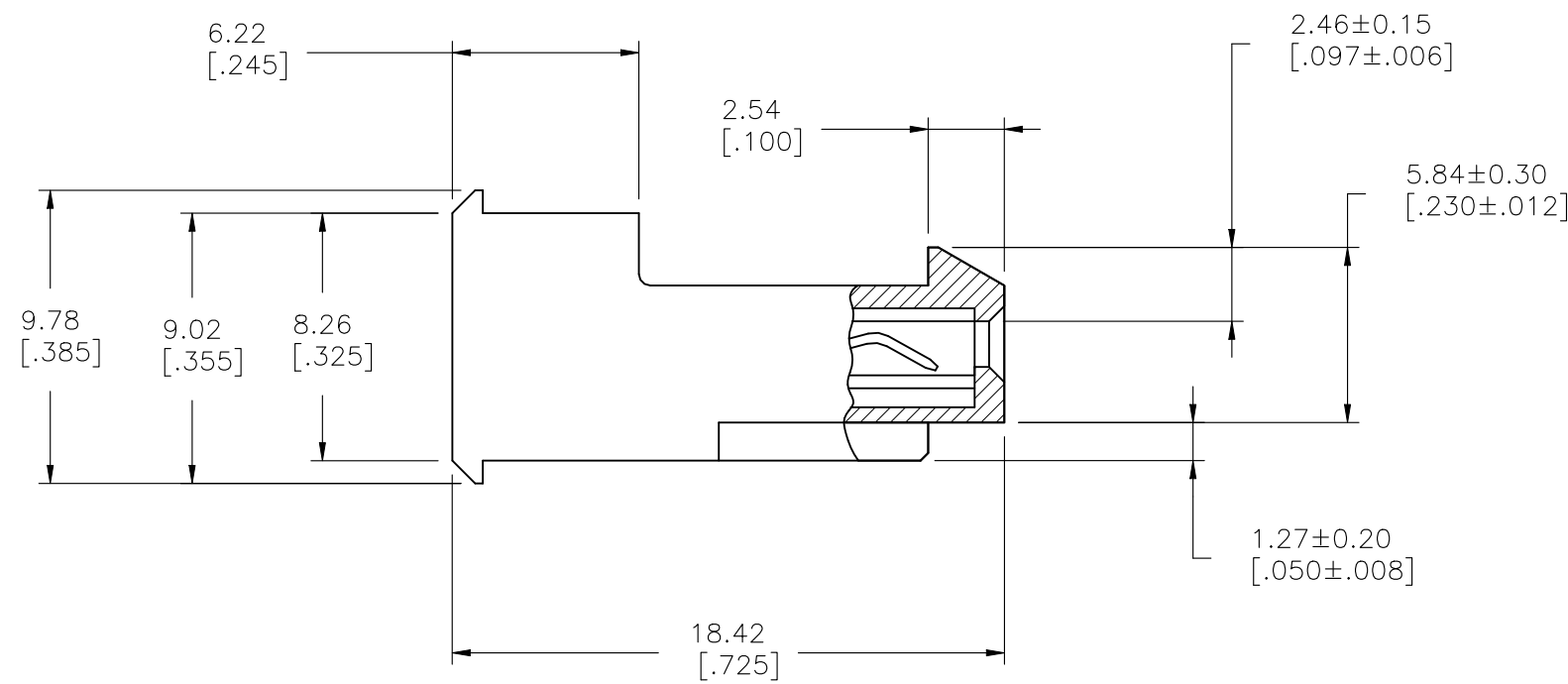
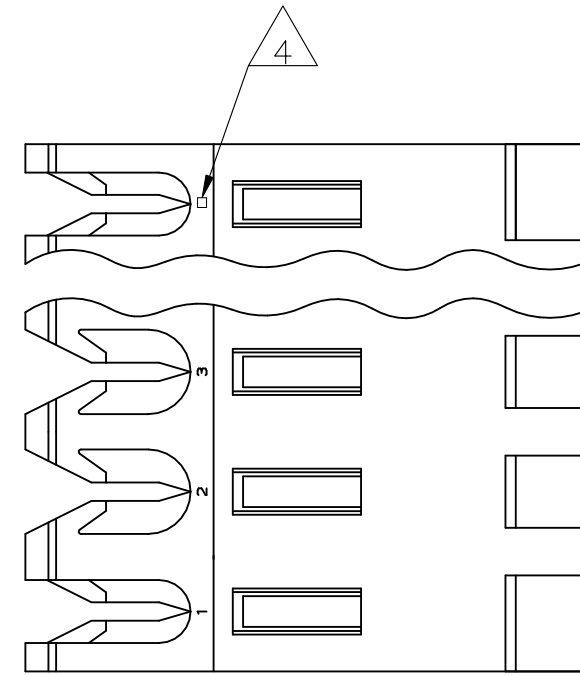


勝特力電材超市-龍山店 886-3-5773766
 勝特力電材超市-光復店 886-3-5729570
 勝特力電子(上海) 86-21-34970699
 勝特力電子(深圳) 86-755-83298787
<http://www.100y.com.tw>

REVISIONS					
P	LTR	DESCRIPTION	DATE	DWN	APVD
	U1	REVISED PER ECR-21-100170	22JAN2021	SS	VS



OBSOLETE	95.10[3.744]	24	5-640599-4
	91.13[3.588]	23	5-640599-3
	87.17[3.432]	22	5-640599-2
	83.21[3.276]	21	5-640599-1
	79.25[3.120]	20	5-640599-0
	75.29[2.964]	19	4-640599-9
	71.32[2.808]	18	4-640599-8
	67.36[2.652]	17	4-640599-7
	63.40[2.496]	16	4-640599-6
	59.44[2.340]	15	4-640599-5
	55.47[2.184]	14	4-640599-4
	51.51[2.028]	13	4-640599-3
	47.55[1.872]	12	4-640599-2
	43.59[1.716]	11	4-640599-1
	39.62[1.560]	10	4-640599-0
	35.66[1.404]	9	3-640599-9
	31.70[1.248]	8	3-640599-8
	27.74[1.092]	7	3-640599-7
	23.77[.936]	6	3-640599-6
	19.81[.780]	5	3-640599-5
	15.85[.624]	4	3-640599-4
	11.89[.468]	3	3-640599-3
	7.92[.312]	2	3-640599-2

△	SUPERSEDED BY 5-640599-4	95.10[3.744]	24	2-640599-4
△	SUPERSEDED BY 5-640599-3	91.13[3.588]	23	2-640599-3
△	SUPERSEDED BY 5-640599-2	87.17[3.432]	22	2-640599-2
△	SUPERSEDED BY 5-640599-1	83.21[3.276]	21	2-640599-1
△	SUPERSEDED BY 5-640599-0	79.25[3.120]	20	2-640599-0
△	SUPERSEDED BY 4-640599-9	75.29[2.964]	19	1-640599-9
△	SUPERSEDED BY 4-640599-8	71.32[2.808]	18	1-640599-8
△	SUPERSEDED BY 4-640599-7	67.36[2.652]	17	1-640599-7
△	SUPERSEDED BY 4-640599-6	63.40[2.496]	16	1-640599-6
△	SUPERSEDED BY 4-640599-5	59.44[2.340]	15	1-640599-5
△	SUPERSEDED BY 4-640599-4	55.47[2.184]	14	1-640599-4
△	SUPERSEDED BY 4-640599-3	51.51[2.028]	13	1-640599-3
△	SUPERSEDED BY 4-640599-2	47.55[1.872]	12	1-640599-2
△	SUPERSEDED BY 4-640599-1	43.59[1.716]	11	1-640599-1
△	SUPERSEDED BY 4-640599-0	39.62[1.560]	10	1-640599-0
△	SUPERSEDED BY 3-640599-9	35.66[1.404]	9	1-640599-9
△	SUPERSEDED BY 3-640599-8	31.70[1.248]	8	1-640599-8
△	SUPERSEDED BY 3-640599-7	27.74[1.092]	7	1-640599-7
△	SUPERSEDED BY 3-640599-6	23.77[.936]	6	1-640599-6
△	SUPERSEDED BY 3-640599-5	19.81[.780]	5	1-640599-5
△	SUPERSEDED BY 3-640599-4	15.85[.624]	4	1-640599-4
△	SUPERSEDED BY 3-640599-3	11.89[.468]	3	1-640599-3
△	SUPERSEDED BY 3-640599-2	7.92[.312]	2	1-640599-2

- 1 MATERIAL: CONNECTOR - NYLON UL94-V2 (ORANGE).
CONTACTS - 0.30[.012] THICK COPPER ALLOY (BRIGHT TIN-LEAD 0.00203[.000080] MIN. THICK FOR CONTACTS 640599-2 THRU 2-640599-4] (MATTE WHISKER MITIGATED TIN 0.00203[.000080] MIN THICKNESS OVER NICKEL UNDERPLATE FOR 3-640599-2 THRU 5-640599-4).
- 2 CONTACTS ACCEPT 18 AWG WIRE WITH 2.41[.095] MAX INSULATION DIAMETER.
- 3 CONTACTS MUST ACCEPT 1.14±0.03[.045±.001] SQUARE POST AND REMAIN LOCKED IN POSITION.
- 4 IDENTIFICATION NUMBER FOR LAST CIRCUIT MAY NOT APPEAR ON ALL ASSEMBLIES.
- 5 DIMENSIONS IN BRACKETS ARE IN INCHES.
- 6 HOUSING FEATURES ARE: FEED-THRU WITH LOCKING RAMP.
- 7 OBSOLETE PARTS: OBSOLETE CIS STREAMLINING PER D.RENAUD/D.SINIS
- 8 OBSOLETE PARTS

THIS DRAWING IS A CONTROLLED DOCUMENT.		DWN S.CARPENTER 09JUL2003	TE Connectivity MTA-156 CONNECTOR ASSEMBLY, 18 AWG, STANDARD	
DIMENSIONS: mm [INCHES]		CHK D BOSSI 09JUL2003		
TOLERANCES UNLESS OTHERWISE SPECIFIED:		APVD D BOSSI 09JUL2003	NAME	
0 PLC ± - 1 PLC ± - 2 PLC ± - 3 PLC ± 0.13 [.005] 4 PLC ± - ANGLES ± -		PRODUCT SPEC 108-1051	DRAWING NO	
MATERIAL		APPLICATION SPEC 114-1020	SIZE A2	CAGE CODE 00779
FINISH		WEIGHT 0.000000	DRAWING NO C-640599	
		CUSTOMER DRAWING	SCALE 4:1	SHEET 1 OF 1
			REV U1	

3-640599-6 ✓ ACTIVE



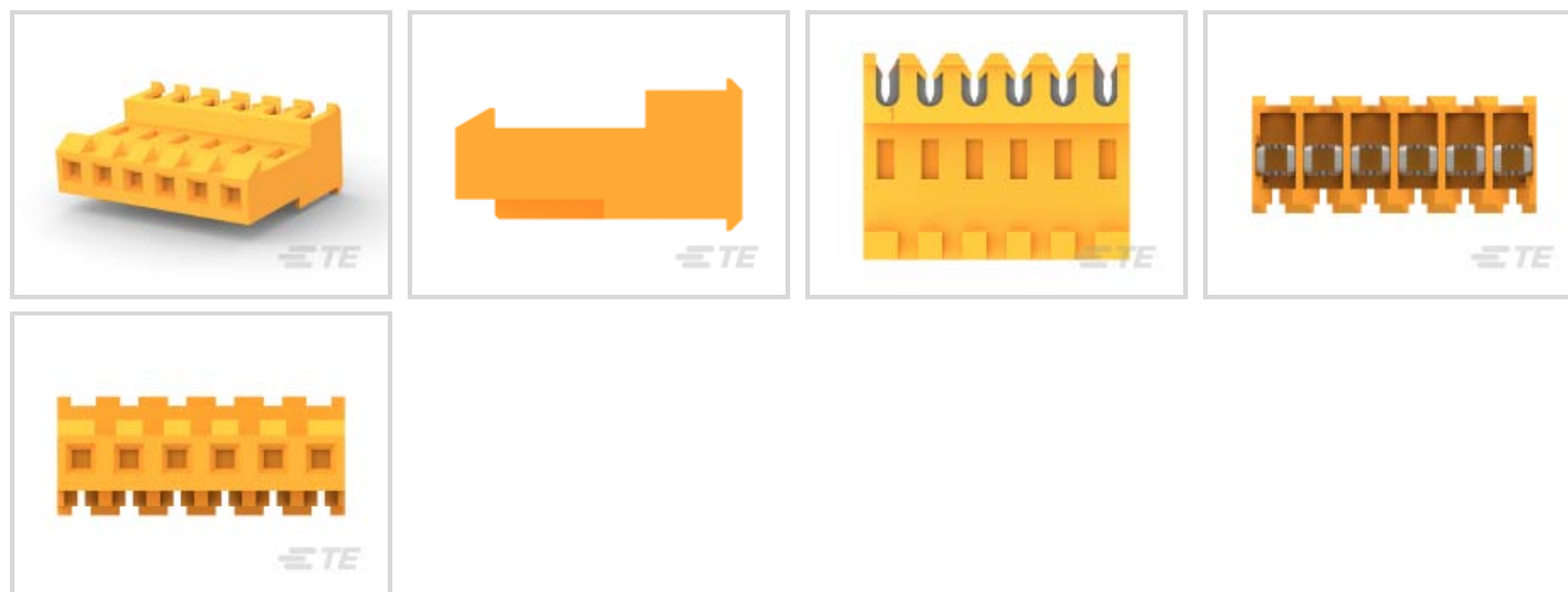
MTA 156

TE Internal #: 3-640599-6

Rectangular Power Connectors, Connector Assembly, Receptacle, Wire-to-Board, 6 Position, 3.96 mm [.156 in] Centerline, Wire & Cable, UL 94V-2, MTA 156

[View on TE.com >](#)

Connectors > Power Connectors > Rectangular Power > Rectangular Power Connectors



Rectangular Power Connector Type: **Connector Assembly**

Connector & Housing Type: **Receptacle**

Connector System: **Wire-to-Board**

Number of Positions: **6**

Centerline (Pitch): **3.96 mm [.156 in]**

Features

Product Type Features

Compatible With Discrete Wire Type	Stranded
Rectangular Power Connector Type	Connector Assembly
Connector & Housing Type	Receptacle
Connector System	Wire-to-Board
Sealable	No
Connector & Contact Terminates To	Wire & Cable

Configuration Features

Number of Positions	6
Number of Power Positions	6
Number of Rows	1

Electrical Characteristics

Operating Voltage	600 VAC
-------------------	---------

Body Features

Cable Exit Angle	90°
------------------	-----



Connector Profile	Standard
-------------------	----------

Contact Features

Contact Layout	Inline
Contact Underplating Material Thickness	30 µm [.762 µin]
Wire Contact Termination Area Plating Thickness	2.03 – 5.08 µm [80 – 200 µin]
Contact Mating Area Plating Material	Tin
Contact Mating Area Plating Material Finish	Matte
Contact Underplating Material	Nickel
Contact Base Material	Copper Alloy
Contact Current Rating (Max)	7 A
Contact Retention Within Housing	With
Contact Type	Receptacle
Wire Contact Termination Area Plating Material	Tin
Contact Mating Area Plating Material Thickness	2.03 – 5.08 µm [80 – 200 µin]

Termination Features

Termination Method to Wire & Cable	Insulation Displacement (IDC)
------------------------------------	-------------------------------

Mechanical Attachment

Strain Relief	With
Mating Retention	With
Mating Alignment	Without
Contact Retention Type Within Housing	Locking Lance
PCB Mount Alignment	Without
Panel Mount Feature	Without
PCB Mount Retention	Without
Mating Retention Type	Locking Ramp
Connector Mounting Type	Cable Mount (Free-Hanging)

Housing Features

Wire & Cable IDC Installation Type	Feed Through
Centerline (Pitch)	3.96 mm [.156 in]
Housing Color	Orange
Housing Material	Nylon

Dimensions



Connector Height	9.78 mm[.385 in]
Product Length	23.77 mm[.936 in]
Compatible Insulation Diameter Range	2.41 mm[.095 in]
Wire Size	.823 mm ²

Usage Conditions

Operating Temperature Range	-55 – 105 °C[-67 – 221 °F]
-----------------------------	----------------------------

Operation/Application

Circuit Application	Power
---------------------	-------

Industry Standards

CSA Rating	Certified, LR 7189
UL Rating	Recognized
Agency/Standard	CSA, UL
Approved Standards	UL E28476
UL Flammability Rating	UL 94V-2
Glow Wire Rating	Standard Part - Not Glow Wire

Packaging Features

Packaging Quantity	250
Packaging Method	Box & Carton

Product Compliance

[For compliance documentation, visit the product page on TE.com>](#)

EU RoHS Directive 2011/65/EU	Compliant
EU ELV Directive 2000/53/EC	Compliant
China RoHS 2 Directive MIIT Order No 32, 2016	No Restricted Materials Above Threshold
EU REACH Regulation (EC) No. 1907/2006	Current ECHA Candidate List: JUNE 2023 (235) Candidate List Declared Against: JAN 2023 (233) Does not contain REACH SVHC
Halogen Content	Low Halogen - Br, Cl, F, I < 900 ppm per homogenous material. Also BFR/CFR/PVC Free
Solder Process Capability	Not applicable for solder process capability

Product Compliance Disclaimer



This information is provided based on reasonable inquiry of our suppliers and represents our current actual knowledge based on the information they provided. This information is subject to change. The part numbers that TE has identified as EU RoHS compliant have a maximum concentration of 0.1% by weight in homogenous materials for lead, hexavalent chromium, mercury, PBB, PBDE, DBP, BBP, DEHP, DIBP, and 0.01% for cadmium, or qualify for an exemption to these limits as defined in the Annexes of Directive 2011/65/EU (RoHS2). Finished electrical and electronic equipment products will be CE marked as required by Directive 2011/65/EU. Components may not be CE marked. Additionally, the part numbers that TE has identified as EU ELV compliant have a maximum concentration of 0.1% by weight in homogenous materials for lead, hexavalent chromium, and mercury, and 0.01% for cadmium, or qualify for an exemption to these limits as defined in the Annexes of Directive 2000/53/EC (ELV). Regarding the REACH Regulation, the information TE provides on SVHC in articles for this part number is based on the latest European Chemicals Agency (ECHA) 'Guidance on requirements for substances in articles' posted at this URL: <https://echa.europa.eu/guidance-documents/guidance-on-reach>

Compatible Parts



TE Part # 58074-1
MTA 50/100/156 MANUAL TOOL FRAME



TE Part # 58443-1
MTA 156 CRIMP HEAD PRODUCTION FEED THRU



TE Part # 3-641437-6
06P MTA156 PSTD CONN ASSY RED



TE Part # 640389-6
06P MTA156 HDR ASSY SQ R/A F/L



TE Part # 643067-6
06P MTA156 MOLDED COVER



TE Part # 640551-6
06P MTA156 COVER



TE Part # 644752-6
06P MTA156 HDR ASSY SQ STR F/L



TE Part # 640388-6
06P MTA156 HDR ASSY RN STR F/L



TE Part # 640385-6
06P MTA156 HDR ASSY SQ R/A



TE Part # 640643-6
06P MTA156 COVER F/T



TE Part # 640383-6
06P MTA156 HDR ASSY STR SQ SN



TE Part # 640445-6
06P MTA156 HDR ASSY FL/STR SN



TE Part # 3-641436-6
06P MTA156 PST CONN ASSY LF



TE Part # 3-644615-6
06P MTA156 POL HDR ASSY LF



TE Part # 3-641435-6
06P MTA156 CONN ASSY ORNG



TE Part # 644753-6
06P MTA156 HDR ASSY RN STR F/L



勝特力電材超市-龍山店 886-3-5773766
 勝特力電材超市-光復店 886-3-5729570
 勝特力电子(上海) 86-21-34970699
 勝特力电子(深圳) 86-755-83298787
<http://www.100y.com.tw>



TE Part # 3-641438-6
06P MTA156 PSTD CONN ASSY WHT



TE Part # 2-647123-6
06P MTA156 SHRD HDR ASSY SQ SN



TE Part # 59804-1
MAINTENANCE TOOL



TE Part # 640384-6
06P MTA156 HDR ASSY STR RND SN


Also in the Series | MTA 156



Connector Caps & Covers(89)




Connector Hardware(2)



Insertion & Extraction Tools(1)




PCB Headers & Receptacles(314)




Power Contacts(2)



Rectangular Power Connectors(694)



Standard Rectangular Connectors(336)



Wire-to-Board Connector Contacts(2)

Customers Also Bought



TE Part #2007637-8
SFP+ assy 2x2 Spring Fingers N



TE Part #5749070-7
68 50SR VERT RCPT ASSY



TE Part #1367645-4
DWDM Kit Assy, PCI (4.2)



TE Part #3-640599-3
03P MTA156 CONN ASSY 18AWG ORA



TE Part #3-641435-6
06P MTA156 CONN ASSY ORNG



TE Part #4-640599-0
10P MTA156 CONN ASSY 18AWG ORA



TE Part #A57019-000
WP-127111-10-9



TE Part #203346-E
MJIM IMV 1X1 S 810 * X R THRU * L9A M5B0