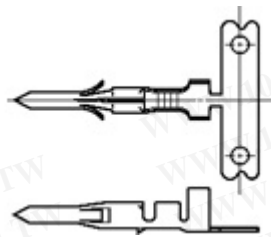


794017-1 Product Details .062" Commercial Pin & Socket Connector



Product Highlights:

- Contact
- Commercial Pin and Socket
- Terminate To Wire
- Crimp Termination Method
- Contact Type = Pin

Product Type Features:

- Product Type = Contact
- Connector Line = Commercial Pin and Socket
- Wire Insulation Diameter (mm [in]) = 1.27 – 2.79 [0.050 – 0.110]
- Comment = Pins or Sockets may be used in either the plug or receptacle housings.

Electrical Characteristics:

- Voltage (VAC) = 250
- Current Rating (A) = 7
- High Current = No

Termination Related Features:

- Termination Method = Crimp

Body Related Features:

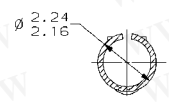
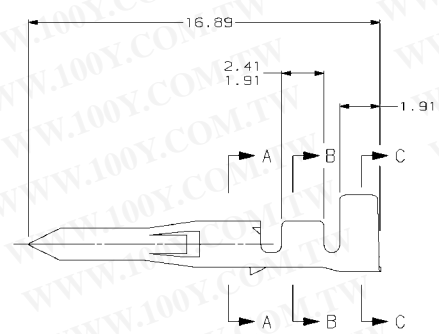
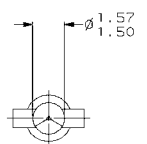
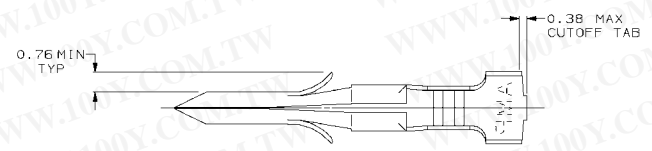
- Contact Diameter (mm [in]) = 1.57 [0.062]
- Wire Range (mm [AWG]) = 0.20-0.80² [24-18]
- Stock Thickness (mm [in]) = 0.20 [0.008]

Contact Related Features:

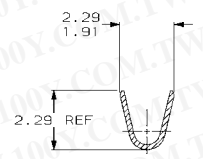
- Contact Type = Pin
- Contact Termination Type = Wire Barrel
- Contact Plating, Mating Area, Material = Pre-Tin
- Contact Base Material = Brass

勝特力材料 886-3-5753170
勝特力电子(上海) 86-21-34970699
勝特力电子(深圳) 86-755-83298787
[Http://www.100y.com.tw](http://www.100y.com.tw)

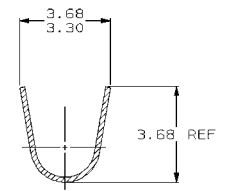
LOC		DIST		REVISONS		DATE	APPRO
CM	53	#	ZONE	LTR	DESCRIPTION		
		0			RELEASED PER PR CM 93-69	7-14-93	LS



SECTION A-A
SCALE 10:1



SECTION B-B
SCALE 10:1



SECTION C-C
SCALE 10:1

MM	IN	MM	IN	MM	IN
1.50	.059	2.41	.095		
1.27	.050	2.29	.090		
0.76	.030	2.24	.088	16.89	.665
0.38	.015	2.16	.085	3.68	.145
0.20	.008	1.91	.075	3.30	.130
0.13	.005	1.57	.062	2.79	.110

CONVERSION TABLE

勝特力材料 886-3-5753170
勝特力电子(上海) 86-21-34970699
勝特力电子(深圳) 86-755-83298787
[Http://www.100y.com.tw](http://www.100y.com.tw)

METRIC

PRE-TIN	0.20 BRASS	1.27 - 2.79	0.2 - 0.9 mm ² (24-18 AWG)	794017-1
FINISH	MATERIAL	INSULATION DIAMETER	WIRE RANGE	PART NO
DO NOT SCALE PRINT, UNLESS SPECIFIED	DR 7-14-93 L. SMITH			
DIMENSIONS IN mm	CHK 7-14-93 R. SWING			
TOLERANCES ON +	APPO 7-15-93			
2 PLC DEC ± 0.13	C. CASH			
3 PLC DEC ± -	APPD 7-15-93			
ANGLES ± -	C. CASH			
MATERIAL	PRODUCT SPEC			
SEE TABLE	-			
FINISH	APPLICATION SPEC			
SEE TABLE	-			
WEIGHT	-			
NAME		SIZE	CAGE CODE	DRAWING NO
AMP AMP Incorporated Harrisburg, PA 17105-3608		Ø	00779	794017
.062 PIN, LOOSE PIECE, COMMERCIAL PIN AND SOCKET		SCALE	8:1	SHEET
				1 OF 1