



产品编号 : [02081001](#)

Product Description : MLX Female Crimp Terminal 42024, 14-20 AWG, Reel, Brass, Tin (Sn) Plating

系列号 : 42024

状态 : Active

Product Category : Crimp Terminals

工程编号 : 42024-1A1

Packaging Alternative : 0002081002 (Bag)



---

## 文件和资源

### 图纸

[图纸 002081001\\_sd.pdf](#)

### 规格

[产品规格 PS-42022-0001-001.pdf](#)

[测试摘要 TS-42022-0001-001.pdf](#)

---

## 产物环境合规

### 合规

GADSL/IMDS	Compliant with Exemption 44
China RoHS	
EU ELV	Compliant per 2000/53/EC
Low-Halogen Status	Low-Halogen per IEC 61249-2-21
REACH SVHC	Not Contained per D(2023)8585-DC (23 Jan 2024)
EU RoHS	Compliant per EU 2015/863

### 多部分产品合规性声明

- Eu RoHS
- REACH SVHC
- Low-Halogen

### 多部分行业合规性文件

- IPC 1752A Class C

- IPC 1752A Class D
- Molex Product Compliance Declaration
- IEC-62474
- chemSHERPA (xml)

欧盟 RoHS 合格证书

## 产品详情

### 常规

状态	活动
类别	Crimp Terminals
系列	42024
说明	MLX Female Crimp Terminal 42024, 14-20 AWG, Reel, Brass, Tin (Sn) Plating
应用	Power, Wire-to-Board, Wire-to-Wire
产品系列	MLX Power Connectors
产品名称	MLX
UPC	800753615878

### 物理

性别	女
材料 - 金属	Brass
材料 - 接合部位电镀	Tin
材料 - 终端电镀	Tin
净重	0.406/g
包装形式	Reel
最薄镀层 - 接合部位	0.508µm
最薄镀层 - 端接	0.508µm
终端界面类型	Crimp or Compression
导线绝缘直径	1.52-3.30mm
线径规格 (AWG)	14, 16, 18, 20
线缆尺寸mm <sup>2</sup>	不适用

### 进程

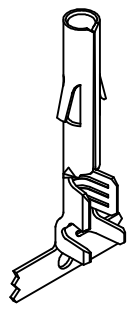
无铅	不适用
----	-----

---

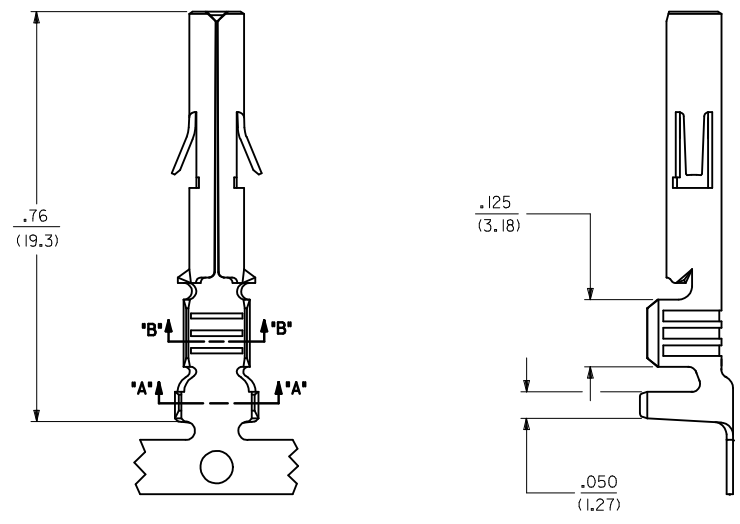
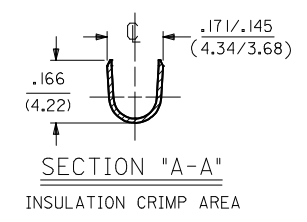
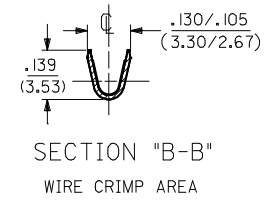
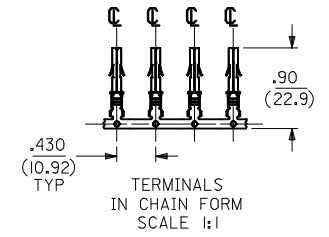
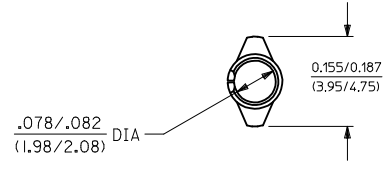
## 施工工具

### 全局

描述	产品编号
Extraction Tool for MLX 2.13mm Diameter Pin and Socket Crimp Terminals	<u>0011010168</u>
PremiumGrade Hand Crimp Tool for MLX Pin and Socket Terminals, 14-20 AWG	<u>0638116800</u>
FineAdjust Applicator for Crimp Terminals, 14-20 AWG Wire with 2.08-2.50mm Diameter Insulation	<u>0639007500</u>
FineAdjust Applicator for Crimp Terminals, 14-20 AWG Wire with 2.65-3.30mm Diameter Insulation	<u>0639009800</u>
FineAdjust Applicator for Crimp Terminals, 14-20 AWG Wire with 2.41-2.95mm Diameter Insulation	<u>0639009900</u>
T2 Terminator for MLX Crimp Terminals, 14-20 AWG	<u>0639107500</u>
T2 Terminator Tooling Die for Crimp Terminals, 14-20 AWG Wire	<u>0639109800</u>
T2 Terminator Tooling Die for Crimp Terminals, 14-20 AWG Wire	<u>0639109900</u>



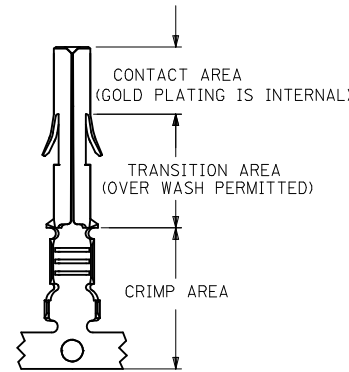
**SOCKET TERMINAL**  
42024-\*\*\*



SEE SHEET 2 FOR CHART, MATERIAL, PLATING, NOTES, AND CRIMP OPTIONS

DRAWING UPDATED EC NO: I2014-0115 CHIKD: 2014/01/09 APPR: KPRASAD 2014/01/13	QUALITY SYMBOLS ▽=0 ▽=0 ▽=0	GENERAL TOLERANCES (UNLESS SPECIFIED)		DIMENSION STYLE IN/MM		SCALE ---	DESIGN UNITS INCH	THIRD ANGLE PROJECTION	
		4 PLACES	± ---	± ---	DRAWN BY SUDHIR	DATE 2004/09/27	TITLE TERMINAL, SOCKET 84/(2.13) DIA. SERIES		
		3 PLACES	± ---	± .010	CHECKED BY KPRASAD	DATE 2004/09/27			
		2 PLACES	± 0.25	± .015	APPROVED BY KPRASAD		DATE 2004/09/27		DOCUMENT NO. SD-42024-****
1 PLACE	± 0.38	± ---	MATERIAL NO.		SHEET NO. 1 OF 2				
0 PLACE	±	±	ANGULAR ±1/2°		SEE CHART		THIS DRAWING CONTAINS INFORMATION THAT IS PROPRIETARY TO MOLEX INCORPORATED AND SHOULD NOT BE USED WITHOUT WRITTEN PERMISSION		
DRAFT WHERE APPLICABLE MUST REMAIN WITHIN DIMENSIONS				SIZE A2					

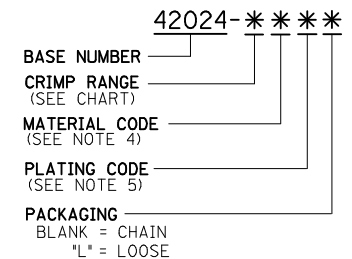
ENG. NO.	EDP NO.	FINISH (REF)	CONTACT AREA (REF)	CRIMP AREA (REF)	MATERIAL (REF)	WIRE SIZE	INSULATION DIA.	STATUS
42024-IA1	002-08-1001	SDES-88-P901	----	----	C26000	#14-#20 AWG	.060-.130	ACTIVE
42024-IAL	002-08-1002	SDES-88-P901	----	----	C26000	#14-#20 AWG	.060-.130	ACTIVE
42024-IB1	002-08-1003	SDES-88-P901	----	----	C51000	#14-#20 AWG	.060-.130	ACTIVE
42024-IBL	002-08-1004	SDES-88-P901	----	----	C51000	#14-#20 AWG	.060-.130	ACTIVE
42024-IA2	002-08-1005	SEE NOTE 5	.000030 MIN GOLD	.000100 MIN MATTE TIN	C26000	#14-#20 AWG	.060-.130	NOT TOOLED
42024-IA2L	002-08-1006	SEE NOTE 5	.000030 MIN GOLD	.000100 MIN MATTE TIN	C26000	#14-#20 AWG	.060-.130	NOT TOOLED
42024-IB2	002-08-1007	SEE NOTE 5	.000030 MIN GOLD	.000100 MIN MATTE TIN	C51000	#14-#20 AWG	.060-.130	NOT TOOLED
42024-IB2L	002-08-1008	SEE NOTE 5	.000030 MIN GOLD	.000100 MIN MATTE TIN	C51000	#14-#20 AWG	.060-.130	NOT TOOLED



### PLATING REGIONS

APPLIES TO GOLD PLATED  
TERMINALS ONLY

### LEGEND:



#### NOTES:

- SOCKET TERMINALS FOR USE WITH THE .084/(2.13) SERIES HOUSINGS:  
PLUG (42021-\*\*) CAP (42022-\*\*)
- SOCKET TERMINALS MATE WITH PIN TERMINALS: .084/(2.13) DIA. SERIES (42023-\*\*\*\*).
- TERMINALS FINISHED IN CHAIN UNLESS SPECIFIED LOOSE. "L" SUFFIX INDICATES LOOSE FORM. (SEE TABLE)
- MATERIAL: .012/(0.30) THICK STRIP:  
A = BRASS, #C26000, PER SMES-124-C7.  
B = PHOSPHOR BRONZE, #C51000, PER SMES-124-E7.
- FINISH:  
1 = HOT TIN DIP 20 m.l./(.051 MICRONS) MINIMUM (PER SDES-88-P901).  
2 = 30 (M.I) / 0.75 MICRONS) MIN SELECT GOLD AND 100 (M.I) (2.50 MICRON) MIN SELECT TIN (MATTE) OVER 50 (M.I) (1.25 MICRONS) MIN NICKEL OVERALL
- CRIMP RANGE: SEE CHART.
- PRODUCT SPECIFICATION PS-42022-0001 APPLIES.

DRAWING UPDATED EC NO: 12014-0115 DRWN:SS06 CHKD: APPR:KPRASAD REV: G	QUALITY SYMBOLS ▽=0 ▽=0 ▽=0	GENERAL TOLERANCES (UNLESS SPECIFIED)		DIMENSION STYLE IN/MM	SCALE ---	DESIGN UNITS INCH	THIRD ANGLE PROJECTION	
		4 PLACES ±---	±---	DRAWN BY SUDHIR	DATE 2004/09/27	TITLE TERMINAL, SOCKET 84/(2.13) DIA. SERIES		
		3 PLACES ±---	±---	CHECKED BY KPRASAD	DATE 2004/09/27	molex		
		2 PLACES ±---	±---	APPROVED BY KPRASAD	DATE 2004/09/27	DOCUMENT NO. SD-42024-****		
		1 PLACE ±---	±---	MATERIAL NO. SEE CHART		SHEET NO. 2 OF 2		
		0 PLACE ±	±	THIS DRAWING CONTAINS INFORMATION THAT IS PROPRIETARY TO MOLEX INCORPORATED AND SHOULD NOT BE USED WITHOUT WRITTEN PERMISSION				