



产品编号 : [02091102](#)

Product Description : 2.36mm Diameter, Standard .093" Pin and Socket Double Crimp Terminal, Series 1189, Female, with Tin (Sn) Plated Brass Contact, 14-20 AWG, Reel

系列号 : 1189

状态 : Active

Product Category : Crimp Terminals

工程编号 : 1189-A(P901)

Packaging Alternative : 0002091104 (Bag)



---

## 文件和资源

### 图纸

[图纸 002091102\\_sd.pdf](#)

### 规格

[产品规格 PS-02-09-001.pdf](#)

[测试摘要 11890000-TS-000.pdf](#)

---

## 产物环境合规

### 合规

GADSL/IMDS	Not Relevant
China RoHS	
EU ELV	Not Relevant
Low-Halogen Status	Low-Halogen per IEC 61249-2-21
REACH SVHC	Not Contained per D(2023)8585-DC (23 Jan 2024)
EU RoHS	Compliant per EU 2015/863

### 多部分产品合规性声明

- Eu RoHS
- REACH SVHC
- Low-Halogen

### 多部分行业合规性文件

- IPC 1752A Class C

- IPC 1752A Class D
- Molex Product Compliance Declaration
- IEC-62474
- chemSHERPA (xml)

欧盟 RoHS 合格证书

## 产品详情

### 常规

状态	活动
类别	Crimp Terminals
系列	1189
说明	2.36mm Diameter, Standard .093" Pin and Socket Double Crimp Terminal, Series 1189, Female, with Tin (Sn) Plated Brass Contact, 14-20 AWG, Reel
应用	Power, Wire-to-Wire
产品系列	Standard .093" Pin and Socket Connectors
产品名称	Standard .093"
UPC	191128081610

### 物理

性别	女
材料 - 金属	Brass
材料 - 接合部位电镀	Tin
材料 - 终端电镀	Tin
净重	398.000/mg
包装形式	Reel
最薄镀层 - 接合部位	0.508µm
最薄镀层 - 端接	0.508µm
终端界面类型	Crimp or Compression
导线绝缘直径	1.65-4.06mm
线径规格 (AWG)	14, 16, 18, 20
线缆尺寸mm <sup>2</sup>	不适用

### 进程

无铅	不适用
----	-----

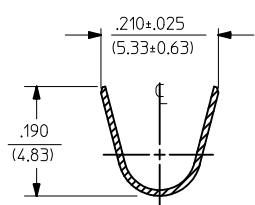
---

## 施工工具

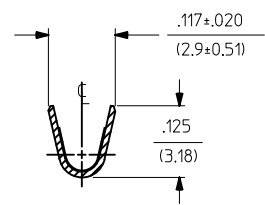
### 全局

描述	产品编号
Insertion Tool for Standard .093" Pin and Socket Terminals	<u>0011020003</u>
Extraction Tool for Standard .093" Pin and Socket Terminals	<u>0011030006</u>
Terminator Die	<u>0011402001</u>
Extractor Tool for .093 and HCS- 125 Product Series	<u>0638240200</u>
Mini-Mac Applicator for Standard .093" Pin and Socket Terminals, for 14-20 AWG Wire with Insulation Diameter 1.65-4.06mm	<u>0638927100</u>
Mini-Mac Applicator for Standard .093" Pin and Socket Terminals, for 14-20 AWG Wire with Insulation Diameter 1.65-4.06mm	<u>0638927300</u>

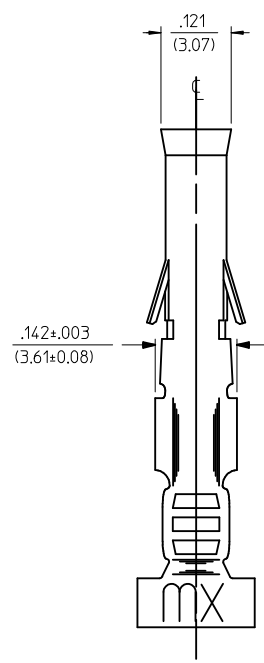
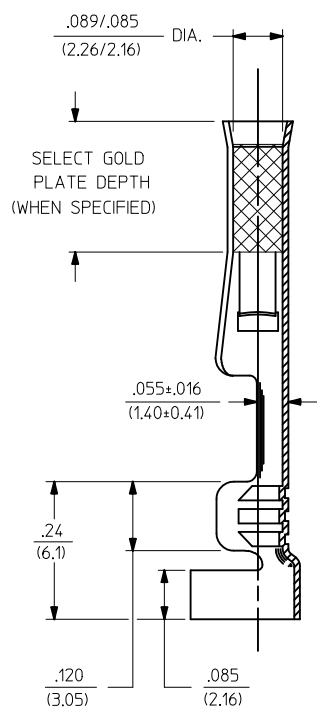
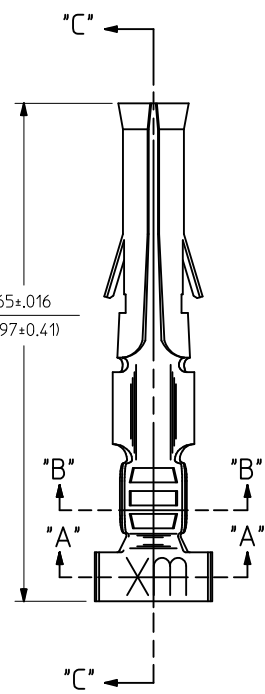
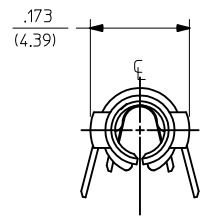
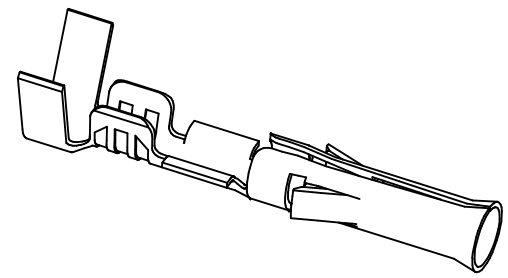
PART NO.	ENG. NO.	INTERLEAF PAPER OPTION
02-09-1104	1189-A(P901)L	
02-09-1102	1189-A(P901)	
02-09-5111	1189-A(P591)L	
02-09-5102	1189-A(P591)	
02-09-5106	1189-A(P550)L	
02-09-5100	1189-A(P550)	
02-09-6102	1189-A(P901)-I	YES



SECT. "A-A"

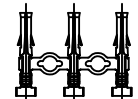


SECT. "B-B"



SECT. "C-C"

CHAIN FORM  
FULL SCALE



LEGEND

1189-A(\*\*\*\*)\*-\*  
 INTERLEAF PAPER OPTION  
 FORM: BLANK=CHAIN, L=LOOSE  
 FINISH CODE: P=PREPLATE, BLANK=POSTPLATE  
 BLANK: INTERLEAF PAPER ON FIRST FEW WRAPS ONLY.  
 I: INTERLEAF PAPER THROUGH OUT REEL.

- NOTES:
- MATERIAL: CARTRIDGE BRASS, ALLOY #C26000, .010/(0.25) THICK
  - FINISH CODES:
    - 901 HOT TIN DIP .000020/(0.00051) MIN.
    - 591 SELECT GOLD PLATE .000050/(0.00127) MIN. IN CONTACT AREA, OVER .000050/(0.00127) MIN. NICKEL OVERALL WITH .000010/(0.00025) MAX. GOLD FLASH OVERALL.
    - 550 SELECT GOLD PLATE .000015/(0.00038) MIN. IN CONTACT AREA, OVER .000030/(0.00076) MIN. NICKEL OVERALL WITH .000010/(0.00025) MAX. GOLD FLASH OVERALL.
  - \*THE PRIMARY SHIPPING CARTON WILL BE LABELED, "COMPLIANT TO RoHS DIRECTIVE 2002/95/EC AND ELV ANNEX OF DIRECTIVE 2000/53/EC", AND CARTONS WITHOUT THIS LABEL MAY CONTAIN PRODUCT WITH TIN-LEAD.

- THIS PART CONFORMS TO PROD. SPEC. 02-09.
- PACKAGING INFORMATION: NOT AVAILABLE
- TERMINAL FOR USE WITH .093/(2.36) SERIES HOUSINGS AND WILL ACCEPT 14 THRU 20 AWG WIRE.
- INSERTION FORCE: 3.5 LBS. MAX. WHEN TERMINAL IS INSERTED INTO AN .093 SERIES HOUSING.
- RETENTION: 20 LBS. MIN. FROM HOUSING.

ADD P/N 02-09-6102 EC NO: UCP2012-2714 DRW:NAELHAG CHKD:JBELL APPR:FSMITH	2012/02/20 2012/02/22 2012/04/25	DESCRIPTION REV	QUALITY SYMBOLS ▽=0 ▽=0	GENERAL TOLERANCES (UNLESS SPECIFIED)	DIMENSION STYLE IN/MM	SCALE 6:1	DESIGN UNITS INCH	THIRD ANGLE PROJECTION																								
			<table border="1"> <thead> <tr> <th></th> <th>mm</th> <th>INCH</th> </tr> </thead> <tbody> <tr> <td>4 PLACES ± ---</td> <td>± ---</td> <td>± ---</td> </tr> <tr> <td>3 PLACES ± ---</td> <td>± .010</td> <td>± .010</td> </tr> <tr> <td>2 PLACES ± 0.25</td> <td>± .014</td> <td>± .014</td> </tr> <tr> <td>1 PLACE ± 0.35</td> <td>± ---</td> <td>± ---</td> </tr> </tbody> </table>		mm	INCH	4 PLACES ± ---	± ---	± ---	3 PLACES ± ---	± .010	± .010	2 PLACES ± 0.25	± .014	± .014	1 PLACE ± 0.35	± ---	± ---	<table border="1"> <thead> <tr> <th>DRAWN BY</th> <th>DATE</th> </tr> </thead> <tbody> <tr> <td>GEP</td> <td>1987/10/26</td> </tr> <tr> <th>CHECKED BY</th> <th>DATE</th> </tr> <tr> <td>RW</td> <td>1987/10/26</td> </tr> <tr> <th>APPROVED BY</th> <th>DATE</th> </tr> <tr> <td>RAS</td> <td>1987/10/26</td> </tr> </tbody> </table>	DRAWN BY	DATE	GEP	1987/10/26	CHECKED BY	DATE	RW	1987/10/26	APPROVED BY	DATE	RAS	1987/10/26	TITLE CRIMP TERMINAL, FEMALE, .093/(2.36) DIA. 14-20 AWG
	mm	INCH																														
4 PLACES ± ---	± ---	± ---																														
3 PLACES ± ---	± .010	± .010																														
2 PLACES ± 0.25	± .014	± .014																														
1 PLACE ± 0.35	± ---	± ---																														
DRAWN BY	DATE																															
GEP	1987/10/26																															
CHECKED BY	DATE																															
RW	1987/10/26																															
APPROVED BY	DATE																															
RAS	1987/10/26																															

DRAFT WHERE APPLICABLE MUST REMAIN WITHIN DIMENSIONS

THIS DRAWING CONTAINS INFORMATION THAT IS PROPRIETARY TO MOLEX INCORPORATED AND SHOULD NOT BE USED WITHOUT WRITTEN PERMISSION