



产品编号 : 02092101

系列号 : 1190

Product Category : Crimp Terminals

Packaging Alternative : 02092103 (Bag)

Product Description : 2.36mm Diameter, Standard .093" Pin and Socket Double Crimp Terminal, Series 1190, Male, with Tin (Sn) Plated Brass Contact, 14-20 AWG, Reel

状态 : Active

工程编号 : 1190-(P901)

文件和资源

图纸

图纸 002092101_sd.pdf

规格

包装规格 PK-1190-001-001.pdf


产品规格 PS-02-09-001.pdf

产品规格 PS-43660-9999-001.pdf

测试摘要 11890000-TS-000.pdf

产物环境合规

合规

GADSL/IMDS	Compliant with Exemption 44
China RoHS	
EU ELV	Not Relevant
Low-Halogen Status	Low-Halogen per IEC 61249-2-21
REACH SVHC	Not Contained per D(2023)8585-DC (23 Jan 2024)
EU RoHS	Compliant per EU 2015/863

多部分产品合规性声明

- Eu RoHS
- REACH SVHC
- Low-Halogen

- IPC 1752A Class C
- IPC 1752A Class D
- Molex Product Compliance Declaration
- IEC-62474

产品详情

常规

状态	活动
类别	Crimp Terminals
系列	1190
说明	2.36mm Diameter, Standard .093" Pin and Socket Double Crimp Terminal, Series 1190, Male, with Tin (Sn) Plated Brass Contact, 14-20 AWG, Reel
应用	Power, Wire-to-Wire
产品系列	Standard .093" Pin and Socket Connectors
产品名称	Standard .093"
UPC	191128081627

物理

耐用性(插拔次数) - 最多次数	25
性别	男
材料 - 金属	Brass
材料 - 接合部位电镀	Tin
材料 - 终端电镀	Tin
净重	0.312/g
包装形式	Reel
最薄镀层 - 接合部位	0.508µm
最薄镀层 - 端接	0.508µm
终端界面类型	Crimp or Compression
导线绝缘直径	1.65-4.06mm
线径规格 (AWG)	14, 16, 18, 20
线缆尺寸mm ²	不适用

进程

无铅	不适用
----	-----

可连接使用部件

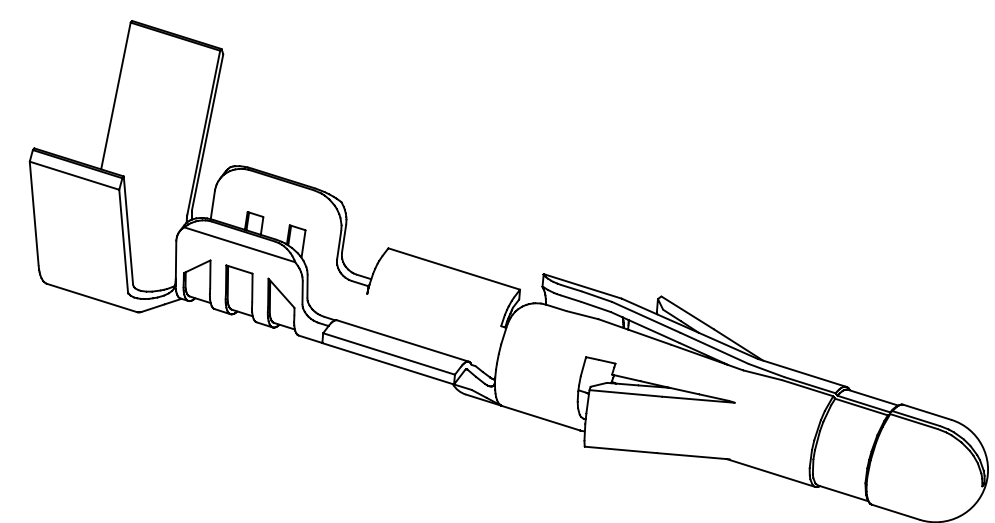
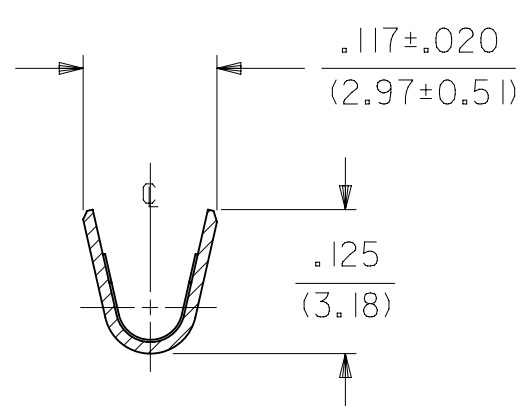
描述	产品编号
Standard .093" Pin and Socket Dual Row Connector Housings	<u>1261</u>
Standard .093" Pin and Socket 3 Row Connector Housings	<u>1292</u>
Standard .093" Pin and Socket Single Row Connector Housings	<u>1396</u>
Standard .093" Pin and Socket Single Row Connector Housings	<u>1490</u>
Standard .093" Pin and Socket Single Row Connector Housings	<u>1545</u>
Standard .093" Pin and Socket Single Row Connector Housings	<u>1619</u>

施工工具

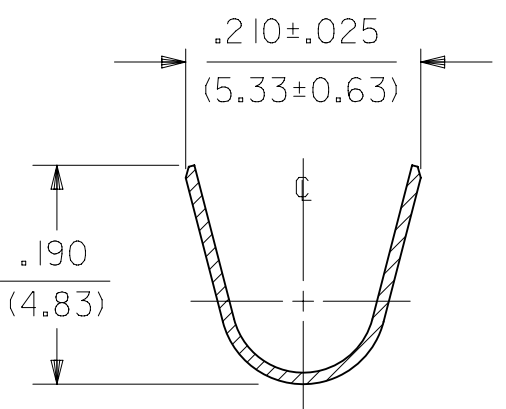
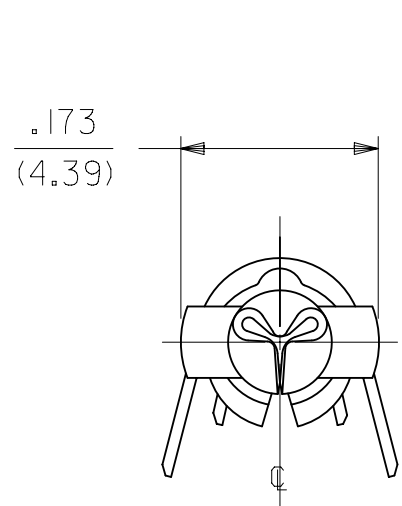
全局

描述	产品编号
Insertion Tool for Standard .093" Pin and Socket Terminals	<u>11020003</u>
Extraction Tool for Standard .093" Pin and Socket Terminals	<u>11030006</u>
Terminator Die	<u>11402001</u>
ServiceGrade Hand Crimp Tool for Field Repair Only, 14-24 AWG	<u>638111000</u>
Extractor Tool for .093 and HCS-125 Product Series	<u>638240200</u>
Mini-Mac Applicator for Standard .093" Pin and Socket Terminals, for 14-20 AWG Wire with Insulation Diameter 1.65-4.06mm	<u>638927100</u>
Mini-Mac Applicator for Standard .093" Pin and Socket Terminals, for 14-20 AWG Wire with Insulation Diameter 1.65-4.06mm	<u>638927300</u>

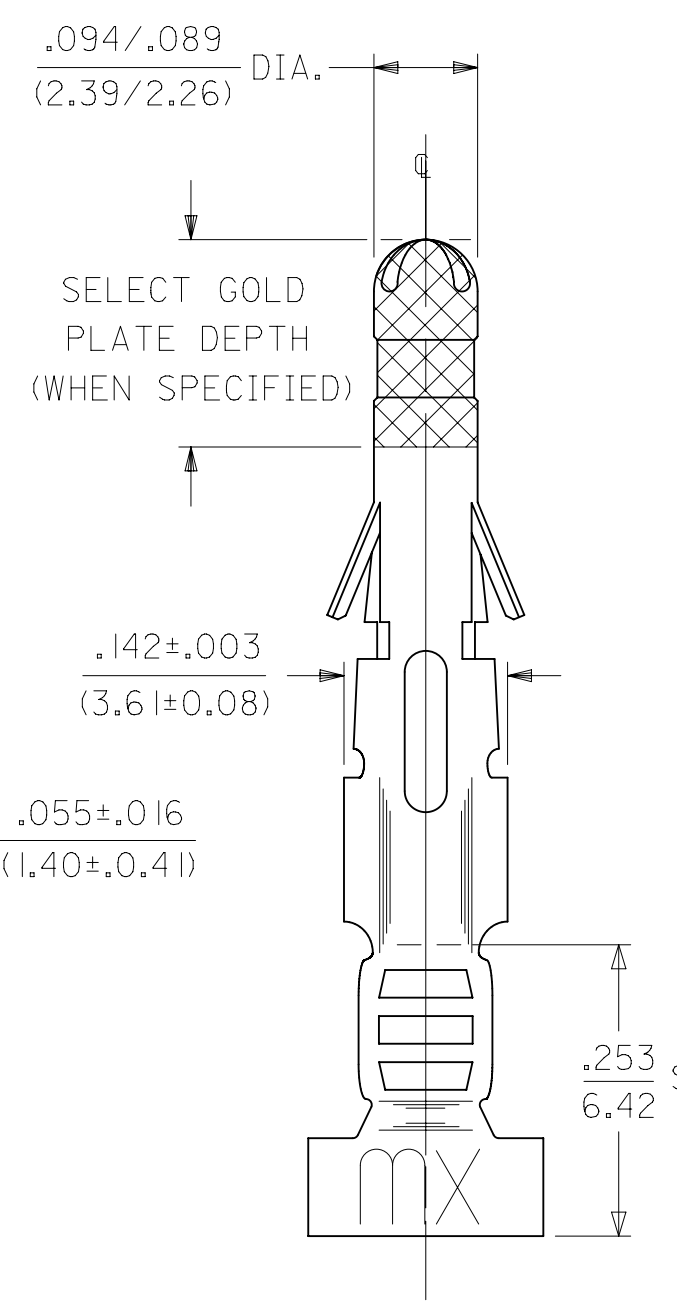
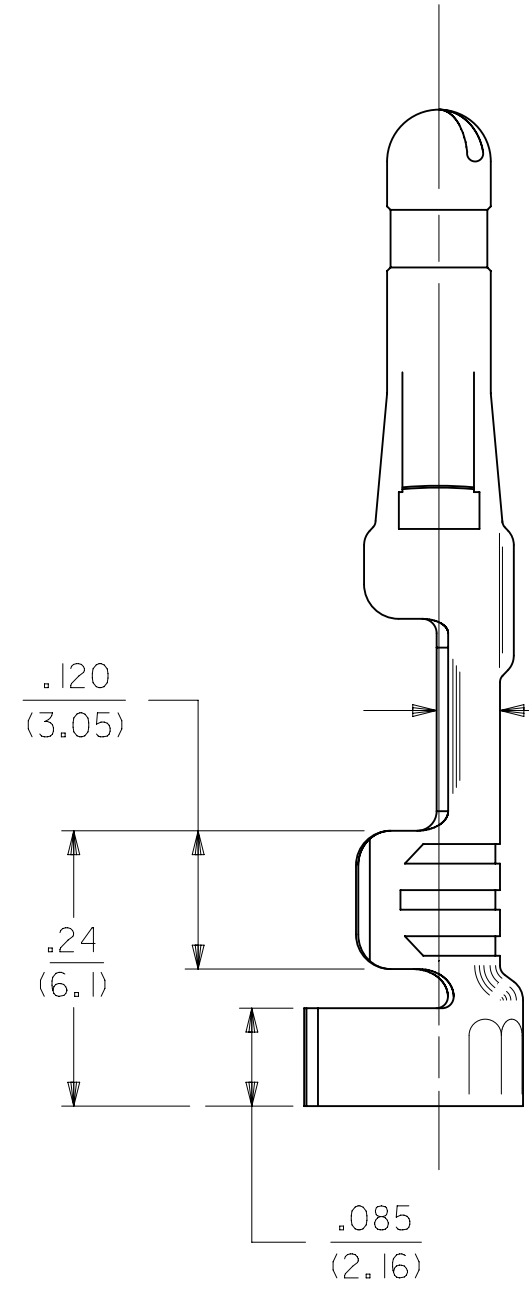
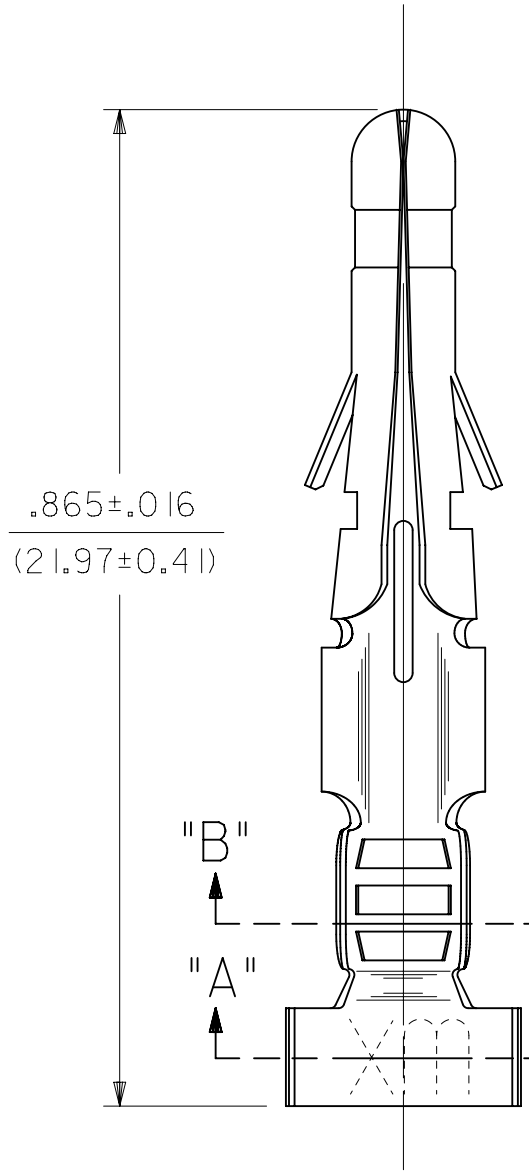
PART NO.	ENG. NO.	INTERLEAF PAPER OPTION
02-09-2103	1190-(P901)L	
02-09-2101	1190-(P901)	
02-09-6106	1190-(550)L	
02-09-6100	1190-(550)	



SECT. "B-B"



SECT. "A-A"

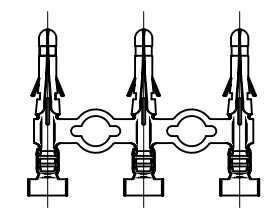
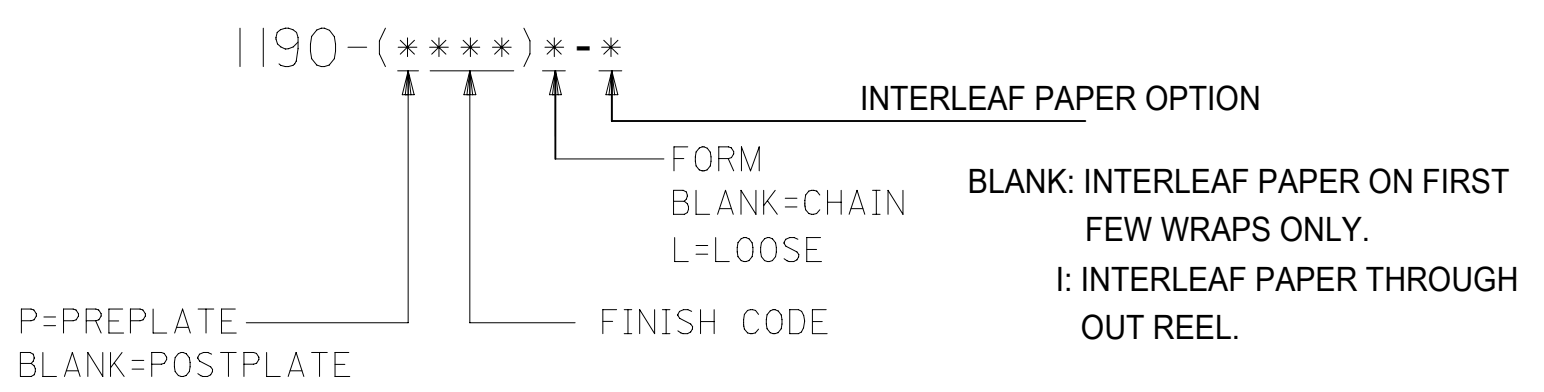


SELECT GOLD PLATE DEPTH (WHEN SPECIFIED)

SEE NOTE 7

- NOTES:
- MATERIAL:
CARTRIDGE BRASS
 - FINISH CODES:
901 HOT TIN DIP .000020/(0.00051) MIN.
591 SELECT GOLD PLATE .000050/(0.00127) MIN. IN CONTACT AREA, OVER .000050/(0.00127) MIN. NICKEL OVERALL WITH .000010/(0.00025) MAX. GOLD FLASH OVERALL.
550 SELECT GOLD PLATE .000015/(0.00038) MIN. IN CONTACT AREA, OVER .000030/(0.00076) MIN. NICKEL OVERALL WITH .000010/(0.00025) MAX. GOLD FLASH OVERALL.
 - PRODUCT SPECIFICATION: PS-43660-9999
 - PACKAGING SPECIFICATION: PK-1190-001
 - INSERTION FORCE: 5.0 LBS. MAX. WHEN TERMINAL IS INSERTED INTO .093 SERIES HOUSING.
 - RETENTION: 20 LBS. MIN. FROM HOUSING.
 - DIMENSION FROM THE END OF THE TERMINAL TO THE END OF THE BRUSH ON THE WIRE CRIMPED INTO THE TERMINAL.
 - TERMINAL FOR USE WITH .093/(2.36) SERIES HOUSINGS AND WILL ACCEPT 14 THRU 20 AWG WIRE.

LEGEND



CHAIN FORM FULL SCALE

THIS DRAWING CONTAINS INFORMATION THAT IS PROPRIETARY TO MOLEX ELECTRONIC TECHNOLOGIES, LLC AND SHOULD NOT BE USED WITHOUT WRITTEN PERMISSION									
DIMENSION UNITS		SCALE		CURRENT REV DESC: OBSOLETE PART NUMBER					
IN/MM		6:1		molex CRIMP TERMINAL, MALE .093/(2.36) DIA. FOR 14 THRU 20 AWG. WIRE PRODUCT CUSTOMER DRAWING DOCUMENT NUMBER: SD-1190-X DOC TYPE: PSD DOC PART: 001 REVISION: BT MATERIAL NUMBER: SEE TABLE CUSTOMER: GENERAL MARKET SHEET NUMBER: 1 OF 1					
GENERAL TOLERANCES (UNLESS SPECIFIED)									
	MM	INCH							
4 PLACES	±	±							
3 PLACES	±	±	0.01						
2 PLACES	±	0.25	±						
1 PLACE	±	0.36	±						
0 PLACES	±	±							
ANGULAR TOL ± 0.5 °				EC NO: 637127		2020/05/06			
DRAFT WHERE APPLICABLE MUST REMAIN WITHIN DIMENSIONS				DRWN: AKUMAR19		2020/05/15			
THIRD ANGLE PROJECTION				CHK'D: GGA		2020/05/15			
DRAWING				APPR: GGA		2020/05/15			
C-SIZE				INITIAL REVISION:					
SERIES				DRWN: AELHAG		2010/06/23			
1190				APPR: FSMITH		2010/06/09			

DOCUMENT STATUS	P1	RELEASE DATE	2020/05/15	16:30:05
-----------------	----	--------------	------------	----------