



产品编号 : [02095100](#)

Product Description : 2.36mm Diameter, Standard .093" Pin and Socket Double Crimp Terminal, Series 1189, Female, with Gold (Au) Plated Brass Contact, 14-20 AWG, Reel

系列号 : 1189

状态 : Active

Product Category : Crimp Terminals

工程编号 : 1189-A(P550)

Packaging Alternative : 0002095106 (Bag)



文件和资源

图纸

[图纸 002095100_sd.pdf](#)

规格

[产品规格 PS-02-09-001.pdf](#)

[测试摘要 11890000-TS-000.pdf](#)

产物环境合规

合规

GADSL/IMDS	Not Relevant
China RoHS	
EU ELV	Not Relevant
Low-Halogen Status	Low-Halogen per IEC 61249-2-21
REACH SVHC	Not Contained per D(2023)8585-DC (23 Jan 2024)
EU RoHS	Compliant per EU 2015/863

多部分产品合规性声明

- Eu RoHS
- REACH SVHC
- Low-Halogen

多部分行业合规性文件

- IPC 1752A Class C

- IPC 1752A Class D
- Molex Product Compliance Declaration
- IEC-62474
- chemSHERPA (xml)

欧盟 RoHS 合格证书

产品详情

常规

状态	活动
类别	Crimp Terminals
系列	1189
说明	2.36mm Diameter, Standard .093" Pin and Socket Double Crimp Terminal, Series 1189, Female, with Gold (Au) Plated Brass Contact, 14-20 AWG, Reel
应用	Power, Wire-to-Wire
产品系列	Standard .093" Pin and Socket Connectors
产品名称	Standard .093"
UPC	800754229869

物理

性别	女
材料 - 金属	Brass
材料 - 接合部位电镀	金牌
材料 - 终端电镀	金牌
净重	0.363/g
包装形式	Reel
最薄镀层 - 接合部位	0.381µm
最薄镀层 - 端接	0.254µm
终端界面类型	Crimp or Compression
导线绝缘直径	1.65-4.06mm
线径规格 (AWG)	14, 16, 18, 20
线缆尺寸mm ²	不适用

进程

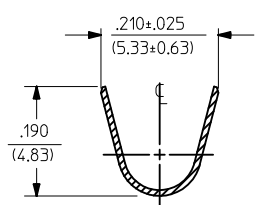
无铅	不适用
----	-----

施工工具

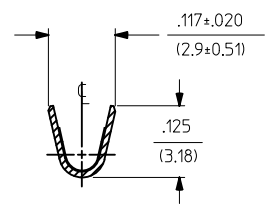
全局

描述	产品编号
Insertion Tool for Standard .093" Pin and Socket Terminals	<u>0011020003</u>
Extraction Tool for Standard .093" Pin and Socket Terminals	<u>0011030006</u>
Terminator Die	<u>0011402001</u>
ServiceGrade Hand Crimp Tool for Field Repair Only, 14-24 AWG	<u>0638111000</u>
Extractor Tool for .093 and HCS-125 Product Series	<u>0638240200</u>
Mini-Mac Applicator for Standard .093" Pin and Socket Terminals, for 14-20 AWG Wire with Insulation Diameter 1.65-4.06mm	<u>0638927100</u>
Mini-Mac Applicator for Standard .093" Pin and Socket Terminals, for 14-20 AWG Wire with Insulation Diameter 1.65-4.06mm	<u>0638927300</u>

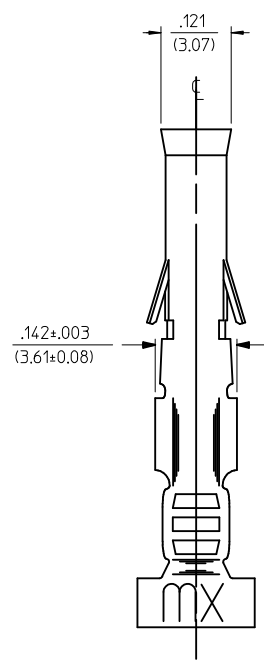
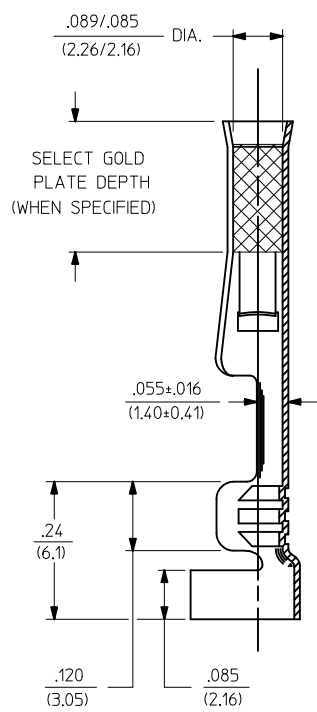
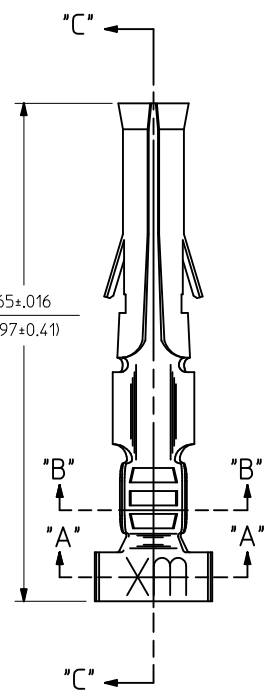
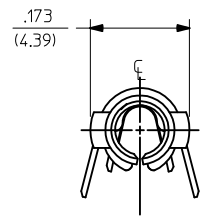
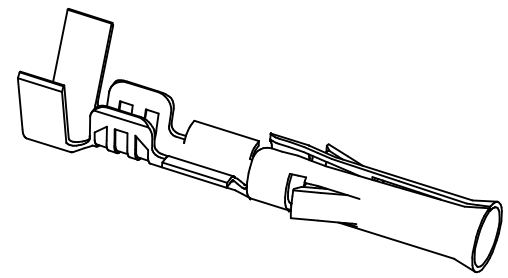
PART NO.	ENG. NO.	INTERLEAF PAPER OPTION
02-09-1104	1189-A(P901)L	
02-09-1102	1189-A(P901)	
02-09-5111	1189-A(P591)L	
02-09-5102	1189-A(P591)	
02-09-5106	1189-A(P550)L	
02-09-5100	1189-A(P550)	
02-09-6102	1189-A(P901)-I	YES



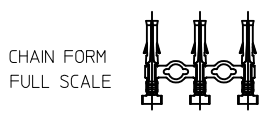
SECT. "A-A"



SECT. "B-B"



SECT. "C-C"



LEGEND

1189-A(****)*-*
 INTERLEAF PAPER OPTION
 FORM: BLANK=CHAIN, L=LOOSE
 FINISH CODE: P=PREPLATE, BLANK=POSTPLATE
 BLANK: INTERLEAF PAPER ON FIRST FEW WRAPS ONLY.
 I: INTERLEAF PAPER THROUGH OUT REEL.

- NOTES:
- MATERIAL: CARTRIDGE BRASS, ALLOY #C26000, .010/(0.25) THICK
 - FINISH CODES:
 - 901 HOT TIN DIP .000020/(0.00051) MIN.
 - 591 SELECT GOLD PLATE .000050/(0.00127) MIN. IN CONTACT AREA, OVER .000050/(0.00127) MIN. NICKEL OVERALL WITH .000010/(0.00025) MAX. GOLD FLASH OVERALL.
 - 550 SELECT GOLD PLATE .000015/(0.00038) MIN. IN CONTACT AREA, OVER .000030/(0.00076) MIN. NICKEL OVERALL WITH .000010/(0.00025) MAX. GOLD FLASH OVERALL.
 - *THE PRIMARY SHIPPING CARTON WILL BE LABELED, "COMPLIANT TO RoHS DIRECTIVE 2002/95/EC AND ELV ANNEX OF DIRECTIVE 2000/53/EC", AND CARTONS WITHOUT THIS LABEL MAY CONTAIN PRODUCT WITH TIN-LEAD.

- THIS PART CONFORMS TO PROD. SPEC. 02-09.
- PACKAGING INFORMATION: NOT AVAILABLE
- TERMINAL FOR USE WITH .093/(2.36) SERIES HOUSINGS AND WILL ACCEPT 14 THRU 20 AWG WIRE.
- INSERTION FORCE: 3.5 LBS. MAX. WHEN TERMINAL IS INSERTED INTO AN .093 SERIES HOUSING.
- RETENTION: 20 LBS. MIN. FROM HOUSING.

ADD P/N 02-09-6102 EC NO: UCP2012-2714 DRW:NAELHAG CHKD:JBELL APPR:FSMITH	2012/02/20 2012/02/22 2012/04/25	DESCRIPTION REV	QUALITY SYMBOLS ▽=0 ▽=0	GENERAL TOLERANCES (UNLESS SPECIFIED)	DIMENSION STYLE IN/MM	SCALE 6:1	DESIGN UNITS INCH	THIRD ANGLE PROJECTION																								
			<table border="1"> <thead> <tr> <th></th> <th>mm</th> <th>INCH</th> </tr> </thead> <tbody> <tr> <td>4 PLACES ± ---</td> <td>± ---</td> <td>± ---</td> </tr> <tr> <td>3 PLACES ± ---</td> <td>± .010</td> <td>± .010</td> </tr> <tr> <td>2 PLACES ± 0.25</td> <td>± .014</td> <td>± .014</td> </tr> <tr> <td>1 PLACE ± 0.35</td> <td>± ---</td> <td>± ---</td> </tr> </tbody> </table>		mm	INCH	4 PLACES ± ---	± ---	± ---	3 PLACES ± ---	± .010	± .010	2 PLACES ± 0.25	± .014	± .014	1 PLACE ± 0.35	± ---	± ---	<table border="1"> <thead> <tr> <th>DRAWN BY</th> <th>DATE</th> </tr> </thead> <tbody> <tr> <td>GEP</td> <td>1987/10/26</td> </tr> <tr> <th>CHECKED BY</th> <th>DATE</th> </tr> <tr> <td>RW</td> <td>1987/10/26</td> </tr> <tr> <th>APPROVED BY</th> <th>DATE</th> </tr> <tr> <td>RAS</td> <td>1987/10/26</td> </tr> </tbody> </table>	DRAWN BY	DATE	GEP	1987/10/26	CHECKED BY	DATE	RW	1987/10/26	APPROVED BY	DATE	RAS	1987/10/26	TITLE CRIMP TERMINAL, FEMALE, .093/(2.36) DIA. 14-20 AWG
	mm	INCH																														
4 PLACES ± ---	± ---	± ---																														
3 PLACES ± ---	± .010	± .010																														
2 PLACES ± 0.25	± .014	± .014																														
1 PLACE ± 0.35	± ---	± ---																														
DRAWN BY	DATE																															
GEP	1987/10/26																															
CHECKED BY	DATE																															
RW	1987/10/26																															
APPROVED BY	DATE																															
RAS	1987/10/26																															

DRAFT WHERE APPLICABLE MUST REMAIN WITHIN DIMENSIONS

THIS DRAWING CONTAINS INFORMATION THAT IS PROPRIETARY TO MOLEX INCORPORATED AND SHOULD NOT BE USED WITHOUT WRITTEN PERMISSION