



产品编号 : 03061011

系列号 : 1625

Product Category : Connector Housings

Product Description : 1.57mm Diameter Standard .062" Pin and Socket Receptacle Housing, 1 Circuits, Natural

状态 : Active

工程编号 : 1625-1R

---

## 文件和资源

### 图纸

图纸 003061011\_sd.pdf

### 3D 模型和设计文件

3D模型 003061011\_stp.zip

### 规格


包装规格 PK-1625-003-001.pdf

产品规格 PS-02-06-001.pdf

---

## 产物环境合规

### 合规

GADSL/IMDS	Not Relevant
China RoHS	
EU ELV	Not Relevant
Low-Halogen Status	Low-Halogen per IEC 61249-2-21
REACH SVHC	Not Contained per D(2023)8585-DC (23 Jan 2024)
EU RoHS	Compliant per EU 2015/863

### 多部分产品合规性声明

- Eu RoHS
- REACH SVHC
- Low-Halogen
  
- IPC 1752A Class C
- IPC 1752A Class D
- Molex Product Compliance Declaration
- IEC-62474
- chemSHERPA (xml)

## 产品详情

### 常规

状态	活动
类别	Connector Housings
系列	1625
说明	1.57mm Diameter Standard .062" Pin and Socket Receptacle Housing, 1 Circuits, Natural
应用	Power, Wire-to-Wire
个评论	Polarized to Mating Part
产品系列	Standard .062"+ and Standard .062" Pin and Socket Connector Systems
产品名称	Standard .062"
UPC	800753615489

### 机构

CSA	LR19980
UL	E29179

### 物理

断开	否
电路数 (最多)	1
颜色-树脂	Natural
阻燃性	94V-2
性别	Receptacle
符合灼热丝规范	否
插接极性	无
锁定插接部位	是
材料 - 树脂	Nylon
净重	0.284/g
行数	1
包装形式	Bag
面板安装式	否

间距 - 插配接口	不适用
间距 - 终端界面	不适用
有极性的插配件	是
可堆叠的	否
运行温度范围	-40° to +105° C

进程

无铅	不适用
----	-----

---

可配插/可连接使用的产品

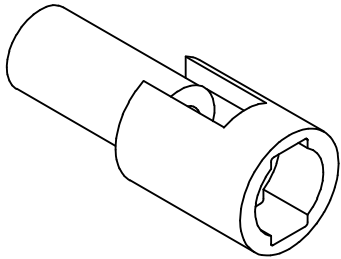
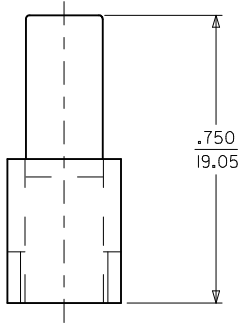
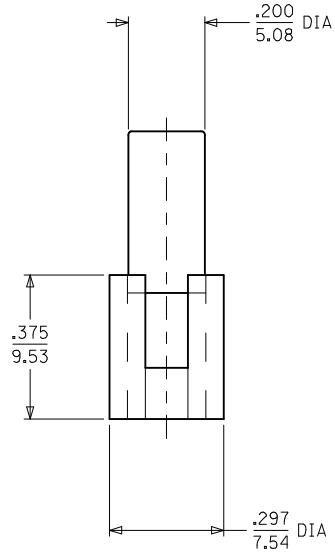
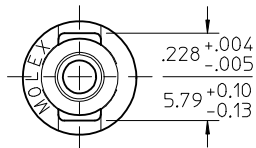
可配插部件

描述	产品编号
1.57mm Diameter Standard .062" Pin and Socket Plug Housing, 1 Circuits, Natural	<u>03062011</u>

可连接使用部件

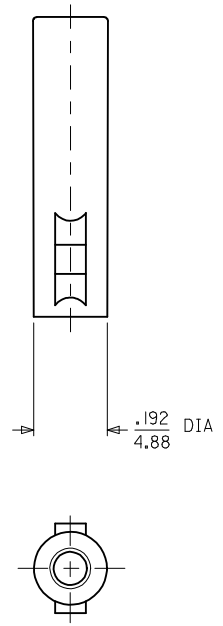
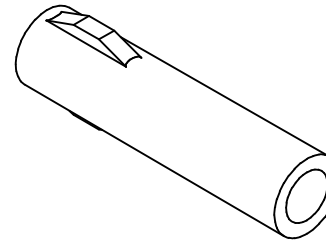
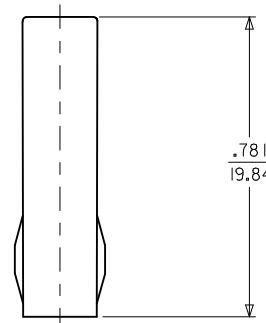
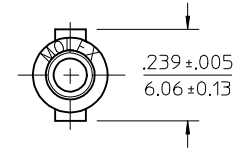
描述	产品编号
Standard .062" Pin and Socket Female Crimp Terminals	<u>1561</u>
Standard .062" Pin and Socket Female Crimp Terminals	<u>1855</u>
Standard .062" Pin and Socket Male Crimp Terminals	<u>1560</u>
Standard .062" Pin and Socket Male Crimp Terminals	<u>1854</u>
Standard .062" Pin and Socket Male PC Tail Terminals	<u>1778</u>
Standard .062" Pin and Socket Female PC Tail Terminals	<u>1779</u>

**PLUG**



**PLUG HOUSING**

**RECEPTACLE**

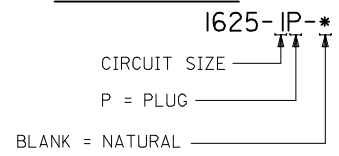


**RECEPTACLE HOUSING**

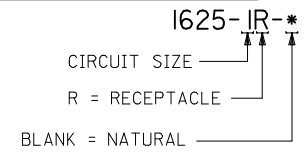
ADD .228 DIMENSION EC NO: UCP2015-4538 DRWING: J2 2015/05/01 2015/05/04 2015/06/04 CHKD: J.BELL APPR: F.SMITH	QUALITY SYMBOLS ▽=0 ▽=0 ▽=0	GENERAL TOLERANCES (UNLESS SPECIFIED) mm INCH 4 PLACES ± --- ± --- 3 PLACES ± --- ± .010 2 PLACES ± 0.25 ± .014 1 PLACE ± 0.35 ± --- 0 PLACE ± --- ± --- ANGULAR ± 1 ° DRAFT WHERE APPLICABLE MUST REMAIN WITHIN DIMENSIONS	DIMENSION STYLE IN/MM DRAWN BY DATE JBS 2003/06/10 CHECKED BY DATE BW 2003/06/16 APPROVED BY DATE F.SMITH 2014/07/09	SCALE 4:1 DESIGN UNITS INCH THIRD ANGLE PROJECTION	TITLE PLUG & RECEPTACLE 1 CIRCUIT	MATERIAL NO. SEE CHART	DOCUMENT NO. SD-1625-1*-*-	SHEET NO. 1 OF 2
	REV J2	DESCRIPTION	THIS DRAWING CONTAINS INFORMATION THAT IS PROPRIETARY TO MOLEX INCORPORATED AND SHOULD NOT BE USED WITHOUT WRITTEN PERMISSION	MOLEX	MOLEX	MOLEX		

PLUG		RECEPTACLE	
PART NO.	ENG. NO.	PART NO.	ENG. NO.
03-06-2011	1625-IP	03-06-1011	1625-IR

**PLUG LEGEND:**



**RECEPTACLE LEGEND:**



**NOTES:**

1. MATERIAL: NYLON, PA66, UL94V-2, COLOR: NATURAL
2. FINISH: NONE
3. PRODUCT SPECIFICATION: PS-02-06
4. PACKAGING SPECIFICATION: PK-1625-003
5. FOR USE WITH .062 SERIES TERMINALS
6. PARTS CONFORM TO CLASS B REQUIREMENTS OF COSMETIC SPECIFICATION PS-45499-002.

SEE SHEET 1 EC NO: UCP2015-4538 DRWN:KIPPER 2015/05/01 CHKD:JBELL 2015/05/04 APPR:FSMITH 2015/06/04	J2 REV	QUALITY SYMBOLS	GENERAL TOLERANCES (UNLESS SPECIFIED)	DIMENSION STYLE IN/MM	SCALE 4:1	DESIGN UNITS INCH	THIRD ANGLE PROJECTION
		▽=0	mm INCH	DRAWN BY DATE JBS 2003/06/10	TITLE PLUG & RECEPTACLE 1 CIRCUIT		
		▽=0	4 PLACES ± --- ± ---	CHECKED BY DATE BW 2003/06/16			
		▽=0	3 PLACES ± --- ±.010	APPROVED BY DATE FSMITH 2014/07/09			
		ANGULAR ± 1°	MATERIAL NO.	DOCUMENT NO.		SHEET NO.	
		DRAFT WHERE APPLICABLE MUST REMAIN WITHIN DIMENSIONS	SEE CHART	SD-1625-1*-*		2 OF 2	
			SIZE	THIS DRAWING CONTAINS INFORMATION THAT IS PROPRIETARY TO MOLEX INCORPORATED AND SHOULD NOT BE USED WITHOUT WRITTEN PERMISSION			