



产品编号 : 03062011

系列号 : 1625

Product Category : Connector Housings

Product Description : 1.57mm Diameter
Standard .062" Pin and Socket Plug
Housing, 1 Circuits, Natural

状态 : Active

工程编号 : 1625-1P

文件和资源

图纸

图纸 003062011_sd.pdf

3D 模型和设计文件

3D模型 003062011_stp.zip


规格

包装规格 PK-1625-003-001.pdf

产品规格 PS-02-06-001.pdf

产物环境合规

合规

GADSL/IMDS	Not Relevant
China RoHS	
EU ELV	Not Relevant
Low-Halogen Status	Low-Halogen per IEC 61249-2-21
REACH SVHC	Not Contained per D(2023)8585-DC (23 Jan 2024)
EU RoHS	Compliant per EU 2015/863

多部分产品合规性声明

- Eu RoHS
- REACH SVHC
- Low-Halogen

- IPC 1752A Class C
- IPC 1752A Class D
- Molex Product Compliance Declaration
- IEC-62474
- chemSHERPA (xml)

产品详情

常规

状态	活动
类别	Connector Housings
系列	1625
说明	1.57mm Diameter Standard .062" Pin and Socket Plug Housing, 1 Circuits, Natural
应用	Power, Wire-to-Wire
个评论	Polarized to Mating Part
产品系列	Standard .062"+ and Standard .062" Pin and Socket Connector Systems
产品名称	Standard .062"
UPC	800753746152

机构

CSA	LR19980
UL	E29179

物理

断开	否
电路详图	1
电路数 (最多)	1
颜色-树脂	Natural
阻燃性	94V-2
性别	Plug
符合灼热丝规范	否
插接极性	无
锁定插接部位	是
材料 - 树脂	Nylon
净重	0.357/g
行数	1
包装形式	Bag

面板安装式	否
间距 - 插配接口	不适用
间距 - 终端界面	不适用
有极性的插配件	是
可堆叠的	否
运行温度范围	-40° to +105° C

进程

无铅	不适用
----	-----

可配插/可连接使用的产品

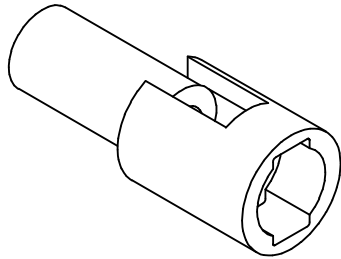
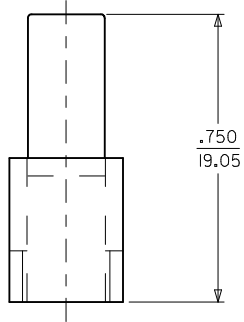
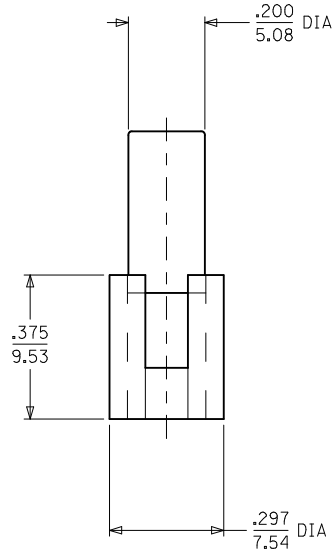
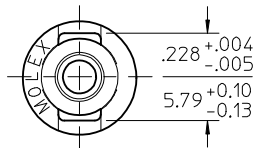
可配插部件

描述	产品编号
1.57mm Diameter Standard .062" Pin and Socket Receptacle Housing, 1 Circuits, Natural	<u>03061011</u>

可连接使用部件

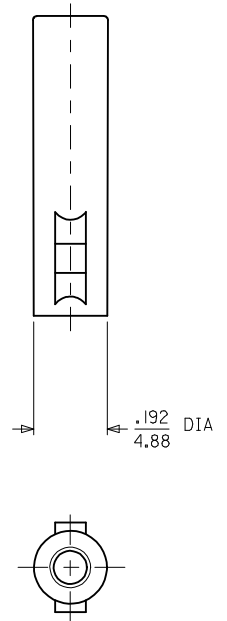
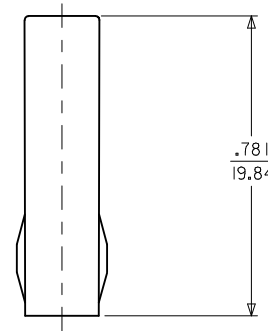
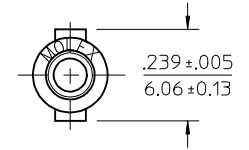
描述	产品编号
Standard .062" Pin and Socket Female Crimp Terminals	<u>1561</u>
Standard .062" Pin and Socket Female Crimp Terminals	<u>1855</u>
Standard .062" Pin and Socket Male Crimp Terminals	<u>1560</u>
Standard .062" Pin and Socket Male Crimp Terminals	<u>1854</u>
Standard .062" Pin and Socket Male PC Tail Terminals	<u>1778</u>
Standard .062" Pin and Socket Female PC Tail Terminals	<u>1779</u>

PLUG



PLUG HOUSING

RECEPTACLE

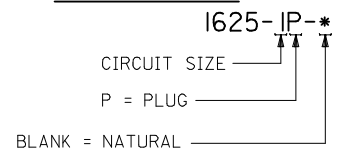


RECEPTACLE HOUSING

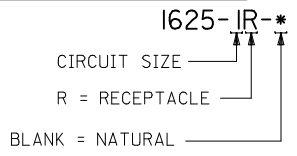
ADD .228 DIMENSION EC NO: UCP2015-4538 DRW:MKIPPER 2015/05/01 CHKD:JBELL 2015/05/04 APPR:FSMITH 2015/06/04	QUALITY SYMBOLS	GENERAL TOLERANCES (UNLESS SPECIFIED)	DIMENSION STYLE	SCALE	DESIGN UNITS	THIRD ANGLE PROJECTION
	▽=0	mm INCH	IN/MM	4:1	INCH	
	▽=0	4 PLACES ± --- ± ---	DRAWN BY DATE	TITLE		
	▽=0	3 PLACES ± --- ± .010	JBS 2003/06/10	PLUG & RECEPTACLE 1 CIRCUIT		
REV	DESCRIPTION	2 PLACES ± 0.25 ± .014	CHECKED BY DATE	molex DOCUMENT NO. SD-1625-1*-*- SHEET NO. 1 OF 2		
J2		1 PLACE ± 0.35 ± ---	BW 2003/06/16			
		0 PLACE ± --- ± ---	APPROVED BY DATE	THIS DRAWING CONTAINS INFORMATION THAT IS PROPRIETARY TO MOLEX INCORPORATED AND SHOULD NOT BE USED WITHOUT WRITTEN PERMISSION		
		ANGULAR ± 1 °	FSMITH 2014/07/09			
		DRAFT WHERE APPLICABLE MUST REMAIN WITHIN DIMENSIONS	MATERIAL NO.			
			SEE CHART			

PLUG		RECEPTACLE	
PART NO.	ENG. NO.	PART NO.	ENG. NO.
03-06-2011	1625-IP	03-06-1011	1625-IR

PLUG LEGEND:



RECEPTACLE LEGEND:



NOTES:

1. MATERIAL: NYLON, PA66, UL94V-2, COLOR: NATURAL
2. FINISH: NONE
3. PRODUCT SPECIFICATION: PS-02-06
4. PACKAGING SPECIFICATION: PK-1625-003
5. FOR USE WITH .062 SERIES TERMINALS
6. PARTS CONFORM TO CLASS B REQUIREMENTS OF COSMETIC SPECIFICATION PS-45499-002.

SEE SHEET 1 EC NO: UCP2015-4538 DRWN:KIPPER 2015/05/01 CHKD:JBELL 2015/05/04 APPR:FSMITH 2015/06/04	DESCRIPTION REV	QUALITY SYMBOLS	GENERAL TOLERANCES (UNLESS SPECIFIED)	DIMENSION STYLE IN/MM	SCALE 4:1	DESIGN UNITS INCH	THIRD ANGLE PROJECTION
		▽=0	mm INCH	DRAWN BY DATE JBS 2003/06/10	TITLE PLUG & RECEPTACLE 1 CIRCUIT		
		▽=0	4 PLACES ± --- ± ---	CHECKED BY DATE BW 2003/06/16			
		▽=0	3 PLACES ± --- ± .010	APPROVED BY DATE FSMITH 2014/07/09	MATERIAL NO. DOCUMENT NO. SHEET NO.		
	2 PLACES ± 0.25 ± .014	DRAFT WHERE APPLICABLE MUST REMAIN WITHIN DIMENSIONS			SIZE SEE CHART SD-1625-1*-* 2 OF 2		
	1 PLACE ± 0.35 ± ---	ANGULAR ± 1 °			THIS DRAWING CONTAINS INFORMATION THAT IS PROPRIETARY TO MOLEX INCORPORATED AND SHOULD NOT BE USED WITHOUT WRITTEN PERMISSION		
	0 PLACE ± --- ± ---						