



产品编号 : 08500133

系列号 : 2578

Product Category : Crimp Terminals

Packaging Alternative : 08500134 (Bag)

Product Description : KK 396 Crimp Terminal 2578, 22-26 AWG, Reel, Phosphor Bronze, 2.540µm Tin (Sn)

状态 : Active

工程编号 : 2578-B-P909

文件和资源

图纸

图纸 008500133_sd.pdf


包装设计图 PK-2759-002-001.pdf

规格

产品规格 PS-08-50-001.pdf

产物环境合规

合规

| | |
|--------------------|---|
| GADSL/IMDS | Compliant with Exemption 44 |
| China RoHS |  |
| EU ELV | Not Relevant |
| Low-Halogen Status | Low-Halogen per IEC 61249-2-21 |
| REACH SVHC | Not Contained per D(2023)8585-DC (23 Jan 2024) |
| EU RoHS | Compliant per EU 2015/863 |

多部分产品合规性声明

- Eu RoHS
- REACH SVHC
- Low-Halogen

- IPC 1752A Class C
- IPC 1752A Class D
- Molex Product Compliance Declaration
- IEC-62474
- chemSHERPA (xml)

欧盟 RoHS 合格证书

产品详情

常规

| | |
|------|--|
| 状态 | 活动 |
| 类别 | Crimp Terminals |
| 系列 | 2578 |
| 说明 | KK 396 Crimp Terminal 2578, 22-26 AWG, Reel, Phosphor Bronze, 2.540µm Tin (Sn) |
| 应用 | Power, Wire-to-Board |
| 产品系列 | KK Interconnect Systems |
| 产品名称 | KK 396, KK 508 |
| UPC | 800754224666 |

物理

| | |
|---------------------|----------------------|
| 性别 | 女 |
| 材料 - 金属 | Phosphor Bronze |
| 材料 - 接合部位电镀 | Tin |
| 材料 - 终端电镀 | Tin |
| 净重 | 0.150/g |
| 包装形式 | Reel |
| 最薄镀层 - 接合部位 | 2.540µm |
| 最薄镀层 - 端接 | 2.540µm |
| 终端界面类型 | Crimp or Compression |
| 导线绝缘直径 | 1.65mm max. |
| 线径规格 (AWG) | 22, 24, 26 |
| 线缆尺寸mm ² | 不适用 |

进程

| | |
|----|-----|
| 无铅 | 不适用 |
|----|-----|

可连接使用部件

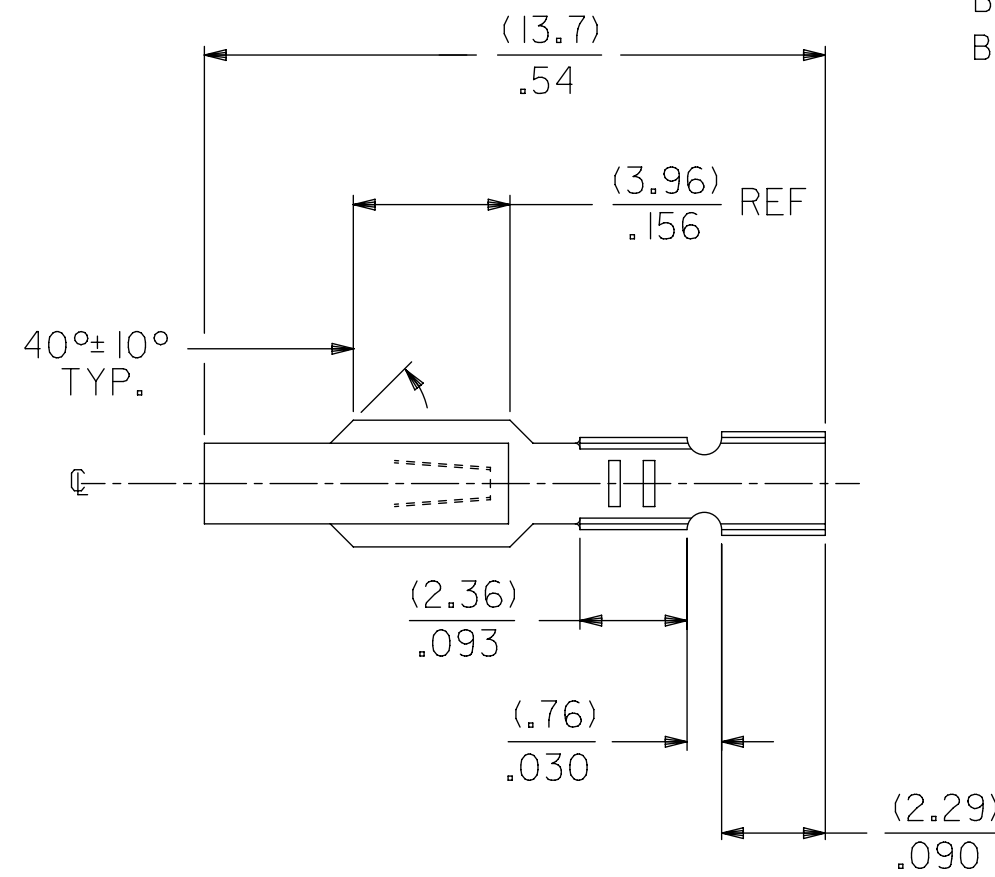
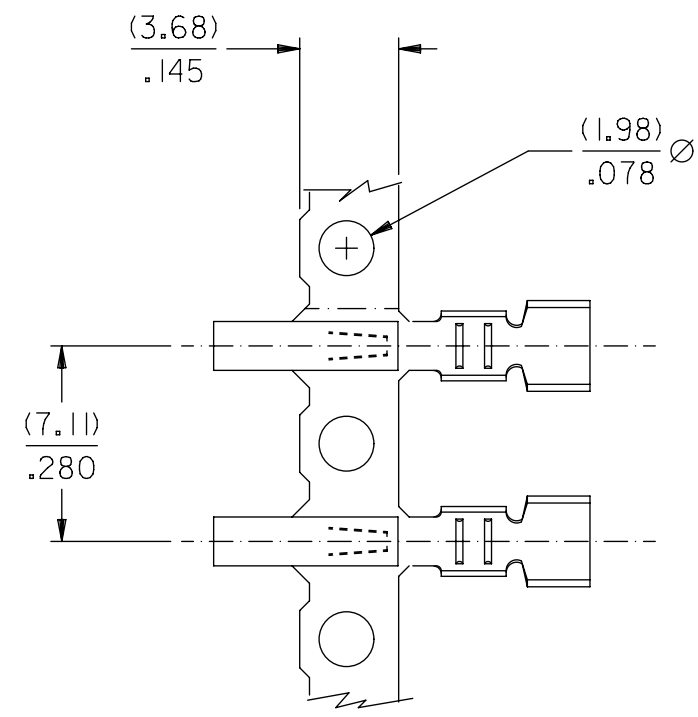
| | |
|-------------------------------------|-------------|
| 描述 | 产品编号 |
| KK 3.96mm Single Row Crimp Housings | <u>2139</u> |

| | |
|-------------------------------------|--------------|
| KK 3.96mm Single Row Crimp Housings | <u>3069</u> |
| KK 3.96mm Crimp Housings | <u>41695</u> |

施工工具

全局

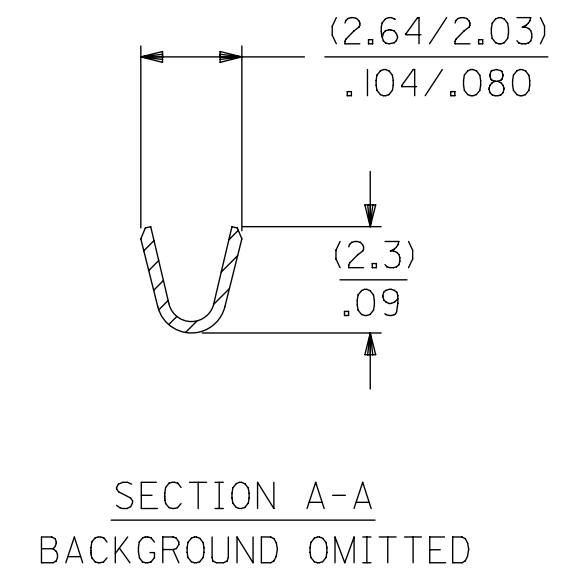
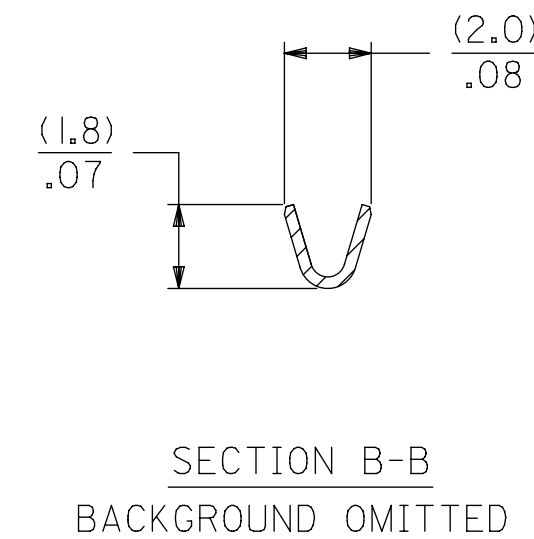
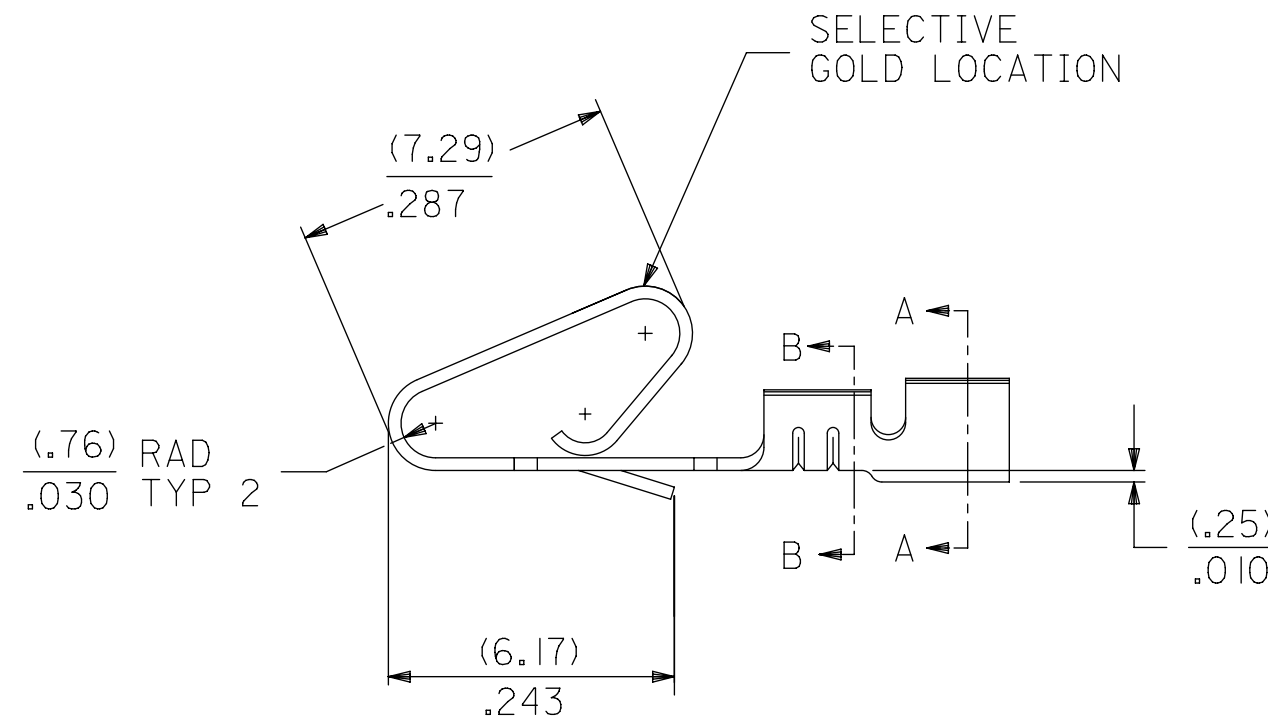
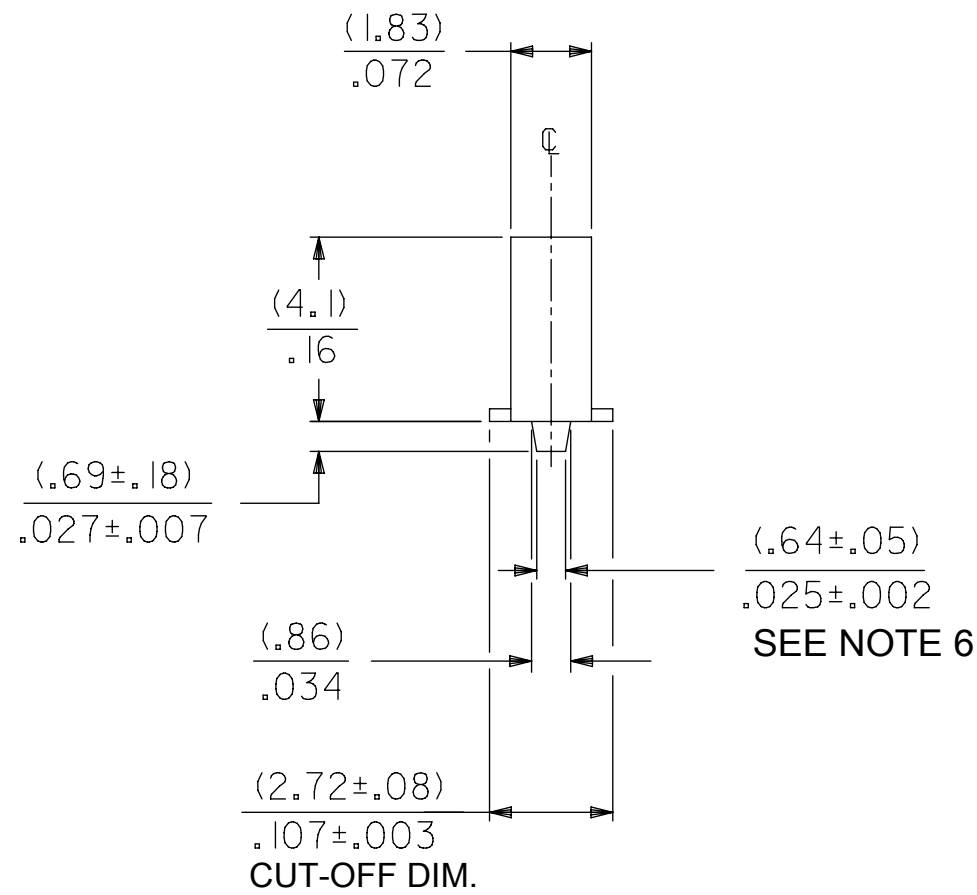
| 描述 | 产品编号 |
|---|------------------|
| Extraction Tool for Flat Blade, 3.96mm KK, 2.00mm, 3.96mm EdgeMate, and Ultra-Fit Terminals | <u>11030016</u> |
| Terminator Die | <u>11402097</u> |
| Terminator Die | <u>11402099</u> |
| PremiumGrade Hand Crimp Tool for KK 3.96mm Terminals, 22-26 AWG | <u>638117400</u> |
| Mini-Mac Applicator | <u>638881000</u> |



2578 - * - * * *
 MATERIAL CODE
 (.28)/.0106 THK
 BLANK=BRASS
 B=PHOS BRONZE
 WINDING SPEC.
 A=CHAIN, PER WINDING DETAIL "A"
 BLANK=CHAIN, PER WINDING DETAIL "B"
 L=LOOSE
 PLATING CODE
 (PER SDES-88)

OPTIONS
 BLANK=AS SHOWN
 1 = WITH CAT EARS

- (122) - OVERALL TIN: (0.00381)/.000150 MIN.
OVER (0.00076)/.000030 MIN. NICKEL
- (154) - OVERALL TIN (0.00254)/.000100 MIN.
OVER (0.00127)/.000050 MIN. NICKEL
- (224) - OVERALL MATTE TIN: (0.00508)/.000200 MIN.
OVER (0.00127)/.000050 MIN. NICKEL
- (550) - SELECT GOLD: (0.00038)/.000015 MIN.
OVERALL GOLD FLASH: (0.00005)/.000002 MIN.
OVERALL NICKEL UNDERPLATE: (0.00076)/.000030 MIN.
- (555) - SELECT GOLD: (0.00038)/.000015 MIN.
OVERALL NICKEL UNDERPLATE: (0.00076)/.000030 MIN.
- (558) - SELECT GOLD: (0.00076)/.000030 MIN.
OVERALL GOLD FLASH: (0.00005)/.000002 MIN.
OVERALL NICKEL UNDERPLATE: (0.00127)/.000050 MIN.
- (P909) - OVERALL HOT TIN DIP: (0.00254)/.000100 MIN



1. MATERIAL: SEE LEGEND
2. FINISH: SEE LEGEND
3. PRODUCT SPECIFICATION: PS-08-50
PACKAGING SPECIFICATION: LOOSE TERMINALS PER PK-2759-001
CHAIN FORM TERMINALS PER PK-2759-002
4. CRIMP ACCEPTS 22 TO 26 GA. WIRE WITH (1.65)/0.65 MAX INSULATION DIA
5. DIMENSIONS GIVEN ACROSS CENTERLINES ARE SYMMETRICAL ABOUT THOSE CENTERLINES WITHIN HALF THE TOTAL TOLERANCE
6. OPTIONAL DESIGN (.86±.05)/.034±.002
7. THIS PART CONFORMS TO CLASS B REQUIREMENTS OF COSMETIC SPECIFICATION PS-45499-002

| THIS DRAWING CONTAINS INFORMATION THAT IS PROPRIETARY TO MOLEX ELECTRONIC TECHNOLOGIES, LLC AND SHOULD NOT BE USED WITHOUT WRITTEN PERMISSION | | | | | | | | | | | | | |
|---|-------|--|------|---------|------|--|--|-----------------|--|----------|--|--------------|--|
| SYMBOLS | | DIMENSION UNITS | | SCALE | | CURRENT REV DESC: NOTE 3 UPDATED | | | | | | | |
| ▽ = 0 | ▽ = 0 | MM/IN | 1:1 | | | EC NO: 605479 DRWN: SS06 2018/09/11 CHK'D: ISHWARG 2018/10/05 APPR: ISHWARG 2018/10/05 INITIAL REVISION: DRWN: PEREZ/AR 1987/01/29 APPR: FSMITH 2014/04/21 | | | | | | | |
| ▽ = 0 | ▽ = 0 | GENERAL TOLERANCES (UNLESS SPECIFIED) | | | | | | | | | | | |
| ▽ = 0 | ▽ = 0 | MM | INCH | | | | | | | | | | |
| ▽ = 0 | ▽ = 0 | 4 PLACES | ± | ± | | | | | | | | | |
| ▽ = 0 | ▽ = 0 | 3 PLACES | ± | ± | 0.01 | | | | | | | | |
| ▽ = 0 | ▽ = 0 | 2 PLACES | ± | 0.25 | ± | 0.014 | | | | | | | |
| ▽ = 0 | ▽ = 0 | 1 PLACE | ± | 0.36 | ± | | | | | | | | |
| ▽ = 0 | ▽ = 0 | 0 PLACES | ± | ± | | | | | | | | | |
| ▽ = 0 | ▽ = 0 | ANGULAR TOL | | ± 0.5° | | | | | | | | | |
| ▽ = 0 | ▽ = 0 | DRAFT WHERE APPLICABLE MUST REMAIN WITHIN DIMENSIONS | | | | | | | | | | | |
| | | THIRD ANGLE PROJECTION | | DRAWING | | SERIES | | MATERIAL NUMBER | | CUSTOMER | | SHEET NUMBER | |
| | | C-SIZE | | 2578 | | SEE CHART | | GENERAL MARKET | | 1 OF 2 | | | |

molex

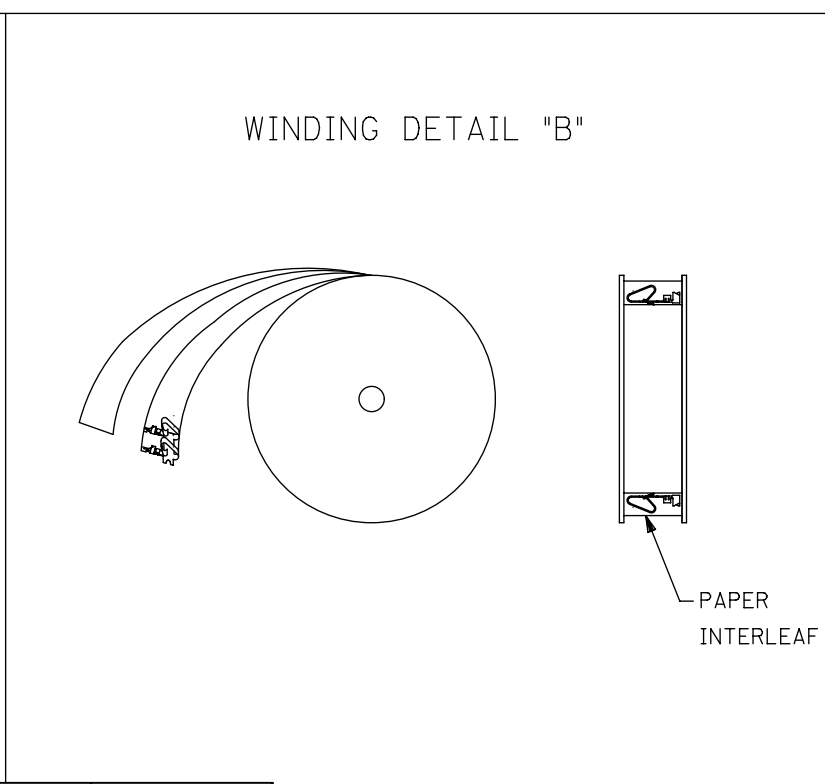
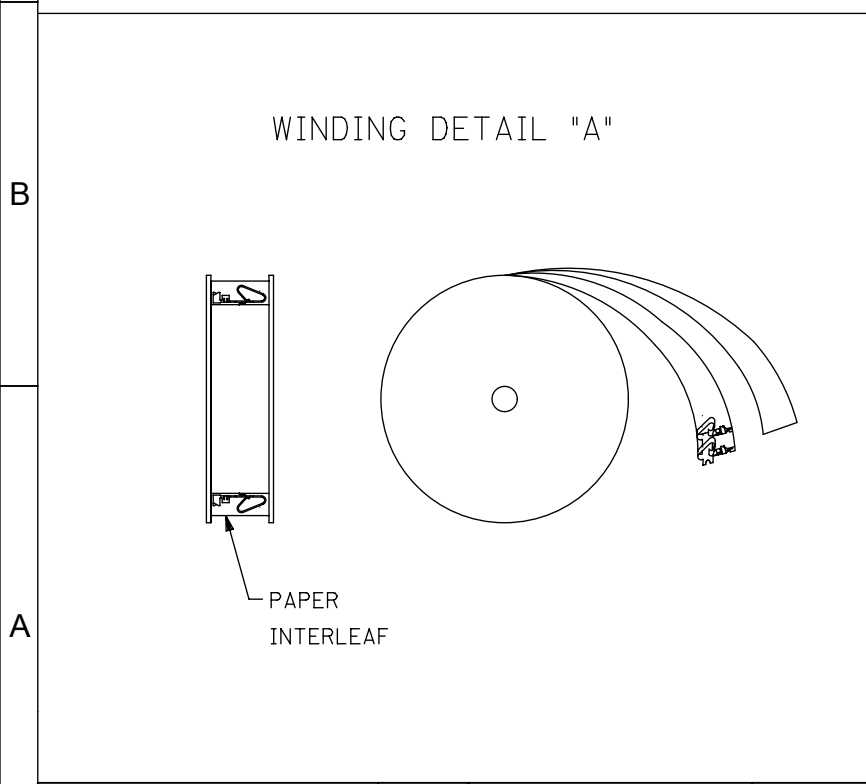
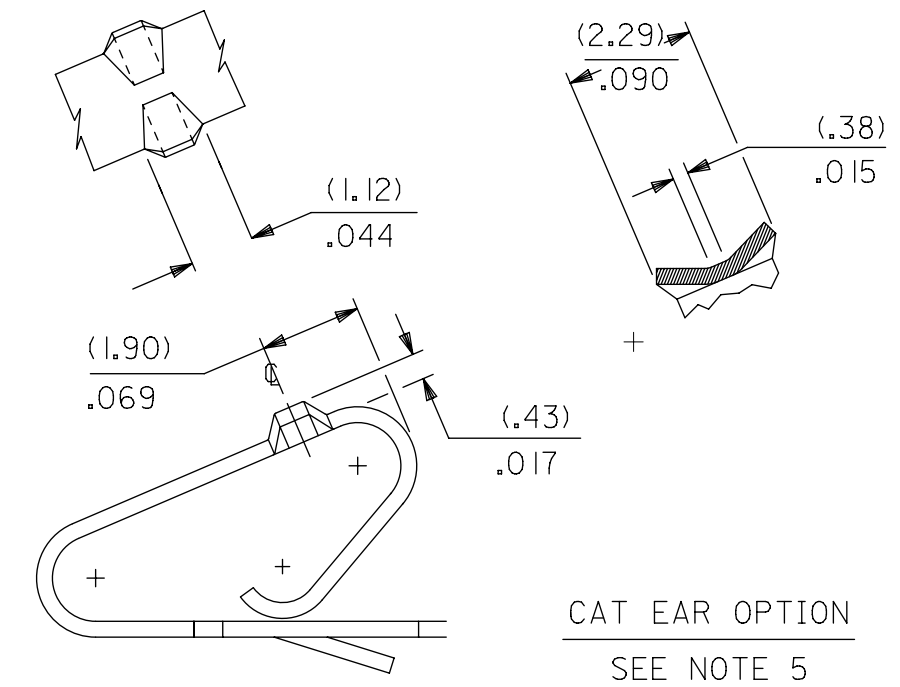
CRIMP TERMINAL
(3.96)/.156 CENTERS 22 TO 26 GA WIRE

PRODUCT CUSTOMER DRAWING

DOCUMENT NUMBER: SD-2578
 DOC TYPE: PSD
 DOC PART: 001
 REVISION: Y1

| 2578-(***)* | |
|-------------------|--------------------|
| PART NO. | ENG. NO. |
| | |
| | |
| 08-50-0107 | 2578-(P909) |
| 08-50-0108 | 2578-(P909)L |
| 08-50-0111 | 2578-(154) |
| 08-50-0112 | 2578-(154)L |
| 08-56-0107 | 2578-(550) |
| 08-56-0108 | 2578-(550)L |
| 08-55-0105 | 2578-(555) |
| 08-55-0106 | 2578-(555)L |
| 08-50-0061 | 2578-(224) |
| 08-50-0062 | 2578-(224)L |
| 08-55-0137 | 2578-(558)A |
| | |
| | |
| | |
| | |
| 08-55-0123 | 2578-(558) |
| | |

| 2578-B-(***)* | |
|---------------|----------------|
| PART NO. | ENG. NO. |
| | |
| | |
| 08-50-0133 | 2578-B-(P909) |
| 08-50-0134 | 2578-B-(P909)L |
| 08-65-0116 | 2578-B-(555) |
| 08-65-0117 | 2578-B-(555)L |
| 08-60-0003 | 2578-B-(122) |
| 08-60-0004 | 2578-B-(122)L |
| 08-65-0110 | 2578-B-(558) |
| 08-65-0111 | 2578-B-(558)L |
| 08-58-0125 | 2578-B-(550) |
| 08-58-0126 | 2578-B-(550)L |
| | |
| | |
| | |
| | |
| | |
| | |



| | | | | |
|---------|---|------------------------|---------|--|
| SYMBOLS | THIS DRAWING CONTAINS INFORMATION THAT IS PROPRIETARY TO MOLEX ELECTRONIC TECHNOLOGIES, LLC AND SHOULD NOT BE USED WITHOUT WRITTEN PERMISSION | | | |
| | DIMENSION UNITS | SCALE | | CURRENT REV DESC: NOTE 3 UPDATED |
| ▽ = 0 | MM/IN | 1:1 | | molex CRIMP TERMINAL (3.96)/.156 CENTERS 22 TO 26 GA WIRE PRODUCT CUSTOMER DRAWING |
| ▽ = 0 | GENERAL TOLERANCES (UNLESS SPECIFIED) | | | |
| ▽ = 0 | | MM | INCH | |
| ▽ = 0 | 4 PLACES | ± | ± | |
| ▽ = 0 | 3 PLACES | ± | ± 0.01 | EC NO: 605479 DRWN: SS06 2018/09/11 CHK'D: ISHWARG 2018/10/05 APPR: ISHWARG 2018/10/05 |
| ▽ = 0 | 2 PLACES | ± 0.25 | ± 0.014 | INITIAL REVISION: DRWN: PEREZ/AR 1987/01/29 APPR: FSMITH 2014/04/21 |
| ▽ = 0 | 1 PLACE | ± 0.36 | ± | |
| ▽ = 0 | 0 PLACES | ± | ± | DOCUMENT NUMBER: SD-2578 DOC TYPE: PSD DOC PART: 001 REVISION: Y1 |
| ▽ = 0 | ANGULAR TOL | ± 0.5 ° | | MATERIAL NUMBER: SEE CHART CUSTOMER: GENERAL MARKET SHEET NUMBER: 2 OF 2 |
| ▽ = 0 | DRAFT WHERE APPLICABLE MUST REMAIN WITHIN DIMENSIONS | THIRD ANGLE PROJECTION | | DRAWING: C-SIZE SERIES: 2578 |