



产品编号 : 08500159

Product Description : KK 254 Crimp Terminal, 22-30 AWG, Reel, Tin (Sn) Plating, Nickel (Ni) Under Plating

系列号 : 2759

状态 : Active

Product Category : Crimp Terminals

工程编号 : 2759-(154)B



文件和资源

图纸

图纸 008500159_sd.pdf

包装设计图 PK-2759-002-001.pdf


规格

产品规格 PS-10-07-001.pdf

测试摘要 TS-10-07-001.pdf

产物环境合规

合规

GADSL/IMDS	Not Relevant
China RoHS	
EU ELV	Not Relevant
Low-Halogen Status	Low-Halogen per IEC 61249-2-21
REACH SVHC	Not Contained per D(2023)3788-DC (14 Jun 2023)
EU RoHS	Compliant per EU 2015/863

多部分产品合规性声明

- Eu RoHS
- REACH SVHC
- Low-Halogen

多部分行业合规性文件

- IPC 1752A Class C

- IPC 1752A Class D
- Molex Product Compliance Declaration
- IEC-62474
- chemSHERPA (xml)

欧盟 RoHS 合格证书

产品详情

常规

状态	活动
类别	Crimp Terminals
系列	2759
说明	KK 254 Crimp Terminal, 22-30 AWG, Reel, Tin (Sn) Plating, Nickel (Ni) Under Plating
应用	Signal
产品系列	KK Interconnect Systems
产品名称	KK 254
UPC	800753835665

物理

性别	女
材料 - 金属	Brass
材料 - 接合部位电镀	Tin
材料 - 终端电镀	Tin
净重	0.068/g
包装形式	Reel
最薄镀层 - 接合部位	5.080µm
最薄镀层 - 端接	5.080µm
终端界面类型	Crimp or Compression
导线绝缘直径	1.57mm max.
线径规格 (AWG)	22, 24, 26, 28, 30
线缆尺寸mm ²	不适用

进程

无铅	不适用
----	-----

可连接使用部件

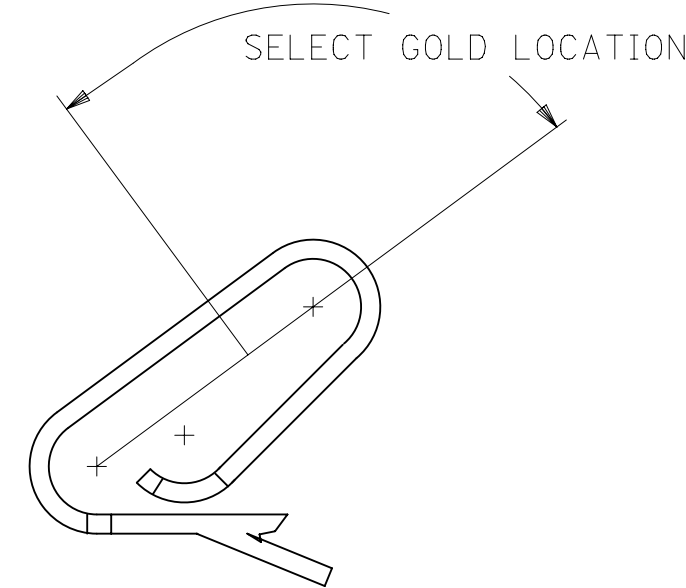
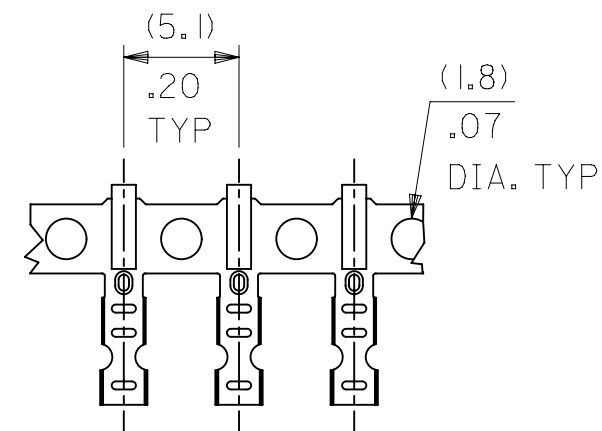
描述	产品编号
KK 254 Single Row Crimp Housings	<u>2695</u>
KK 2.50mm Pitch Single Row Receptacle Housings	<u>5051</u>

施工工具

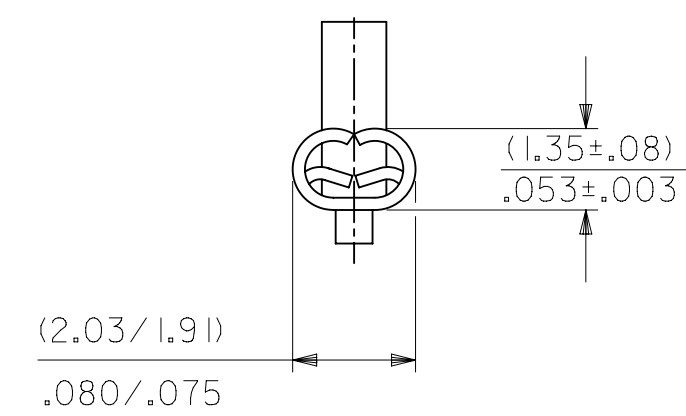
全局

描述	产品编号
Extraction Tool for KK 2.54mm Terminals, 22-30 AWG	<u>0011030022</u>
Insertion Tool for KK 2.54mm Terminals, 22-30 AWG	<u>0638120000</u>
Mini-Mac Applicator for KK and Cat Ear Terminals for 22-30 AWG Wire with Insulation Diameter 1.09-1.57mm and 22-28 AWG Wire with Insulation Diameter 1.20-1.70mm	<u>0638882000</u>
Mini-Mac Applicator for KK and Cat Ear Terminals for 22-30 AWG Wire with Insulation Diameter 0.96-1.20mm	<u>0638882100</u>

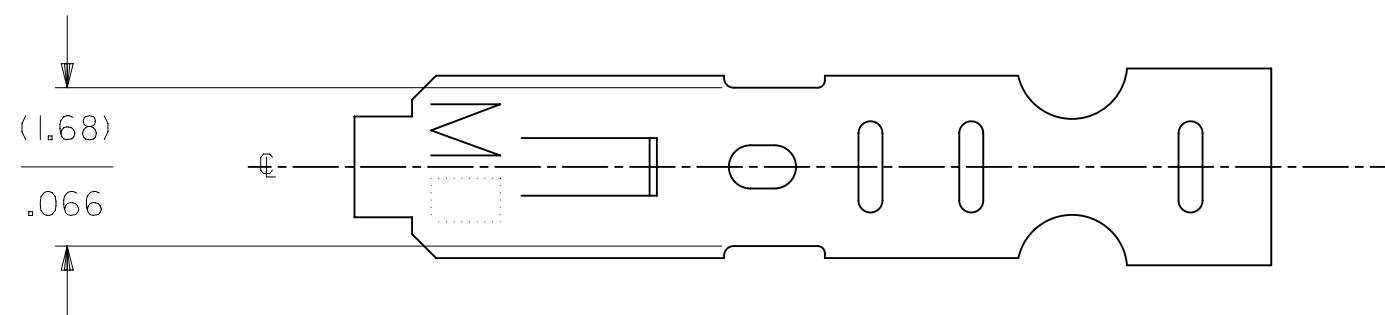
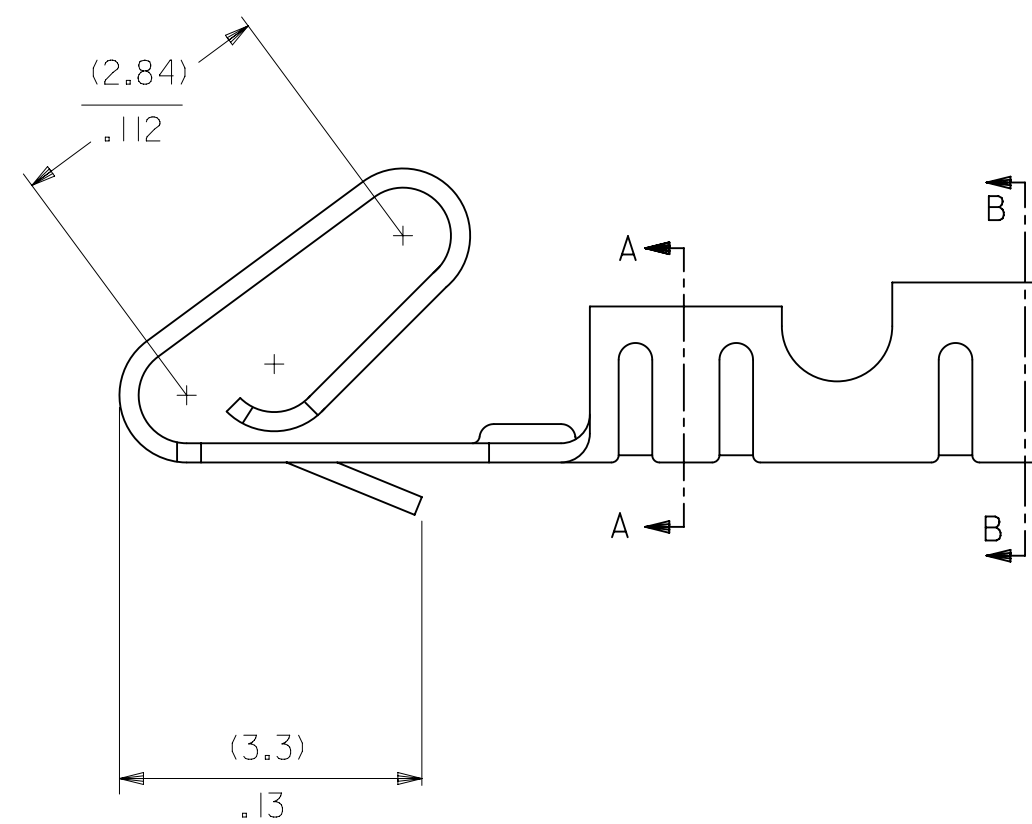
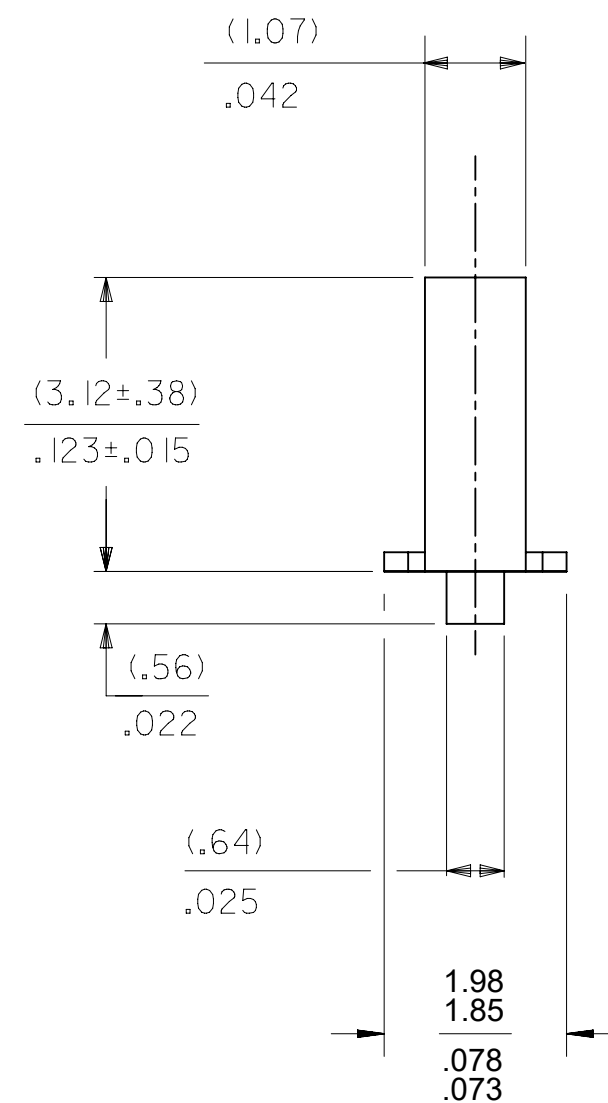
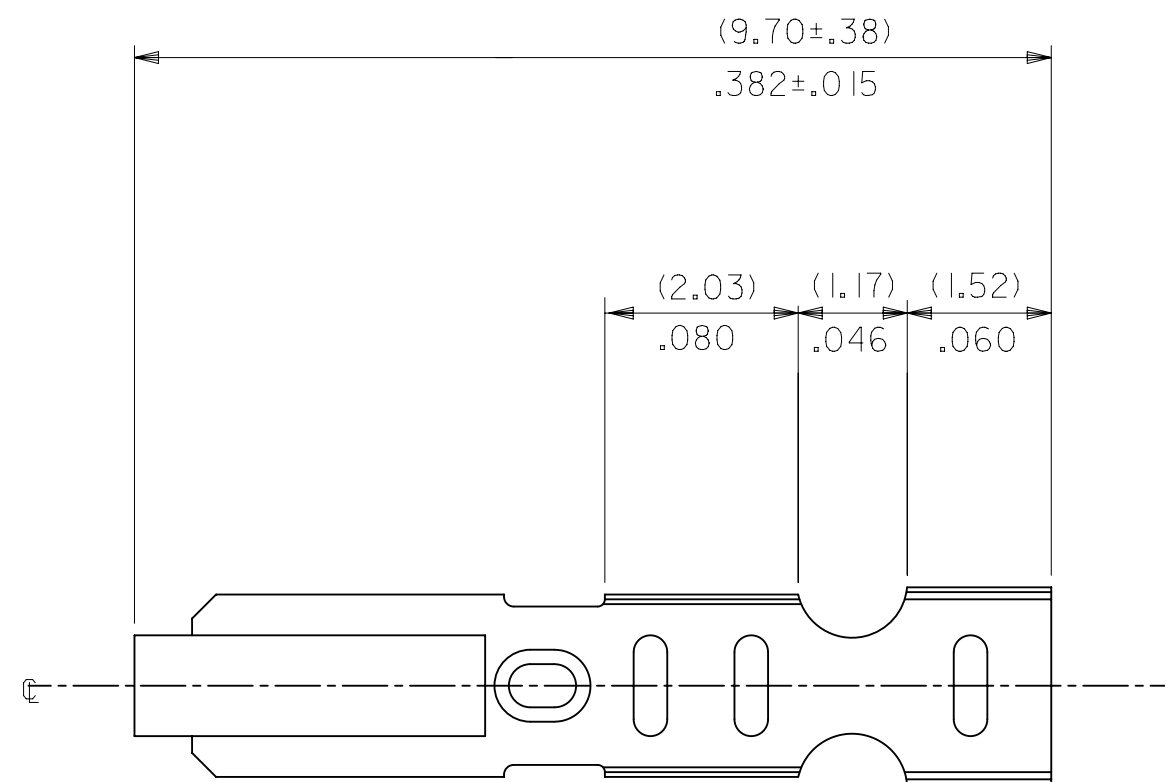
CARRIER VIEW



CRIMP DETAIL

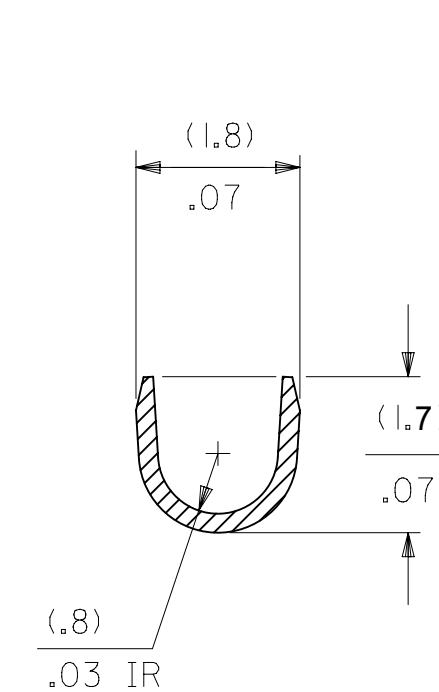


CRIMPED TERMINAL 2759-(P909)C IS USED WITHOUT WIRE AND IS INSERTED INTO HOUSING TO PROVIDE TENSION WHEN ASSEMBLED TO HEADERS DURING SHIPMENT.

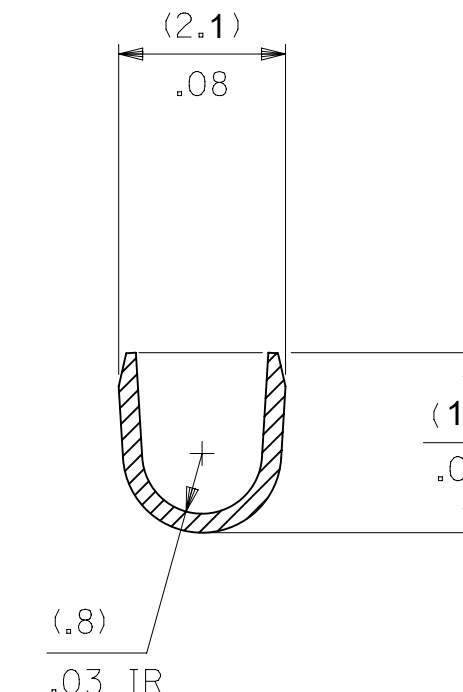


NOTES:

- MATERIAL:
(0.20)/.008 THICK BRASS
- FINISH:
122 - OVERALL TIN: (0.00381)/.000150 MIN. TIN OVER
(0.00076)/.000030 MIN NICKEL
154 - OVERALL TIN: (0.00254)/.000100 MIN. TIN OVER
(0.00127)/.000050 MIN NICKEL
P909 - OVERALL HOT TIN DIP: (0.00254)/.000100 MIN.
550 - SELECT GOLD: (0.00038)/.000015 MIN.
OVERALL GOLD FLASH: (0.00005)/.000002 MIN.
OVERALL NICKEL UNDERPLATE: (0.00076)/.000030 MIN.
555- SELECT GOLD (0.00038)/.000015 MIN.
OVERALL NICKEL UNDERPLATE: (0.00076)/.000030
558 - SELECT GOLD: (0.00076)/.000030 MIN.
OVERALL GOLD FLASH: (0.00005)/.000002 MIN.
OVERALL NICKEL UNDERPLATE: (0.00127)/.000050 MIN.
- PRODUCT SPEC: PS-10-07
- PACKAGING SPECIFICATION: LOOSE TERMINALS: PER PK-2759-001
CHAIN FORM TERMINALS: PER PK-2759-002
- CRIMP IS FOR 22-30 GA WIRE WITH (1.57)/.062 DIA INSULATION MAX.
- INSERTION FORCE OF TERMINAL INTO (2.54)/.100 CENTERLINE CONNECTOR IS 2.5 LBS. MAX
- TERMINAL RETENTION IN HOUSING IS 26.7N / 6LBS MIN. WHEN PULLED AT THE RATE OF (25.4MM) / 1 INCH PER MINUTE.
- DIMENSIONS GIVEN ACROSS CENTERLINES ARE SYMMETRICAL ABOUT THOSE CENTERLINES WITHIN HALF THE TOTAL TOLERANCE.
- THIS PART CONFORMS TO CLASS B REQUIREMENTS OF COSMETIC SPECIFICATION PS-45499-002.



SECTION A-A
BACKGROUND OMITTED



SECTION B-B
BACKGROUND OMITTED

2759-(***)*

FORM

L=LOOSE

C=LOOSE CRIMPED

A=CHAIN, PER WINDING DETAIL "A"

B=CHAIN, PER WINDING DETAIL "B"

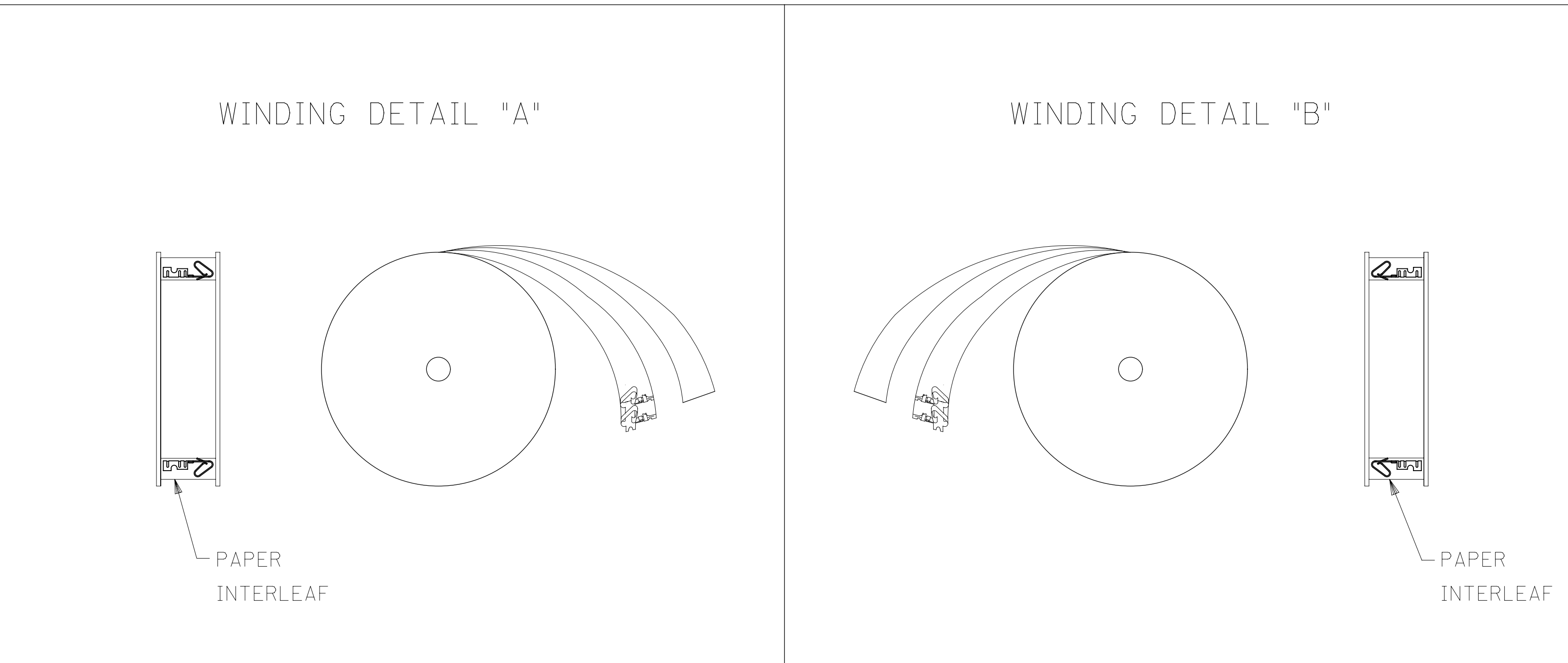
PLATING


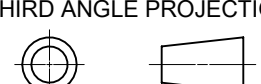
SEE NOTE 2

THIS DRAWING CONTAINS INFORMATION THAT IS PROPRIETARY TO MOLEX ELECTRONIC TECHNOLOGIES, LLC AND SHOULD NOT BE USED WITHOUT WRITTEN PERMISSION

DIMENSION UNITS MM/IN		SCALE 1:1		CURRENT REV DESC: OBSOLETE PART NUMBER AS PER PCN#509451		molex			
GENERAL TOLERANCES (UNLESS SPECIFIED)				EC NO: 686785					
		MM	INCH	DRWN: SUGEEB		PRODUCT CUSTOMER DRAWING			
4 PLACES	±		±	CHK'D: GGA		DOCUMENT NUMBER			
3 PLACES	±	0.25	± 0.01	APPR: GGA		DOC TYPE			
2 PLACES	±	0.25	± 0.014	INITIAL REVISION:		DOC PART			
1 PLACE	±	0.36	±	DRWN: SAMIEC		REVISION			
0 PLACES	±		±	APPR: FSMITH		SD-2759			
ANGULAR TOL		± 0.5 °		DRAWING		PSD			
DRAFT WHERE APPLICABLE MUST REMAIN WITHIN DIMENSIONS		THIRD ANGLE PROJECTION		SERIES		001			
				D-SIZE		AW3			
				2759		1 OF 2			
				SEE TABLE		GENERAL MARKET			
				GENERAL MARKET					

2759-(***)*		
PART NO.	ENG. NO.	
08-55-0101	2759-(555)B	
08-55-0102	2759-(555)L	
08-55-0126	2759-(555)A	
08-56-0109	2759-(550)B	
08-56-0110	2759-(550)L	
08-50-0113	2759-(P909)B	
08-51-0108	2759-(122)B	
	2759-(122)L	
08-50-0274	2759-(P909)B	
08-55-0130	2759-(558)B	
08-55-0131	2759-(558)L	
08-50-0160	2759-(154)L	
08-50-0159	2759-(154)B	



THIS DRAWING CONTAINS INFORMATION THAT IS PROPRIETARY TO MOLEX ELECTRONIC TECHNOLOGIES, LLC AND SHOULD NOT BE USED WITHOUT WRITTEN PERMISSION AS PER PCN#509451													
DIMENSION UNITS		SCALE		CURRENT REV DESC: OBSOLETE PART NUMBER AS PER PCN#509451									
MM/IN		1:1		 CRIMP TERMINAL 22-30 GA WIRE PRODUCT CUSTOMER DRAWING									
GENERAL TOLERANCES (UNLESS SPECIFIED)										EC NO: 686785		2021/08/31	
		MM	INCH							DRWN: SUGEEB		2022/02/28	
4 PLACES		±	±							CHK'D: GGA		2022/02/28	
3 PLACES		±	± 0.01							APPR: GGA		2022/02/28	
2 PLACES		± 0.25	± 0.014							INITIAL REVISION:			
1 PLACE		± 0.36	±	DRWN: SAMIEC		1987/07/28							
0 PLACES		±	±	APPR: FSMITH		2012/03/20							
ANGULAR TOL		± 0.5°		THIRD ANGLE PROJECTION		DRAWING		SERIES					
DRAFT WHERE APPLICABLE MUST REMAIN WITHIN DIMENSIONS						D-SIZE		2759					
DOCUMENT NUMBER		DOC TYPE		DOC PART		REVISION		SHEET NUMBER					
SD-2759		PSD		001		AW3		2 OF 2					
MATERIAL NUMBER		CUSTOMER		SEE TABLE		GENERAL MARKET							

DOCUMENT STATUS	P1	RELEASE DATE	2022/02/28	11:53:39
-----------------	----	--------------	------------	----------