



产品编号 : 08520072

系列号 : 2478

Product Category : Crimp Terminals

Packaging Alternative : 08520071 (Reel)

Product Description : KK 396 Crimp Terminal 2478, 18-24 AWG, Bag, Phosphor Bronze, Tin (Sn)

状态 : Active

工程编号 : 2478-3-(P909)L

文件和资源

图纸

图纸 008520072_sd.pdf


包装设计图 PK-2759-001-001.pdf

规格

产品规格 PS-08-50-001.pdf

产物环境合规

合规

GADSL/IMDS	Compliant with Exemption 44
China RoHS	
EU ELV	Not Relevant
Low-Halogen Status	Low-Halogen per IEC 61249-2-21
REACH SVHC	Not Contained per D(2023)8585-DC (23 Jan 2024)
EU RoHS	Compliant per EU 2015/863

多部分产品合规性声明

- Eu RoHS
- REACH SVHC
- Low-Halogen

- IPC 1752A Class C
- IPC 1752A Class D
- Molex Product Compliance Declaration
- IEC-62474
- chemSHERPA (xml)

欧盟 RoHS 合格证书

产品详情

常规

状态	活动
类别	Crimp Terminals
系列	2478
说明	KK 396 Crimp Terminal 2478, 18-24 AWG, Bag, Phosphor Bronze, Tin (Sn)
应用	Power, Wire-to-Board
产品系列	KK Interconnect Systems
产品名称	KK 396, KK 508
UPC	800754225632

物理

性别	女
材料 - 金属	Phosphor Bronze
材料 - 接合部位电镀	Tin
材料 - 终端电镀	Tin
净重	0.240/g
包装形式	Bag
最薄镀层 - 接合部位	2.540µm
最薄镀层 - 端接	2.540µm
终端界面类型	Crimp or Compression
导线绝缘直径	2.79mm max.
线径规格 (AWG)	18, 20, 22, 24
线缆尺寸mm ²	不适用

进程

无铅	不适用
----	-----

可连接使用部件

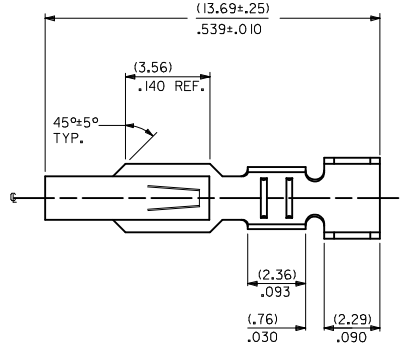
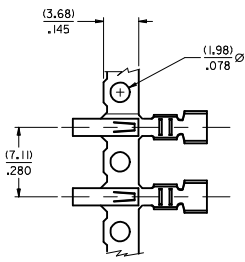
描述	产品编号
KK 3.96mm Single Row Crimp Housings	<u>2139</u>

KK 3.96mm Single Row Crimp Housings	<u>3069</u>
KK 3.96mm Crimp Housings	<u>41695</u>

施工工具

全局

描述	产品编号
Extraction Tool for Flat Blade, 3.96mm KK, 2.00mm, 3.96mm EdgeMate, and Ultra-Fit Terminals	<u>11030016</u>
Hand Crimp Tool for 3.96mm Pitch KK Crimp Terminals, 18-24 AWG	<u>638279500</u>

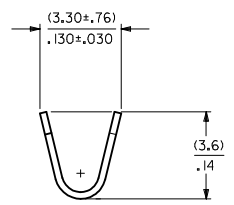
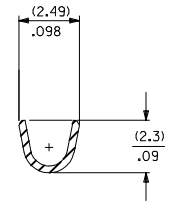
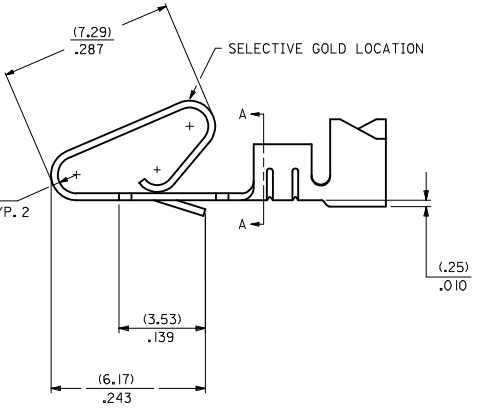
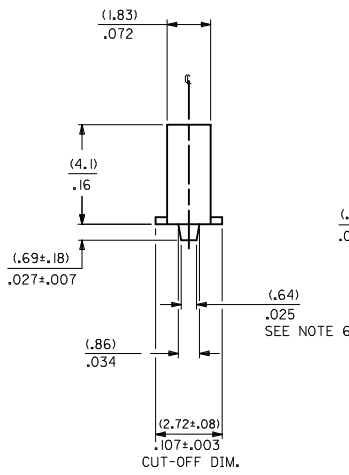


MATERIAL CODE
 (.27)/.0106 THK
 1=BRASS
 3=PHOS BRONZE

WINDING SPEC.
 A=CHAIN, PER WINDING DETAIL "A"
 BLANK=CHAIN, PER WINDING DETAIL "B"
 L=LOOSE

OPTION CODE
 BLANK=AS SHOWN
 C=CAT EAR OPTION

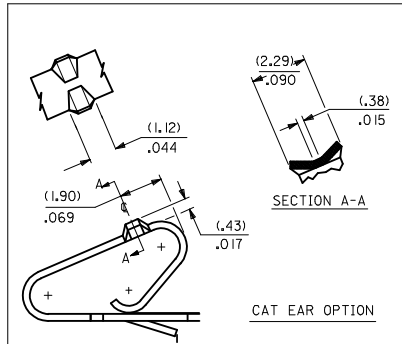
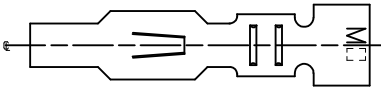
- FINISH:
- (P909) OVERALL HOT TIN DIP: (0.00254)/.000100 MIN.
 - (122) OVERALL TIN: (0.00381)/.000150 MIN.
OVER (0.00076)/.000030 MIN. NICKEL
 - (154) OVERALL TIN: (0.00254)/.000100 MIN.
OVER (0.00127)/.000050 MIN. NICKEL
 - (224) OVERALL MATTE TIN: (0.00508)/.000200 MIN.
OVER (0.00127)/.000050 MIN. NICKEL
 - (550) SELECT GOLD: (0.00038)/.000015 MIN.
OVERALL GOLD FLASH: (0.00005)/.000002 MIN.
OVERALL NICKEL UNDERPLATE: (0.00076)/.000030 MIN.
 - (555) SELECT GOLD: (0.00038)/.000015 MIN.
OVERALL NICKEL UNDERPLATE: (0.00076)/.000030 MIN.
 - (558) SELECT GOLD: (0.00076)/.000030 MIN.
OVERALL GOLD FLASH: (0.00005)/.000002 MIN.
OVERALL NICKEL UNDERPLATE: (0.00127)/.000050 MIN.
 - (561) SELECT GOLD: (0.00076)/.000030 MIN.
OVERALL NICKEL UNDERPLATE: (0.00127)/.000050 MIN.
 - (591) SELECT GOLD: (0.00127)/.000050 MIN.
OVERALL GOLD FLASH: (0.00005)/.000002 MIN.
OVERALL NICKEL UNDERPLATE: (0.00127)/.000050 MIN.



SECTION A-A
BACKGROUND OMITTED

BACKGROUND OMITTED

- NOTES:
- MATERIAL: SEE LEGEND
 - FINISH: SEE LEGEND
 - THIS PART CONFORMS TO PRODUCT SPECIFICATION PS-08-50.
 - PACKAGING SPECIFICATION: LOOSE TERMINALS: PER PK-2759-001
CHAIN FORM TERMINALS: NONE
 - DIMENSIONS GIVEN ACROSS CENTERLINES ARE SYMMETRICAL ABOUT THOSE CENTERLINES WITHIN HALF THE TOTAL TOLERANCE.
 - (0.86 ±0.05)/.034 ±.002 IS AN OPTIONAL DESIGN.
 - CRIMP ACCEPTS 18 TO 24 AWG WIRE WITH (2.79)/.110 MAX. INSULATION DIAMETER. AND CAN ACCEPT (3.00)/.118 MAX. INSULATION DIAMETER WITH SPECIAL TOOLING.
 - TERMINAL FOR USE IN 2139, 3001, 3069, AND 91813 SERIES HOUSINGS WITH (2.54)/.100 MAX. INSULATION DIAMETER, 2574, 6422, AND 5239 SERIES HOUSINGS WITH (2.79)/.110 MAX. INSULATION DIAMETER. AND 41695 SERIES HOUSING WITH (3.00)/.118 MAX. INSULATION DIAMETER.
 - THIS PART CONFORMS TO CLASS B REQUIREMENTS OF COSMETIC SPECIFICATION PS-45499-002.



SECTION A-A

CAT EAR OPTION

ADD WINDING VIEWS EC NO. UCF2014-4131 DRAWN/KIPPER 2014/04/07 CHYONGKUN 2014/04/07 APPROV:FSMTH 2014/04/21	QUALITY SYMBOLS	GENERAL TOLERANCES (UNLESS SPECIFIED)	DIMENSION STYLE	SCALE	DESIGN UNITS	THIRD ANGLE PROJECTION	
	∇=0 ∇=0 ∇=0	mm INCH 4 PLACES ±.010 ±.010 3 PLACES ±.025 ±.014 2 PLACES ±.036 ±.014 1 PLACE ±.036 ±.014 0 PLACE ±.036 ±.014	MM/IN	10:1	INCH	DRAWN BY DATE SAMIEC 06/03/86 CHECKED BY DATE PATEL 06/03/86 APPROVED BY DATE FSMITH 2012/03/20	CRIMP TERMINAL .156 CENTERS 18 TO 24 GA WIRE molex
	DRAFT WHERE APPLICABLE MUST REMAIN WITHIN DIMENSIONS	ANGULAR ±1/2° SIZE D	MATERIAL NO.	DOCUMENT NO.	SHEET NO.		
		SEE CHART	SD-2478	SD-2478	1 OF 2		

