



产品编号 : [08520112](#)

Product Description : KK Trifurcon Crimp Terminal 6838, 18-20 AWG, Reel, Phosphor Bronze Tin(Sn)

系列号 : 6838

状态 : Active

Product Category : Crimp Terminals

工程编号 : 6838-A(P909)

Packaging Alternative : 0008520113 (Bag)



## 文件和资源

### 图纸

[图纸 008520112\\_sd.pdf](#)

[包装设计图 PK-2759-002-001.pdf](#)

### 规格

[产品规格 PS-40-02-001.pdf](#)

## 产物环境合规

### 合规

GADSL/IMDS	Not Relevant
China RoHS	
EU ELV	Compliant per 2000/53/EC
Low-Halogen Status	Low-Halogen per IEC 61249-2-21
REACH SVHC	Not Contained per D(2023)3788-DC (14 Jun 2023)
EU RoHS	Compliant per EU 2015/863

### 多部分产品合规性声明

- Eu RoHS
- REACH SVHC
- Low-Halogen

### 多部分行业合规性文件

- IPC 1752A Class C
- IPC 1752A Class D

- Molex Product Compliance Declaration

- IEC-62474

- chemSHERPA (xml)

欧盟 RoHS 合格证书

---

## 产品详情

### 常规

状态	活动
类别	Crimp Terminals
系列	6838
说明	KK Trifurcon Crimp Terminal 6838, 18-20 AWG, Reel, Phosphor Bronze Tin(Sn)
应用	Power, Wire-to-Board
产品系列	KK Interconnect Systems
产品名称	KK 396, Trifurcon
UPC	800753614376

### 物理

性别	女
材料 - 金属	Phosphor Bronze
材料 - 接合部位电镀	Tin
材料 - 终端电镀	Tin
净重	0.200/g
包装形式	Reel
最薄镀层 - 接合部位	2.540µm
最薄镀层 - 端接	2.540µm
终端界面类型	Crimp or Compression
导线绝缘直径	2.79mm max.
线径规格 (AWG)	18, 20
线缆尺寸mm <sup>2</sup>	不适用

### 进程

无铅	不适用
----	-----

---

## 可连接使用部件

描述	产品编号
KK 3.96mm Crimp Housings	<u>41695</u>
KK 3.96mm Pitch Single Row Crimp Housings	<u>6442</u>

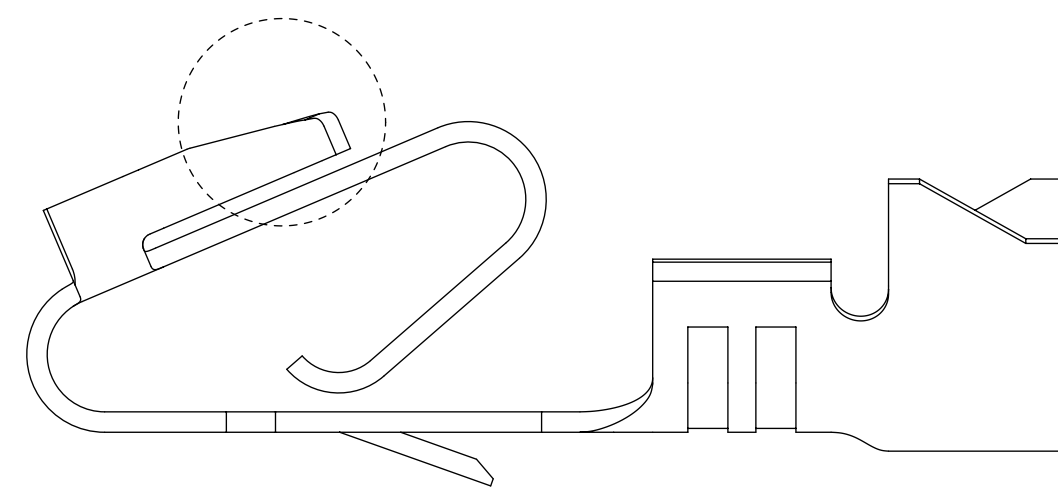
---

## 施工工具

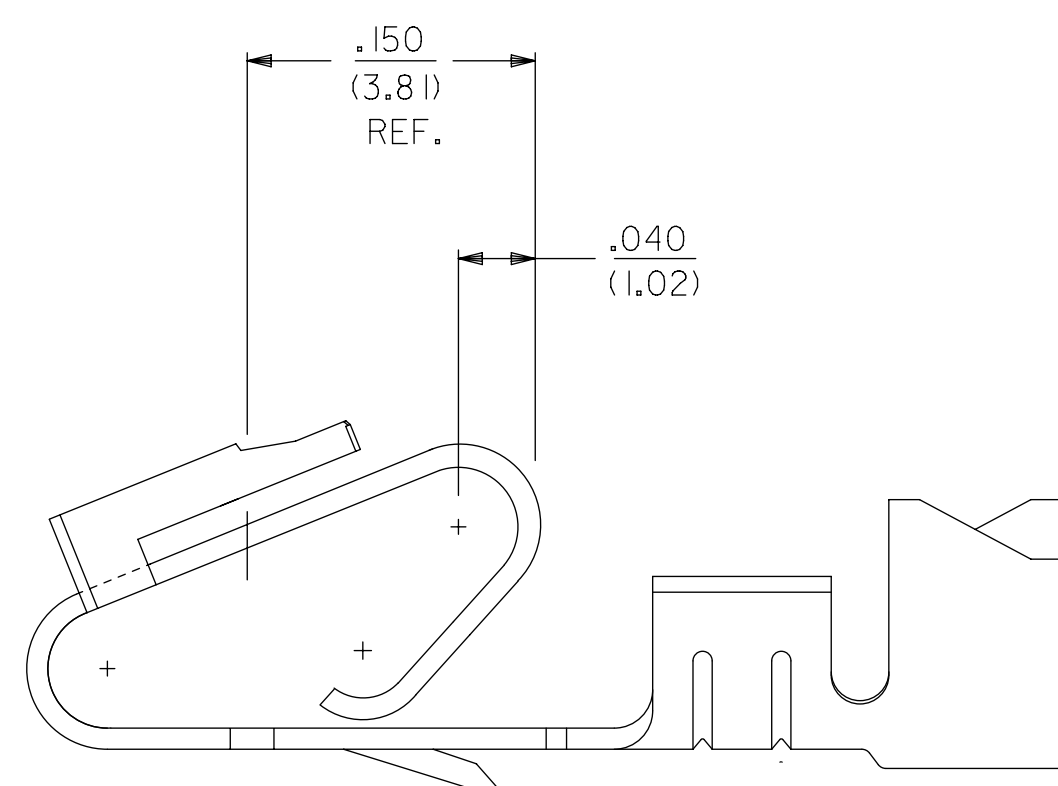
### 全局

描述	产品编号
Extraction Tool for Flat Blade, 3.96mm KK, 2.00mm, 3.96mm EdgeMate, and Ultra-Fit Terminals	<u>0011030016</u>
Terminator Die	<u>0011402096</u>
Hand Crimp Tool for 3.96mm Pitch KK Crimp Terminals, 18-24 AWG	<u>0638279500</u>
Mini-Mac Applicator for KK and Trifurcon, 3.96mm Terminals, 18-24 AWG, check ATS for Wire Insulation Diameter Compatibility	<u>0638885000</u>

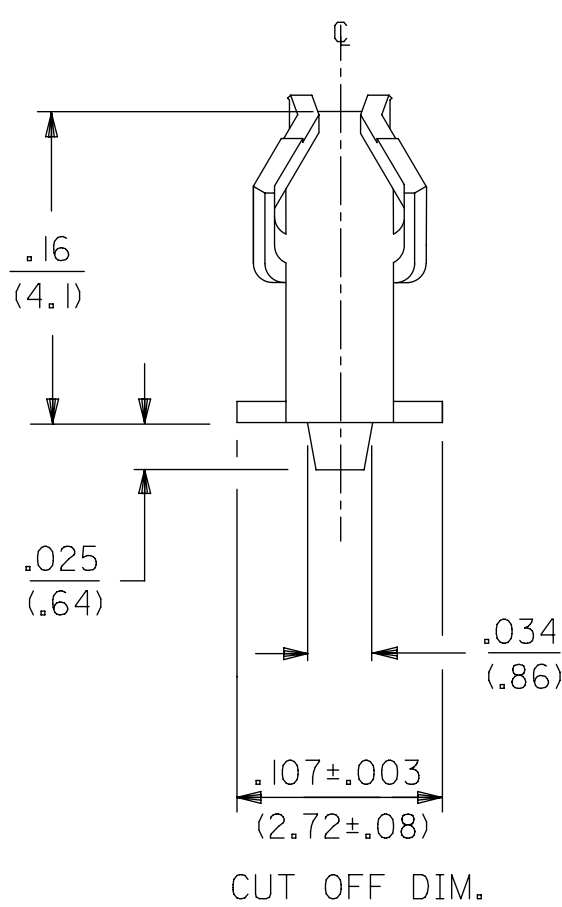
---



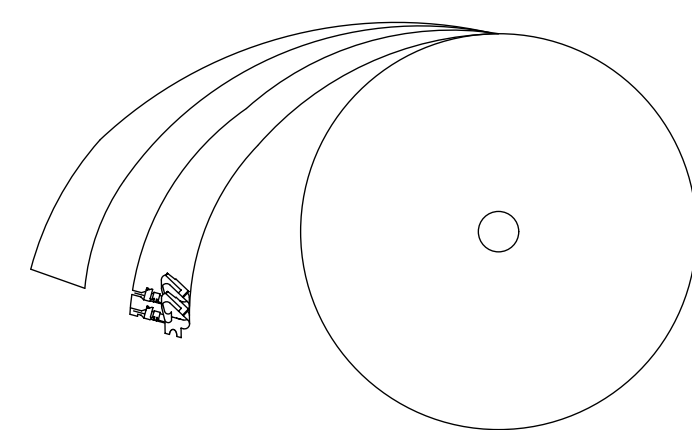
ALTERNATE GEOMETRY  
SEE NOTE 10



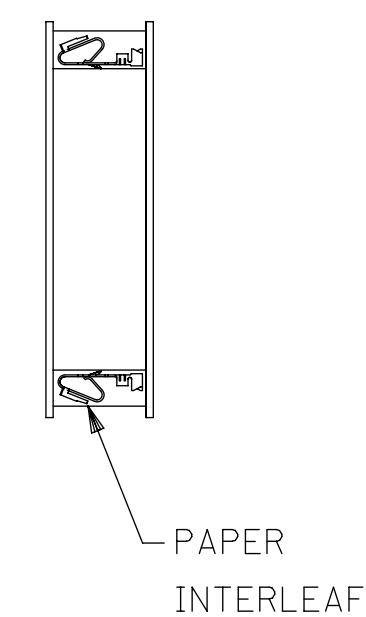
SELECTIVE PLATING  
LOCATION



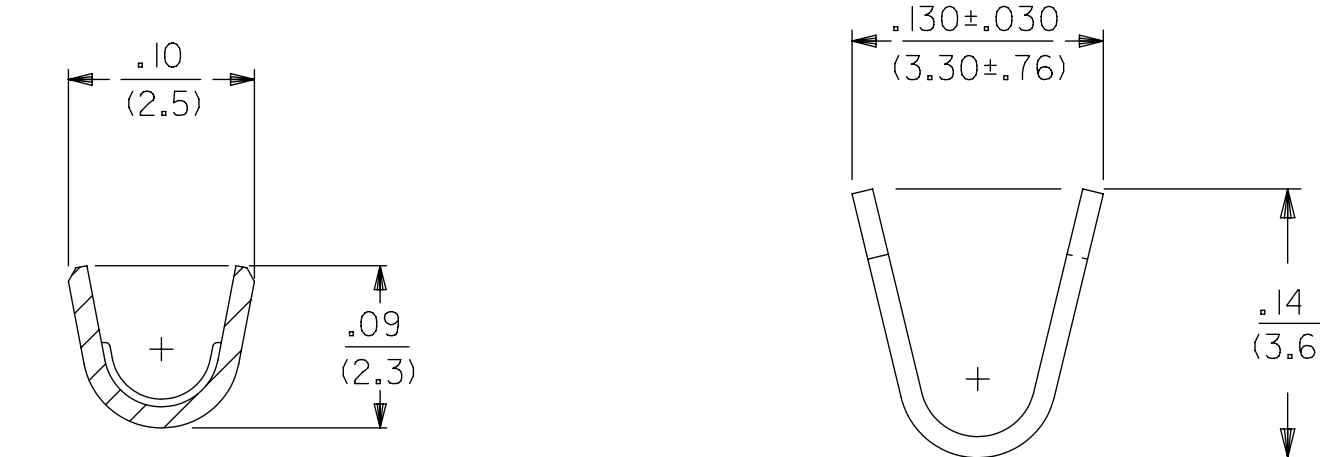
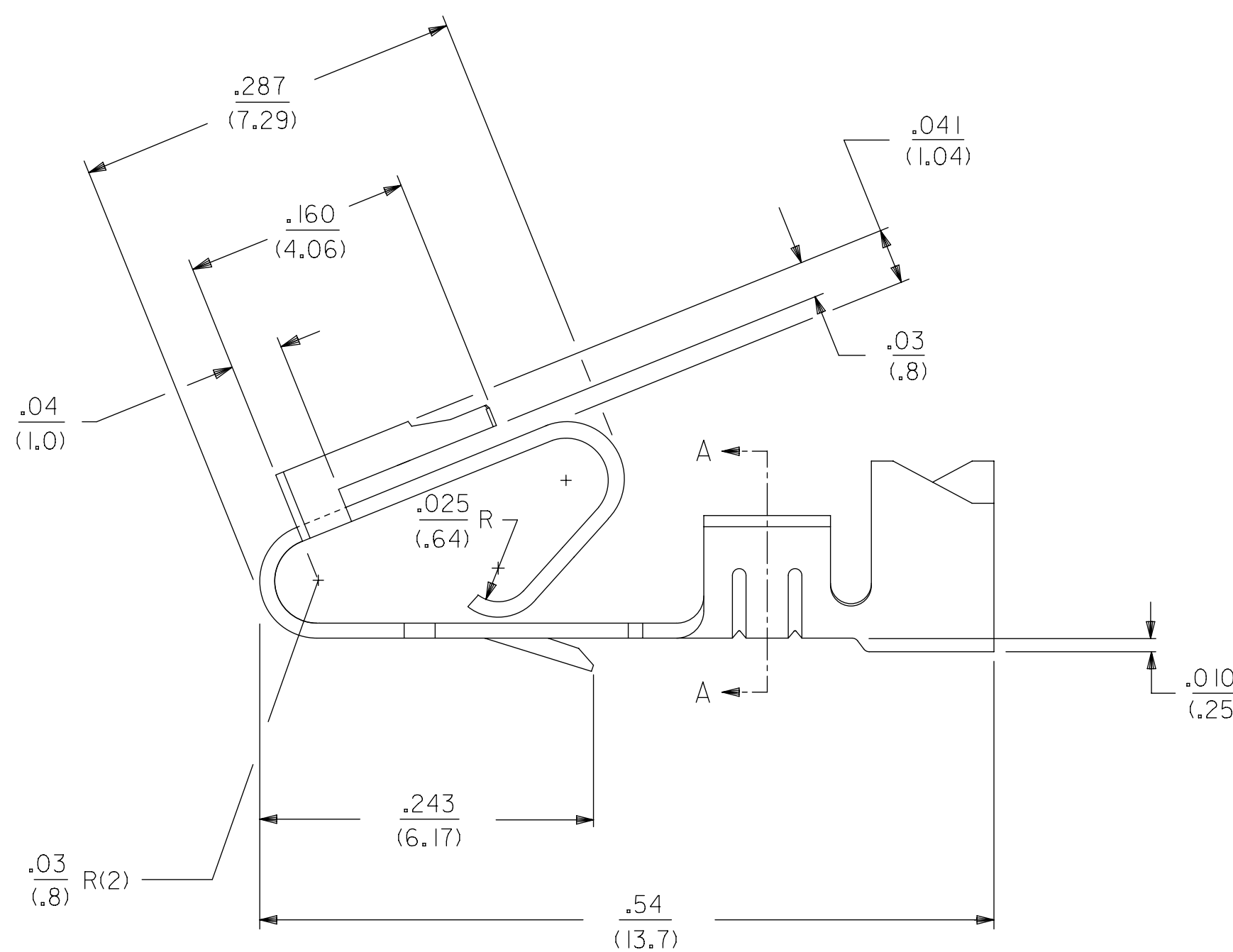
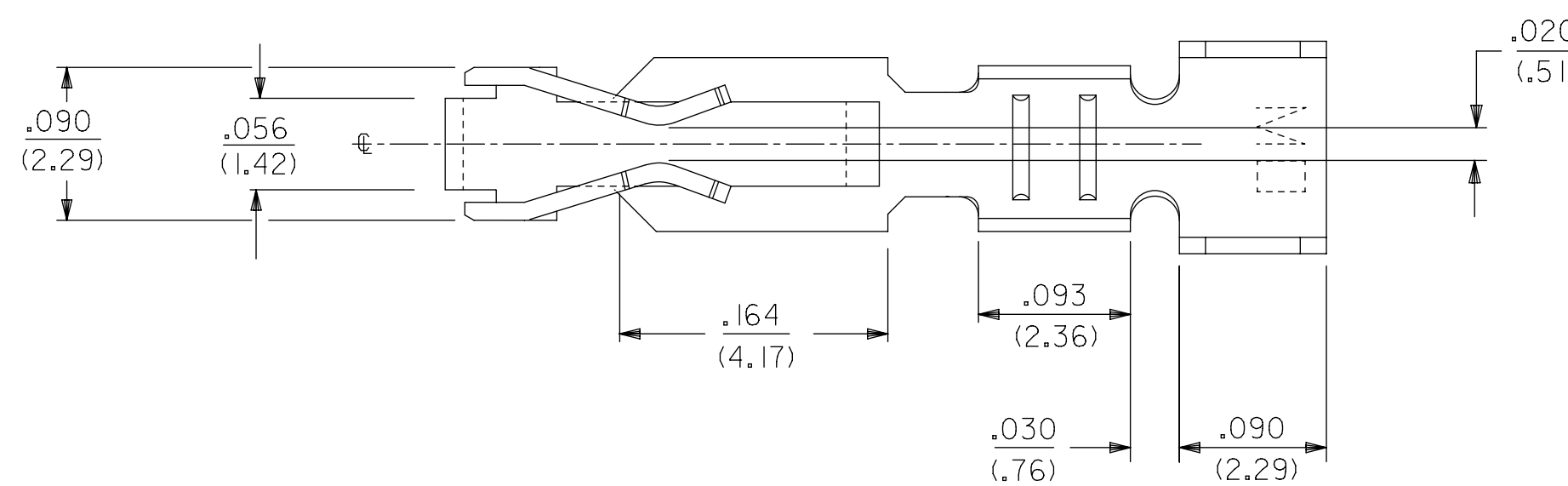
WINDING DETAIL "A"



WINDING DETAIL "B"



PAPER  
INTERLEAF



SECTION A-A

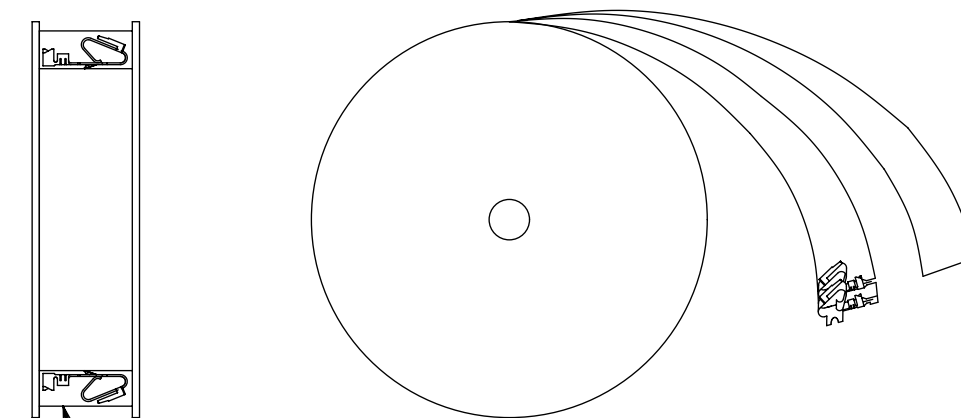
LEGEND: 6838-\*(\*)\*\*

MATERIAL:  
(.27)/.0106 THK  
BLANK=BRASS  
A=PHOS BRONZE

WINDING  
A= PER DETAIL A  
BLANK= PER DETAIL B  
FORM  
BLANK= CHAIN  
L= LOOSE

PLATING  
SEE NOTE 2

- NOTES:
1. MATERIAL: SEE LEGEND
  2. FINISH:  
909 - OVERALL HOT TIN DIP: .000100/(0.00254) MIN.  
154 - OVERALL TIN: .000100/(0.00254) MIN. OVER  
.000050/(0.00127) MIN. NICKEL.  
555 - SELECT HARD GOLD: .000015/(0.00038) MIN.  
OVERALL NICKEL: .000030/(0.00076) MIN.  
558 - SELECT HARD GOLD: .000030/(0.00076) MIN.  
OVERALL NICKEL: .000050/(0.00127) MIN.  
OVERALL HARD GOLD FLASH: .000002/(0.00005) MIN.  
561 - SELECT HARD GOLD: .000030/(0.00076) MIN.  
OVERALL NICKEL: .000050/(0.00127) MIN.
  3. PRODUCT SPECIFICATION: PS-40-02
  4. PACKAGING SPECIFICATION: CHAIN FORM: SEE PK-2759-002  
LOOSE FORM: SEE PK-2759-001
  5. TERMINAL FOR USE IN HOUSING SERIES 6442 AND 41695.
  6. SEE 7258 SERIES FOR THIS PART WITH CRIMP FOR 22-26 AWG. WIRE.
  7. CRIMP FOR 18 TO 20 GA. WIRE WITH MAX. INSULATION DIA. OF .100/(2.79),  
STRIP LENGTH OF .125/.100 / (3.18/2.54)
  8. DIMENSIONS GIVEN ACROSS CENTERLINES ARE SYMMETRICAL ABOUT  
THOSE CENTERLINES WITHIN HALF THE TOTAL TOLERANCE.
  9. THIS PART CONFORMS TO CLASS B REQUIREMENTS OF COSMETIC SPECIFICATION PS-45499-002.
  10. ALTERNATE GEOMETRY PRESENT ON SOME PART NUMBERS. SEE SHEET 2.
  11. TEXT ON PART IS FOR REFERENCE ONLY. TEXT AND TEXT LOCATION MAY VARY  
DEPENDING ON PART NUMBER AND/OR TOOL.



PAPER  
INTERLEAF

SYMBOLS										THIS DRAWING CONTAINS INFORMATION THAT IS PROPRIETARY TO MOLEX ELECTRONIC TECHNOLOGIES, LLC AND SHOULD NOT BE USED WITHOUT WRITTEN PERMISSION									
DIMENSION UNITS					SCALE					CURRENT REV DESC: NOTE 4 UPDATED									
IN/MM					1:1														
GENERAL TOLERANCES (UNLESS SPECIFIED)																			
4 PLACES ±					±					EC NO: 605479									
3 PLACES ±					± 0.01					DRWN: SS06 2018/09/17									
2 PLACES ±					± 0.25 ± 0.015					CHK'D: ISHWARG 2018/10/05									
1 PLACE ±					± 0.36 ±					APPR: ISHWARG 2018/10/05									
0 PLACES ±					±					INITIAL REVISION:									
ANGULAR TOL ± 0.5°										DRWN: GUZIK 1989/11/15									
DRAFT WHERE APPLICABLE MUST REMAIN WITHIN DIMENSIONS					THIRD ANGLE PROJECTION					APPR: LENZ 1989/11/15									
DRAWING			SERIES			MATERIAL NUMBER			CUSTOMER			SHEET NUMBER							
D-SIZE			6838			SEE CHART			GENERAL MARKET			1 OF 2							

**molex**

TRIFURCON TERMINAL  
CRIMP TYPE, .156 CENTERS 18 TO 20 AWG WIRE

PRODUCT CUSTOMER DRAWING

DOCUMENT NUMBER: **SD-6838** DOC TYPE: PSD DOC PART: 001 REVISION: AT

6838-(*)*-*		
PART NO.	ENG. NO.	
08-50-0187	6838-(P909)	<b>SEE NOTE 1</b>
08-50-0189	6838-(P909)L	<b>SEE NOTE 1</b>
08-50-0275	6838-(P909)-A	

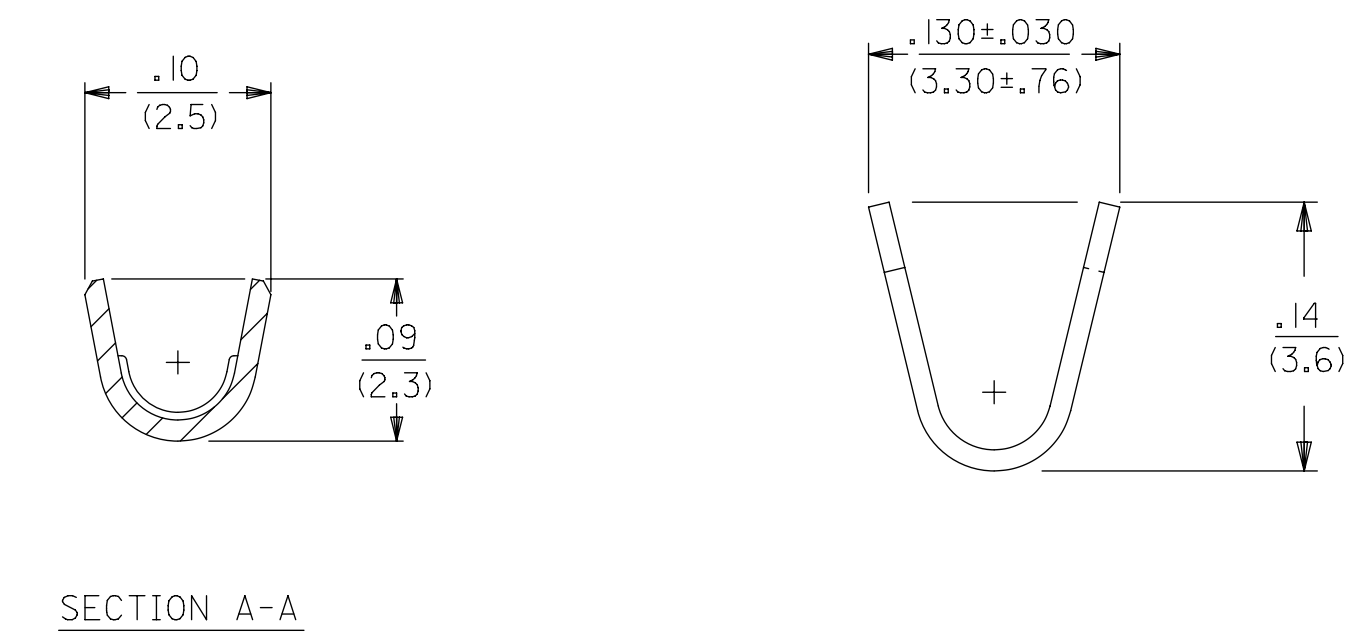
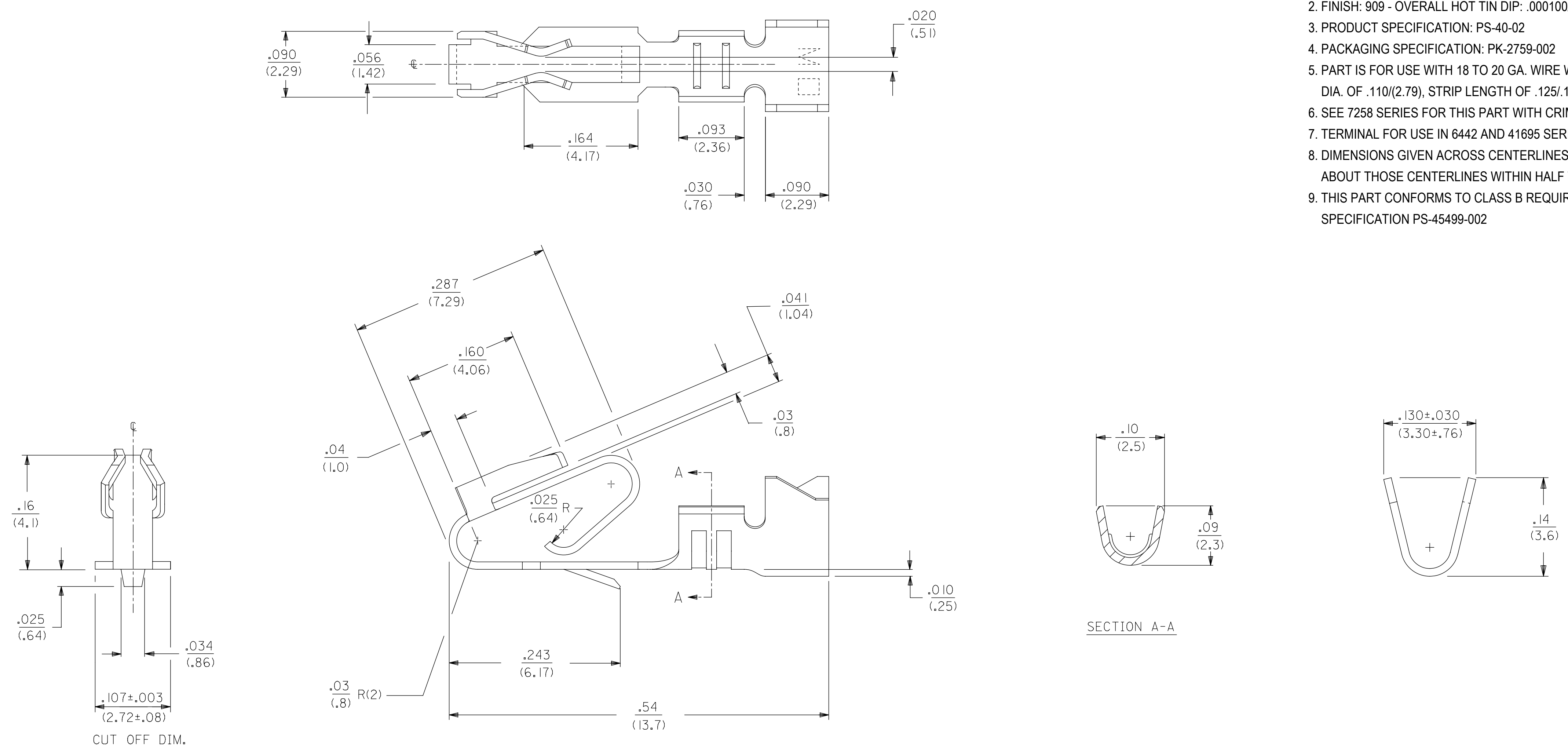
6838-A(*)*-*		
PART NO.	ENG. NO.	
08-58-0187	6838-A(P558)	
08-58-0189	6838-A(P558)L	
08-52-0112	6838-A(P909)	<b>SEE NOTE 1</b>
08-52-0113	6838-A(P909)L	<b>SEE NOTE 1</b>
08-50-0024	<b>6838-A(154)</b>	
08-50-0251	<b>6838-A(154)L</b>	
08-58-0105	6838-A(P555)	
08-58-0106	6838-A(P555)L	
08-58-0110	6838-A(P56 I)	<b>SEE NOTE 1</b>
08-58-0111	6838-A(P56 I)L	<b>SEE NOTE 1</b>
08-58-0118	6838-A(56 I)	
08-58-0119	6838-A(56 I)L	

**NOTES:**  
1. PART MANUFACTURED WITH ALTERNATE GEOMETRY. SEE SHEET 1.

THIS DRAWING CONTAINS INFORMATION THAT IS PROPRIETARY TO MOLEX ELECTRONIC TECHNOLOGIES, LLC AND SHOULD NOT BE USED WITHOUT WRITTEN PERMISSION										
<b>SYMBOLS</b>	DIMENSION UNITS	SCALE	CURRENT REV DESC: NOTE 4 UPDATED							
	<b>INCH</b>	<b>1:1</b>								
$\nabla = 0$	GENERAL TOLERANCES (UNLESS SPECIFIED)		EC NO: 605479 DRWN: SS06 2018/09/17 CHK'D: ISHWARG 2018/10/05 APPR: ISHWARG 2018/10/05 INITIAL REVISION: DRWN: DRWN BY 1989/11/15 APPR: APPR BY 1989/11/15 THIRD ANGLE PROJECTION  DRAWING SERIES <b>D-SIZE 6838</b> MATERIAL NUMBER CUSTOMER SHEET NUMBER							
$\nabla = 0$	MM	INCH								
$\nabla = 0$	4 PLACES ±	±								
$\nabla = 0$	3 PLACES ±	± 0.01								
$\nabla = 0$	2 PLACES ±	0.25 ± 0.015								
$\nabla = 0$	1 PLACE ±	0.36 ±								
$\nabla = 0$	0 PLACES ±	±								
$\nabla = 0$	ANGULAR TOL ±	0.5 °								
$\nabla = 0$	DRAFT WHERE APPLICABLE MUST REMAIN WITHIN DIMENSIONS									
	DOCUMENT NUMBER	DOC TYPE	DOC PART	REVISION						
	<b>SD-6838</b>	PSD	001	AT						
	SEE CHART	GENERAL MARKET		2 OF 2						

<b>DOCUMENT STATUS</b>	P1	<b>RELEASE DATE</b>	2018/10/05 09:56:24
------------------------	----	---------------------	---------------------

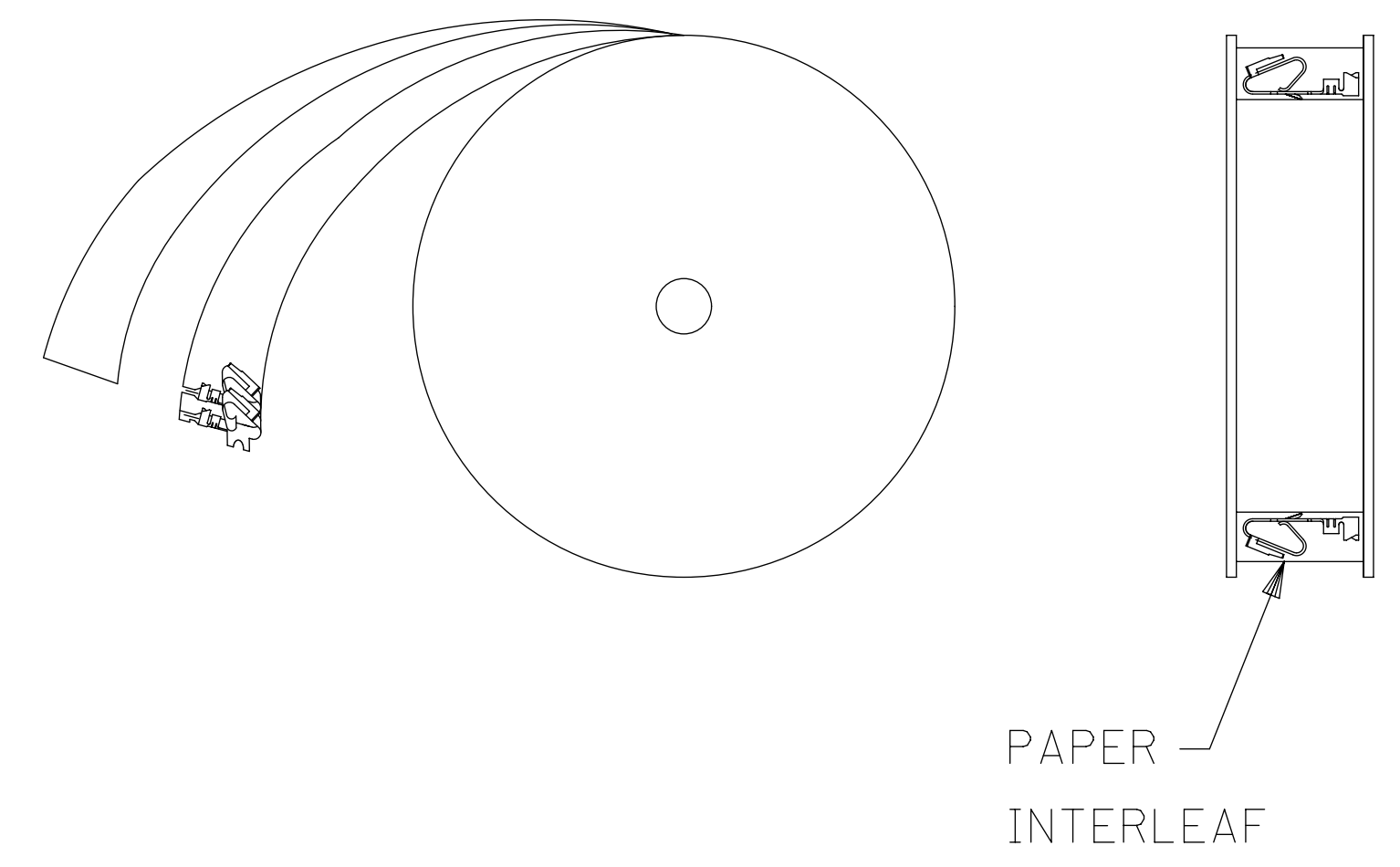
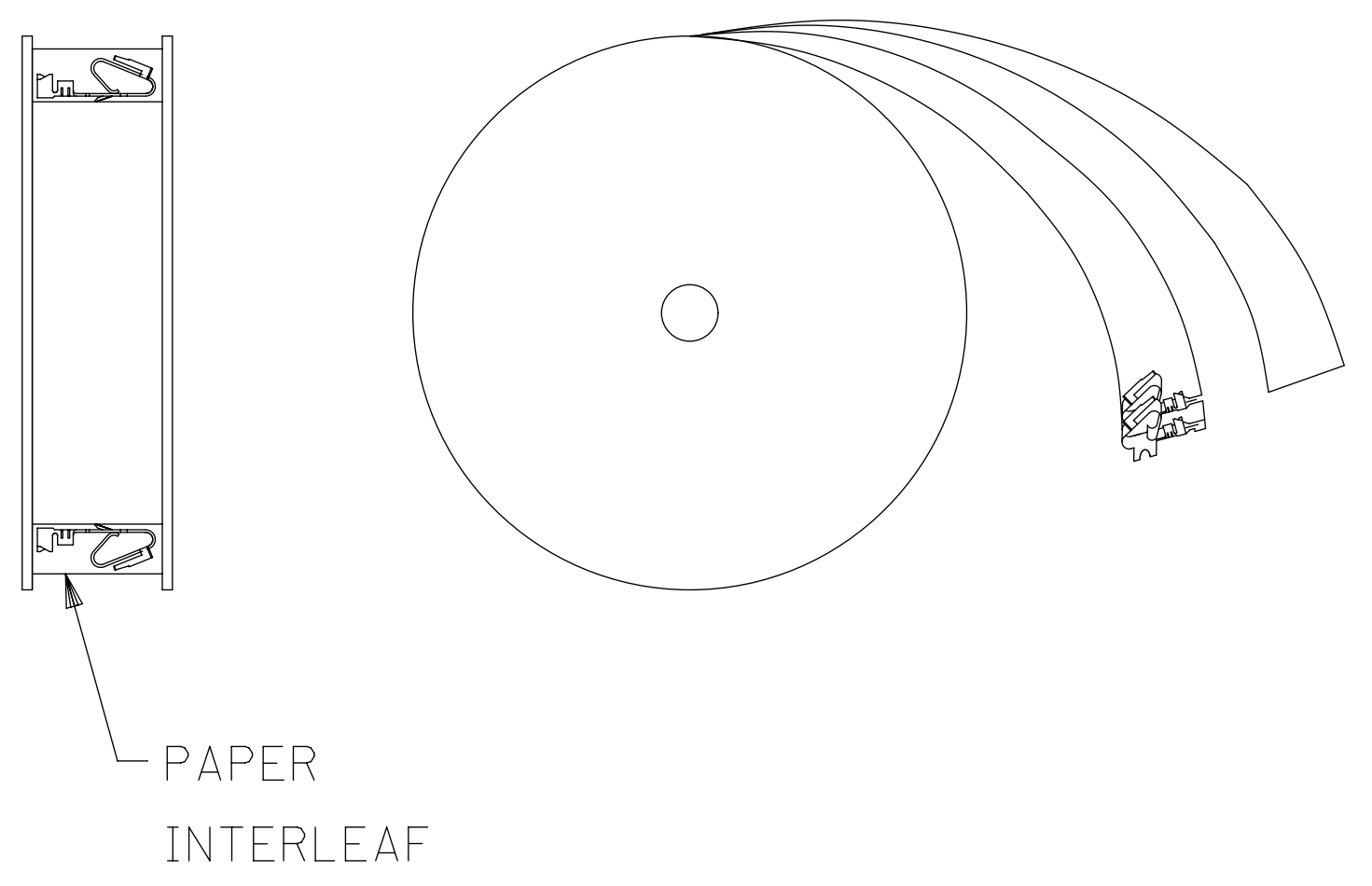
- NOTES:
1. MATERIAL: SEE LEGEND
  2. FINISH: 909 - OVERALL HOT TIN DIP: .000100/(0.00254) MIN.
  3. PRODUCT SPECIFICATION: PS-40-02
  4. PACKAGING SPECIFICATION: PK-2759-002
  5. PART IS FOR USE WITH 18 TO 20 GA. WIRE WITH MAX. INSULATION DIA. OF .110/(2.79), STRIP LENGTH OF .125/100 / (3.18/2.54)
  6. SEE 7258 SERIES FOR THIS PART WITH CRIMP FOR 22-26 AWG. WIRE
  7. TERMINAL FOR USE IN 6442 AND 41695 SERIES HOUSINGS
  8. DIMENSIONS GIVEN ACROSS CENTERLINES ARE SYMMETRICAL ABOUT THOSE CENTERLINES WITHIN HALF THE TOTAL TOLERANCE
  9. THIS PART CONFORMS TO CLASS B REQUIREMENTS OF COSMETIC SPECIFICATION PS-45499-002



LEGEND: 6838-\*(P909)\*  
 MATERIAL: (27)/.0106 THK  
 BLANK=BRASS  
 WINDING  
 BLANK= PER DETAIL B  
 FORM  
 BLANK= CHAIN  
 PLATING PER SDES-88  
 SEE NOTE 2

WINDING DETAIL "A"

WINDING DETAIL "B"



THIS DRAWING CONTAINS INFORMATION THAT IS PROPRIETARY TO MOLEX ELECTRONIC TECHNOLOGIES, LLC AND SHOULD NOT BE USED WITHOUT WRITTEN PERMISSION									
SYMBOLS		DIMENSION UNITS		SCALE		CURRENT REV DESC: NOTE 4 UPDATED			
▽ = 0		IN/MM		1:1		EC NO: 605479 DRWN: SS06 2018/09/12 CHK'D: ISHWARG 2018/10/05 APPR: ISHWARG 2018/10/05 INITIAL REVISION: DRWN: JJS 2004/07/29 APPR: YM 2004/07/29			
▽ = 0		GENERAL TOLERANCES (UNLESS SPECIFIED)							
▽ = 0		MM		INCH					
▽ = 0		4 PLACES ±		±					
▽ = 0		3 PLACES ±		± 0.01					
▽ = 0		2 PLACES ±		0.25 ± 0.015					
▽ = 0		1 PLACE ±		0.36 ±					
▽ = 0		0 PLACES ±		±					
▽ = 0		ANGULAR TOL		± 0.5°		DRWN: JJS 2004/07/29 APPR: YM 2004/07/29			
▽ = 0		DRAFT WHERE APPLICABLE MUST REMAIN WITHIN DIMENSIONS		THIRD ANGLE PROJECTION		DRAWING		SERIES	
▽ = 0				D-SIZE		6838		MATERIAL NUMBER	
▽ = 0						50291639		CUSTOMER	
▽ = 0						GENERAL MARKET		SHEET NUMBER	
▽ = 0						1 OF 1			