



产品编号 : [08520124](#)

Product Description : KK Trifurcon Crimp Terminal 7258, 22-26 AWG, Reel, Phosphor Bronze Tin(Sn)

系列号 : 7258

状态 : Active

Product Category : Crimp Terminals

工程编号 : 7258-A(P909)

Packaging Alternative : 0008520125 (Bag)



文件和资源

图纸

[图纸 008520124_sd.pdf](#)

[包装设计图 PK-2759-002-001.pdf](#)

规格

[产品规格 PS-40-02-001.pdf](#)

产物环境合规

合规

GADSL/IMDS	Not Relevant
China RoHS	
EU ELV	Not Relevant
Low-Halogen Status	Low-Halogen per IEC 61249-2-21
REACH SVHC	Not Contained per D(2023)3788-DC (14 Jun 2023)
EU RoHS	Compliant per EU 2015/863

多部分产品合规性声明

- Eu RoHS
- REACH SVHC
- Low-Halogen

多部分行业合规性文件

- IPC 1752A Class C

- IPC 1752A Class D
- Molex Product Compliance Declaration
- IEC-62474
- chemSHERPA (xml)

欧盟 RoHS 合格证书

产品详情

常规

状态	活动
类别	Crimp Terminals
系列	7258
说明	KK Trifurcon Crimp Terminal 7258, 22-26 AWG, Reel, Phosphor Bronze Tin(Sn)
应用	Power, Wire-to-Board
产品系列	KK Interconnect Systems
产品名称	KK, Trifurcon
UPC	800753756700

物理

性别	女
材料 - 金属	Phosphor Bronze
材料 - 接合部位电镀	Tin
材料 - 终端电镀	Tin
净重	0.159/g
包装形式	Reel
最薄镀层 - 接合部位	2.540µm
最薄镀层 - 端接	2.540µm
终端界面类型	Crimp or Compression
导线绝缘直径	1.65mm max.
线径规格 (AWG)	22, 24, 26
线缆尺寸mm ²	不适用

进程

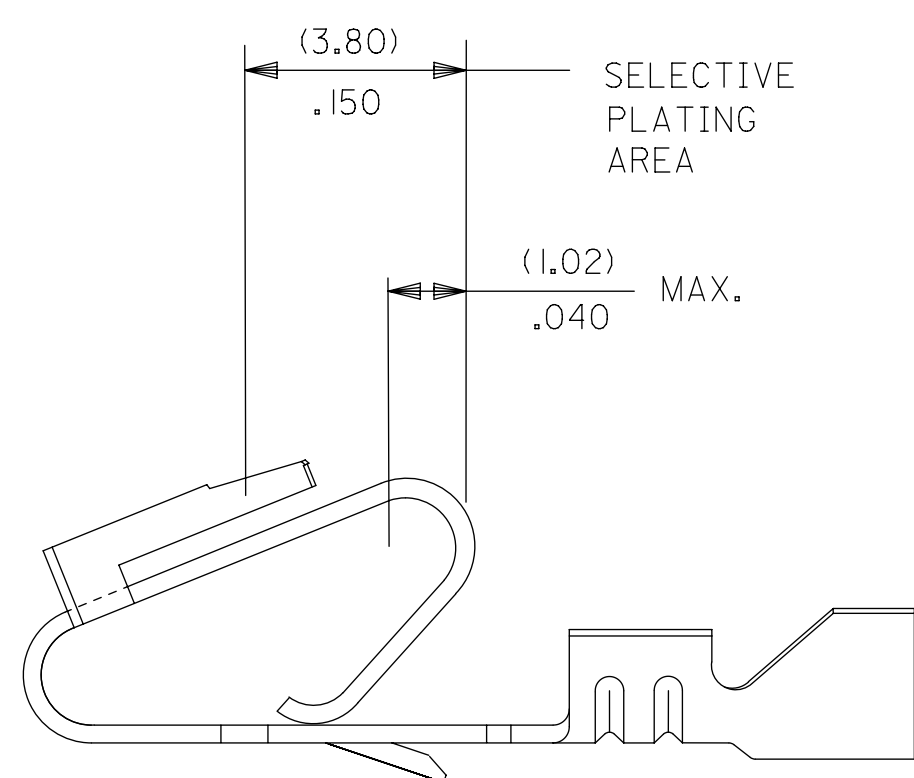
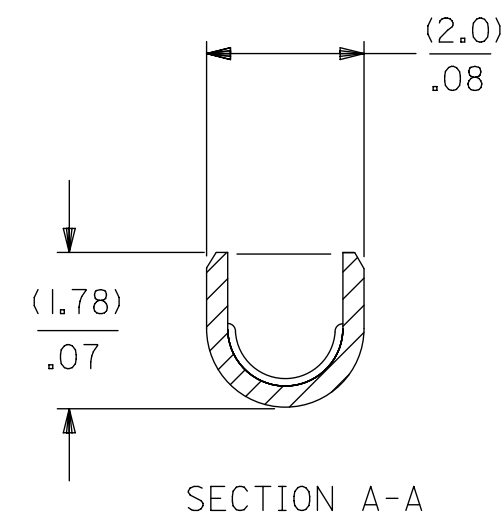
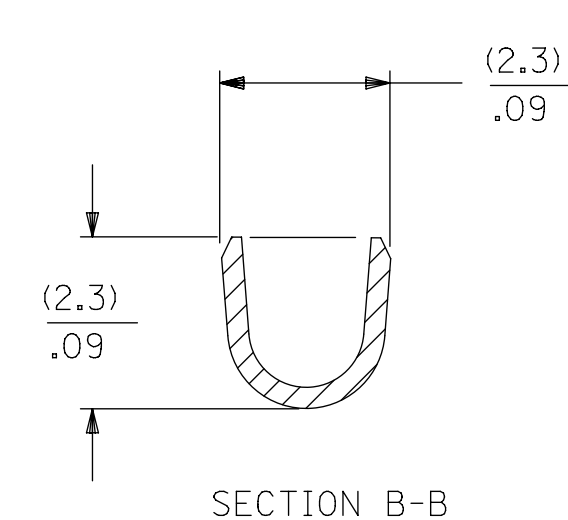
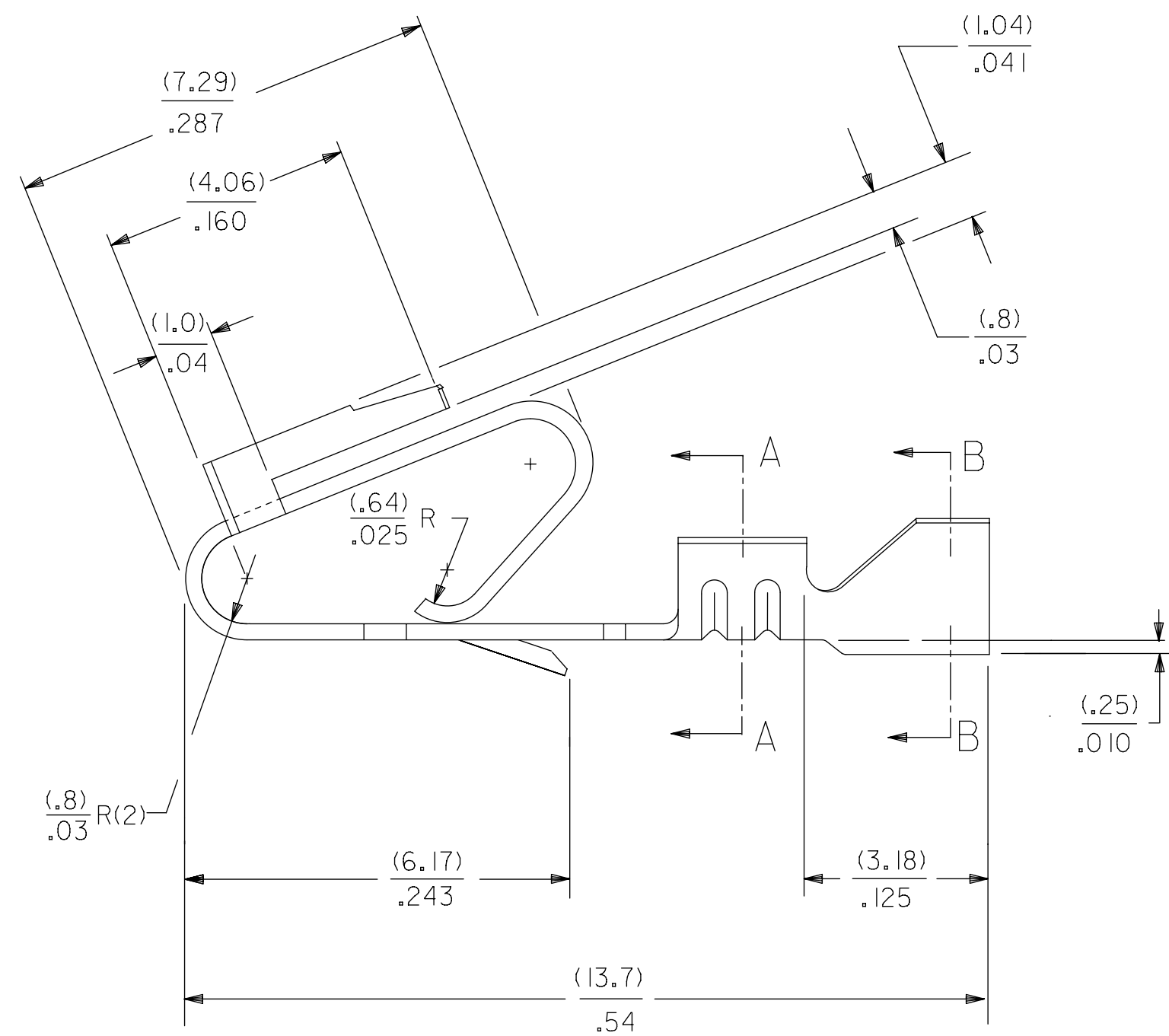
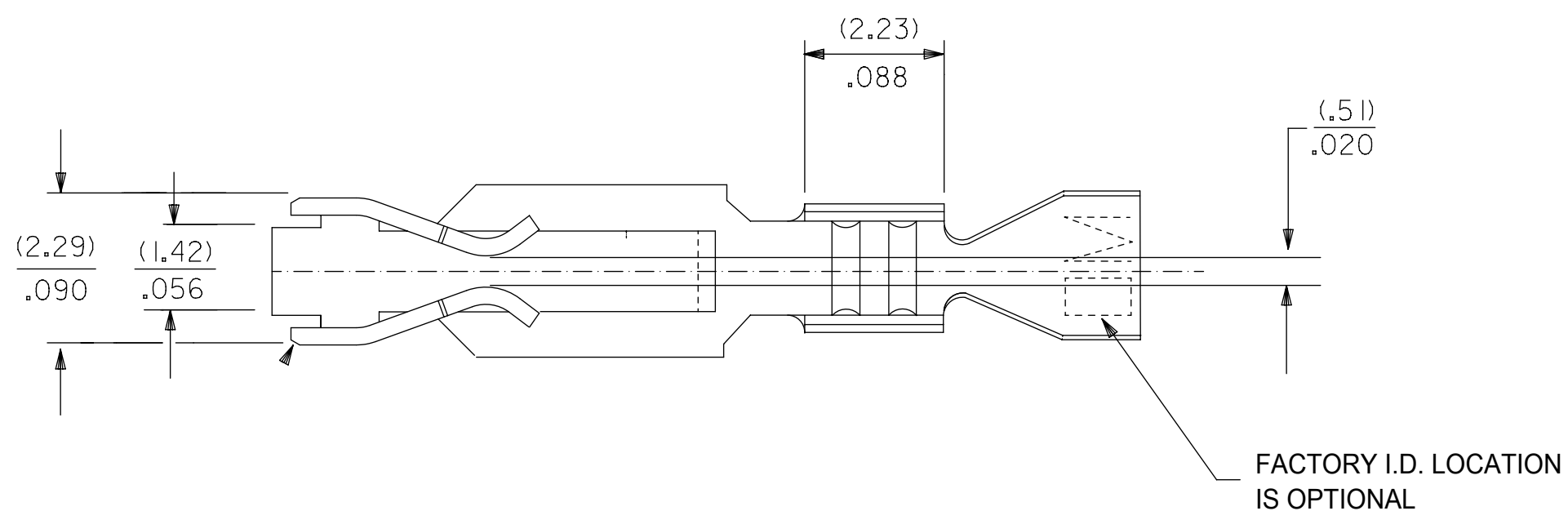
无铅	不适用
----	-----

施工工具

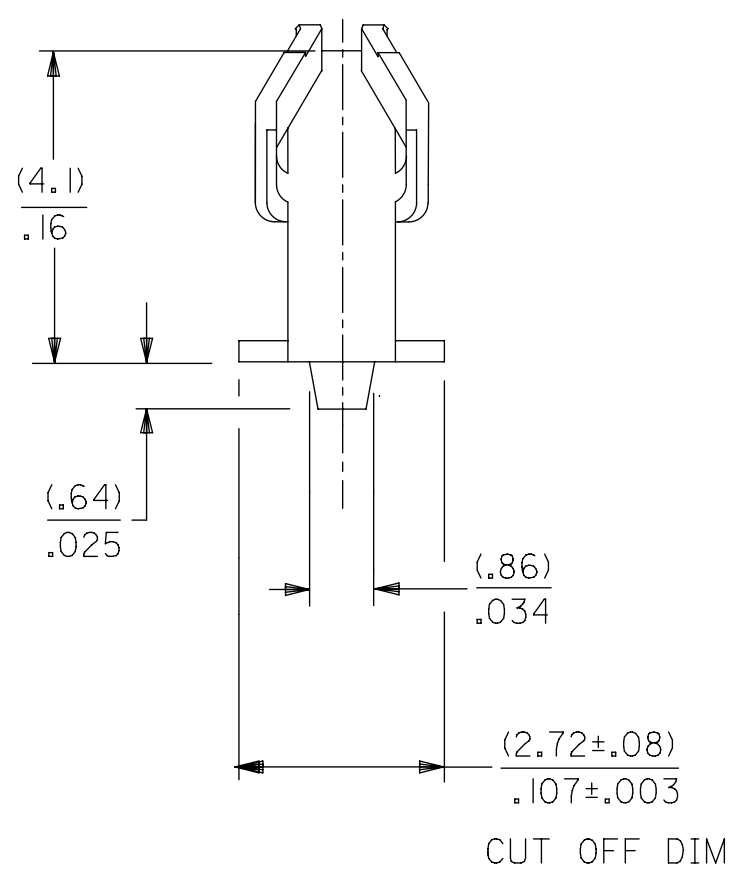
全局

描述	产品编号
Extraction Tool for Flat Blade, 3.96mm KK, 2.00mm, 3.96mm EdgeMate, and Ultra-Fit Terminals	<u>0011030016</u>
Terminator Die	<u>0011402097</u>
Terminator Die	<u>0011402099</u>
PremiumGrade Hand Crimp Tool for KK 3.96mm Terminals, 22-26 AWG	<u>0638117400</u>
Mini-Mac Applicator	<u>0638881000</u>

- NOTES:
1. MATERIAL: SEE LEGEND
 2. FINISH: SEE LEGEND
 3. PRODUCT SPECIFICATION: PS-40-02
PACKAGING SPECIFICATION: CHAIN FORM: SEE PK-2759-002
LOOSE FORM: SEE PK-2759-001
 4. DIMENSIONS GIVEN ACROSS CENTERLINES ARE SYMMETRICAL ABOUT THOSE CENTERLINES WITHIN HALF THE TOTAL TOLERANCE
 5. CRIMP FOR 22 TO 26 GA. WIRE WITH MAX. INSULATION DIA. OF (1.65)/.065
 6. THIS PRODUCT CONFORMS TO CLASS B REQUIREMENTS OF COSMETIC SPECIFICATION PS-45499-002



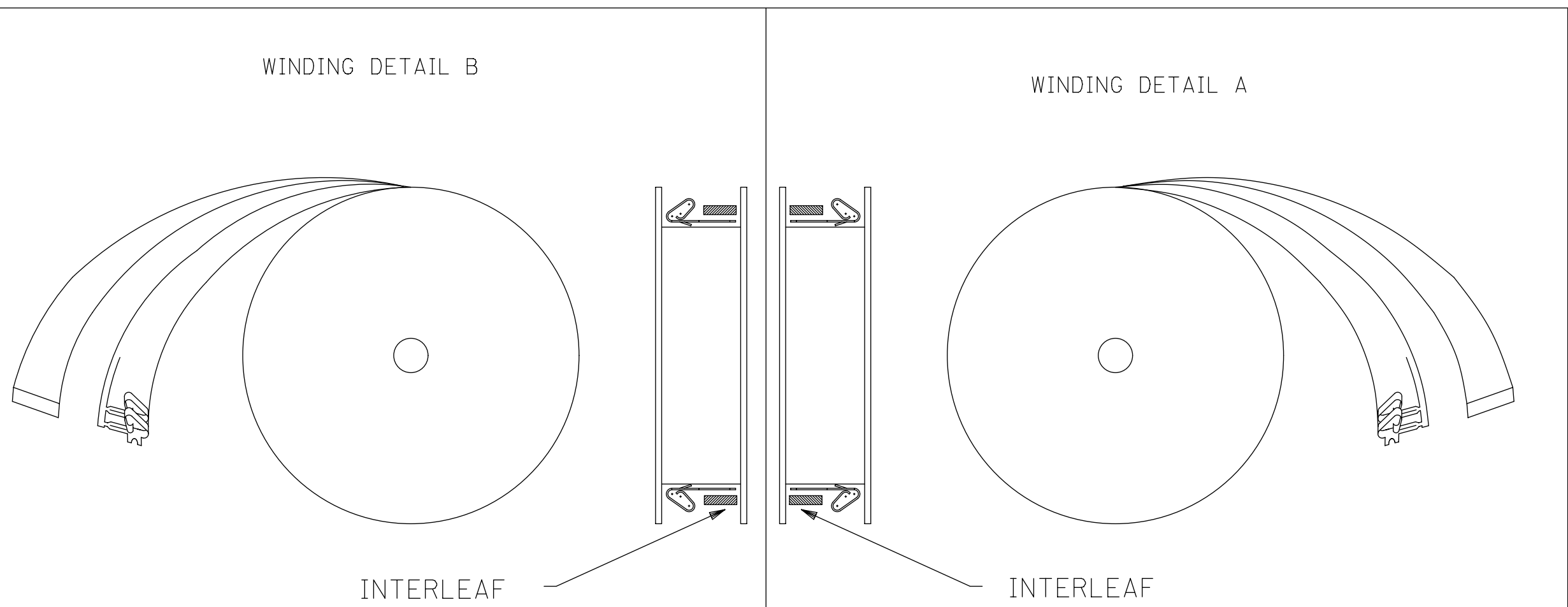
SELECTIVE PLATING AREA



7258-*(*)*
 MAT'L: (.27) .0106 THK
 BLANK=BRASS
 A=PHOS. BRONZE
 FORM
 BLANK= CHAIN PER DETAIL B
 A=CHAIN PER DETAIL A
 L= LOOSE

PLATING PER SDES- 88

- (909) - HOT TIN DIP: (0.00254)/.000100 MIN.
- (558) - SELECT GOLD: (0.00076)/.000030 MIN.
OVERALL GOLD FLASH: (0.00005)/.000002 MIN.
OVERALL NICKEL UNDERPLATE: (0.00127)/.000050 MIN.
- (561) - SELECT GOLD: (0.00076)/.000030 MIN.
OVERALL NICKEL UNDERPLATE: (0.00127)/.000050 MIN.
- (555) - SELECT GOLD: (0.00038)/.000015 MIN.
OVERALL NICKEL UNDERPLATE: (0.00076)/.000030 MIN.



SYMBOLS	THIS DRAWING CONTAINS INFORMATION THAT IS PROPRIETARY TO MOLEX ELECTRONIC TECHNOLOGIES, LLC AND SHOULD NOT BE USED WITHOUT WRITTEN PERMISSION			
	DIMENSION UNITS	SCALE	CURRENT REV DESC: NOTE 3 UPDATED	
	= 0	MM 1:1		
= 0	GENERAL TOLERANCES (UNLESS SPECIFIED)			EC NO: 605479 DRWN: SS06 2018/09/12 CHK'D: ISHWARG 2018/10/05 APPR: ISHWARG 2018/10/05 INITIAL REVISION: DRWN: JJS 1987/12/07 APPR: LENZ 1987/12/07
= 0		MM	INCH	
= 0	4 PLACES	±	±	
= 0	3 PLACES	±	± 0.01	
= 0	2 PLACES	± 0.25	± 0.014	
= 0	1 PLACE	± 0.36	±	
= 0	0 PLACES	±	±	
= 0	ANGULAR TOL ± 0.5°			
= 0	DRAFT WHERE APPLICABLE MUST REMAIN WITHIN DIMENSIONS			THIRD ANGLE PROJECTION
= 0			DRAWING D-SIZE	SERIES 7258
DOCUMENT STATUS P1		RELEASE DATE 2018/10/05	09:56:26	

molex

TRIFURCON TERMINAL
CRIMP TYPE, .156 CENTERS 22 TO 26 AWG

PRODUCT CUSTOMER DRAWING

DOCUMENT NUMBER SD-7258 DOC TYPE PSD DOC PART 001 REVISION U1

MATERIAL NUMBER SEE CHART CUSTOMER GENERAL MARKET SHEET NUMBER 1 OF 2

7258-(*)*			7258-A(*)*														
PART NO.	ENG. NO		PART NO.	ENG. NO		PART NO.	ENG. NO		PART NO.	ENG. NO(SUFFIX ONLY)		PART NO.	ENG. NO(SUFFIX ONLY)	VOID CKT.	PART NO.	ENG. NO(SUFFIX ONLY)	VOID CKT.
08-50-0183	7258-(P909)		08-04-0001	7258-A(999)													
08-50-0185	7258-(P909)L		08-65-0121	* 7258-A(P56 I)	ES-276-P56 I												
08-50-0283	7258-(P909)A		08-65-0122	* 7258-A(P56 I)L													
			08-56-0123	* 7258-A(P558)	MAKE FROM												
			08-56-0124	* 7258-A(P558)L	7258-A(P56 I)												
				7258-A(56 I)													
				7258-A(56 I)L													
			08-52-0124	* 7258-A(P909)													
			08-52-0125	* 7258-A(P909)L													
			08-65-0126	7258-A(P555)	ES-276-P555												
			08-65-0127	7258-A(P555)L													

SYMBOLS												THIS DRAWING CONTAINS INFORMATION THAT IS PROPRIETARY TO MOLEX ELECTRONIC TECHNOLOGIES, LLC AND SHOULD NOT BE USED WITHOUT WRITTEN PERMISSION											
= 0				MM				SCALE				1:1				CURRENT REV DESC: NOTE 3 UPDATED							
= 0				GENERAL TOLERANCES (UNLESS SPECIFIED)								EC NO: 605479				DRWN: SS06 2018/09/12							
= 0				4 PLACES ±		±		MM		INCH		2018/10/05				TRIFURCON TERMINAL							
= 0				3 PLACES ±		± 0.01						2018/10/05				CRIMP TYPE, .156 CENTERS 22 TO 26 AWG							
= 0				2 PLACES ±		0.25 ±		0.014				2018/10/05				PRODUCT CUSTOMER DRAWING							
= 0				1 PLACE ±		0.36 ±						INITIAL REVISION:				DOCUMENT NUMBER							
= 0				0 PLACES ±		±						DRWN: JJS 1987/12/07				SD-7258							
= 0				ANGULAR TOL ±		0.5 °						APPR: LENZ 1987/12/07				PSD		001		U1			
= 0				DRAFT WHERE APPLICABLE MUST REMAIN WITHIN DIMENSIONS				THIRD ANGLE PROJECTION				DRAWING		SERIES		MATERIAL NUMBER		CUSTOMER		SHEET NUMBER			
= 0								D-SIZE				7258		SEE CHART		GENERAL MARKET		2 OF 2					