



产品编号 : 08550101

系列号 : 2759

Product Category : Crimp Terminals

Packaging Alternative : 08550102 (Bag)

Product Description : KK 254 Crimp Terminal, 22-30 AWG, Reel, Selective Gold (Au), Nickel (Ni) Under Plating

状态 : Active

工程编号 : 2759-(555)B

文件和资源

图纸

图纸 008550101_sd.pdf

包装设计图 PK-2759-002-001.pdf

规格


产品规格 PS-10-07-001.pdf

产品规格 50510002-PS-000.pdf

测试摘要 TS-10-07-001.pdf

产物环境合规

合规

GADSL/IMDS	Not Relevant
China RoHS	
EU ELV	Compliant per 2000/53/EC
Low-Halogen Status	Low-Halogen per IEC 61249-2-21
REACH SVHC	Not Contained per D(2023)8585-DC (23 Jan 2024)
EU RoHS	Compliant per EU 2015/863

多部分产品合规性声明

- Eu RoHS
- REACH SVHC
- Low-Halogen
- IPC 1752A Class C
- IPC 1752A Class D
- Molex Product Compliance Declaration
- IEC-62474
- chemSHERPA (xml)

产品详情

常规

状态	活动
类别	Crimp Terminals
系列	2759
说明	KK 254 Crimp Terminal, 22-30 AWG, Reel, Selective Gold (Au), Nickel (Ni) Under Plating
应用	Signal, Wire-to-Board
产品系列	KK Interconnect Systems
产品名称	KK 254
UPC	800753749900

物理

性别	女
材料 - 金属	Brass
材料 - 接合部位电镀	金牌
材料 - 终端电镀	Nickel
净重	0.064/g
包装形式	Reel
最薄镀层 - 接合部位	0.381µm
最薄镀层 - 端接	0.762µm
终端界面类型	Crimp or Compression
导线绝缘直径	1.57mm max.
线径规格 (AWG)	22, 24, 26, 28, 30
线缆尺寸mm ²	不适用

进程

无铅	不适用
----	-----

可连接使用部件

描述	产品编号
----	------

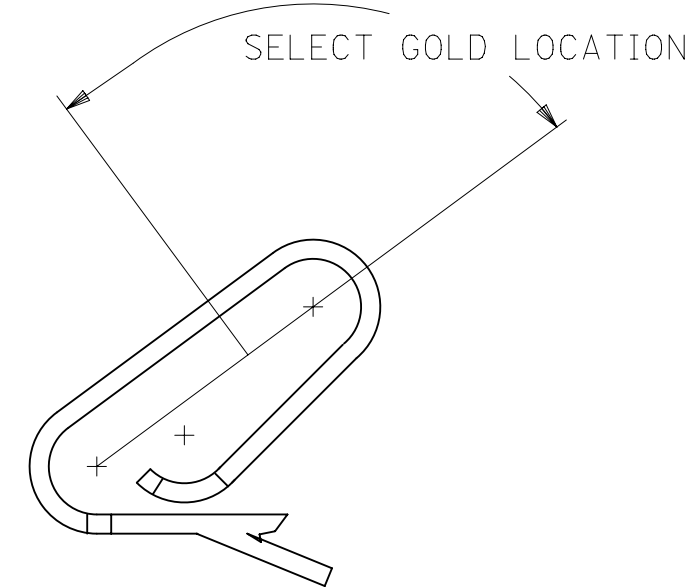
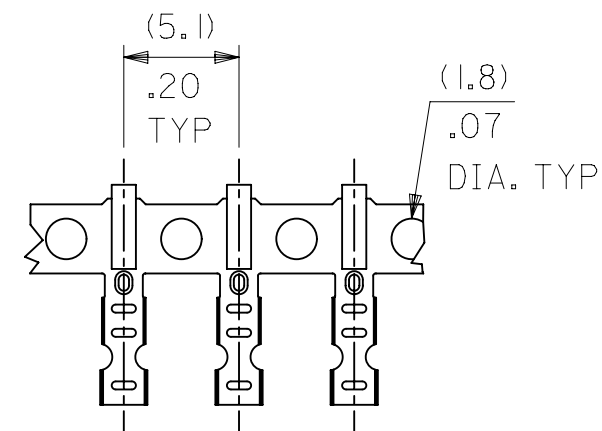
KK 254 Single Row Crimp Housings	<u>2695</u>
KK 2.50mm Pitch Single Row Receptacle Housings	<u>5051</u>

施工工具

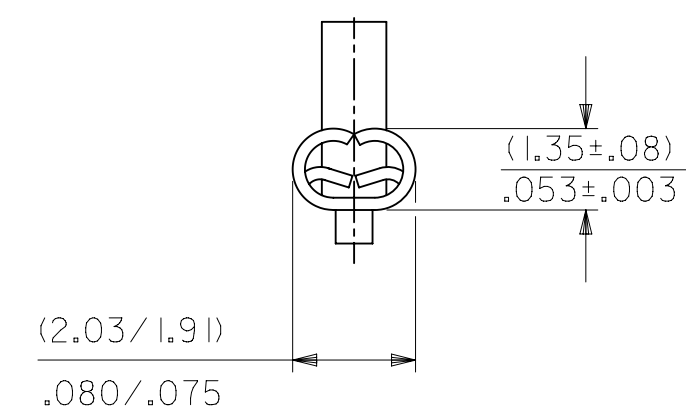
全局

描述	产品编号
Extraction Tool for KK 2.54mm Terminals, 22-30 AWG	<u>11030022</u>
Terminator Die	<u>11402265</u>
Insertion Tool for KK 2.54mm Terminals, 22-30 AWG	<u>638120000</u>
Mini-Mac Applicator for KK and Cat Ear Terminals for 22-30 AWG Wire with Insulation Diameter 1.09-1.57mm and 22-28 AWG Wire with Insulation Diameter 1.20-1.70mm	<u>638882000</u>
Mini-Mac Applicator for KK and Cat Ear Terminals for 22-30 AWG Wire with Insulation Diameter 0.96-1.20mm	<u>638882100</u>

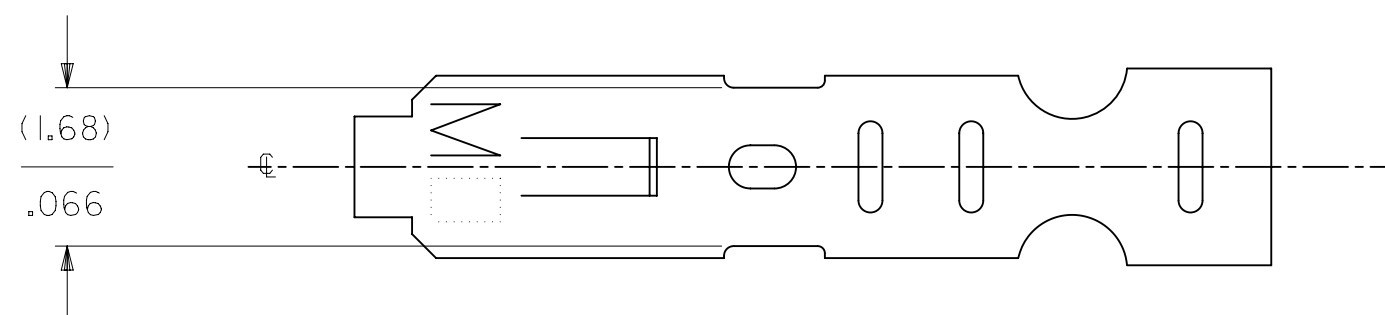
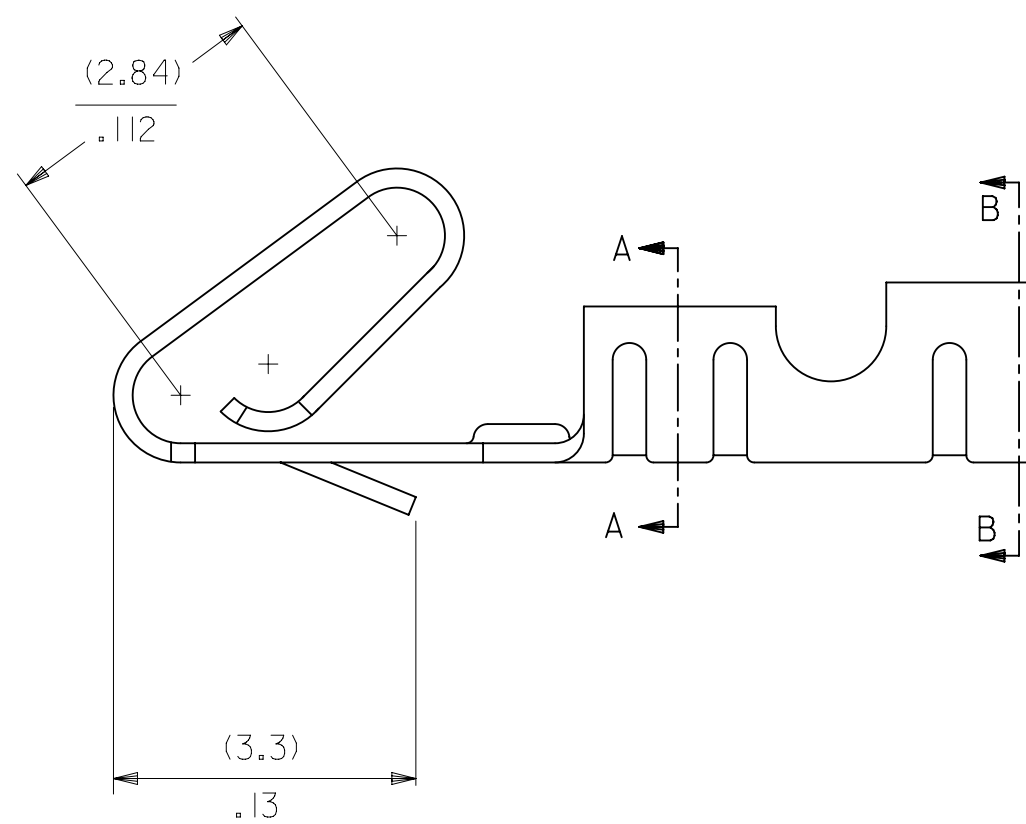
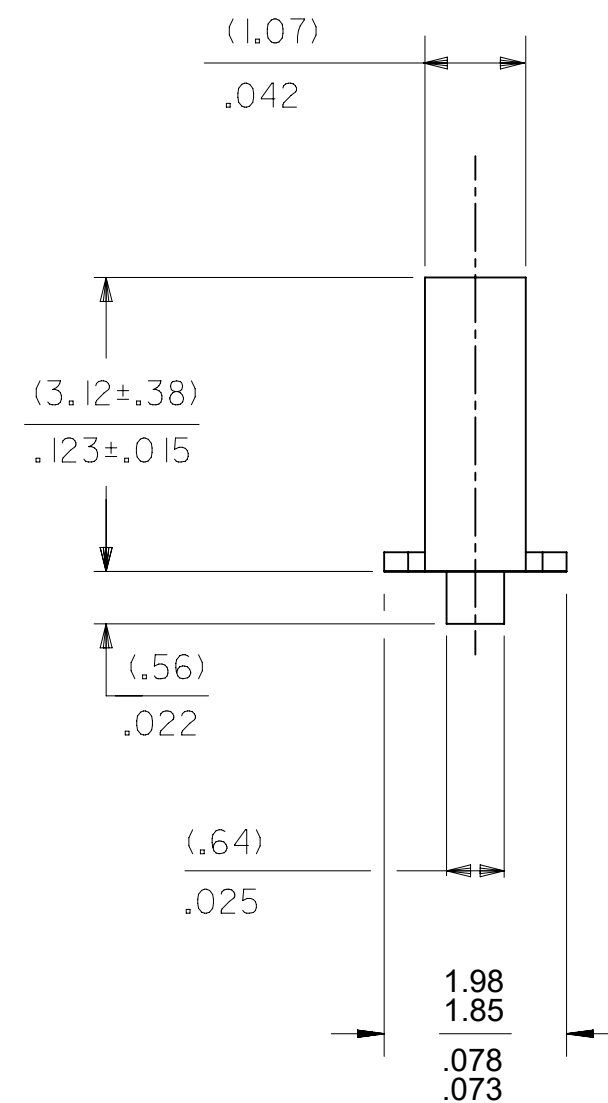
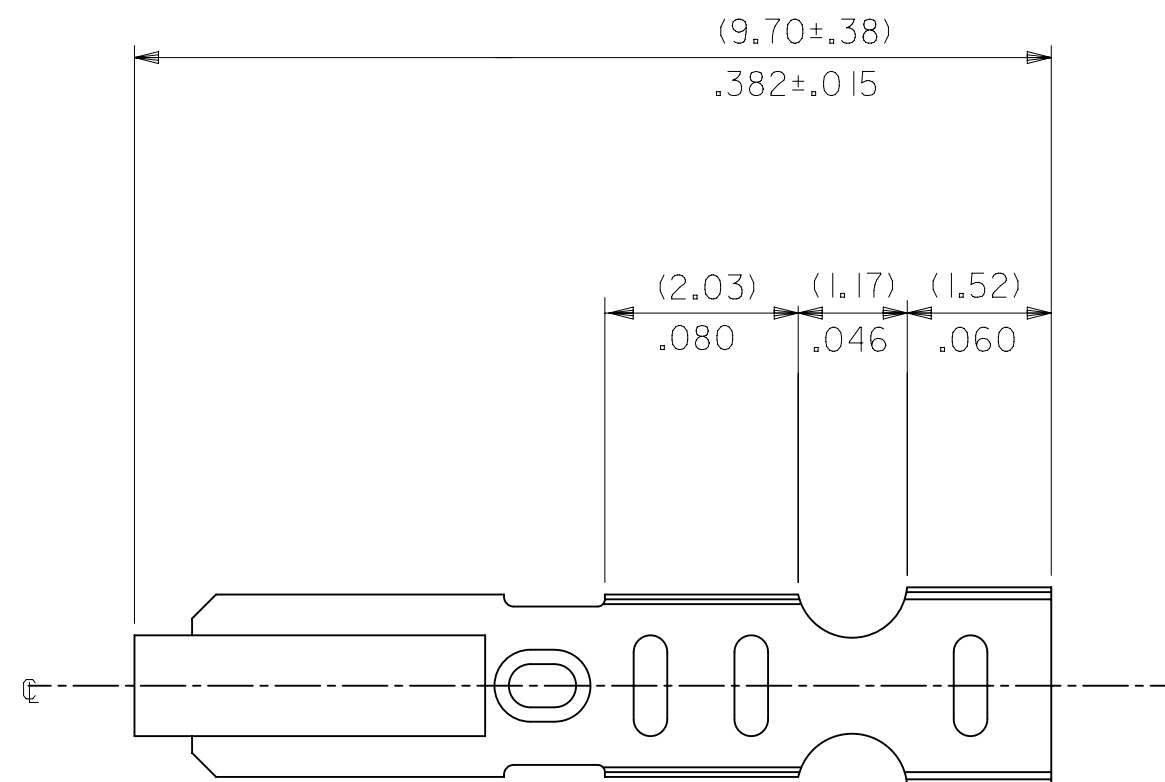
CARRIER VIEW



CRIMP DETAIL

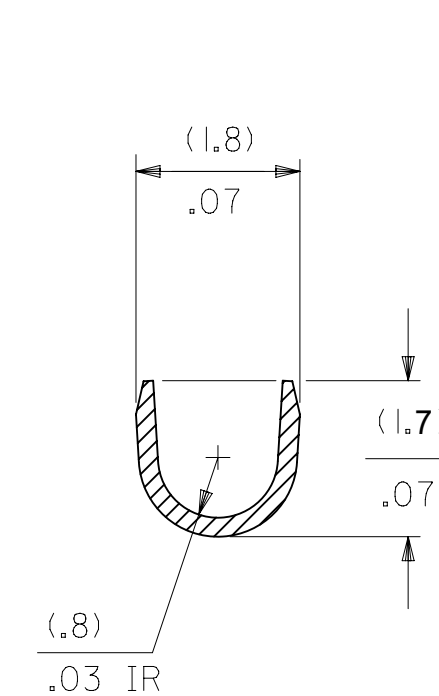


CRIMPED TERMINAL 2759-(P909)C IS USED WITHOUT WIRE AND IS INSERTED INTO HOUSING TO PROVIDE TENSION WHEN ASSEMBLED TO HEADERS DURING SHIPMENT.

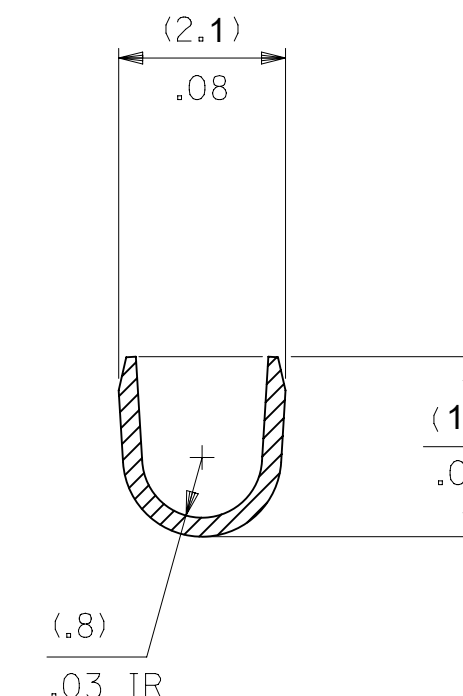


NOTES:

- MATERIAL:
(0.20)/.008 THICK BRASS
- FINISH:
122 - OVERALL TIN: (0.00381)/.000150 MIN. TIN OVER
(0.00076)/.000030 MIN NICKEL
154 - OVERALL TIN: (0.00254)/.000100 MIN. TIN OVER
(0.00127)/.000050 MIN NICKEL
P909 - OVERALL HOT TIN DIP: (0.00254)/.000100 MIN.
550 - SELECT GOLD: (0.00038)/.000015 MIN.
OVERALL GOLD FLASH: (0.00005)/.000002 MIN.
OVERALL NICKEL UNDERPLATE: (0.00076)/.000030 MIN.
555- SELECT GOLD (0.00038)/.000015 MIN.
OVERALL NICKEL UNDERPLATE: (0.00076)/.000030
558 - SELECT GOLD: (0.00076)/.000030 MIN.
OVERALL GOLD FLASH: (0.00005)/.000002 MIN.
OVERALL NICKEL UNDERPLATE: (0.00127)/.000050 MIN.
- PRODUCT SPEC: PS-10-07
- PACKAGING SPECIFICATION: LOOSE TERMINALS: PER PK-2759-001
CHAIN FORM TERMINALS: PER PK-2759-002
- CRIMP IS FOR 22-30 GA WIRE WITH (1.57)/.062 DIA INSULATION MAX.
- INSERTION FORCE OF TERMINAL INTO (2.54)/.100 CENTERLINE CONNECTOR IS 2.5 LBS. MAX
- TERMINAL RETENTION IN HOUSING IS 26.7N / 6LBS MIN. WHEN PULLED AT THE RATE OF (25.4MM) / 1 INCH PER MINUTE.
- DIMENSIONS GIVEN ACROSS CENTERLINES ARE SYMMETRICAL ABOUT THOSE CENTERLINES WITHIN HALF THE TOTAL TOLERANCE.
- THIS PART CONFORMS TO CLASS B REQUIREMENTS OF COSMETIC SPECIFICATION PS-45499-002.



SECTION A-A
BACKGROUND OMITTED



SECTION B-B
BACKGROUND OMITTED

2759-(***)*

FORM

L=LOOSE

C=LOOSE CRIMPED

A=CHAIN, PER WINDING DETAIL "A"

B=CHAIN, PER WINDING DETAIL "B"

PLATING

SEE NOTE 2

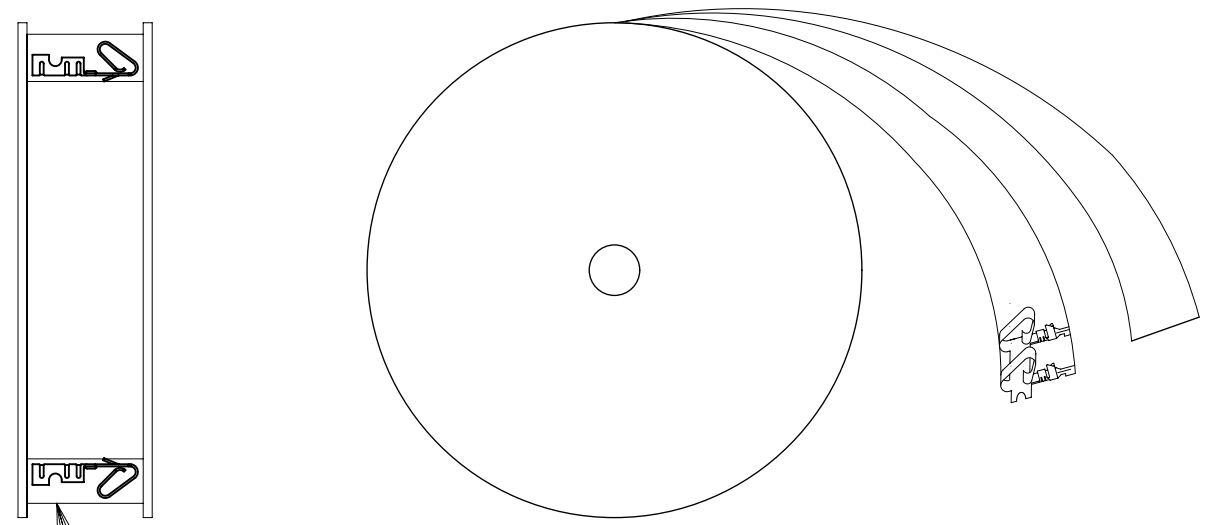
THIS DRAWING CONTAINS INFORMATION THAT IS PROPRIETARY TO MOLEX ELECTRONIC TECHNOLOGIES, LLC AND SHOULD NOT BE USED WITHOUT WRITTEN PERMISSION

DIMENSION UNITS MM/IN	SCALE 1:1	CURRENT REV DESC: OBSOLETE PART NUMBER AS PER PCN#509451	molex			
GENERAL TOLERANCES (UNLESS SPECIFIED)		EC NO: 686785				
4 PLACES ±	±	DRWN: SUGEEB	PRODUCT CUSTOMER DRAWING			
3 PLACES ±	± 0.01	CHK'D: GGA	DOCUMENT NUMBER			
2 PLACES ±	0.25 ± 0.014	APPR: GGA	SD-2759			
1 PLACE ±	0.36 ±	INITIAL REVISION:	DOC TYPE	DOC PART	REVISION	
0 PLACES ±	±	DRWN: SAMIEC	PSD	001	AW3	
ANGULAR TOL ±	0.5 °	APPR: FSMITH	SHEET NUMBER			
DRAFT WHERE APPLICABLE MUST REMAIN WITHIN DIMENSIONS	THIRD ANGLE PROJECTION	DRAWING D-SIZE	SERIES 2759	MATERIAL NUMBER SEE TABLE	CUSTOMER GENERAL MARKET	

2759-(***)*

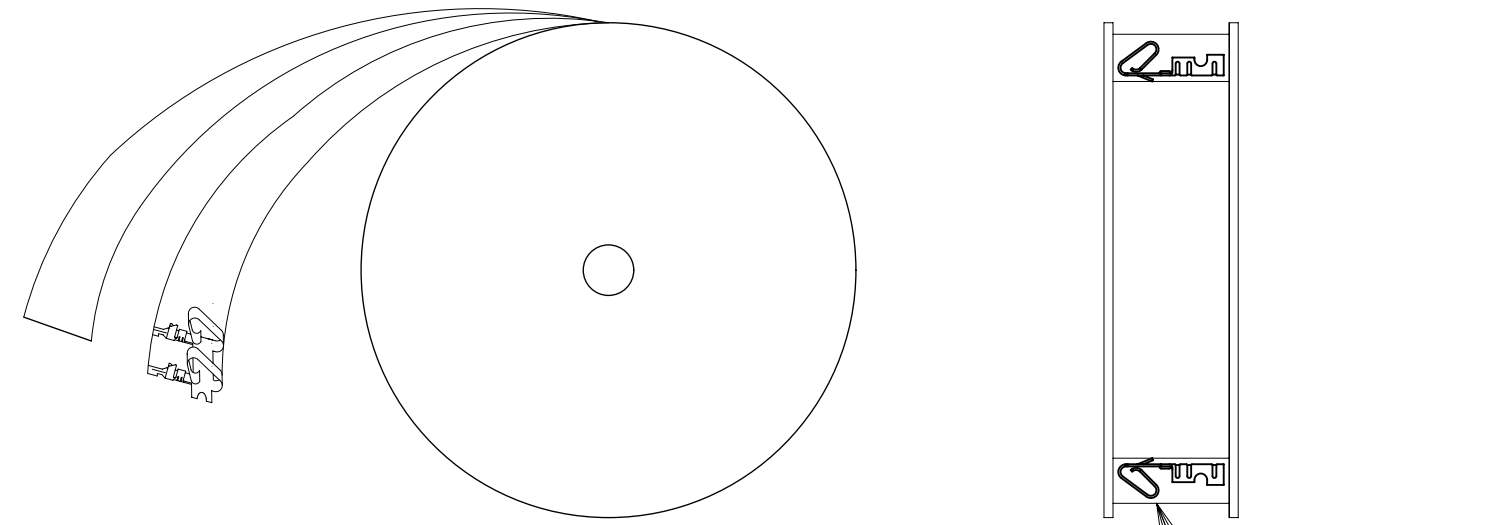
	PART NO.	ENG. NO.
	08-55-0101	2759-(555)B
	08-55-0102	2759-(555)L
	08-55-0126	2759-(555)A
	08-56-0109	2759-(550)B
	08-56-0110	2759-(550)L
	08-50-0113	2759-(P909)B
	08-51-0108	2759-(122)B
		2759-(122)L
	08-50-0274	2759-(P909)B
	08-55-0130	2759-(558)B
	08-55-0131	2759-(558)L
	08-50-0160	2759-(154)L
	08-50-0159	2759-(154)B

WINDING DETAIL "A"



PAPER INTERLEAF

WINDING DETAIL "B"



PAPER INTERLEAF

THIS DRAWING CONTAINS INFORMATION THAT IS PROPRIETARY TO MOLEX ELECTRONIC TECHNOLOGIES, LLC AND SHOULD NOT BE USED WITHOUT WRITTEN PERMISSION

DIMENSION UNITS: MM/IN SCALE: 1:1

GENERAL TOLERANCES (UNLESS SPECIFIED)

	MM	INCH
4 PLACES ±	±	±
3 PLACES ±	± 0.01	±
2 PLACES ±	± 0.25 ± 0.014	±
1 PLACE ±	± 0.36 ±	±
0 PLACES ±	±	±
ANGULAR TOL ±	± 0.5°	±

CURRENT REV DESC: OBSOLETE PART NUMBER AS PER PCN#509451

EC NO: 686785
 DRWN: SUGEEB 2021/08/31
 CHK'D: GGA 2022/02/28
 APPR: GGA 2022/02/28

INITIAL REVISION:
 DRWN: SAMIEC 1987/07/28
 APPR: FSMITH 2012/03/20



CRIMP TERMINAL
 22-30 GA WIRE

PRODUCT CUSTOMER DRAWING

DOCUMENT NUMBER	DOC TYPE	DOC PART	REVISION
SD-2759	PSD	001	AW3

DRAFT WHERE APPLICABLE MUST REMAIN WITHIN DIMENSIONS	THIRD ANGLE PROJECTION	DRAWING	SERIES	MATERIAL NUMBER	CUSTOMER	SHEET NUMBER
		D-SIZE	2759	SEE TABLE	GENERAL MARKET	2 OF 2