



产品编号 : 08650804

系列号 : 41572

Product Category : Crimp Terminals

Packaging Alternative : 08650805 (Bag)

Product Description : KK 254 Cat Ear Crimp Terminal 41572, Reel Tin (Sn)

状态 : Active

工程编号 : 41572-A (P909)

---

## 文件和资源

### 图纸


图纸 008650804\_sd.pdf

包装设计图 PK-2759-002-001.pdf

---

## 产物环境合规

### 合规

GADSL/IMDS	Compliant with Exemption 44
China RoHS	
EU ELV	Not Relevant
Low-Halogen Status	Low-Halogen per IEC 61249-2-21
REACH SVHC	Not Contained per D(2023)8585-DC (23 Jan 2024)
EU RoHS	Compliant per EU 2015/863

### 多部分产品合规性声明

- Eu RoHS
- REACH SVHC
- Low-Halogen
  
- IPC 1752A Class C
- IPC 1752A Class D
- Molex Product Compliance Declaration
- IEC-62474
- chemSHERPA (xml)

### 欧盟 RoHS 合格证书

---

## 产品详情

### 常规

状态	活动
类别	Crimp Terminals
系列	41572
说明	KK 254 Cat Ear Crimp Terminal 41572, Reel Tin (Sn)
应用	Signal, Wire-to-Board
产品系列	KK Interconnect Systems
产品名称	Cat Ear, KK 254
UPC	800753641143

## 物理

性别	女
材料 - 金属	Phosphor Bronze
材料 - 接合部位电镀	Tin
材料 - 终端电镀	Tin
净重	75.000/mg
包装形式	Reel
最薄镀层 - 接合部位	2.540µm
最薄镀层 - 端接	2.540µm
终端界面类型	Crimp or Compression
导线绝缘直径	1.57mm max.
线径规格 (AWG)	22, 24, 26, 28, 30
线缆尺寸mm <sup>2</sup>	不适用

## 进程

无铅	不适用
----	-----

---

## 施工工具

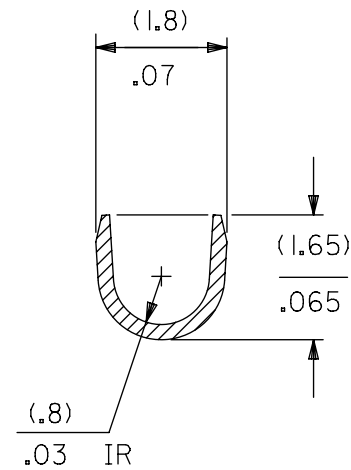
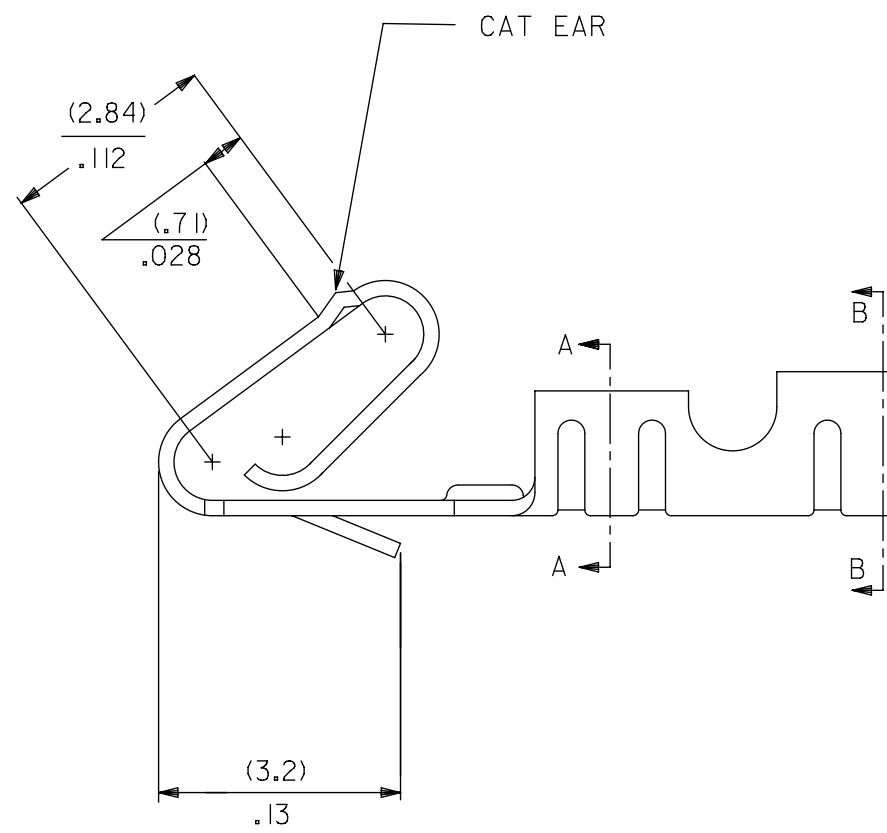
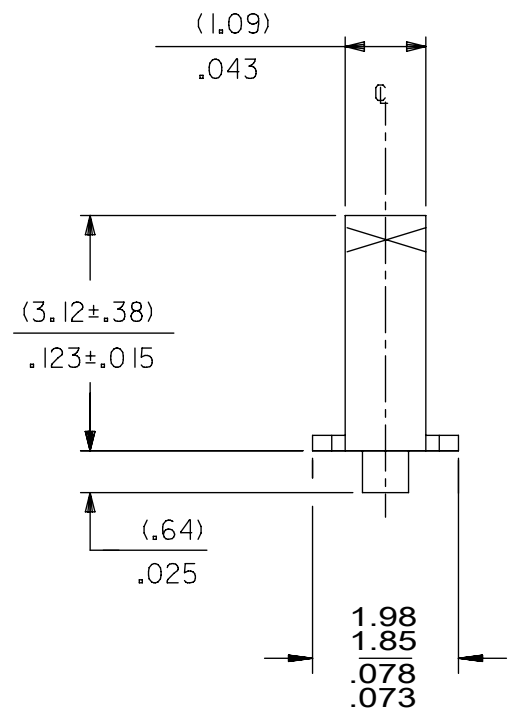
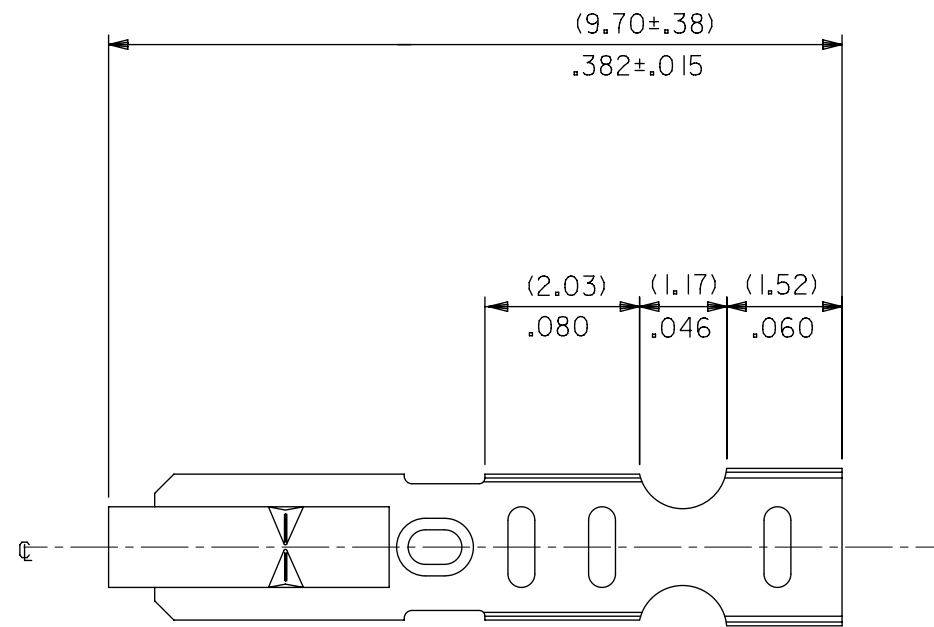
### 全局

描述	产品编号
Extraction Tool for KK 2.54mm Terminals, 22-30 AWG	<u>11030022</u>
Terminator Die	<u>11402265</u>
Insertion Tool for KK 2.54mm Terminals, 22-30 AWG	<u>638120000</u>

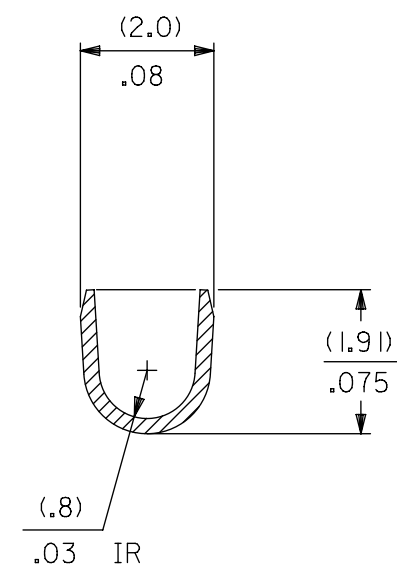
Mini-Mac Applicator for KK and Cat Ear Terminals for 22-30 AWG Wire with Insulation Diameter 1.09-1.57mm and 22-28 AWG Wire with Insulation Diameter 1.20-1.70mm	<u>638882000</u>
Mini-Mac Applicator for KK and Cat Ear Terminals for 22-30 AWG Wire with Insulation Diameter 0.96-1.20mm	<u>638882100</u>

NOTES:

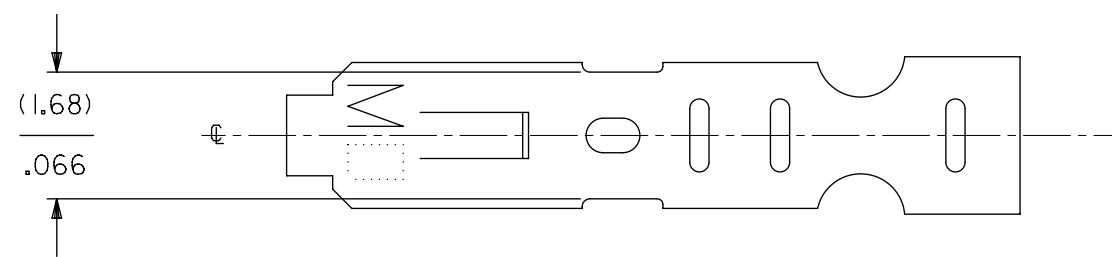
1. MATERIAL: PHOS BRONZE
2. FINISH: SEE LEGEND
3. PRODUCT SPECIFICATION: PS-10-07
4. PACKAGING: LOOSE TERMINALS: PER PK-2759-001  
CHAIN FORM TERMINALS: PER PK-2759-002
5. INSERTION FORCE OF TERMINAL INTO (2.54)/.100 CL HOUSING IS 11.1 N / 2.5 LBS MAX.
6. TERMINAL RETENTION IN HOUSING IS 26.7N / 6LBS MIN. WHEN PULLED AT THE RATE OF 25.4MM / 1 INCH PER MINUTE.
7. DIMENSIONS GIVEN ACROSS CENTERLINES ARE SYMMETRICAL ABOUT THOSE CENTERLINES WITHIN HALF THE TOTAL TOLERANCE.
8. CRIMP IS FOR 22-30 GA WIRE WITH (1.57)/.062 DIA. INSULATION MAX.
9. THIS PART CONFORMS TO CLASS B REQUIREMENTS OF COSMETIC SPECIFICATION PS-45499-002



SECTION A-A  
BACKGROUND OMITTED



SECTION B-B  
BACKGROUND OMITTED

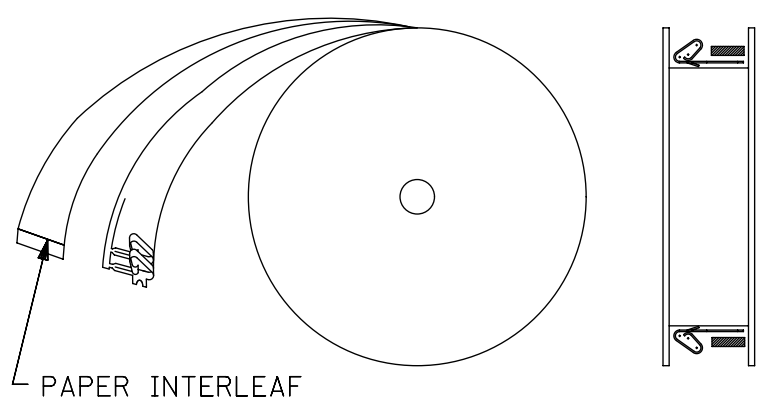


41572-\*(\*\*\*)\*  
 MATERIAL: A= SEE NOTE 1  
 FORM: L=LOOSE, BLANK=CHAIN PER DETAIL B  
 PLATING

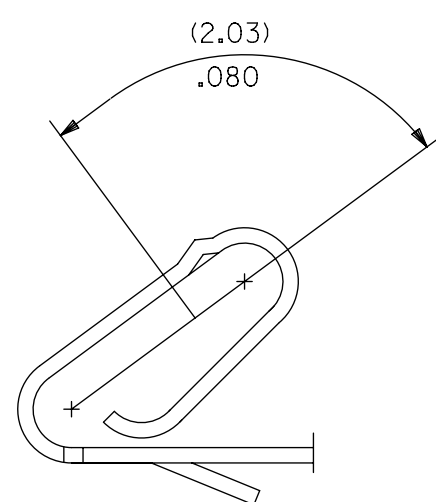
(P909) OVERALL HOT TIN DIP: (0.00254)/.000100 MIN.  
 (154) OVERALL TIN: (0.00254)/.000100 MIN. OVER  
 (0.00127)/.000050 MIN. NICKEL

PART NO.	ENG NO.
08-65-0804	41572-A(P909)
08-65-0805	41572-A(P909)L
41572-0002	41572-A(154)

WINDING DETAIL B  
NOT TO SCALE



SELECT GOLD LOCATION



SYMBOLS		THIS DRAWING CONTAINS INFORMATION THAT IS PROPRIETARY TO MOLEX ELECTRONIC TECHNOLOGIES, LLC AND SHOULD NOT BE USED WITHOUT WRITTEN PERMISSION		CURRENT REV DESC: NOTE 4 UPDATED	
DIMENSION UNITS	SCALE	MM	INCH	MM	INCH
MM/IN	1:1				
GENERAL TOLERANCES (UNLESS SPECIFIED)					
4 PLACES	±				
3 PLACES	±		± 0.01		
2 PLACES	±	0.25	± 0.015		
1 PLACE	±	0.38	±		
0 PLACES	±				
ANGULAR TOL	± 0.5°				
DRAFT WHERE APPLICABLE MUST REMAIN WITHIN DIMENSIONS		THIRD ANGLE PROJECTION		DRAWING SERIES	
		C-SIZE		41572	

EC NO: 605479	2018/09/11
DRWN: SS06	2018/10/05
CHK'D: ISHWARG	2018/10/05
APPR: ISHWARG	2018/10/05
INITIAL REVISION: 1993/03/19	
DRWN: SAMIEC	1993/03/19
APPR:	

DOCUMENT NUMBER	DOC TYPE	DOC PART	REVISION
SD-41572	PSD	001	G2
MATERIAL NUMBER	CUSTOMER	SHEET NUMBER	
SEE CHART	GENERAL MARKET	1 OF 1	