



产品编号 : 09930700

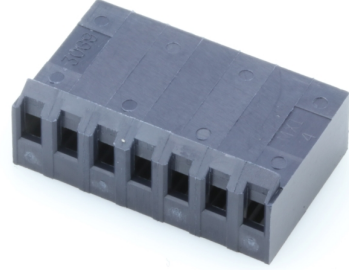
Product Description : KK 3.96mm Crimp Housing, Friction Ramp, 7 Circuits, Glow-Wire Capable

系列号 : 3069

状态 : Active

Product Category : Connector Housings

工程编号 : 3069-G07



文件和资源

图纸

[图纸 009930700_sd.pdf](#)

3D 模型和设计文件

[3D模型 009930700_stp.zip](#)


规格

[包装规格 PK-3069-001-001.pdf](#)

[产品规格 PS-99020-0087-001.pdf](#)

产物环境合规

合规

| | |
|--------------------|---|
| GADSL/IMDS | Not Relevant |
| China RoHS |  |
| EU ELV | Not Relevant |
| Low-Halogen Status | Low-Halogen per IEC 61249-2-21 |
| REACH SVHC | Not Contained per D(2023)3788-DC (14 Jun 2023) |
| EU RoHS | Compliant per EU 2015/863 |

多部分产品合规性声明

- Eu RoHS
- REACH SVHC
- Low-Halogen

多部分行业合规性文件

- IPC 1752A Class C
- IPC 1752A Class D
- Molex Product Compliance Declaration
- IEC-62474
- chemSHERPA (xml)

欧盟 RoHS 合格证书

产品详情

常规

| | |
|------|--|
| 状态 | 活动 |
| 类别 | Connector Housings |
| 系列 | 3069 |
| 说明 | KK 3.96mm Crimp Housing, Friction Ramp, 7 Circuits, Glow-Wire Capable |
| 应用 | Power, Wire-to-Board |
| 个评论 | <p>This Molex product is manufactured from material that has the following ratings, tested by independent agencies: a) A Glow Wire Ignition Temperature (GWIT) of at least 775 deg C per IEC 60695-2-13. b) A Glow Wire Flammability Index (GWFI) above 850 deg C per IEC 60695-2-12 and hence complies with the requirements set out in the International Standard IEC 60335-1 5th edition - household and similar electrical appliances - safety, section 30 Resistance to heat and fire. The customers using this product must determine its suitability for use in their particular application through testing or other acceptable means as described in end-product glow-wire flammability test standard IEC 60695-2-11 and any applicable product end-use standard(s). If it is determined during the customer's evaluation of suitability, that higher performance is required, please contact Molex for possible product options.</p> |
| 产品系列 | KK Interconnect Systems |
| 产品名称 | KK 396 |

| | |
|-----|--------------|
| UPC | 883906174231 |
|-----|--------------|

机构

| | |
|----|--------|
| UL | E29179 |
|----|--------|

物理

| | |
|-----------|---------------------------|
| 电路详图 | 7 |
| 电路数（最多） | 7 |
| 颜色-树脂 | 黑色 |
| 阻燃性 | 94V-2 |
| 性别 | Receptacle |
| 符合灼热丝规范 | 是 |
| 锁定插接部位 | 是 |
| 材料 - 树脂 | Nylon |
| 净重 | 1.767/g |
| 行数 | 1 |
| 包装形式 | Bag |
| 面板安装式 | 否 |
| 间距 - 插配接口 | 3.96mm |
| 运行温度范围 | See Product Specification |

可配插/可连接使用的产品

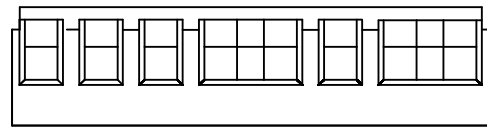
可配插部件

| 描述 | 产品编号 |
|--|--------------|
| KK 396 Single Row Vertical Headers | <u>3190</u> |
| KK 396 Single Row Vertical Headers | <u>3192</u> |
| KK 396 Vertical Breakaway Headers | <u>41661</u> |
| KK 396 Right-Angle Breakaway Headers | <u>41662</u> |
| KK 396 Vertical Square Pin Breakaway Headers | <u>41671</u> |
| KK 396 Right-Angle Friction Lock Breakaway Headers | <u>41672</u> |

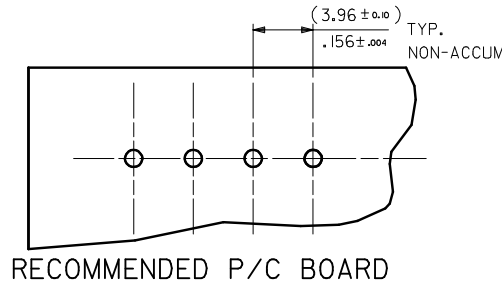
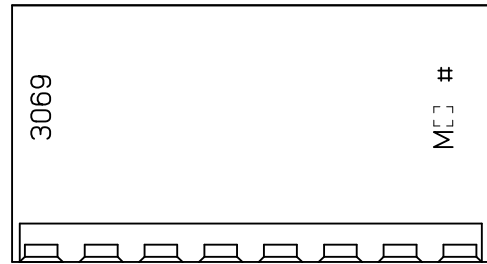
| | |
|---|--------------|
| KK 396 Vertical Headers without Peg | <u>41771</u> |
| KK 396 Right-Angle Headers without Peg | <u>41772</u> |
| KK 396 Vertical Headers with Friction Lock | <u>41791</u> |
| KK 396 Right-Angle Headers with Friction Lock | <u>41792</u> |
| KK 396 Vertical Headers with Friction Lock | <u>42491</u> |

可连接使用部件

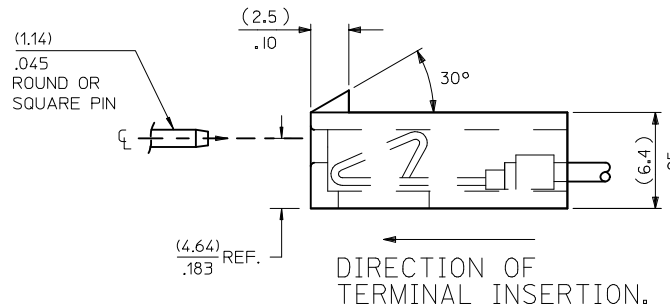
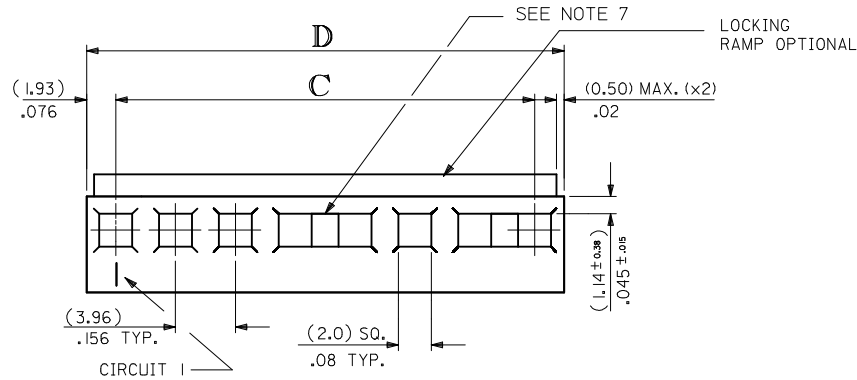
| 描述 | 产品编号 |
|-------------------------------|-------------|
| KK 396 Female Crimp Terminals | <u>2478</u> |
| KK 396 Female Crimp Terminals | <u>2578</u> |



OPTIONAL WINDOW DETAIL

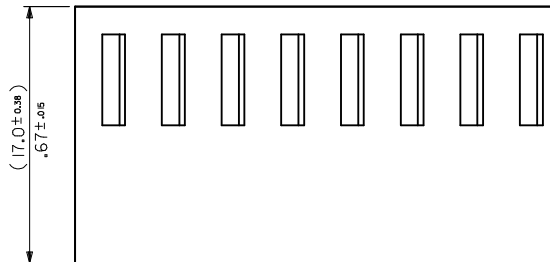


RECOMMENDED P/C BOARD



NOTES:

1. MATERIAL: UL94V-2 NYLON, IEC 60335-1 5TH EDITION GLOW WIRE CAPABLE, COLOR: BLACK
2. FINISH: N/A
3. PRODUCT SPECIFICATION: PS-99020-0087
4. PACKAGING SPECIFICATION: PK-3069-001
5. FOR USE WITH TERMINAL No. 2478 OR 2578
6. ASSEMBLED CONNECTOR MATES WITH (1.14)/0.045 SQUARE OR ROUND PIN.
7. EXTENDED PIN ENTRY WINDOWS ARE POSSIBLE.
8. THIS PART CONFORMS TO CLASS B REQUIREMENTS OF COSMETIC SPECIFICATION PS-45499-002.



| No. OF CCTS. | C | D |
|--------------|----------------------------------|----------------------------------|
| 2 | (3.96 ± 0.10) .156 ± .005 | (7.82 ± 0.25) .308 ± .010 |
| 3 | (7.92 ± 0.15) .312 ± .005 | (11.79 ± 0.25) .464 ± .010 |
| 4 | (11.89 ± 0.15) .468 ± .005 | (15.75 ± 0.25) .620 ± .010 |
| 5 | (15.85 ± 0.15) .624 ± .005 | (19.71 ± 0.25) .776 ± .010 |
| 6 | (19.81 ± 0.15) .780 ± .005 | (23.67 ± 0.25) .932 ± .010 |
| 7 | (23.77 ± 0.15) .936 ± .005 | (27.64 ± 0.31) 1.088 ± .012 |
| 8 | (27.74 ± 0.25) 1.092 ± .010 | (31.60 ± 0.31) 1.244 ± .012 |
| 9 | (31.70 ± 0.25) 1.248 ± .010 | (35.56 ± 0.31) 1.400 ± .012 |
| 10 | (35.66 ± 0.25) 1.404 ± .010 | (39.52 ± 0.31) 1.556 ± .012 |
| 11 | (39.62 ± 0.25) 1.560 ± .010 | (43.48 ± 0.31) 1.712 ± .012 |
| 12 | (43.59 ± 0.25) 1.716 ± .010 | (47.45 ± 0.31) 1.868 ± .012 |
| 13 | (47.55 ± 0.31) 1.872 ± .012 | (51.41 ± 0.36) 2.024 ± .014 |
| 14 | (51.51 ± 0.36) 2.028 ± .014 | (55.37 ± 0.36) 2.180 ± .014 |
| 15 | (55.47 ± 0.36) 2.184 ± .014 | (59.33 ± 0.36) 2.336 ± .014 |
| 16 | (59.44 ± 0.36) 2.340 ± .014 | (63.30 ± 0.36) 2.492 ± .014 |
| 17 | (63.40 ± 0.36) 2.496 ± .014 | (67.26 ± 0.36) 2.648 ± .014 |
| 18 | (67.36 ± 0.36) 2.652 ± .014 | (71.22 ± 0.36) 2.804 ± .014 |
| 19 | (71.32 ± 0.36) 2.808 ± .014 | (75.18 ± 0.36) 2.960 ± .014 |
| 20 | (75.29 ± 0.36) 2.964 ± .014 | (79.15 ± 0.46) 3.116 ± .018 |

| | | | | | | | | | | | |
|---|--------------------------------------|---------------------------------------|--|--|--|---|--------------|---|--|--|--|
| ADD PK SPEC. IEC NO: UCP2014-2821 DRWN:KIPPER 2014/01/08 CHKD:JBELL 2014/01/08 APPR:FSMITH 2014/01/30 | QUALITY SYMBOLS ▽=0 ▽=0 ▽=0 | GENERAL TOLERANCES (UNLESS SPECIFIED) | | DIMENSION STYLE | | SCALE | DESIGN UNITS | THIRD ANGLE PROJECTION | | | |
| | | | | MM/IN | | 4:1 | METRIC | | | | |
| | | | | DRAWN BY DATE | | CHECKED BY DATE | | HOUSING KK CONNECTOR (3.96)/0.156 CRIMP GLOW WIRE VERSION molex | | | |
| | | | | BRIAN RUTTLE 10/12/2007 | | B. MAGUIRE 12/12/2007 | | | | | |
| | | APPROVED BY DATE | | MATERIAL NO. | | DOCUMENT NO. | | SHEET NO. | | | |
| | | B. MAGUIRE 14/12/2007 | | SEE CHART | | SD-3069-GN*** | | 1 OF 2 | | | |
| | | ANGULAR ± 2 ° | | DRAFT WHERE APPLICABLE MUST REMAIN WITHIN DIMENSIONS | | THIS DRAWING CONTAINS INFORMATION THAT IS PROPRIETARY TO MOLEX INCORPORATED AND SHOULD NOT BE USED WITHOUT WRITTEN PERMISSION | | | | | |

| No. OF CCTS. | ENG. No. | PART No. | LOCKING RAMP |
|--------------|-----------|------------|--------------|
| 2 | 3069-G02 | 09-93-0200 | YES |
| | ▲ -G022 | ▲ -94-0200 | NO |
| 3 | -G03 | -93-0300 | YES |
| | -G032 | -94-0300 | NO |
| 4 | -G04 | -93-0400 | YES |
| | -G042 | -94-0400 | NO |
| 5 | -G05 | -93-0500 | YES |
| | -G052 | -94-0500 | NO |
| 6 | -G06 | -93-0600 | YES |
| | -G062 | -94-0600 | NO |
| 7 | -G07 | -93-0700 | YES |
| | -G072 | -94-0700 | NO |
| 8 | -G08 | -93-0800 | YES |
| | -G082 | -94-0800 | NO |
| 9 | -G09 | -93-0900 | YES |
| | -G092 | -94-0900 | NO |
| 10 | -G10 | -93-1000 | YES |
| | -G102 | -94-1000 | NO |
| 11 | -G11 | -93-1100 | YES |
| | -G112 | -94-1100 | NO |
| 12 | -G12 | -93-1200 | YES |
| | -G122 | -94-1200 | NO |
| 13 | -G13 | -93-1300 | YES |
| | -G132 | -94-1300 | NO |
| 14 | -G14 | -93-1400 | YES |
| | -G142 | -94-1400 | NO |
| 15 | -G15 | -93-1500 | YES |
| | -G152 | -94-1500 | NO |
| 16 | -G16 | -93-1600 | YES |
| | -G162 | -94-1600 | NO |
| 17 | -G17 | -93-1700 | YES |
| | -G172 | -94-1700 | NO |
| 18 | -G18 | -93-1800 | YES |
| | -G182 | -94-1800 | NO |
| 19 | -G19 | -93-1900 | YES |
| | -G192 | -94-1900 | NO |
| 20 | ▼ -G20 | ▼ -93-2000 | YES |
| | 3069-G202 | 09-94-2000 | NO |

ENG. No. DESIGNATION

3069 - G N 2

"G" GLOW WIRE CAPABLE
SEE NOTE 1

NO. OF CKT'S

"2" INDICATES HOUSING WITHOUT RAMP
"BLANK" INDICATES HOUSING WITH RAMP

| | | | | | | |
|--|---|---------------------------------------|--|---|--------------|------------------------|
| SEE SHEET 1 EC NO: UCP2014-2821 DRW:MKIPPER 2014/01/08 CHKD:JBELL 2014/01/08 APPR:FSMTH 2014/01/30 | QUALITY SYMBOLS | GENERAL TOLERANCES (UNLESS SPECIFIED) | DIMENSION STYLE | SCALE | DESIGN UNITS | THIRD ANGLE PROJECTION |
| | ▽=0 | mm INCH | MM/IN | 1:1 | METRIC | |
| | ▽=0 | 4 PLACES ± --- ± --- | DRAWN BY DATE | HOUSING KK CONNECTOR (3.96)/0.156 CRIMP GLOW WIRE VERSION molex | | |
| | ▽=0 | 3 PLACES ± --- ± .010 | BRIAN RUTTLE 10/12/2007 | | | |
| | 2 PLACES ± 0.25 ± .014 | CHECKED BY DATE | MATERIAL NO. DOCUMENT NO. SHEET NO. SEE CHART SD-3069-GN*** 2 OF 2 | | | |
| | 1 PLACE ± 0.35 ± --- | B. MAGUIRE 12/12/2007 | | | | |
| | 0 PLACE ± --- ± --- | APPROVED BY DATE | THIS DRAWING CONTAINS INFORMATION THAT IS PROPRIETARY TO MOLEX INCORPORATED AND SHOULD NOT BE USED WITHOUT WRITTEN PERMISSION | | | |
| | | B. MAGUIRE 14/12/2007 | | | | |
| B3 | ANGULAR ± 2 ° DRAFT WHERE APPLICABLE MUST REMAIN WITHIN DIMENSIONS | | SIZE B | | | |